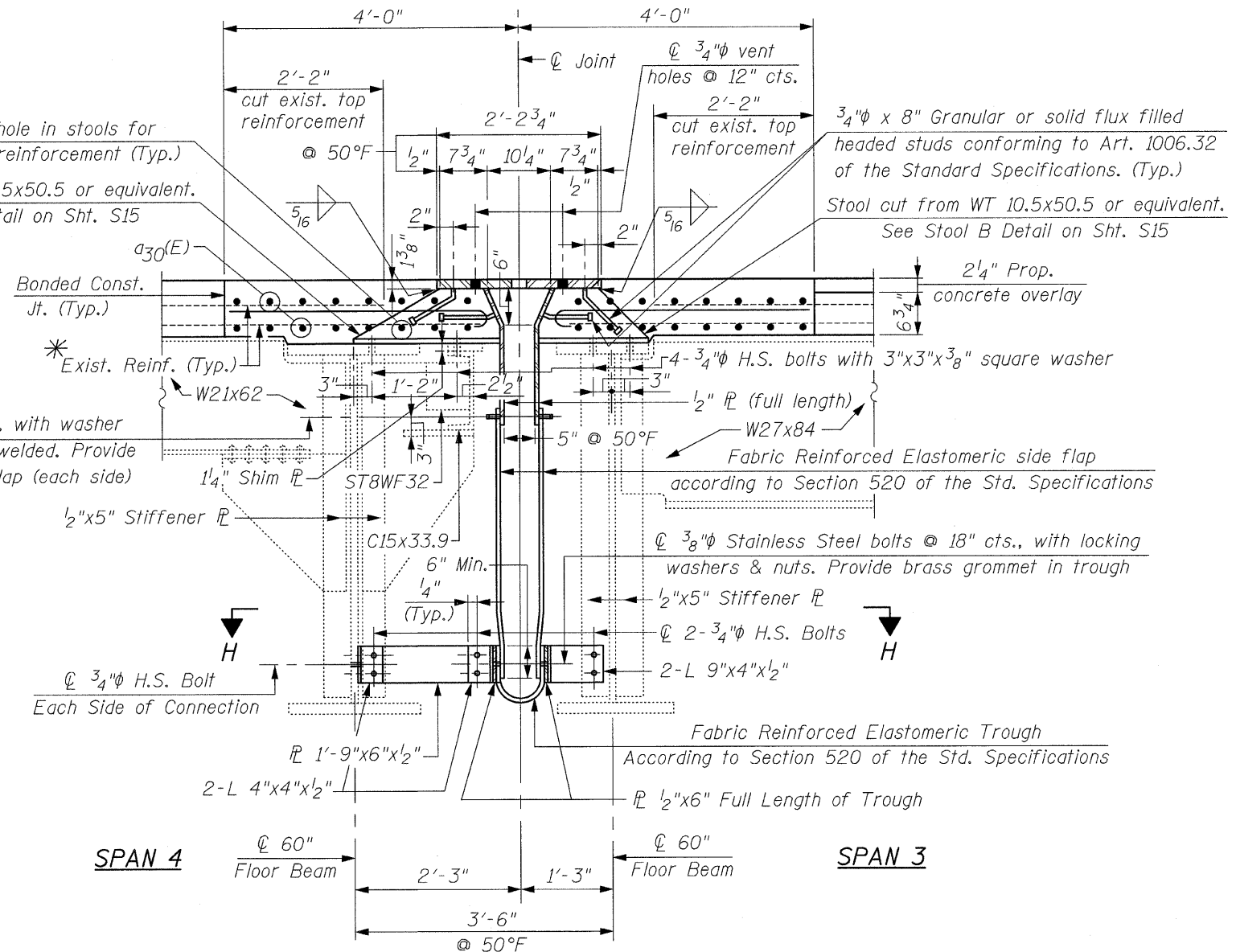


**SECTION F-F**  
(Showing Concrete & Steel Plate removal)

**EXISTING**

Drill 1"φ hole in stools for transverse reinforcement (Typ.)  
Stool cut from WT 10.5x50.5 or equivalent.  
See Stool A Detail on Sht. S15

3/8"φ Studs @ 18" cts., with washer & nut automatically end welded. Provide brass grommet in side flap (each side)

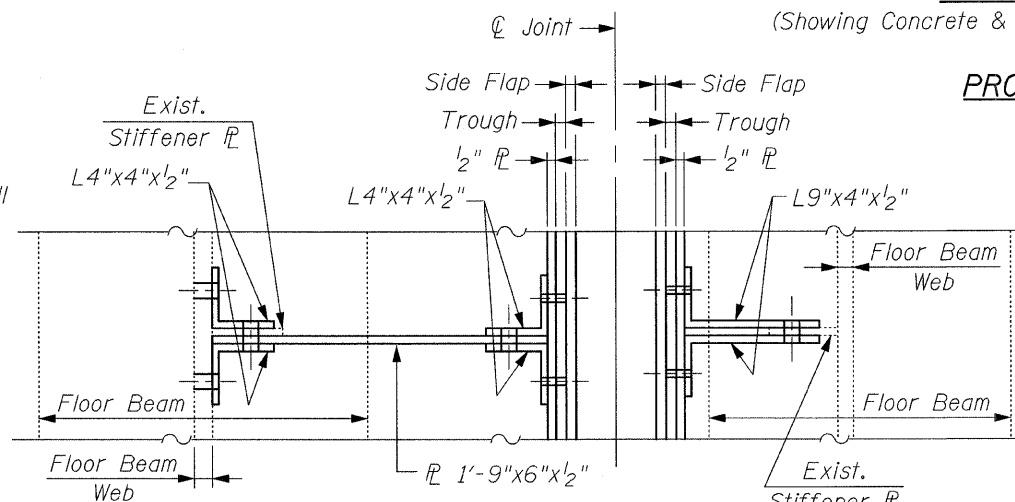


**SECTION F-F**

(Showing Concrete & Steel Plate Replacement)

**PROPOSED**

\* The Existing Reinforcement Bars extending into the removal area shall be cleaned, straightened and incorporated into the new Construction. Any Reinforcement Bars that are damaged during Concrete Removal shall be replaced with an approved Bar Splicer or Anchorage System. Cost included with Concrete Removal.



**SECTION H-H**

**NOTES:**

1. AASHTO M270 Grade 50 Steel shall be used throughout the Finger Plate Joint.
2. Tapered Shims shall be added under the Stools as required by the Engineer to make a smooth Finger Joint. Cost shall be included in the cost of Finger Plate Expansion Joint, 5".
3. Work this Sheet with Sht's. S12, S14 & S15.

FILE NAME = tr-an\_jt recon-type-C-II.dgn  
PLOT DATE = 7/8/2009

**CHRISTIAN-ROGE & ASSOCIATES, INC.**  
ENGINEERS-PLANNERS-SURVEYORS  
211 WEST WACKER DRIVE  
CHICAGO, ILLINOIS 60606  
PHONE: (312)372-2023 FAX: (312)372-5274

DESIGNED - B.N.S./J.C.N.	REVISED -
DRAWN - D.L./R.E.S./F.M.	REVISED -
CHECKED - B.N.S./J.C.N.	REVISED -
DATE - JULY 8, 2009	REVISED -

**STATE OF ILLINOIS**  
**DEPARTMENT OF TRANSPORTATION**

**TRANSVERSE JOINT RECONSTRUCTION, TYPE C - II**  
**KEDZIE AVENUE OVER CAL-SAG CHANNEL S.N. 016-0762**

SCALE: SHEET NO. S13 OF S29 SHEETS STA. TO STA.

F.A.U. RTE.	SECTION	COUNTY	TOTAL SHEETS	SHEET NO.
2831	1313. 1-I-2	COOK	41	22
FED. ROAD DIST. NO. 1   ILLINOIS   FED. AID PROJECT			CONTRACT NO. 60D75	