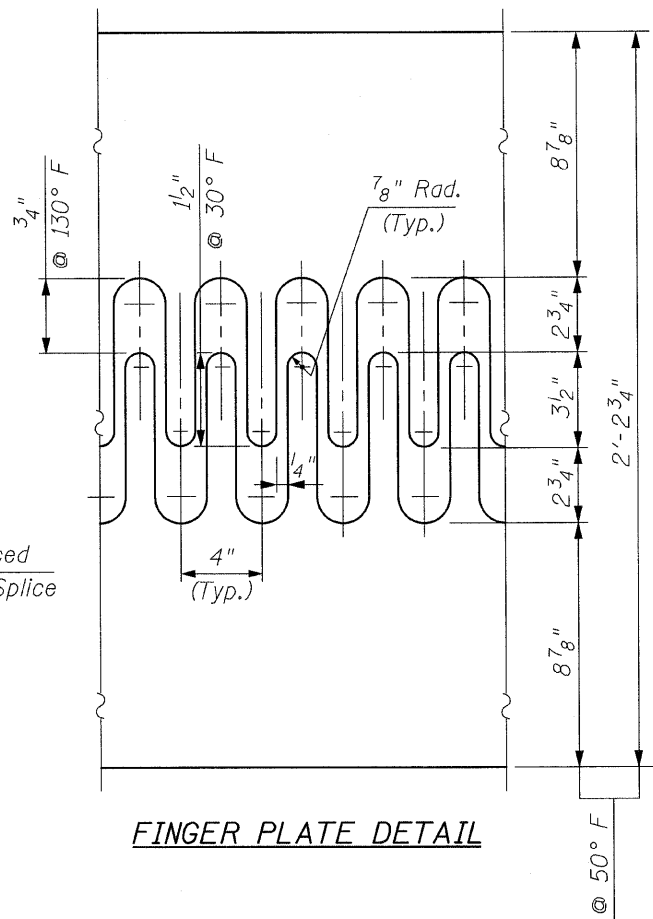
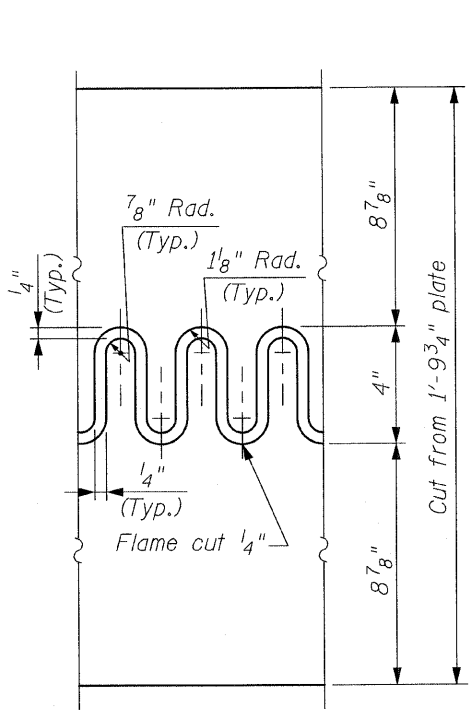


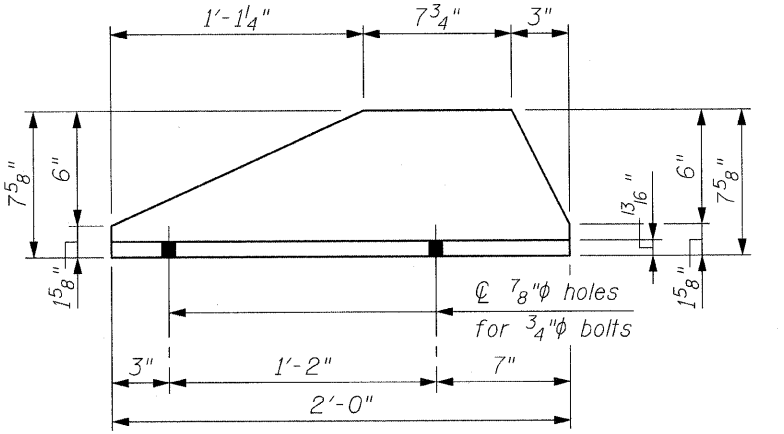
**
3/8" Stainless Steel bolts with washers & nuts. Provide brass grommet in trough
TROUGH SPLICE DETAIL



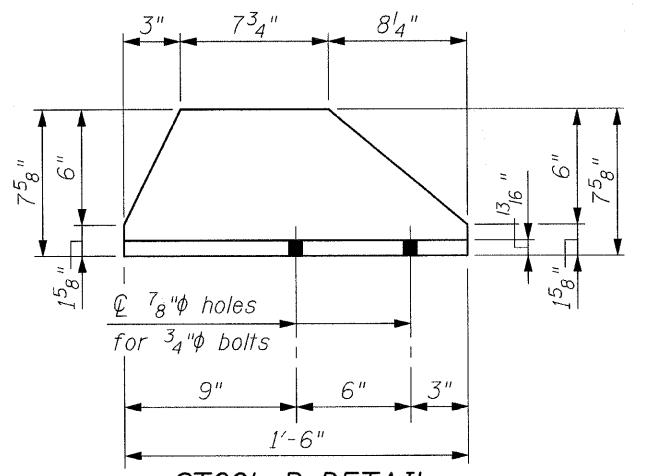
FINGER PLATE DETAIL



FLAME CUTTING DIAGRAM



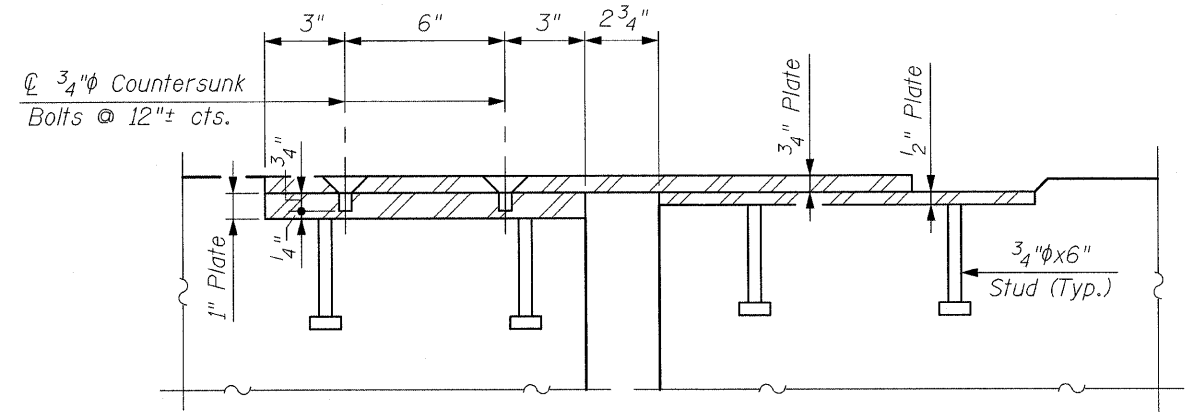
STOOL A DETAIL



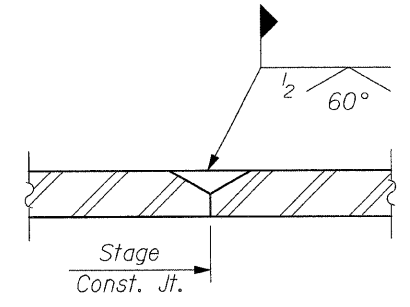
STOOL B DETAIL

NOTES:
For locations of Sections I-I & J-J, See Sht. S14.
Work this sheet with Sht's. S12, S13 & S14.

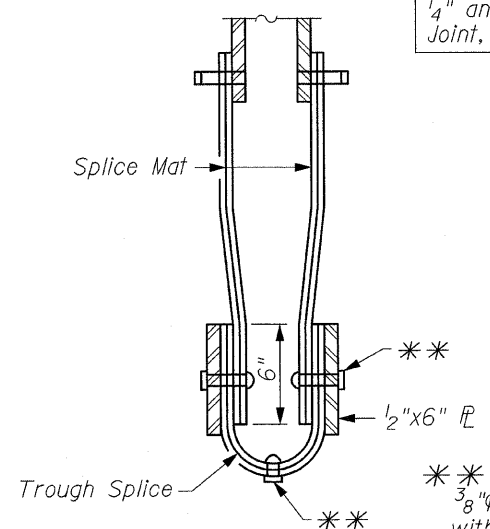
NOTE:
Fabricate all Stools to the minimum height of 7 5/8". At locations where the heights need to be increased, use shim plates. Standard shim pack to include two (2) 1/16" shims, 1/8", 1/4" and 1/2" shims. Cost included with Finger Plate Expansion Joint, 5".



SECTION I-I
(in Sidewalk)



SECTION J-J
(at Stage Const. Joint)



SECTION K-K

FILE NAME = tran_jt recon-type-C-IV.dgn PLOT DATE = 7/8/2009	CHRISTIAN-ROGE & ASSOCIATES, INC. ENGINEERS-PLANNERS-SURVEYORS 211 WEST WACKER DRIVE CHICAGO, ILLINOIS 60606 PHONE: (312)372-2023 FAX: (312)372-5274	DESIGNED - B.N.S./J.C.N. DRAWN - D.L./R.E.S./F.M. CHECKED - B.N.S./J.C.N. DATE - JULY 8, 2009	REVISED - REVISED - REVISED - REVISED -	STATE OF ILLINOIS DEPARTMENT OF TRANSPORTATION	TRANSVERSE JOINT RECONSTRUCTION, TYPE C - IV KEDZIE AVENUE OVER CAL-SAG CHANNEL S.N. 016-0762	F.A.U. RTE. 2831 SECTION 1313. 1-I-2 COUNTY COOK TOTAL SHEETS 41 SHEET NO. 24	CONTRACT NO. 60D75
---	---	--	--	---	--	---	--------------------