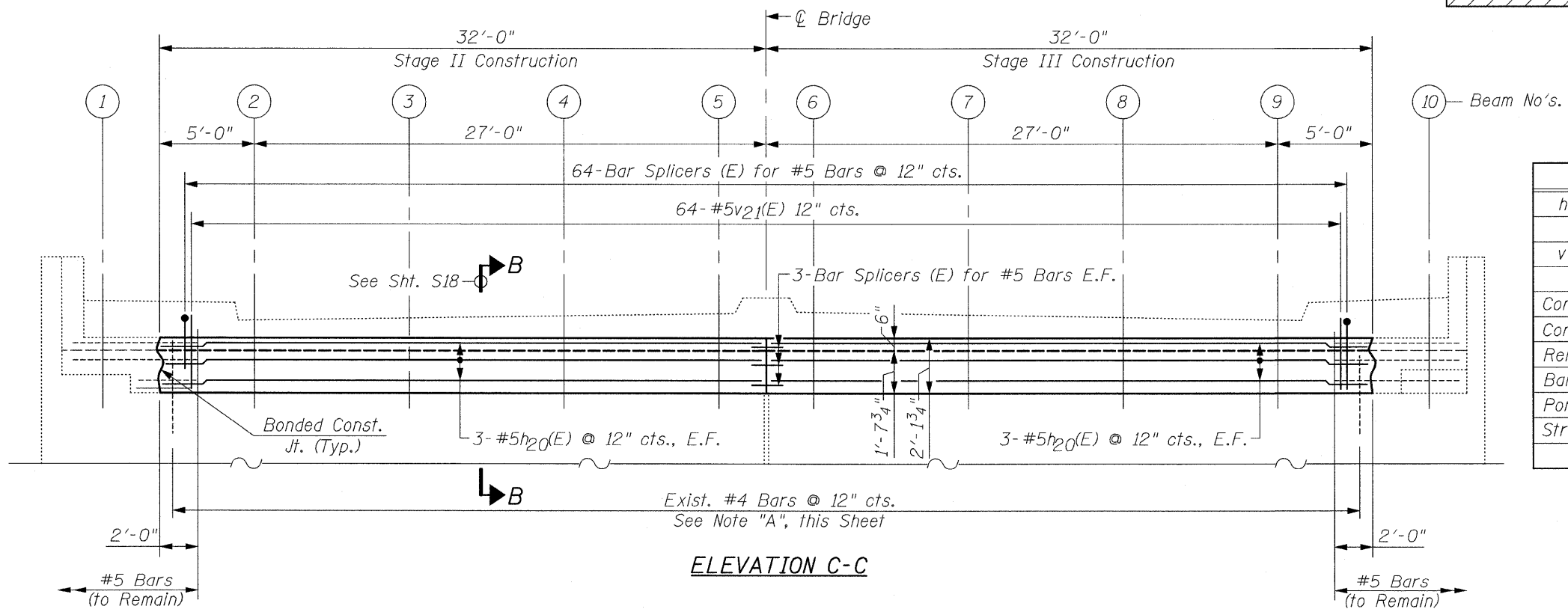


ELEVATION C-C
EXISTING SOUTH ABUTMENT

LEGEND:



ELEVATION C-C
PROPOSED SOUTH ABUTMENT

BILL OF MATERIAL

Bar	No.	Size	Length	Shape
h 20(E)	12	#5	31'-8"	—
v 21(E)	64	#5	2'-8"	—
Concrete Structures			Cu. Yd.	4.5
Concrete Removal			Cu. Yd.	4.5
Reinforcement Bars, Epoxy Coated			Pound	570
Bar Splicers			Each	70
Porous Granular Embankment, Special			Cu. Yd.	17
Structure Excavation			Cu. Yd.	17

NOTES:
Work this Sheet with Sht. S18
See Sht. S27 for Bar Splicer Assembly Details

NOTE "A"
The Existing Reinforcement Bars extending into the removal area shall be cleaned, straightened and incorporated into the new Construction. Any Reinforcement Bars that are damaged during Concrete Removal shall be replaced with an approved Bar Splicer or Anchorage System. Cost included with Concrete Removal.