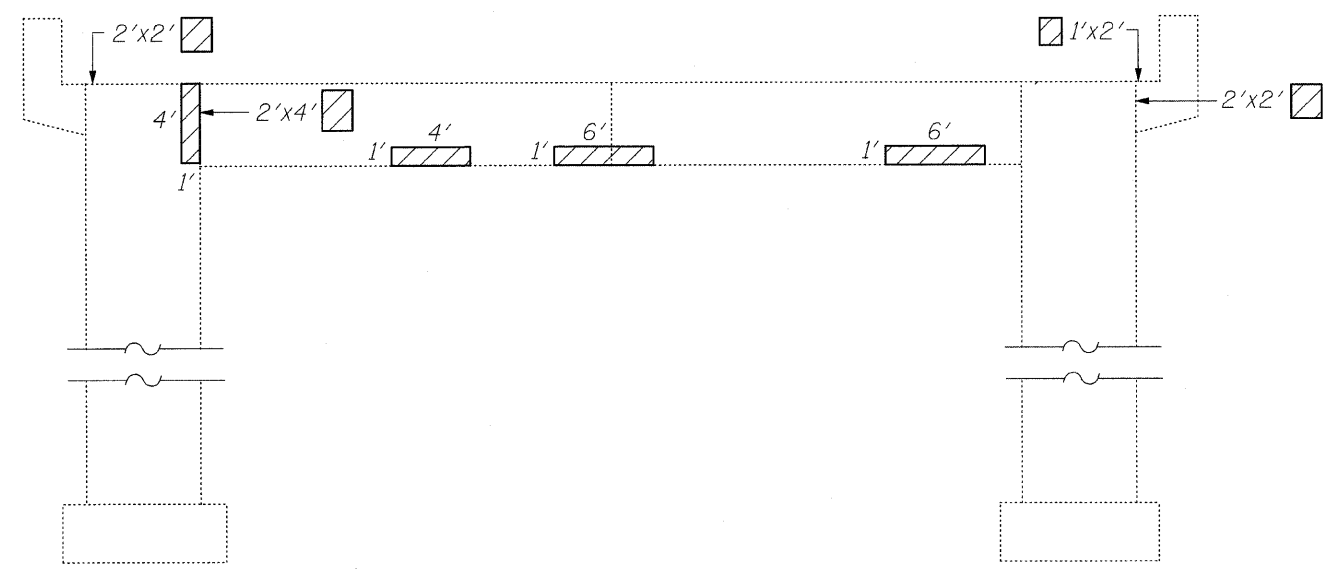


**SOUTH ELEVATION**



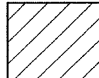
**NORTH ELEVATION**

**NOTE:**  
 The Locations of Structural Repair of Concrete as shown on these Elevations, are from the most recent Survey that was performed in November, 2007

**BILL OF MATERIAL**

ITEM	UNIT	QUANTITY
Structural Repair of Concrete (Depth Equal to or Less Than 5 In.)	Sq. Ft.	91.0

**LEGEND:**

 Structural Repair of Concrete (Depth Equal to or Less Than 5 In.)