

STAGE I

STAGE I NOTES

I. RAMPS

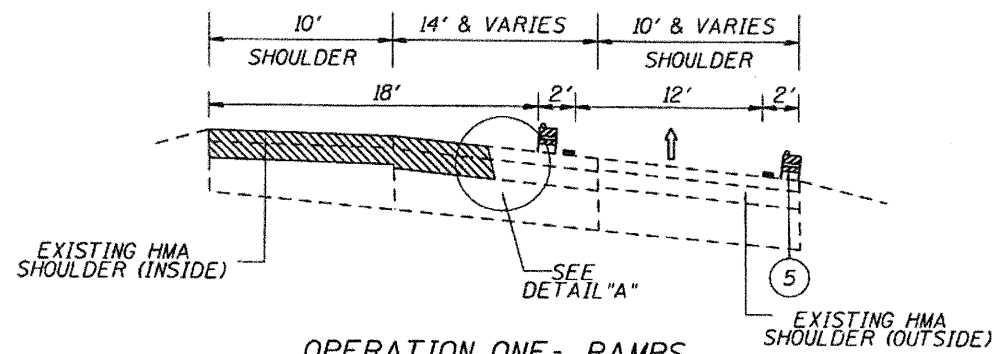
- A. SEQUENCE OF CONSTRUCTION: HMA SURFACE REMOVAL AND PROPOSED HMA COURSES. WORK CAN OCCUR CONCURRENTLY BUT THE AGREED SEQUENCE SHALL BE MAINTAINED AND NOT CONFLICT.
- B. SHOULDER, LANE AND PARTIAL RAMP CLOSURES PER STANDARD 701101, 701400 AND 701401 AND DISTRICT DETAIL TC-17 TRAFFIC CONTROL FOR SHOULDER CLOSURES AND PARTIAL RAMP CLOSURES AS IDENTIFIED IN THE SPECIAL PROVISIONS.

II. MAINLINE

- A. SEQUENCE OF CONSTRUCTION: CLASS D PATCHING, HMA SURFACE REMOVAL AND PROPOSED HMA COURSE. WORK CAN OCCUR CONCURRENTLY WITH THE RAMPS.
- B. CLASS D PATCHING
 - LANE CLOSURES PER STANDARDS 701400, 701401
- C. BARRIER WALL AND GLARE SCREEN REPAIRS. SHOULDER AND LANE CLOSURES PER STANDARDS 701101 AND 701401 FOR TRAFFIC CONTROL DURING ALLOWABLE SHOULDER AND LANE CLOSURES AS IDENTIFIED IN THE SPECIAL PROVISIONS.
- D. SHOULDER AND EMBANKMENT WORK
 - OUTSIDE SHOULDERS. SHOULDER, LANE CLOSURES AND PARTIAL RAMP CLOSURES PER STANDARDS 701101, 701400 AND DISTRICT DETAIL TC-17 FOR TRAFFIC CONTROL DURING ALLOWABLE CLOSURES AS IDENTIFIED IN THE SPECIAL PROVISIONS.
 - MEDIAN. TRAFFIC CONTROL PER MAINTENANCE OF TRAFFIC PLANS. PERMANENT LANE CLOSURES SHOWN IN STAGE I FOR I-80 SHALL NOT EXCEED 30 CALENDER DAYS. TEMPORARY LANE CLOSURES OUTSIDE THE 30 CALENDER DAYS ARE ALLOWED AS STIPULATED IN THE SPECIAL PROVISIONS

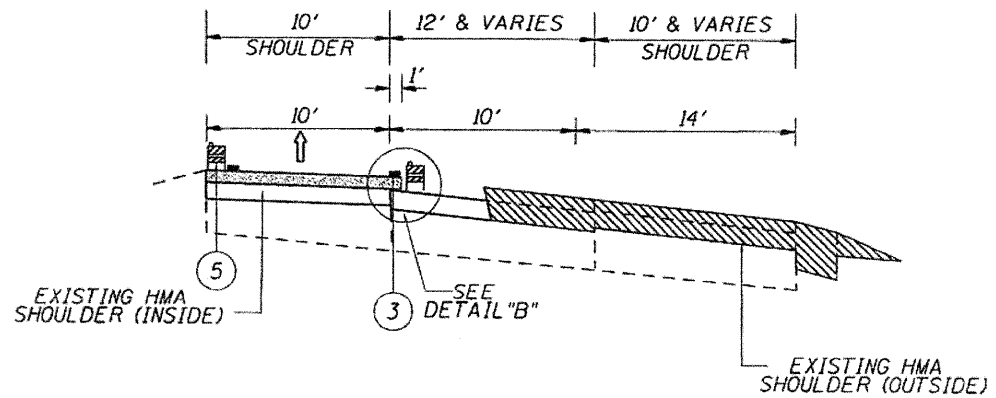
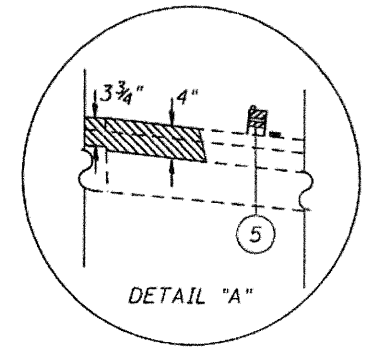
THE CONTRACTOR SHALL ERECT ROAD CONSTRUCTION AHEAD SIGNS (W20-1103(O)48) WITH FLASHING BEACON ON ALL ARTERIAL ROADWAYS APPROACHING INTERCHANGE RAMPS.

- III. REMOVAL OF TEMPORARY PAVEMENT MARKING, WHEN REQUIRED, SHALL BE PAID FOR AS "WORK ZONE PAVEMENT MARKING REMOVAL".
- IV. REMOVAL OF EXISTING PAVEMENT MARKING, WHEN REQUIRED, SHALL BE PAID FOR AS "PAVEMENT MARKING REMOVAL".
- V. EXISTING OR TEMPORARY PAVEMENT MARKINGS REMOVED DURING MILLING OPERATIONS WILL NOT BE PAID SEPARATELY.
- VI. CASTINGS EXPOSED IN TRAVEL LANES SHALL BE PROTECTED PER APPLICABLE PORTIONS OF ARTICLE 603.07 OF THE STANDARD SPECIFICATIONS. THIS WORK WILL NOT BE PAID FOR SEPARATELY, BUT SHALL BE INCLUDED IN THE VARIOUS HMA BINDER AND SURFACE COURSES PLACED.



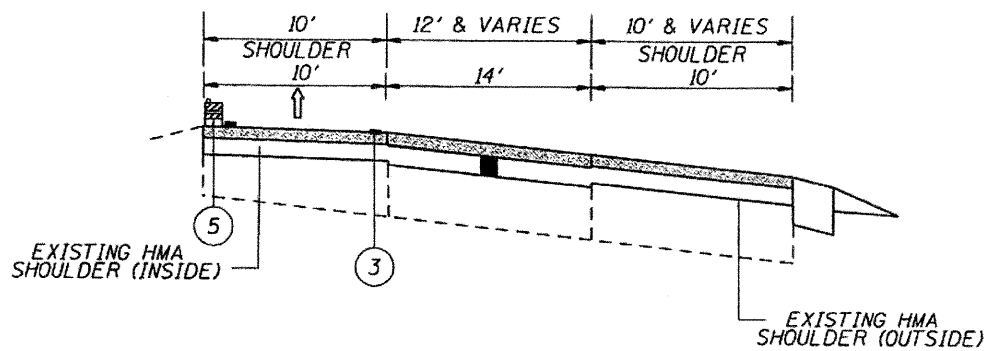
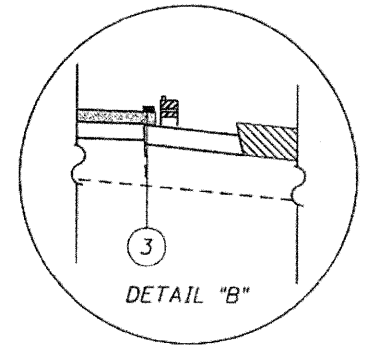
OPERATION ONE - RAMPS

- HMA SURFACE REMOVAL 4" - LANE (MIX "F")
- HMA SURFACE REMOVAL 3 3/4" - INSIDE RAMP SHOULDER (MIX "D")
- PLACE 2 1/4" HMA BINDER CSE (MIX "D")
- PLACE 1 1/2" HMA SURFACE CSE - INSIDE SHOULDER (MIX "D")



OPERATION TWO - RAMPS

- HMA SURFACE REMOVAL 4" - LANE (MIX "F")
- HMA SURFACE REMOVAL 3 3/4" - OUTSIDE RAMP SHOULDER (MIX "D")
- PLACE 2 1/4" HMA BINDER CSE



OPERATION THREE - RAMPS

- PLACE 1 3/4" HMA SURFACE CSE - RAMP LANE (MIX "F")

LEGEND

- ① EXISTING PAVEMENT MARKING
- ② WET REFLECTIVE TEMPORARY TAPE, TYPE III, 5" (10' DASH - 30' SKIP) *
- ③ WET REFLECTIVE TEMPORARY TAPE, TYPE III, 4" * (YELLOW LEFT & WHITE RIGHT) INSTALLED WITHIN 24 HOURS OF MILLING OR BINDER PLACEMENT.
- ④ PROPOSED PAVEMENT MARKING. SEE PAVEMENT MARKING PLANS.
- ⑤ VERTICAL BARRICADES WITH STEADY BURNING MONO DIRECTIONS LIGHT AT 100' C-C SPACING.

* - USE EPOXY PAVEMENT MARKING ON MILLED SURFACE