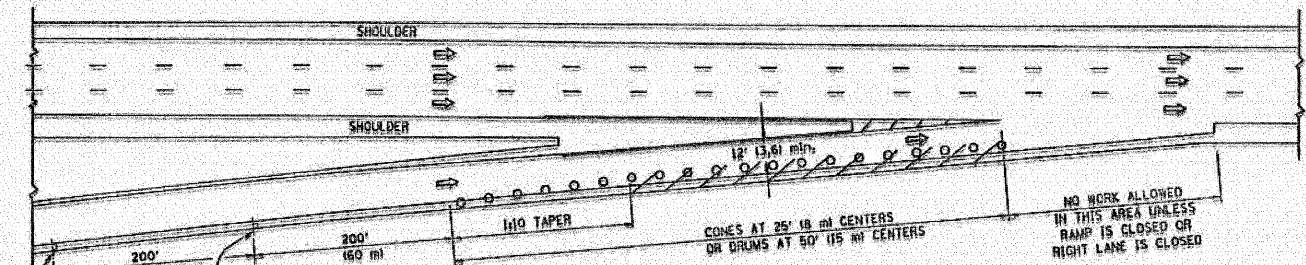
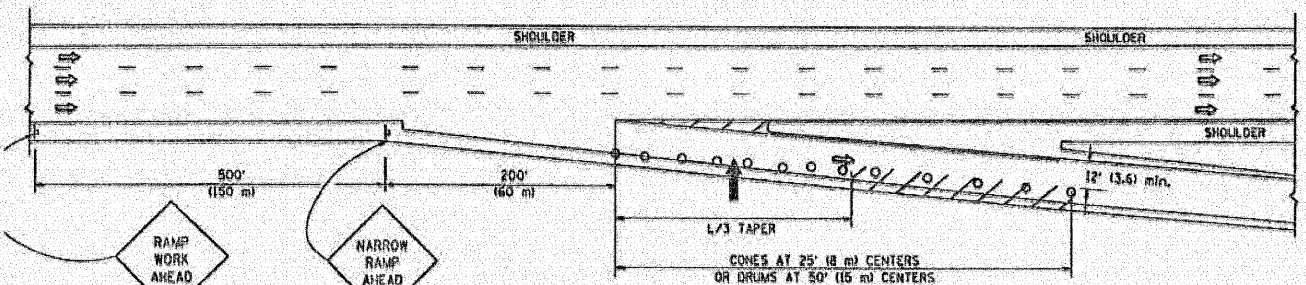


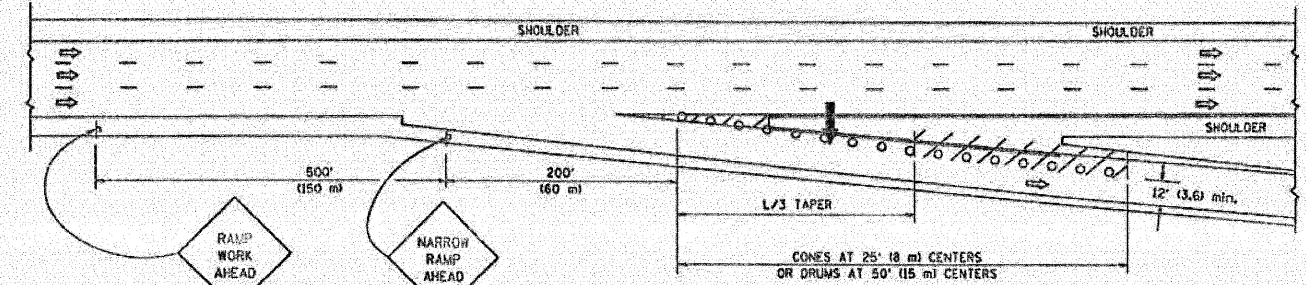
**PARTIAL RAMP CLOSURE DETAILS**



TYPICAL ENTRANCE RAMP



TYPICAL EXIT RAMP



TYPICAL EXIT RAMP

**SYMBOLS**

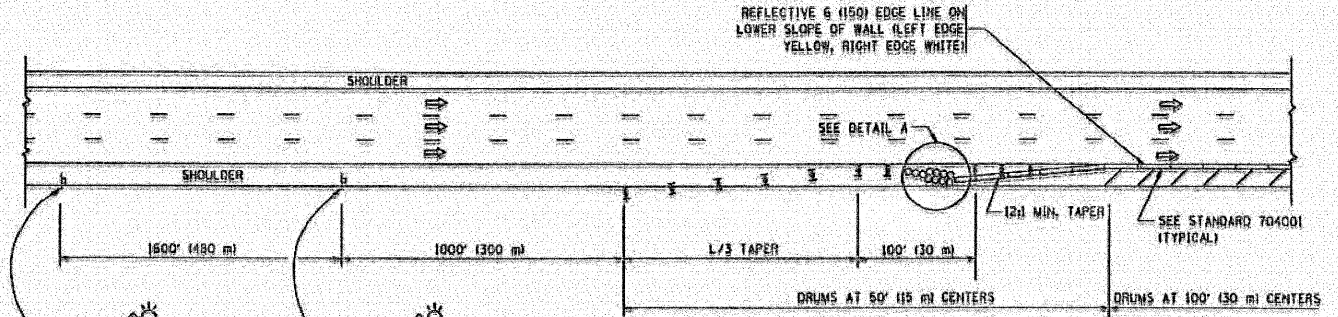
- ➡ ARROWBOARD
- ▨ WORK AREA
- ⊥ SIGN ON PORTABLE OR PERMANENT SUPPORT
- Ⓢ FLAGGER WITH CONTROL SIGN
- Ⓜ TYPE II BARRICADE, DRUM OR VERTICAL BARRICADE WITH STEADY BURN MONO-DIRECTIONAL LIGHT
- CONE, DRUM OR BARRICADE

**GENERAL NOTES**

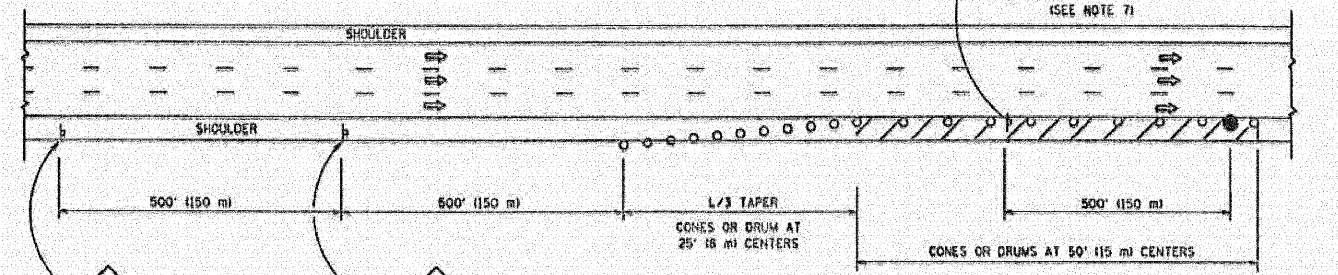
1. THE "L" DISTANCE EQUALS:
 

SPEED LIMIT	FORMULAS
45 mph (72 km/h) OR GREATER	METRIC ENGLISH $L = 0.65(W/S)$ $L = (W/S)$
W = WIDTH OF OFFSET IN FEET (METERS)	S = NORMAL POSTED SPEED MPH (KM/H)
2. PLASTIC DRUMS WITH HIGH PERFORMANCE REFLECTIVE SHEETING AND STEADY BURNING LIGHTS ARE REQUIRED FOR ALL NIGHTTIME CLOSURES.
3. ALL SIGNS SHALL BE POST MOUNTED IF THE CLOSURE TIME EXCEEDS FOUR DAYS.
4. FLASHING LIGHTS SHALL BE USED DURING THE HOURS OF DARKNESS AND SHALL BE INSTALLED ABOVE THE FIRST TWO SETS OF SIGNS.

**SHOULDER CLOSURE DETAILS**



PERMANENT SHOULDER CLOSURE



DAYTIME SHOULDER CLOSURE

ARRAY DESIGN PER MANUFACTURER TO BE NCHRP 350 COMPLIANT FOR POSTED SPEED.

DETAIL "A" IMPACT ATTENUATOR, TEMPORARY (SEE NOTE 5)

REVISIONS	
NAME	DATE
DWS	11/96
JAF	12/02
NCHRP 350	04/03
JAF	2/06
SPB	1/07

**TRAFFIC CONTROL DETAILS FOR FREEWAY SHOULDER CLOSURES PARTIAL RAMP CLOSURES**

**LONGO INC.**  
CONSULTING ENGINEERS  
1550 WALL ST., SUITE 222  
HAVERVILLE, ILLINOIS 60563 PH: 618.302.577-5100

DESIGNED - MJY	REVISED -
DRAWN - ST	REVISED -
CHECKED - MJY	REVISED -
DATE - 07/08/2009	REVISED -

STATE OF ILLINOIS  
DEPARTMENT OF TRANSPORTATION

DISTRICT ONE DETAIL SHEETS  
I-80 (EAST OF 80th TO I-294)

SCALE: NONE SHEET NO. 11 OF 14 SHEETS STA. 10+00 TO STA. 405+00

F.A.I. RTE.	SECTION	COUNTY	TOTAL SHEETS	SHEET NO.
349	195-5-1, ETC. 1819-824) RS-1	WILL & COOK	80	58
D-91-145-09			CONTRACT NO. 60F61	
FED. ROAD DIST. NO.		ILLINOIS FED. AID PROJ. ECT		