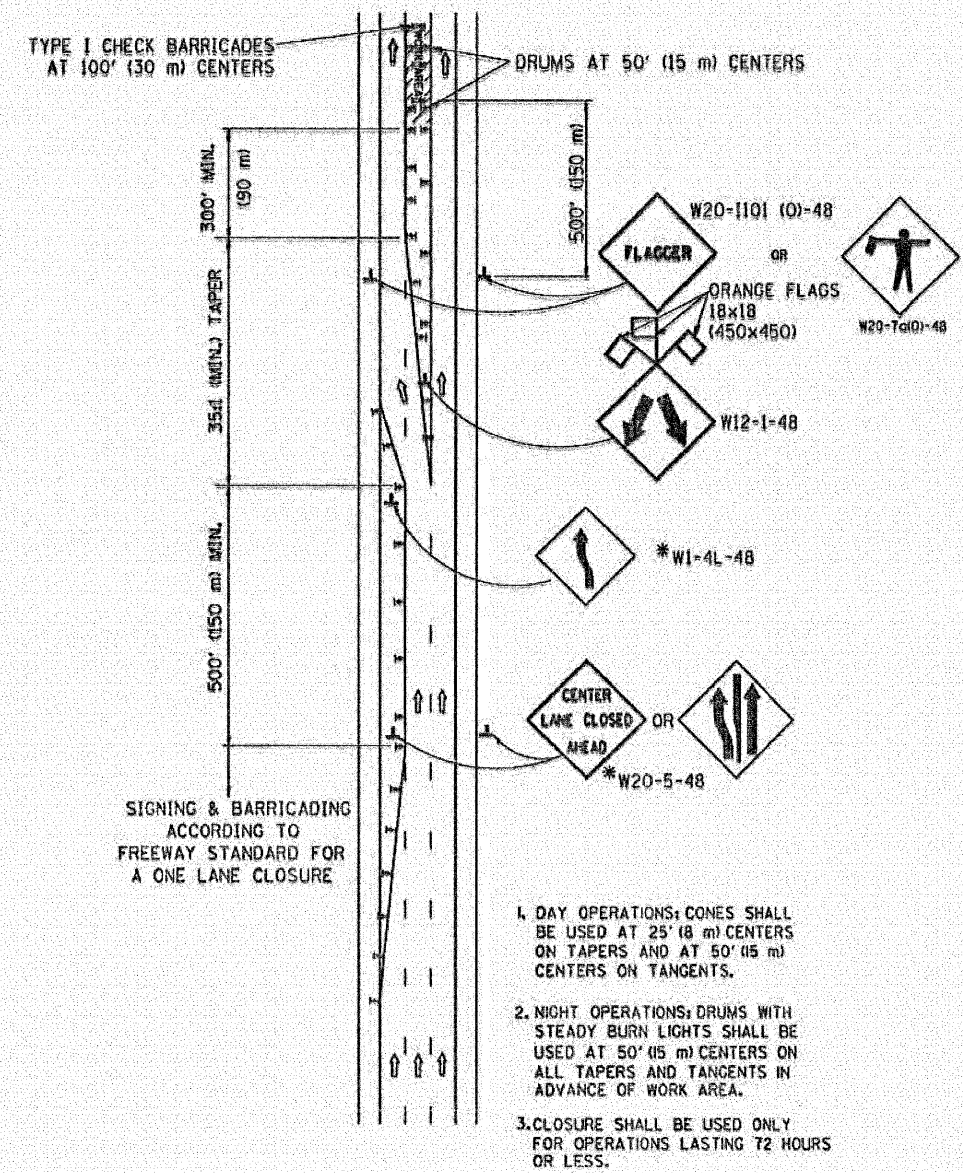
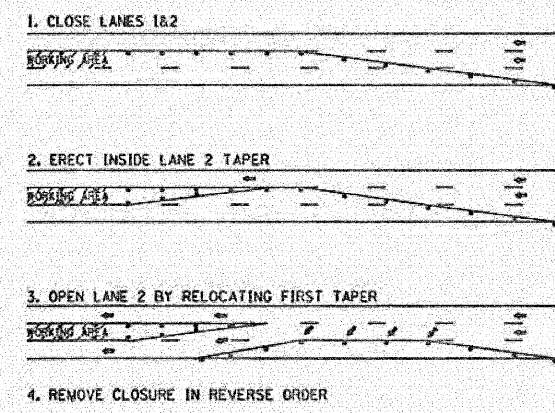


CENTER LANE CLOSURE

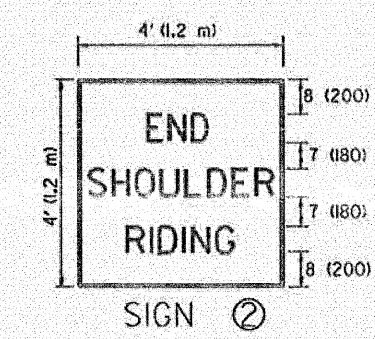
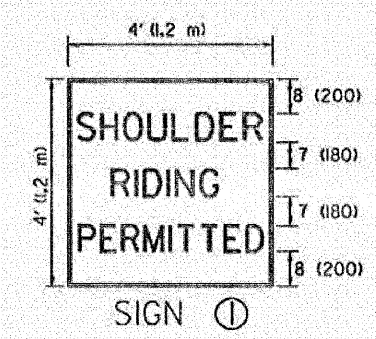
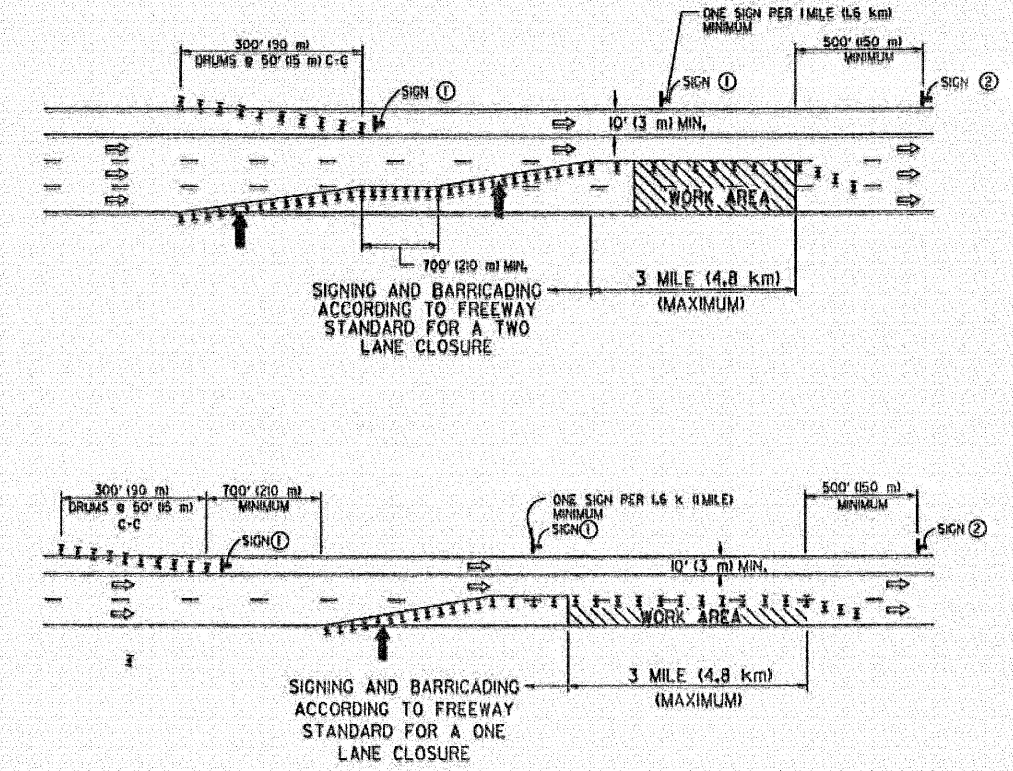


INSTALLATION SEQUENCE



SHOULDER LANE

NOTE: CLOSURE SHALL BE USED ONLY FOR OPERATIONS LASTING 72 HOURS OR LESS.



6 (150) SERIES "C" LEGEND  
BLACK LEGEND  
WHITE REFLECT. BACKGROUND  
1(25) BORDER

SYMBOLS

- ↑ DIRECTION OF TRAFFIC
- ➡ ARROWBOARD
- ▨ WORK AREA
- ◇ SIGN WITH 18x18 (450x450) ORANGE FLAGS ATTACHED \*
- ▬ SIGN ON PORTABLE OR PERMANENT SUPPORT \*
- ▬ TYPE I BARRICADE, DRUM OR VERTICAL BARRICADE WITH MONO-DIRECTIONAL STEADY BURN LIGHT

ALL DIMENSIONS ARE IN INCHES (MILLIMETERS) UNLESS OTHERWISE SHOWN

\* ALL SIGNS SHALL BE MOUNTED AT A MINIMUM HEIGHT OF 5' (1.5 m).

REVISIONS	
NAME	DATE
PRIOR DETAILS ON TC-9 - JAF	4/03
SPB	1/07

TRAFFIC CONTROL DETAILS FOR FREEWAY CENTER LANE CLOSURE SHOULDER LANE