

F.A.U. RTE.	SECTION	COUNTY	TOTAL SHEETS	SHEET NO.
1320	581 B-1	COOK	33	1
FED. ROAD DIST. NO.	ILLINOIS	CONTRACT NO. 60F91		

D-91-288-09

IMPROVEMENT LOCATED IN THE VILLAGE OF HOFFMAN ESTATES

STATE OF ILLINOIS  
DEPARTMENT OF TRANSPORTATION  
DIVISION OF HIGHWAYS

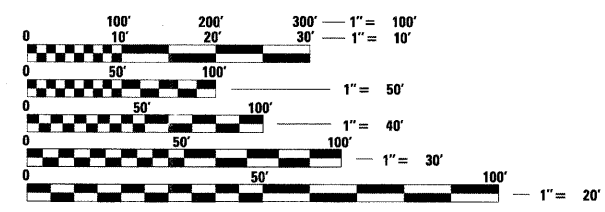
PLANS FOR PROPOSED  
FEDERAL AID HIGHWAY

F.A.U. ROUTE 1320 (IL ROUTE 58 /GOLF ROAD)  
OVER POPLAR CREEK  
SECTION: 581 B-1  
PPC DECK BEAM REPLACEMENT  
COOK COUNTY  
C-91-288-09



FOR INDEX OF SHEETS, SEE SHEET NO. 2

DESIGN DESIGNATION  
MINOR ARTERIAL (URBAN)  
ADT 13,600 (2008)  
SPEED LIMIT 55 MPH



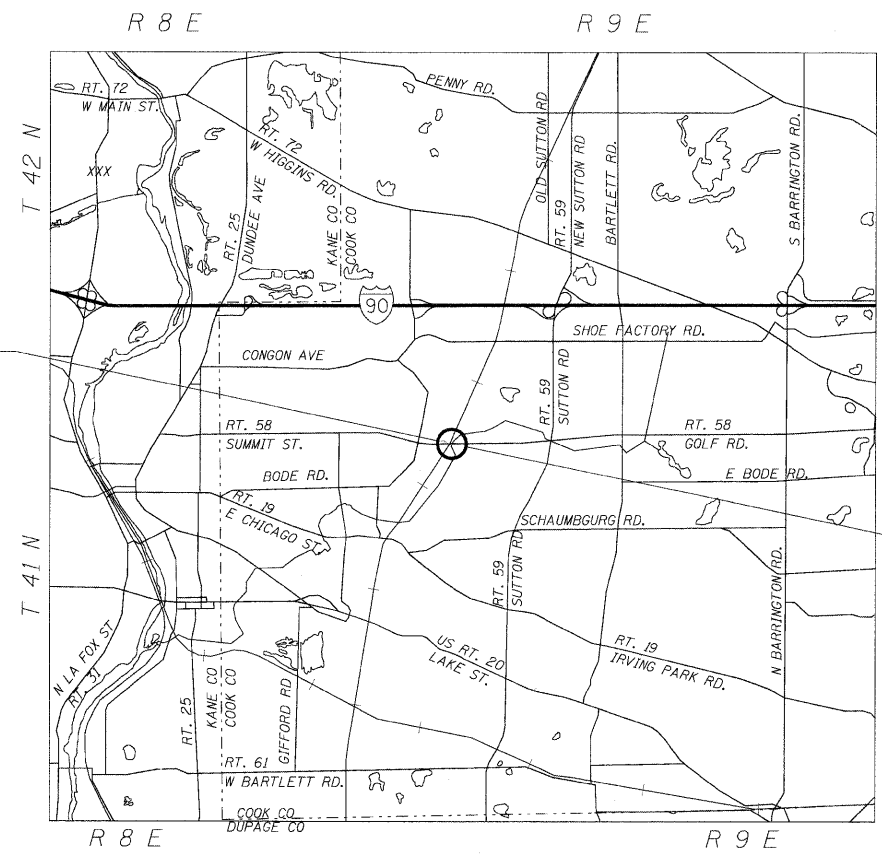
FULL SIZE PLANS HAVE BEEN PREPARED USING STANDARD ENGINEERING SCALES. REDUCED SIZED PLANS WILL NOT CONFORM TO STANDARD SCALES. IN MAKING MEASUREMENTS ON REDUCED PLANS, THE ABOVE SCALES MAY BE USED.

J.U.L.I.E.  
JOINT UTILITY LOCATION INFORMATION FOR EXCAVATION  
1-800-892-0123  
OR 811

PROJECT MANAGER: KIM HARVEY (847) 705-4055  
PROJECT ENGINEER: ERSKINE W. KLYCE (847) 705-4594

CONTRACT NO. 60F91

PROJECT BEGINS  
STA. 492+55



PROJECT ENDS  
STA. 498+45

LOCATION SKETCH  
NET AND GROSS LENGTH OF PROJECT = 590' = 0.112 MI

STATE OF ILLINOIS  
DEPARTMENT OF TRANSPORTATION  
DIVISION OF HIGHWAYS

SUBMITTED June 24 20 09  
De O'Leary  
DEPUTY DIRECTOR OF HIGHWAYS, REGION ENGINEER

August 14, 20 09  
Charles J. Ingersoll  
ENGINEER OF DESIGN AND ENVIRONMENT

August 14, 20 09  
Christine M. Reed  
DIRECTOR OF HIGHWAYS, CHIEF ENGINEER

PRINTED BY THE AUTHORITY  
OF THE STATE OF ILLINOIS

LOCO, INC.  
CONSULTING ENGINEERS  
1560 WALL ST., SUITE 222  
NAPERVILLE, ILLINOIS 60563 PH 630/577-9100

STATE OF ILLINOIS  
REGISTERED PROFESSIONAL ENGINEER  
WILLIAM H. EMB  
081-005150

Expires 11-30-10 11/30/09