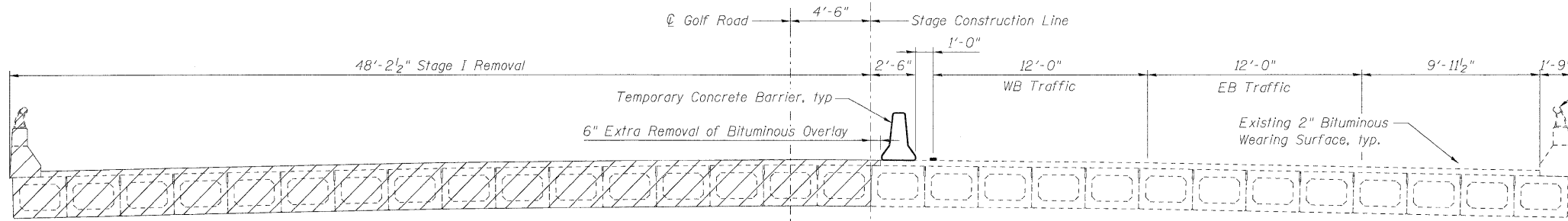
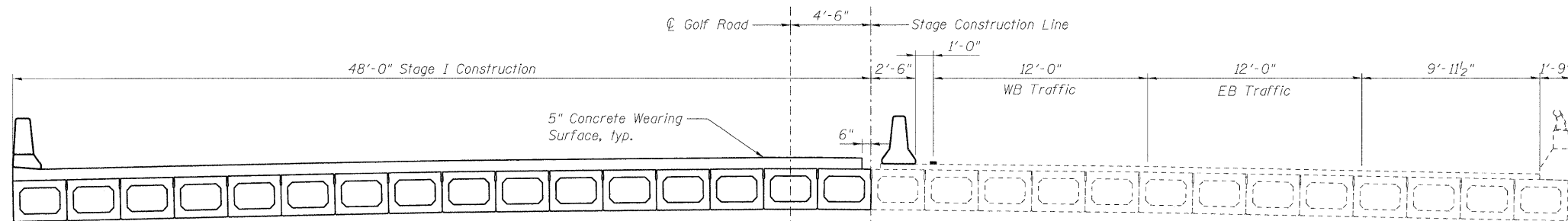


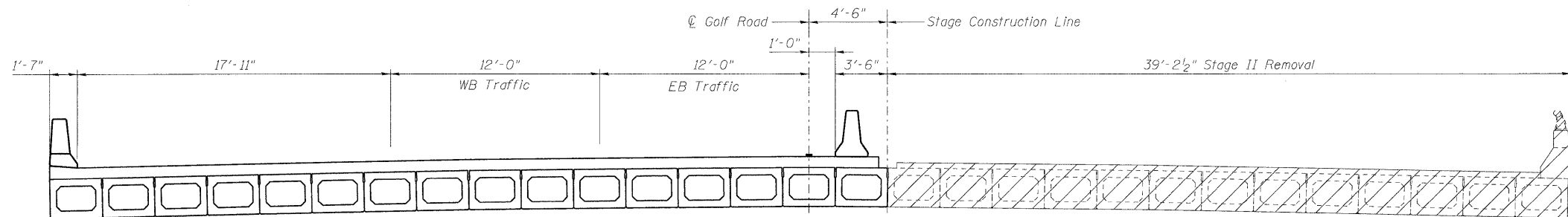
STATE OF ILLINOIS  
DEPARTMENT OF TRANSPORTATION



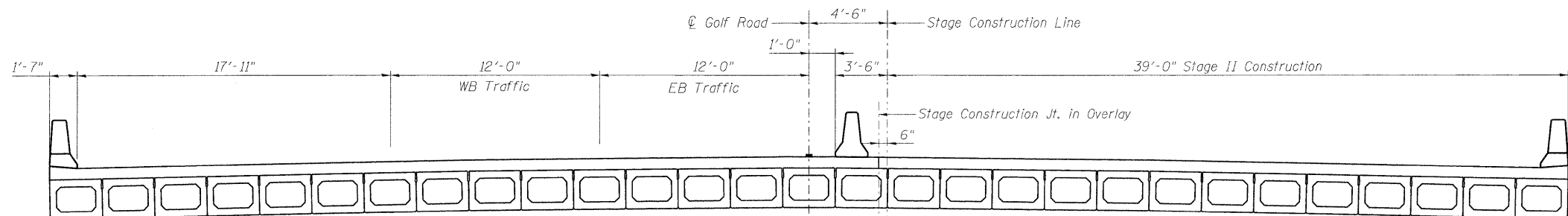
**STAGE I REMOVAL**



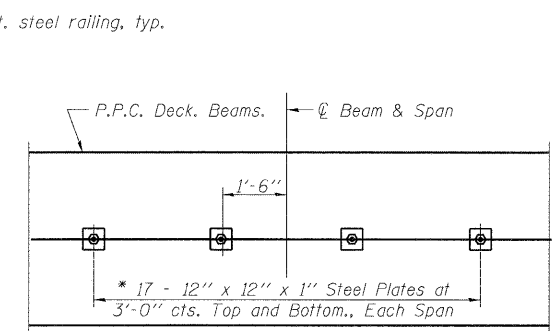
**STAGE I CONSTRUCTION**



**STAGE II REMOVAL**

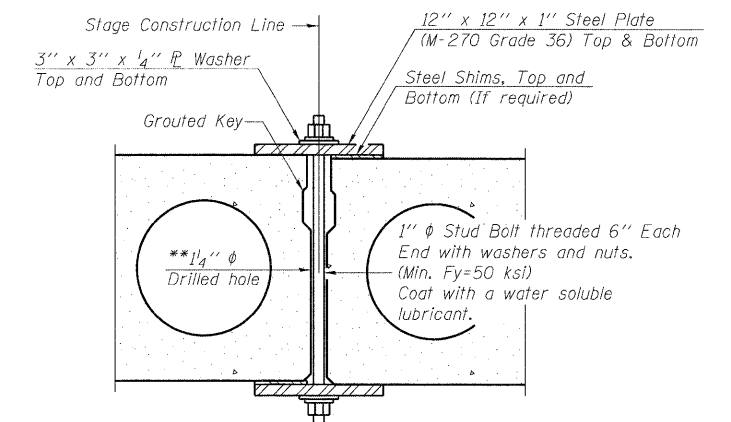


**STAGE II CONSTRUCTION**

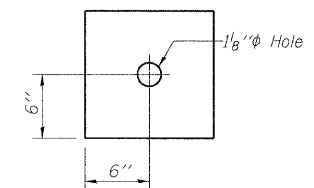


**PLAN**

\*Space plates to miss Temporary Bridge Rail Posts.



**SECTION**



**CLAMPING PLATE**

**SHEAR KEY CLAMPING DETAILS AT STAGE CONST. JT.**

Cost included with Precast Prestressed Concrete Deck Beams.  
See Stage Construction Details for traffic lanes.

\*\* As an alternate to the drilled holes, the Contractor may request the Fabricator to cast 2" diameter semi-circular recesses in the sides of each beam adjacent to the stage construction line. These recesses should align to form a hole at the appropriate locations for the clamping device bolts. If the Contractor elects to use this alternate, the details shall be identified on the shop drawings.

DESIGNED -	SLV
CHECKED -	MJM
DRAWN -	SLV
CHECKED -	MJM

**LONCO, INC.**  
CONSULTING ENGINEERS  
1560 WALL ST., SUITE 222  
NAPERVILLE, ILLINOIS 60563 PH: (630) 577-9100

**NOTES**

All Cross Sections looking East.  
Hatched area indicates Removal of Existing Superstructures.  
Cost of removing existing bituminous wearing surface, parapet, and railing are included with Removal of Existing Superstructures.  
For quantity of Temporary Concrete Barrier see Roadway Plans.  
For Temporary Concrete Barrier details see Sheet S4 of S15.

**STAGE CONSTRUCTION DETAILS  
STRUCTURE NO. 016-2514**

SHEET NO. S3 OF S15 SHEETS	F.A.U. RTE. 1320	SECTION 581 B-1	COUNTY COOK	TOTAL SHEETS 33	SHEET NO. 14
	D-91-288-09		CONTRACT NO. 60F91		
FED. ROAD DIST. NO. ILLINOIS FED. AID PROJECT					