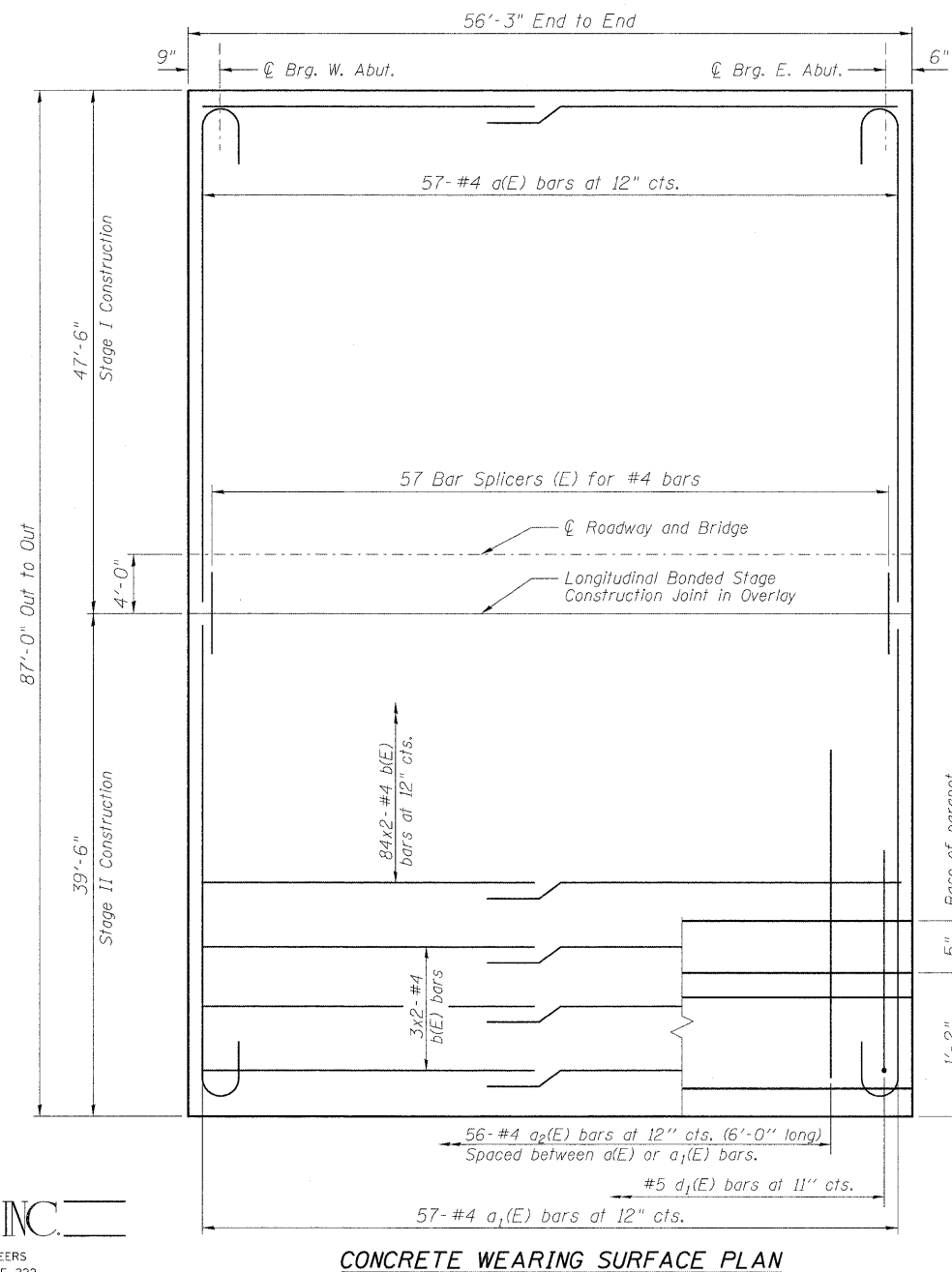
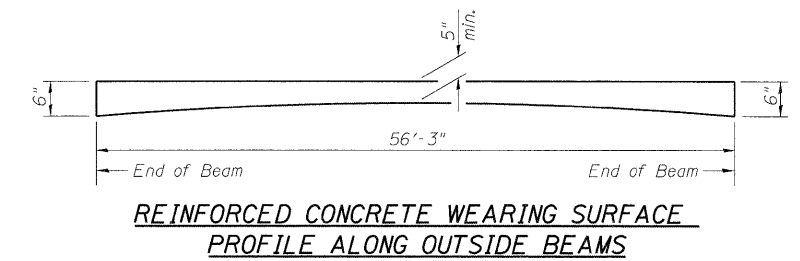
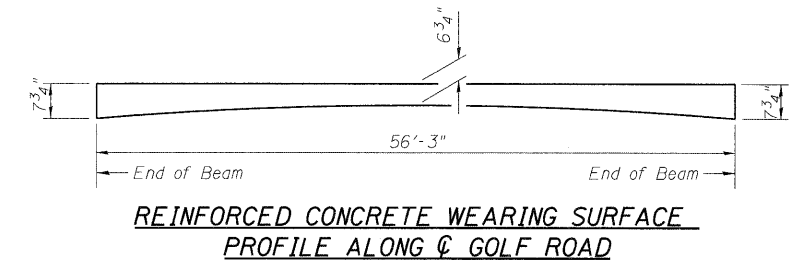
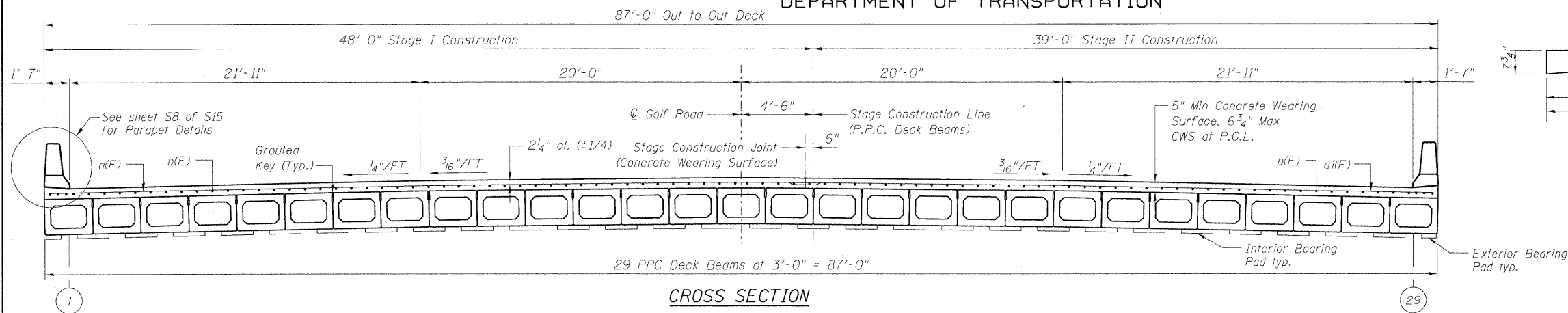


STATE OF ILLINOIS  
DEPARTMENT OF TRANSPORTATION



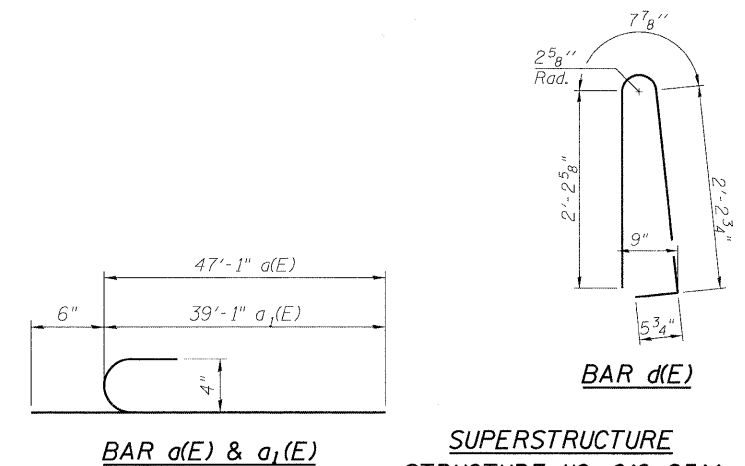
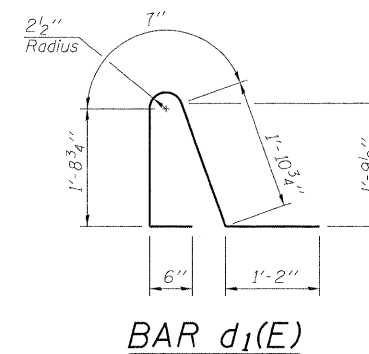
**NOTES**

For remainder of Superstructure Details see Sheet S8 of S15.

Bars indicated thus 84x2-#4, etc. indicates 84 lines of bars with 2 lengths per line.

**BILL OF MATERIAL**

Bar	No.	Size	Length	Shape
a(E)	57	#4	47'-7"	C
a1(E)	57	#4	39'-7"	C
a2(E)	112	#4	6'-0"	—
b(E)	180	#4	28'-9"	—
d(E)	61	#5	5'-7"	U
d1(E)	61	#5	5'-11"	U
e(E)	42	#4	18'-6"	—
e1(E)	4	#8	30'-2"	—
e2(E)	4	#4	28'-10"	—
Concrete Wearing Surface 5"	Sq. Yd.	544		
Bar Splicers	Each	57		
Concrete Superstructure	Cu. Yd.	13		
Reinforcement Bars, Epoxy Coated	Pound	8880		



DESIGNED	SLV
CHECKED	MJM
DRAWN	SLV
CHECKED	MJM

**LONCO, INC.**  
CONSULTING ENGINEERS  
1560 WALL ST. SUITE 222  
NAPERVILLE, ILLINOIS 60563 PH: (630) 577-9100

**SUPERSTRUCTURE  
STRUCTURE NO. 016-2514**

SHEET NO. S7	F.A.U. RTE.	SECTION	COUNTY	TOTAL SHEETS	SHEET NO.
OF S15 SHEETS	1320	581 B-1	COOK	33	18
D-91-288-09			CONTRACT NO. 60F91		
FED. ROAD DIST. NO. _			ILLINOIS FED. AID PROJECT		