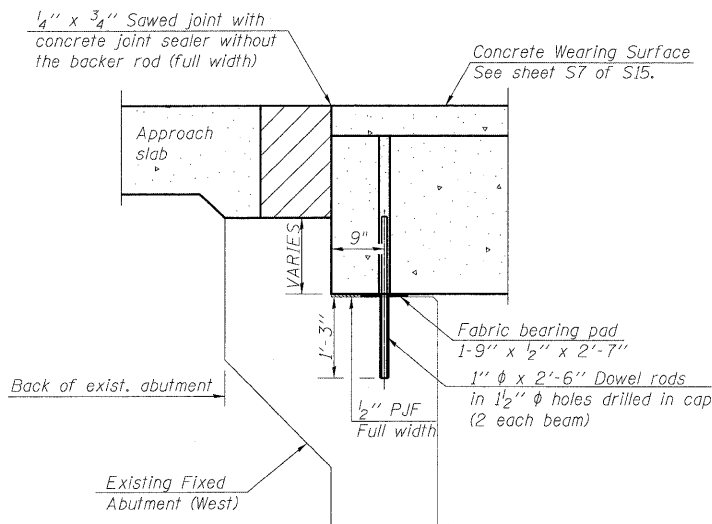


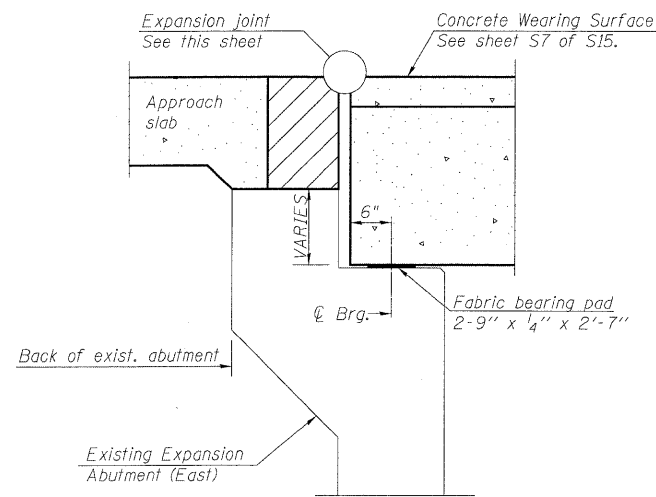
STATE OF ILLINOIS
DEPARTMENT OF TRANSPORTATION



SECTION THRU FIXED ABUTMENT

Notes:

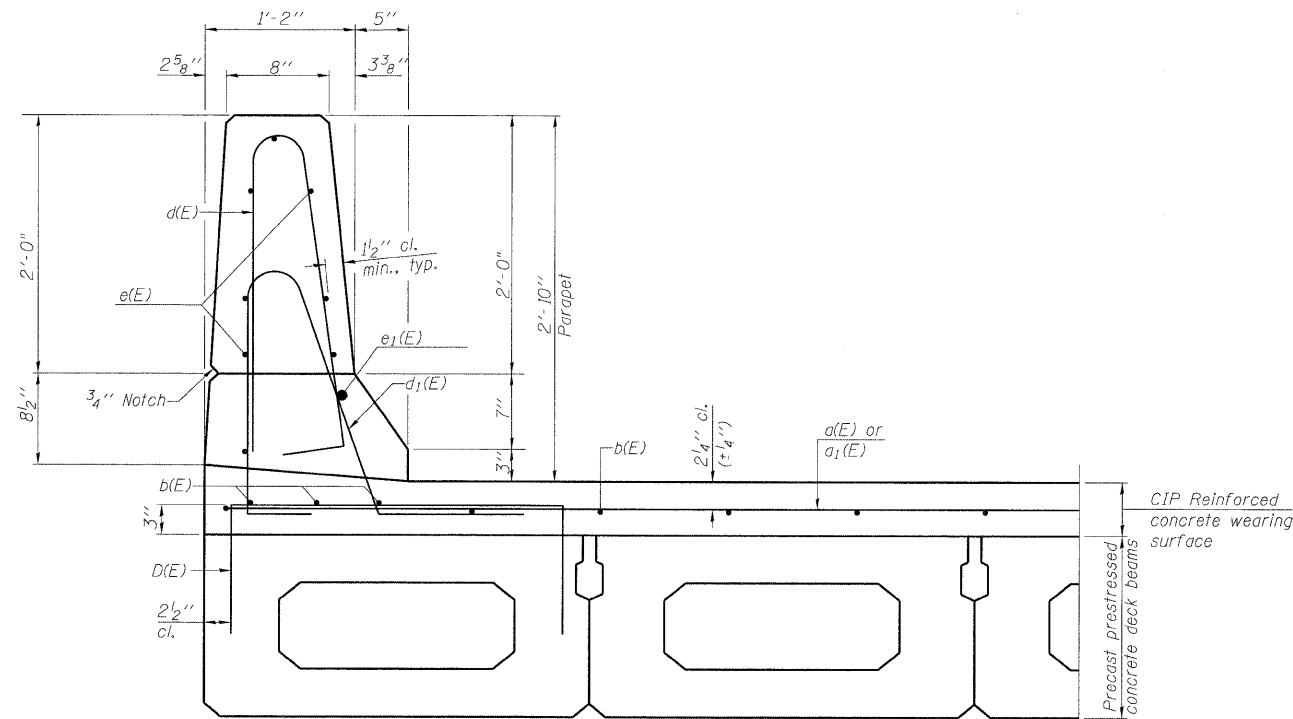
After beams have been erected, holes shall be drilled into substructure and anchor dowels placed. Dowel holes shall be filled with non-shrink grout to top of beam and allowed to cure min. 24 hrs. prior to grouting the shear keys. All horizontal dimensions are at right angles to beam ends. Hatched area to be poured after concrete wearing surface is in place. See sheet S12 of S15 for bearing pad details.



SECTION THRU EXPANSION ABUTMENT

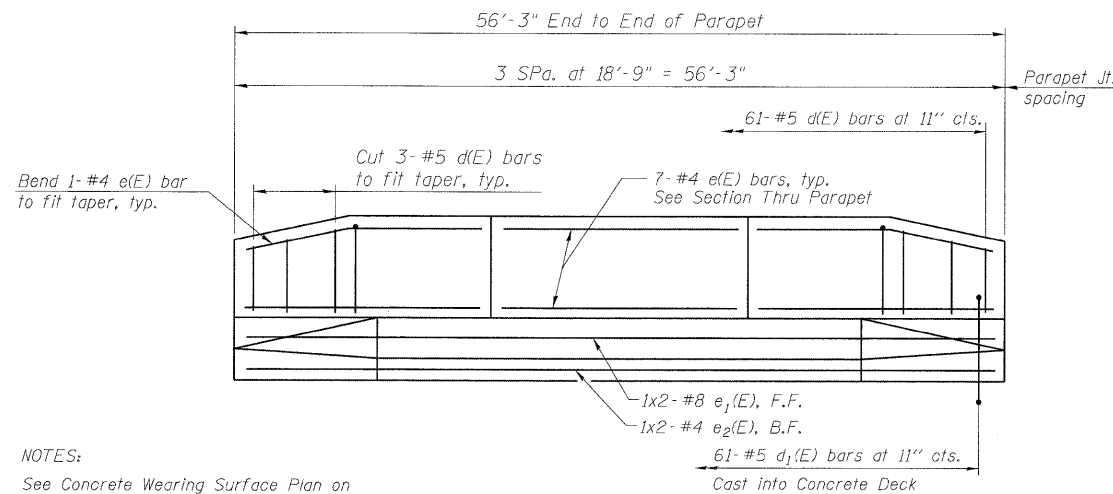
Notes:

All horizontal dimensions are at right angles to beam ends. Hatched area to be poured after concrete wearing surface is in place. See sheet S12 of S15 for bearing pad details.



SECTION THRU PARAPET

See sheet S-7 for Superstructure Bill of Materials



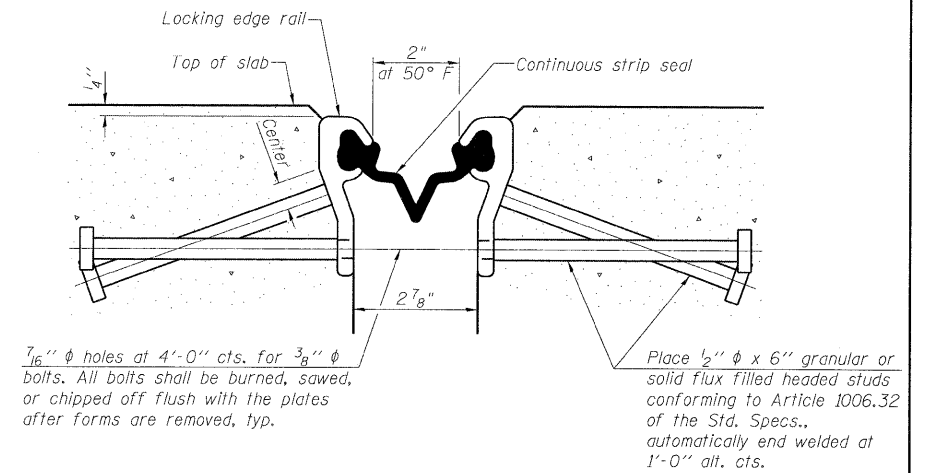
INSIDE PARAPET ELEVATION

(North side)
(South side similar)

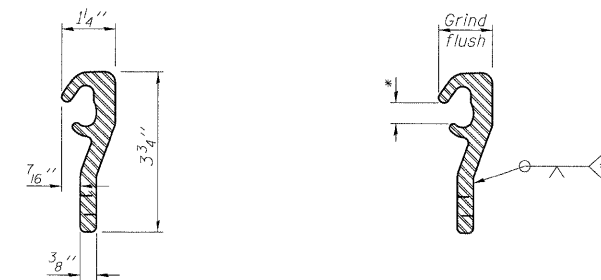
NOTES:

See Concrete Wearing Surface Plan on Sheet S7 of S15 for deck reinforcement and Bill of Material.
Min bar lap: #4 = 1'-8"
Min bar lap: #8 = 4'-6"
See S10 of S15 for parapet joint details

*Omit weld at seal opening.



SECTION THRU STRIP SEAL JOINT FOR OVERLAY OVER DECK BEAMS

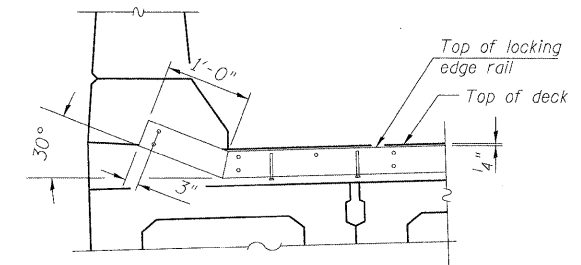


LOCKING EDGE RAIL

LOCKING EDGE RAIL SPLICE

Notes:

The strip seal shall be made continuous and shall have a minimum thickness of 1/4". The configuration of the strip seal shall match the configuration of the Locking Edge Rails. The height and thickness of the Locking Edge Rails shown are minimum dimensions. The actual configuration of the Locking Edge Rails and matching strip seal may vary from manufacturer to manufacturer. Flanged edge rails will not be allowed. The inside of the Locking Edge Rail groove shall be free of weld residue. Locking Edge Rails may be spliced at slope discontinuities and stage construction joints. The manufacturer's recommended installation methods shall be followed. All Steel components shall be galvanized after fabrication according to Article 520.03 of the Standard Specifications.



STRIP SEAL DETAILS AT PARAPET

**SUPERSTRUCTURE DETAILS
STRUCTURE NO. 016-2514**

DESIGNED -	SLV
CHECKED -	MJM
DRAWN -	SLV
CHECKED -	MJM

LONCO, INC.
CONSULTING ENGINEERS
1560 WALL ST, SUITE 222
NAPERVILLE, ILLINOIS 60563 PH: (630) 577-9100

SHEET NO. S8 OF S15 SHEETS	F.A.U. RTE. 1320	SECTION 581 B-1	COUNTY COOK	TOTAL SHEETS 33	SHEET NO. 19
	D-91-288-09		CONTRACT NO. 60F91		
FED. ROAD DIST. NO. _		ILLINOIS	FED. AID PROJECT		