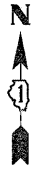
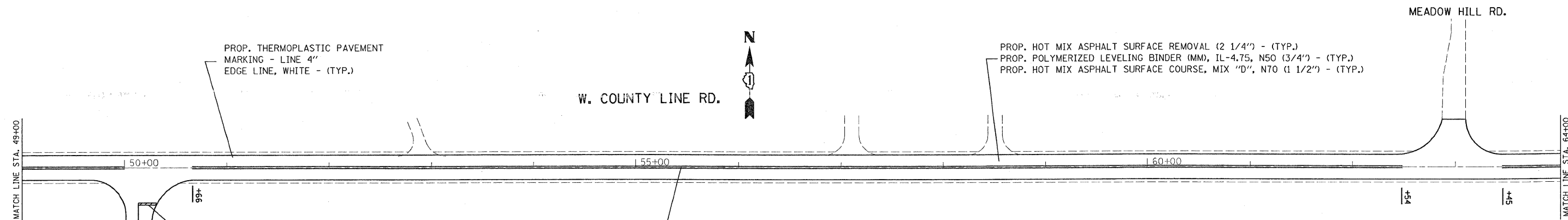


SUNNY MERIDIAN  
 PROP. THERMOPLASTIC PAVEMENT MARKING - LINE 4" EDGE LINE, WHITE - (TYP.)  
 W. COUNTY LINE RD.  
 EXISTING HMA AND AGGREGATE SHOULDER  
 PROP. THERMOPLASTIC PAVEMENT MARKING - LINE 4" DOUBLE SOLID, YELLOW - (TYP.)  
 PROP. HOT MIX ASPHALT SURFACE REMOVAL (2 1/4") - (TYP.)  
 PROP. POLYMERIZED LEVELING BINDER (MM), IL-4.75, N50 (3/4") - (TYP.)  
 PROP. HOT MIX ASPHALT SURFACE COURSE, MIX "D", N70 (1 1/2") - (TYP.)



PROP. THERMOPLASTIC PAVEMENT MARKING - LINE 4" EDGE LINE, WHITE - (TYP.)  
 W. COUNTY LINE RD.  
 MEADOW HILL RD.  
 PROP. HOT MIX ASPHALT SURFACE REMOVAL (2 1/4") - (TYP.)  
 PROP. POLYMERIZED LEVELING BINDER (MM), IL-4.75, N50 (3/4") - (TYP.)  
 PROP. HOT MIX ASPHALT SURFACE COURSE, MIX "D", N70 (1 1/2") - (TYP.)  
 BATEMAN RD.  
 PROP. THERMOPLASTIC PAVEMENT MARKING - LINE 24" STOP BAR, WHITE - (TYP.)  
 PROP. THERMOPLASTIC PAVEMENT MARKING - LINE 4" DOUBLE SOLID, YELLOW - (TYP.)

NOTES:  
 LIMIT OF RESURFACING ON SIDE-STREETS THROUGH OUT THE IMPROVEMENT SHALL BE TO THE RADIUS OF RETURN OR AS DIRECTED BY THE ENGINEER.  
 ALL FINAL PAVEMENT MARKINGS SHALL BE THERMOPLASTIC (OF THE EXTRUDED TYPE) AND SHOULD BE PLACED IN ACCORDANCE WITH "DISTRICT ONE TYPICAL PAVEMENT MARKINGS" DETAIL, (TC-13).  
 ALL RAISED REFLECTIVE PAVEMENT MARKINGS SHALL BE PLACED IN ACCORDANCE WITH THE DISTRICT ONE "TYPICAL APPLICATIONS RAISED REFLECTIVE PAVEMENT MARKER DETAIL." (TC-11).

FILE NAME =	USER NAME = banksl	DESIGNED -	REVISED -	<b>STATE OF ILLINOIS DEPARTMENT OF TRANSPORTATION</b>	<b>LAKE-COOK RD./MAIN STREET: KANE/MCHENRY/COOK COUNTY LINE EXISTING AND PROPOSED ROADWAY PLAN</b>			F.A.U. RTE.	SECTION	COUNTY	TOTAL SHEETS	SHEET NO.
ca:\pwork\pwork\banksl\08142760\0175769-shit-plan.dgn	PLOT SCALE = 50.0000' / IN.	DRAWN -	REVISED -					1270	3017 RS-3	COOK	21	7
PLOT DATE = 6/22/2009	DATE -	CHECKED -	REVISED -		SCALE: SHEET NO. OF SHEETS STA. TO STA.			CONTRACT NO. 60H59				
					ILLINOIS FED. AID PROJECT							