

STATE OF ILLINOIS
DEPARTMENT OF TRANSPORTATION
DIVISION OF HIGHWAYS

**PROPOSED
HIGHWAY PLANS**

FAU 1270: LAKE-COOK RD / MAIN STREET
KANEMCHENRY/COOK COUNTY LINE TO OLD HART ROAD
SECTION: 3017 RS-3
RESURFACING
PROJECT: *ESP-1270(004)*
MCHENRY, LAKE & COOK COUNTY
C-91-757-09

F.A.U. RTE.	SECTION	COUNTY	TOTAL SHEETS	SHEET NO.
1270	3017 RS-3	COOK	21	1
FED. ROAD DIST. NO.	ILLINOIS	CONTRACT NO.	60H59	

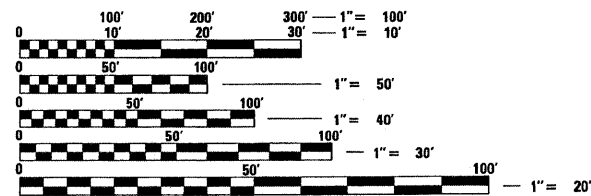
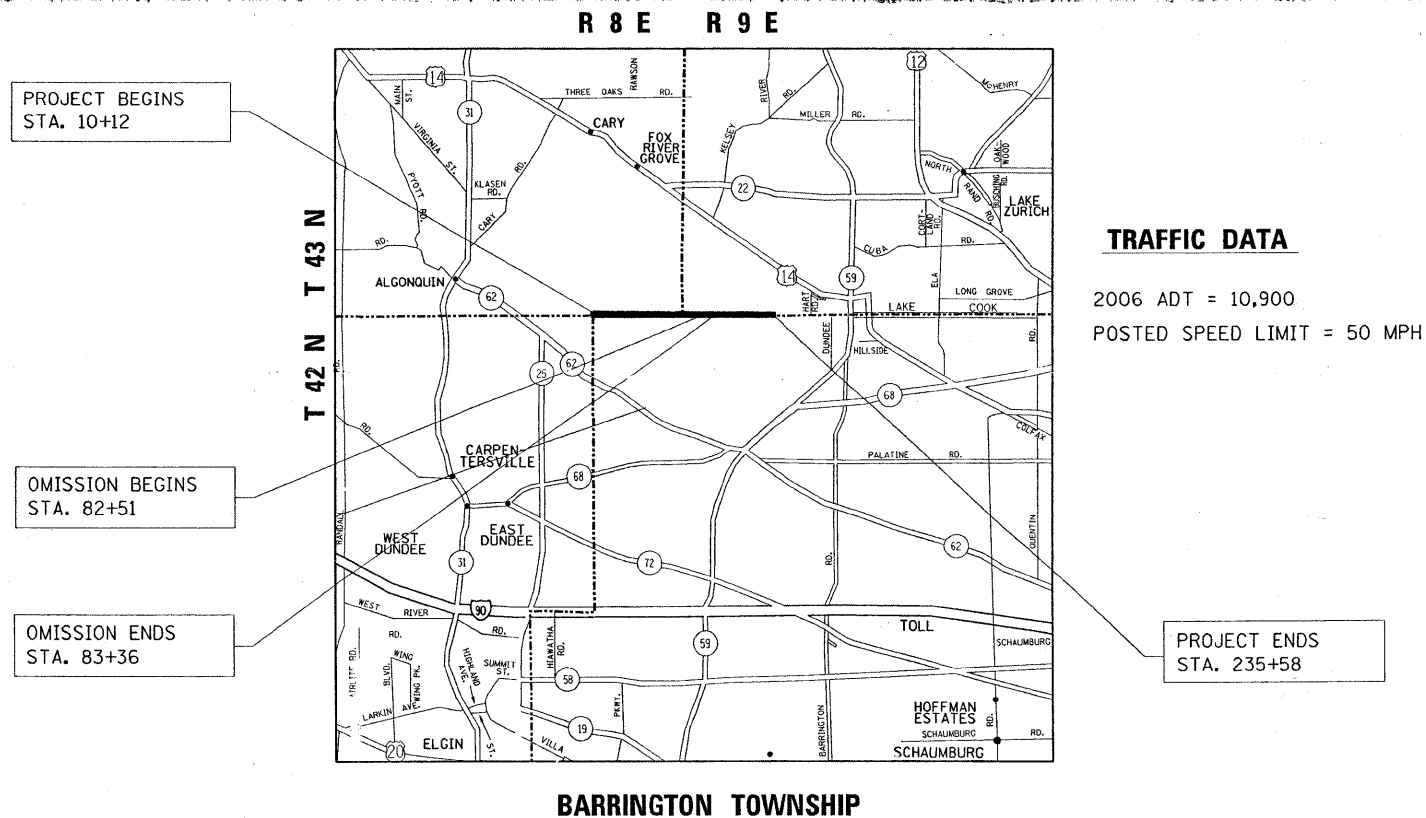
D -91-757-09



LOCATION OF SECTION INDICATED THUS: - ■ -

FOR INDEX OF SHEETS, SEE SHEET NO. 2

THE PROJECT IS LOCATED IN THE VILLAGE OF BARRINGTON HILLS



FULL SIZE PLANS HAVE BEEN PREPARED USING STANDARD ENGINEERING SCALES. REDUCED SIZED PLANS WILL NOT CONFORM TO STANDARD SCALES. IN MAKING MEASUREMENTS ON REDUCED PLANS, THE ABOVE SCALES MAY BE USED.

J.U.L.I.E.
JOINT UTILITY LOCATION INFORMATION FOR EXCAVATION
1-800-892-0123
OR 811

PROJECT ENGINEER DAN WILGREEN (847) 705-4240
PROJECT MANAGER KEN ENG (847) 705-4247

CONTRACT NO. 60H59

GROSS LENGTH OF PROJECT = 22,546 LINEAL FEET = 4.27 MILE
NET LENGTH OF PROJECT = 22,461 LINEAL FEET = 4.25 MILES

STATE OF ILLINOIS
DEPARTMENT OF TRANSPORTATION
DIVISION OF HIGHWAYS

SUBMITTED June 24 20 09

Dan O'Neil
DEPUTY DIRECTOR OF HIGHWAYS, REGION ENGINEER

August 14, 20 09
Charles G. Ingerson
ENGINEER OF DESIGN AND ENVIRONMENT

August 14, 20 09
Christine M. Reed
DIRECTOR OF HIGHWAYS, CHIEF ENGINEER

**PRINTED BY THE AUTHORITY
OF THE STATE OF ILLINOIS**

INDEX OF SHEETS

STATE STANDARDS

PLAN NOTES

<u>DESCRIPTION</u>		<u>STANDARD NO.</u>	<u>DESCRIPTION</u>
1	COVER SHEET		
2	INDEX OF SHEETS, STATE STANDARDS, PLAN NOTES	000001-05	STANDARD SYMBOLS, ABBREVIATIONS AND PATTERNS
3	SUMMARY OF QUANTITIES	442201-03	CLASS C AND D PATCHES
4 - 5	TYPICAL SECTIONS	701301-03	LANE CLOSURE, 2L, 2W, SHORT TIME OPERATIONS
		701306-02	LANE CLOSURE 2L, 2W SLOW MOVING OPERATIONS- DAY ONLY FOR SPEEDS \geq 45 MPH
6 - 13	ROADWAY AND PAVEMENT MARKING PLANS	701311-03	LANE CLOSURE, 2L, 2W, MOVING DAY ONLY OPERATIONS
14	PAVEMENT PATCHING FOR HMA SURFACED PAVEMENT	701336-05	LANE CLOSURE 2L, 2W WORK AREAS IN SERIES FOR SPEEDS \geq 45 MPH
15	BUTT JOINT AND HMA TAPER DETAILS	701501-05	URBAN LANE CLOSURE 2L, 2W UNDIVIDED
16	TRAFFIC CONTROL AND PROTECTION FOR SIDE ROADS, INTERSECTIONS, AND DRIVEWAYS	701701-06	URBAN LANE CLOSURE, MULTILANE INTERSECTION
		701901-01	TRAFFIC CONTROL DEVICES
17	TYPICAL APPLICATIONS RAISED REFLECTIVE PAVEMENT MARKERS (SNOW-PLOW RESISTANT)		
18	DISTRICT ONE TYPICAL PAVEMENT MARKINGS		
19	TRAFFIC CONTROL AND PROTECTION AT TURN BAYS (TO REMAIN OPEN TO TRAFFIC)		
20	PAVEMENT MARKING LETTERS AND SYMBOLS FOR TRAFFIC STAGING		
21	ARTERIAL ROAD INFORMATION SIGN		

BEFORE STARTING ANY EXCAVATION, THE CONTRACTOR SHALL CALL "JULIE" AT 800-892-0123 FOR FIELD LOCATIONS OF BURIED ELECTRIC, TELEPHONE AND GAS FACILITIES. (48 HOUR NOTIFICATION IS REQUIRED)

THE CONTRACTOR SHALL COORDINATE CONSTRUCTION ACTIVITIES WITH UTILITY COMPANIES AND THE VILLAGE OF BARRINGTON HILLS.

THE CONTRACTOR WILL NOT BE ALLOWED TO SET UP A YARD OR FIELD OFFICE ON STATE PROPERTY WITHOUT WRITTEN PERMISSION FROM THE DEPARTMENT.

BUTT JOINTS WILL BE INSTALLED AT THE ENDS OF ALL RESURFACING (WHERE RESURFACING MEETS EXISTING PAVEMENT), IN ACCORDANCE WITH THE "BUTT JOINT AND HOT-MIX ASPHALT TAPER DETAILS" SHEETS INCLUDED IN THE PLANS, UNLESS OTHERWISE SPECIFIED.

THE RESIDENT ENGINEER SHALL CONTACT MR. WALLY CZARNY AREA TRAFFIC FIELD ENGINEER AT (773) 685-4342 A MINIMUM OF 2 WEEKS PRIOR TO PLACEMENT OF PERMANENT PAVEMENT MARKING.

THE CONTRACTOR SHALL CONTACT THE DISTRICT ONE ARTERIAL TRAFFIC CONTROL SUPERVISOR AT (847) 705-4470 A MINIMUM OF 72 HOURS PRIOR TO START OF WORK.

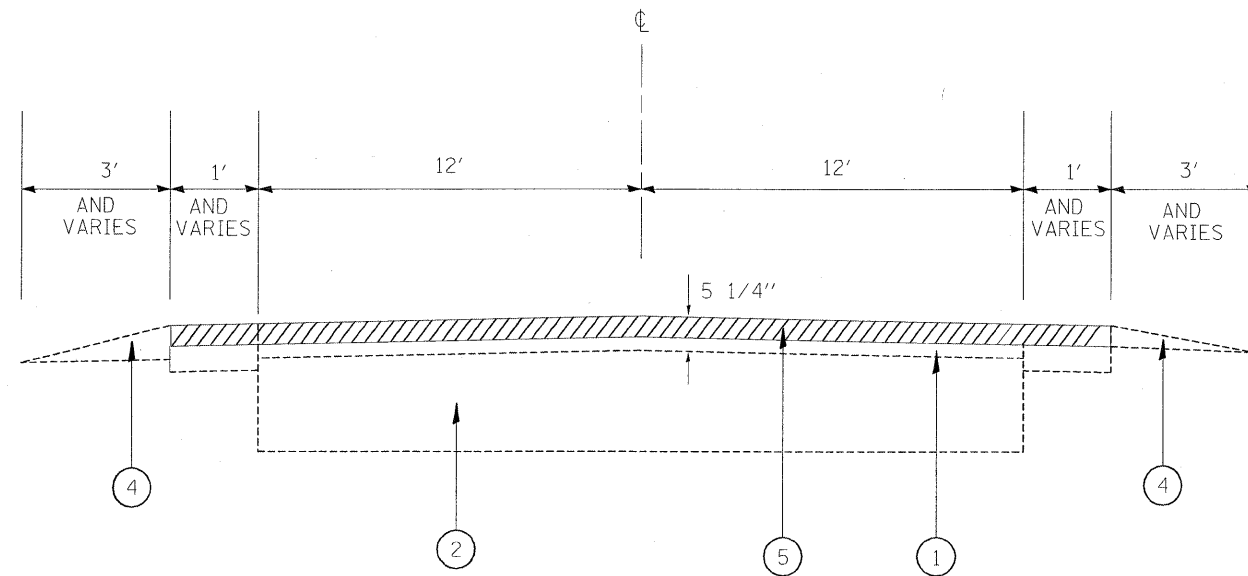
10 FEET (3 METERS) TRANSITION SHALL BE USED TO MATCH PROPOSED CURB AND GUTTER TO EXISTING CURB AND GUTTERS IN THE FIELD, UNLESS OTHERWISE SHOWN. THE TRANSITION SHALL BE PAID FOR AT THE CONTRACT UNIT PRICE FOR THE PROPOSED ITEMS OR WORK SPECIFIED.

WHEN MILLED PAVEMENT IS OPEN TO TRAFFIC THE MAXIMUM GRADE DIFFERENTIAL BETWEEN PASSES OF THE MILLING MACHINE SHALL NOT EXCEED 1/2 INCHES (40MM) WHERE THE SPEED LIMIT IS 45 MPH (80 KM/H) OR LESS AND 1 INCH (25 MM) WHERE THE SPEED LIMIT IS GREATER THAN 45 MPH (80 KM/H). WITH WRITTEN APPROVAL FROM THE ENGINEER, A MAXIMUM GRADE DIFFERENTIAL OF 3 INCHES (75 MM) MAY BE ALLOWED IF THE EDGE OF THE MILLING IS SLOPED A MINIMUM 1:3 (V:H).

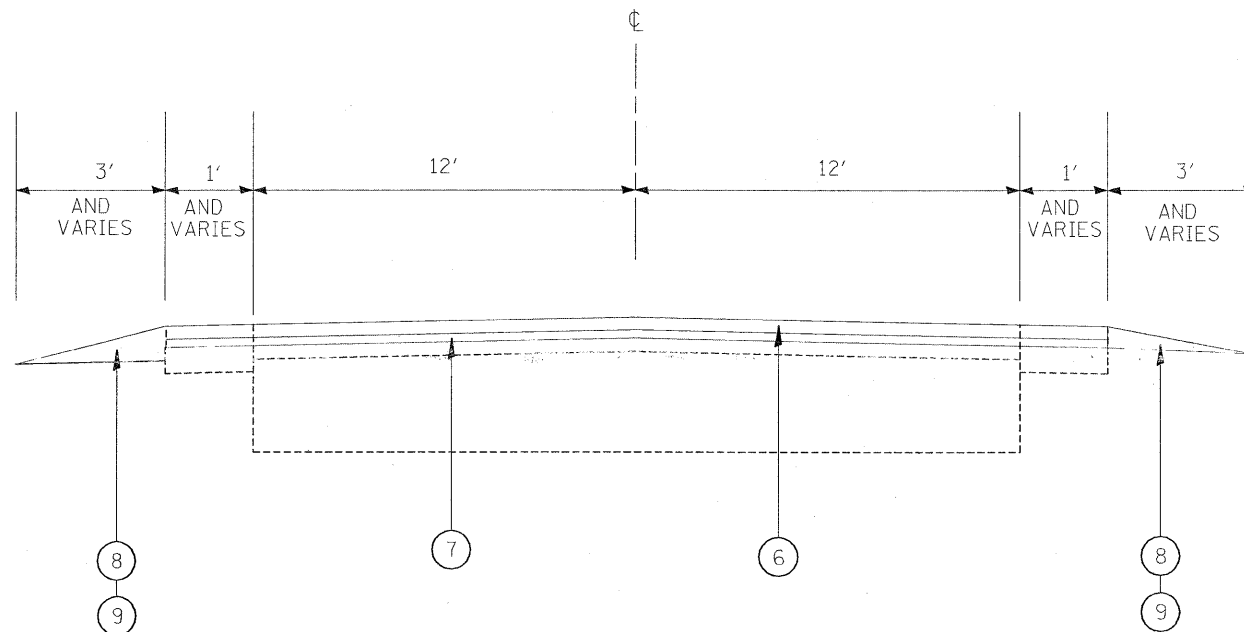
FILE NAME =	USER NAME = banks1	DESIGNED -	REVISED -	STATE OF ILLINOIS DEPARTMENT OF TRANSPORTATION	LAKE-COOK RD./MAIN STREET-KANE/MCHENRY/COOK COUNTY LINE INDEX OF SHEETS, STATE STANDARDS & GENERAL NOTES		F.A.U. RTE.	SECTION	COUNTY	TOTAL SHEETS	SHEET NO.
cr:\pe_work\pwr\dot\banks1\nd8142768\0175789\shd.plandgn	PLOT SCALE = 49.9999' / IN.	DRAWN -	REVISED -				1270	3017 RS-3	COOK	21	2
PLOT DATE = 6/22/2009	DATE -	CHECKED -	REVISED -		SCALE: SHEET NO. OF SHEETS STA. TO STA.		FED. ROAD DIST. NO. 1 ILLINOIS FED. AID PROJECT				
							CONTRACT NO. 60H59				

SUMMARY OF QUANTITIES			URBAN 100% FED.	CONSTRUCTION TYPE CODE					SUMMARY OF QUANTITIES			URBAN 100% FED.	CONSTRUCTION TYPE CODE						
CODE NO	ITEM	UNIT	TOTAL QUANTITIES	MCHENRY 1000	LAKE 1000	COOK 1000				CODE NO	ITEM	UNIT	TOTAL QUANTITIES	MCHENRY 1000	LAKE 1000	COOK 1000			
20201006	GRADING AND SHAPING SHOULDERS	UNIT	451	103	122	226				* 78000600	THERMOPLASTIC PAVEMENT MARKING - LINE 12"	FOOT	192	44	52	96			
40600200	BITUMINOUS MATERIALS (PRIME COAT)	TON	27	6	7	14				* 78000650	THERMOPLASTIC PAVEMENT MARKING - LINE 24"	FOOT	80	18	22	40			
40600300	AGGREGATE (PRIME COAT)	TON	135	31	36	68				* 78100100	RAISED REFLECTIVE PAVEMENT MARKER	EACH	556	128	150	278			
40600400	MIXTURE FOR CRACKS, JOINTS, AND FLANGEWAYS	TON	34	8	9	17				78300200	RAISED REFLECTIVE PAVEMENT MARKER REMOVAL	EACH	556	128	150	278			
40600895	CONSTRUCTING TEST STRIP	EACH	1	0.2	0.3	0.5				X0322256	TEMPORARY INFORMATION SIGNING	SO FT	51.4		25.7	25.7			
40600982	HOT-MIX ASPHALT SURFACE REMOVAL - BUTT JOINT	SO YD	275	63	74	138				X4067107	POLYMERIZED LEVELING BINDER (MACHINE METHOD), IL-4.75, N50	TON	2666	613	720	1333			
40603340	HOT-MIX ASPHALT SURFACE COURSE, MIX "D", N70	TON	5688	1308	1536	2844													
44000158	HOT-MIX ASPHALT SURFACE REMOVAL, 2 1/4"	SO YD	67716	15575	18283	33858													
44201785	CLASS D PATCHES, TYPE I, 12 INCH	SO YD	30	7	8	15													
44201789	CLASS D PATCHES, TYPE II, 12 INCH	SO YD	360	83	97	180													
44201794	CLASS D PATCHES, TYPE III, 12 INCH	SO YD	64	15	17	32													
48102100	AGGREGATE WEDGE SHOULDER, TYPE B	TON	2442	562	659	1221													
67000400	ENGINEER'S FIELD OFFICE, TYPE A	CAL MO	6	1	2	3													
67100100	MOBILIZATION	L SUM	1	0.2	0.3	0.5													
70100460	TRAFFIC CONTROL AND PROTECTION, STANDARD 701306	L SUM	1	0.2	0.3	0.5													
70100600	TRAFFIC CONTROL AND PROTECTION, STANDARD 701336	L SUM	1	0.2	0.3	0.5													
70102620	TRAFFIC CONTROL AND PROTECTION, STANDARD 701501	L SUM	1	0.2	0.3	0.5													
70102635	TRAFFIC CONTROL AND PROTECTION, STANDARD 701701	L SUM	1	0.2	0.3	0.5													
70300100	SHORT-TERM PAVEMENT MARKING	FOOT	7136	1642	1927	3567													
70300210	TEMPORARY PAVEMENT MARKING - LETTERS AND SYMBOLS	SO FT	145	33	39	73													
70300220	TEMPORARY PAVEMENT MARKING - LINE 4"	FOOT	78515	18059	21199	39257													
70300240	TEMPORARY PAVEMENT MARKING - LINE 6"	FOOT	243	55	66	122													
70300260	TEMPORARY PAVEMENT MARKING - LINE 12"	FOOT	192	44	52	96													
70300280	TEMPORARY PAVEMENT MARKING - LINE 24"	FOOT	80	18	22	40													
70301000	WORK ZONE PAVEMENT MARKING REMOVAL	SO FT	2379	547	642	1190													
* 78000100	THERMOPLASTIC PAVEMENT MARKING - LETTERS AND SYMBOLS	SO FT	145	33	39	73													
* 78000200	THERMOPLASTIC PAVEMENT MARKING - LINE 4"	FOOT	78515	18059	21199	39257													
* 78000400	THERMOPLASTIC PAVEMENT MARKING - LINE 6"	FOOT	244	56	66	122													

* SPECIALTY ITEMS



LAKE-COOK ROAD
 EXISTING TYPICAL SECTION
 STA. 10+12 TO STA. 171+00
 STA. 182+00 TO STA. 235+58



LAKE-COOK ROAD
 PROPOSED TYPICAL SECTION
 STA. 10+12 TO STA. 171+00
 STA. 182+00 TO STA. 235+58

LEGEND

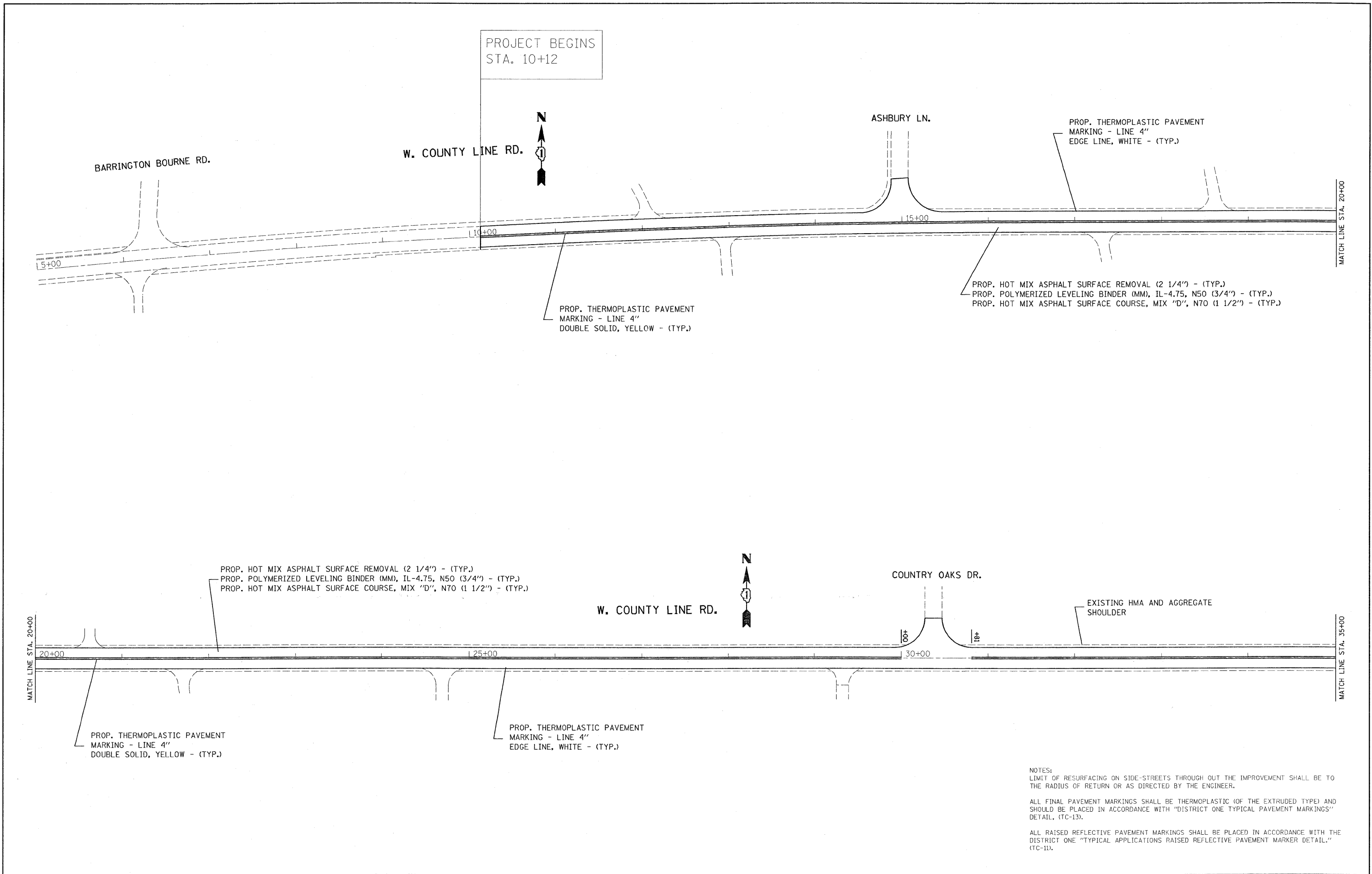
- ① EXISTING HOT-MIX ASPHALT SURFACE, 5 1/4" (+/-)
- ② EXISTING P.C.C. BASE COURSE, 9" (+/-)
- ③ EXISTING COMBINATION CONCRETE CURB & GUTTER, TYPE B-6.12
- ④ EXISTING AGGREGATE SHOULDER
- ⑤ PROPOSED HOT-MIX ASPHALT SURFACE REMOVAL, 2 1/4"
- ⑥ PROPOSED HOT-MIX ASPHALT SURFACE COURSE, MIX "D", N70, 1 1/2"
- ⑦ PROPOSED POLYMERIZED LEVELING BINDER (MACHINE METHOD), IL-4.5, N50, 3/4"
- ⑧ PROPOSED AGGREGATE WEDGE SHOULDER TYPE B
- ⑨ PROPOSED GRADING AND SHAPING SHOULDERS

MILLING TO BE DONE BEFORE PATCHING

HOT-MIX ASPHALT MIXTURE REQUIREMENTS		
MIXTURE TYPE	AC TYPE	AIR VOIDS(%)
PAVEMENT RESURFACING		
HOT-MIX ASPHALT SURFACE COURSE, MIX "D", N70 (IL-9.5MM)	PG 64-22	4% @ 70 GYR.
POLYMERIZED LEVELING BINDER (MM), IL-4.75, N50	SBS/SBR PG 76-28-22	4% @ 50 GYR.
PATCHING		
CLASS D PATCHES TYPE I, II, III, 9", HMA BINDER IL-19 MM	PG 64-22*	4% @ 70 GYR.

* WHEN RAP EXCEEDS 20%, THE NEW ASPHALT BINDER IN THE MIX SHALL BE PG 58-22.

NOTE: THE UNIT WEIGHT USED TO CALCULATE ALL HOT-MIX ASPHALT SURFACE MIXTURE QUANTITIES IS 112 LBS/SQ YD/IN.

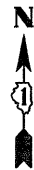
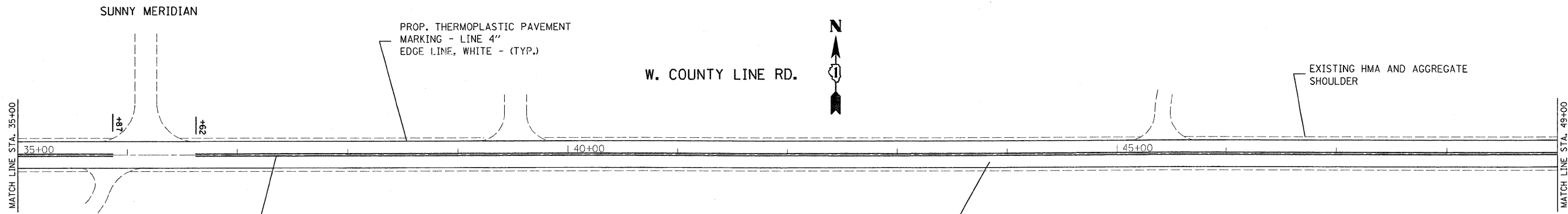


NOTES:
 LIMIT OF RESURFACING ON SIDE-STREETS THROUGH OUT THE IMPROVEMENT SHALL BE TO THE RADIUS OF RETURN OR AS DIRECTED BY THE ENGINEER.

ALL FINAL PAVEMENT MARKINGS SHALL BE THERMOPLASTIC (OF THE EXTRUDED TYPE) AND SHOULD BE PLACED IN ACCORDANCE WITH "DISTRICT ONE TYPICAL PAVEMENT MARKINGS" DETAIL, (TC-13).

ALL RAISED REFLECTIVE PAVEMENT MARKINGS SHALL BE PLACED IN ACCORDANCE WITH THE DISTRICT ONE "TYPICAL APPLICATIONS RAISED REFLECTIVE PAVEMENT MARKER DETAIL," (TC-11).

FILE NAME =	USER NAME = banks1	DESIGNED -	REVISED -	STATE OF ILLINOIS DEPARTMENT OF TRANSPORTATION	LAKE-COOK RD./MAIN STREET: KANE/CHENRY/COOK COUNTY LINE EXISTING AND PROPOSED ROADWAY PLAN	F.A.U. RTE.	SECTION	COUNTY	TOTAL SHEETS	SHEET NO.	
c:\pw_work\pwwork\banks1\d0142760\0175769\shtrplan.dgn		DRAWN -	REVISED -			1270	3017 RS-3	COOK	21	6	
PLOT SCALE = 50.0000' / IN.		CHECKED -	REVISED -			CONTRACT NO. 60H59					
PLOT DATE = 6/22/2009		DATE -	REVISED -			ILLINOIS FED. AID PROJECT					
					SCALE:	SHEET NO. OF SHEETS		STA. TO STA.			



SUNNY MERIDIAN

PROP. THERMOPLASTIC PAVEMENT MARKING - LINE 4" EDGE LINE, WHITE - (TYP.)

W. COUNTY LINE RD.

EXISTING HMA AND AGGREGATE SHOULDER

MATCH LINE STA. 35+00

35+00

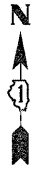
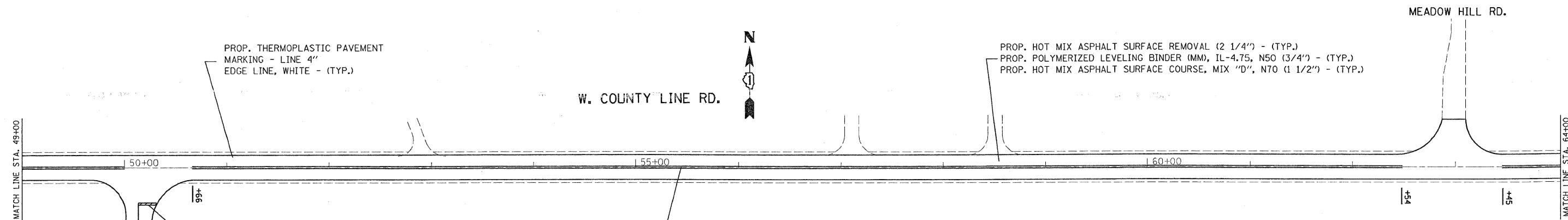
40+00

45+00

MATCH LINE STA. 49+00

PROP. THERMOPLASTIC PAVEMENT MARKING - LINE 4" DOUBLE SOLID, YELLOW - (TYP.)

PROP. HOT MIX ASPHALT SURFACE REMOVAL (2 1/4") - (TYP.)
 PROP. POLYMERIZED LEVELING BINDER (MM), IL-4.75, N50 (3/4") - (TYP.)
 PROP. HOT MIX ASPHALT SURFACE COURSE, MIX "D", N70 (1 1/2") - (TYP.)



MEADOW HILL RD.

PROP. THERMOPLASTIC PAVEMENT MARKING - LINE 4" EDGE LINE, WHITE - (TYP.)

W. COUNTY LINE RD.

PROP. HOT MIX ASPHALT SURFACE REMOVAL (2 1/4") - (TYP.)
 PROP. POLYMERIZED LEVELING BINDER (MM), IL-4.75, N50 (3/4") - (TYP.)
 PROP. HOT MIX ASPHALT SURFACE COURSE, MIX "D", N70 (1 1/2") - (TYP.)

MATCH LINE STA. 49+00

50+00

55+00

60+00

MATCH LINE STA. 64+00

BATEMAN RD.

PROP. THERMOPLASTIC PAVEMENT MARKING - LINE 24" STOP BAR, WHITE - (TYP.)

PROP. THERMOPLASTIC PAVEMENT MARKING - LINE 4" DOUBLE SOLID, YELLOW - (TYP.)

NOTES:
 LIMIT OF RESURFACING ON SIDE-STREETS THROUGH OUT THE IMPROVEMENT SHALL BE TO THE RADIUS OF RETURN OR AS DIRECTED BY THE ENGINEER.

ALL FINAL PAVEMENT MARKINGS SHALL BE THERMOPLASTIC (OF THE EXTRUDED TYPE) AND SHOULD BE PLACED IN ACCORDANCE WITH "DISTRICT ONE TYPICAL PAVEMENT MARKINGS" DETAIL, (TC-13).

ALL RAISED REFLECTIVE PAVEMENT MARKINGS SHALL BE PLACED IN ACCORDANCE WITH THE DISTRICT ONE "TYPICAL APPLICATIONS RAISED REFLECTIVE PAVEMENT MARKER DETAIL." (TC-11).

FILE NAME =	USER NAME = banksl	DESIGNED -	REVISED -	STATE OF ILLINOIS DEPARTMENT OF TRANSPORTATION	LAKE-COOK RD./MAIN STREET: KANE/MCHENRY/COOK COUNTY LINE EXISTING AND PROPOSED ROADWAY PLAN	F.A.U. RTE.	SECTION	COUNTY	TOTAL SHEETS	SHEET NO.	
ca:\pwork\pwork\banksl\08142760\0175769-shit-plan.dgn	PLOT SCALE = 50.0000' / IN.	DRAWN -	REVISED -			1270	3017 RS-3	COOK	21	7	
PLOT DATE = 6/22/2009	DATE -	CHECKED -	REVISED -			CONTRACT NO. 60H59					
						ILLINOIS FED. AID PROJECT					



W. COUNTY LINE RD.

PROP. HOT MIX ASPHALT SURFACE REMOVAL (2 1/4") - (TYP.)
 PROP. POLYMERIZED LEVELING BINDER (MM), IL-4.75, N50 (3/4") - (TYP.)
 PROP. HOT MIX ASPHALT SURFACE COURSE, MIX "D", N70 (1 1/2") - (TYP.)

PROP. THERMOPLASTIC PAVEMENT
 MARKING - LINE 4"
 EDGE LINE, WHITE - (TYP.)

PROP. THERMOPLASTIC PAVEMENT
 MARKING - LINE 4"
 DOUBLE SOLID, YELLOW - (TYP.)

PROP. THERMOPLASTIC PAVEMENT
 MARKING - LINE 4"
 SKIP DASH, YELLOW - (TYP.)
 (10' DASH, 30' SKIP)

EXISTING HMA AND AGGREGATE
 SHOULDER

MATCH LINE STA. 64+00

MATCH LINE STA. 79+00

65+00

70+00

75+00

80+

OMISSION BEGINS
 STA. 82+51

OMISSION ENDS
 STA. 83+36

PROP. THERMOPLASTIC PAVEMENT
 MARKING - LINE 4"
 EDGE LINE, WHITE - (TYP.)



W. COUNTY LINE RD.

PROP. HOT MIX ASPHALT SURFACE REMOVAL (2 1/4") - (TYP.)
 PROP. POLYMERIZED LEVELING BINDER (MM), IL-4.75, N50 (3/4") - (TYP.)
 PROP. HOT MIX ASPHALT SURFACE COURSE, MIX "D", N70 (1 1/2") - (TYP.)

EXISTING HMA AND AGGREGATE
 SHOULDER

MATCH LINE STA. 79+00

MATCH LINE STA. 94+00

80+00

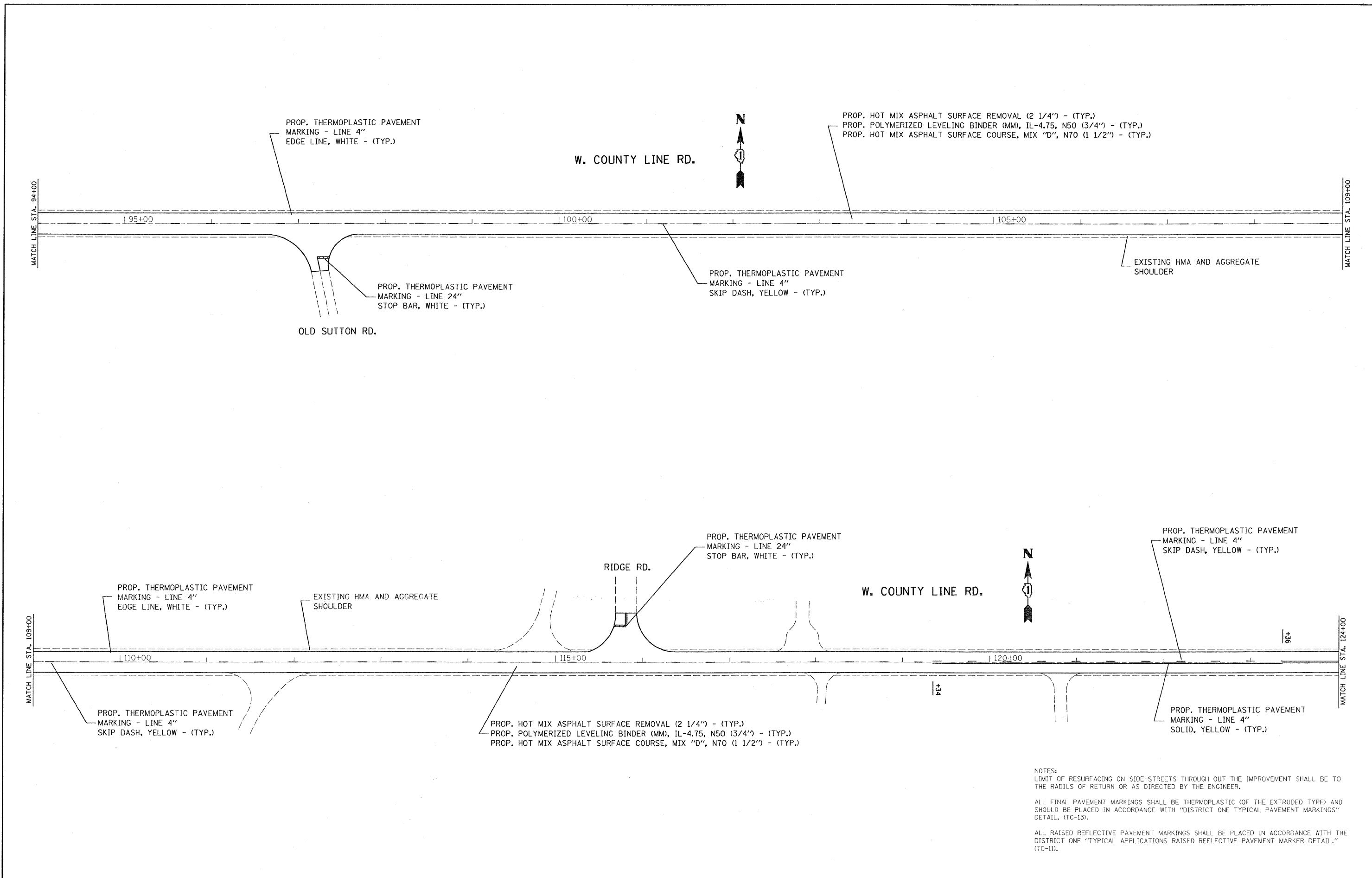
85+00

90+00

PROP. THERMOPLASTIC PAVEMENT
 MARKING - LINE 4"
 SKIP DASH, YELLOW - (TYP.)

NOTES:
 LIMIT OF RESURFACING ON SIDE-STREETS THROUGH OUT THE IMPROVEMENT SHALL BE TO THE RADIUS OF RETURN OR AS DIRECTED BY THE ENGINEER.
 ALL FINAL PAVEMENT MARKINGS SHALL BE THERMOPLASTIC (OF THE EXTRUDED TYPE) AND SHOULD BE PLACED IN ACCORDANCE WITH "DISTRICT ONE TYPICAL PAVEMENT MARKINGS" DETAIL, (TC-13).
 ALL RAISED REFLECTIVE PAVEMENT MARKINGS SHALL BE PLACED IN ACCORDANCE WITH THE DISTRICT ONE "TYPICAL APPLICATIONS RAISED REFLECTIVE PAVEMENT MARKER DETAIL," (TC-11).

FILE NAME =	USER NAME = bankal	DESIGNED -	REVISED -	STATE OF ILLINOIS DEPARTMENT OF TRANSPORTATION	LAKE-COOK RD./MAIN STREET: KANE/MCHENRY/COOK COUNTY LINE EXISTING AND PROPOSED ROADWAY PLAN	F.A.U. RTE.	SECTION	COUNTY	TOTAL SHEETS	SHEET NO.	
ca:\pwork\pwork\bankal\0142760\0175789-shr-pln.dgn	PLOT SCALE = 50.0000' / IN.	DRAWN -	REVISED -			1270	3017 RS-3	COOK	21	8	
PLOT DATE = 6/22/2009	DATE -	CHECKED -	REVISED -			CONTRACT NO. 60H59					
		DATE -	REVISED -			ILLINOIS FED. AID PROJECT					

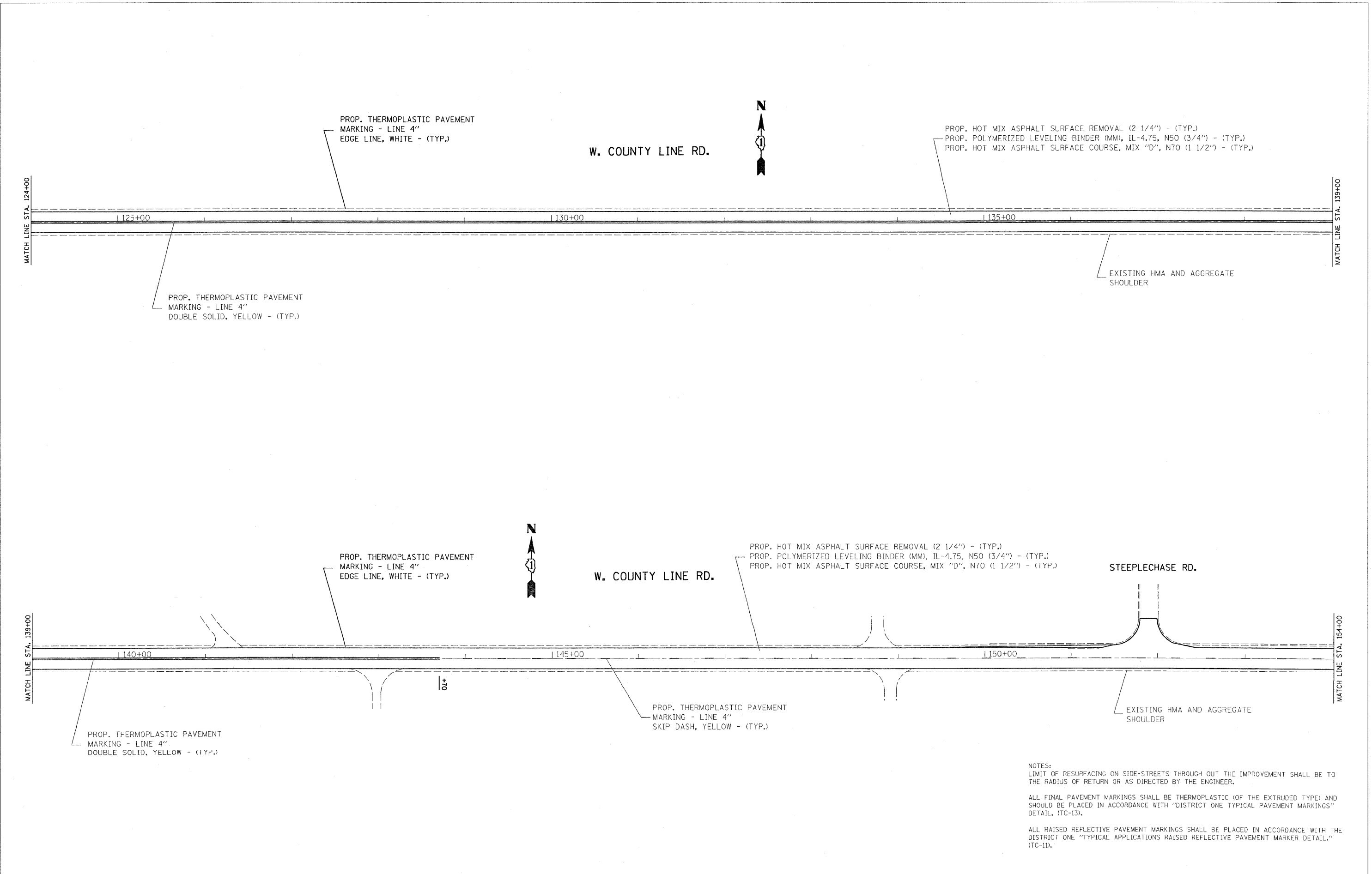


NOTES:
 LIMIT OF RESURFACING ON SIDE-STREETS THROUGH OUT THE IMPROVEMENT SHALL BE TO THE RADIUS OF RETURN OR AS DIRECTED BY THE ENGINEER.

ALL FINAL PAVEMENT MARKINGS SHALL BE THERMOPLASTIC (OF THE EXTRUDED TYPE) AND SHOULD BE PLACED IN ACCORDANCE WITH "DISTRICT ONE TYPICAL PAVEMENT MARKINGS" DETAIL, (TC-13).

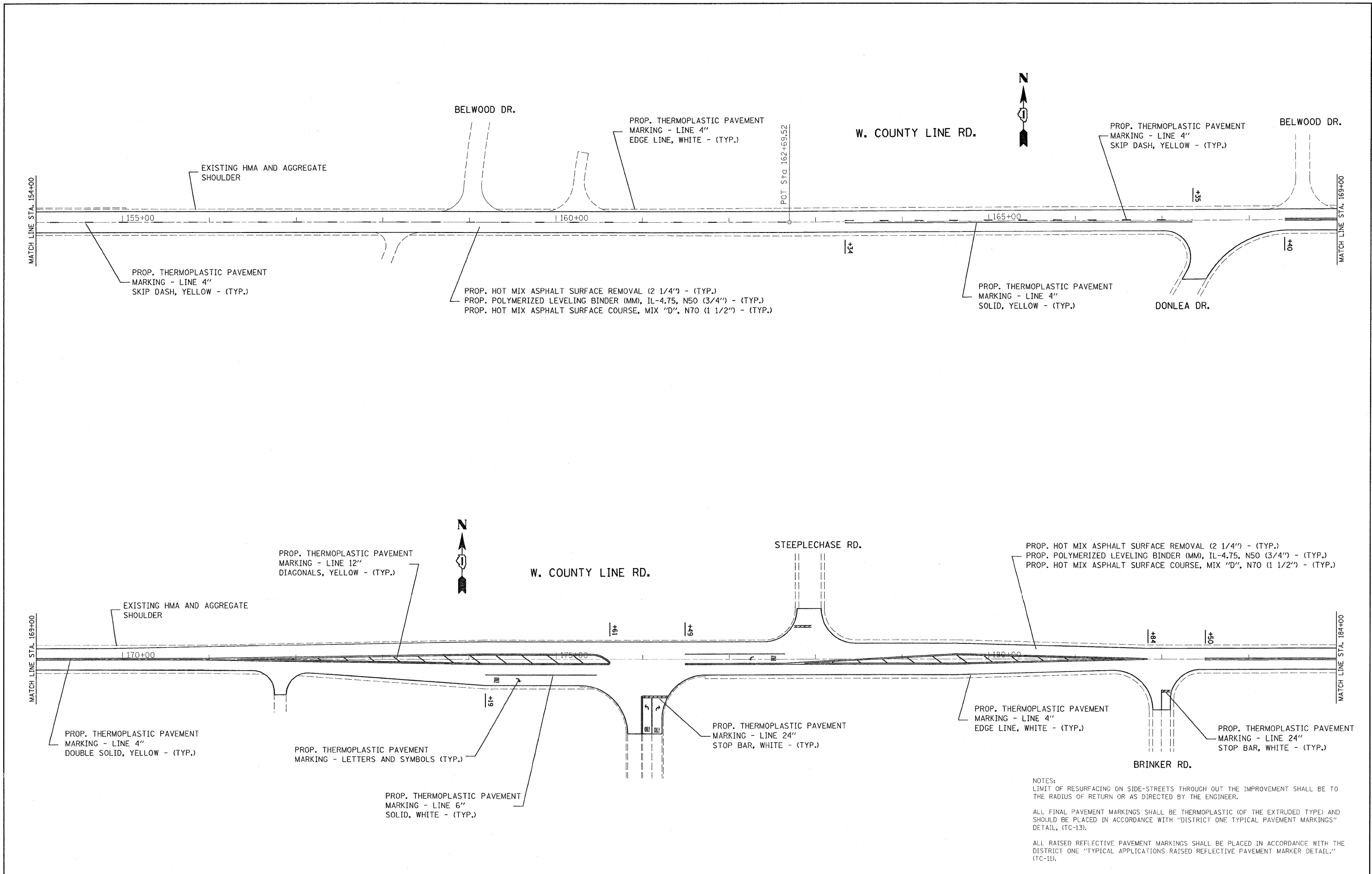
ALL RAISED REFLECTIVE PAVEMENT MARKINGS SHALL BE PLACED IN ACCORDANCE WITH THE DISTRICT ONE "TYPICAL APPLICATIONS RAISED REFLECTIVE PAVEMENT MARKER DETAIL," (TC-11).

FILE NAME =	USER NAME = banks1	DESIGNED -	REVISED -	STATE OF ILLINOIS DEPARTMENT OF TRANSPORTATION	LAKE-COOK RD./MAIN STREET: KANE/MCHENRY/COOK COUNTY LINE EXISTING AND PROPOSED ROADWAY PLAN	F.A.U. RTE.	SECTION	COUNTY	TOTAL SHEETS	SHEET NO.	
ca:\pw\work\pw\dot\banks1\0142760\0175769-sht-plan.dgn	PLOT SCALE = 50.0000' / IN.	DRAWN -	REVISED -			1270	3017 RS-3	COOK	21	9	
PLOT DATE = 6/22/2009	DATE -	CHECKED -	REVISED -			CONTRACT NO. 60H59					
						ILLINOIS FED. AID PROJECT					



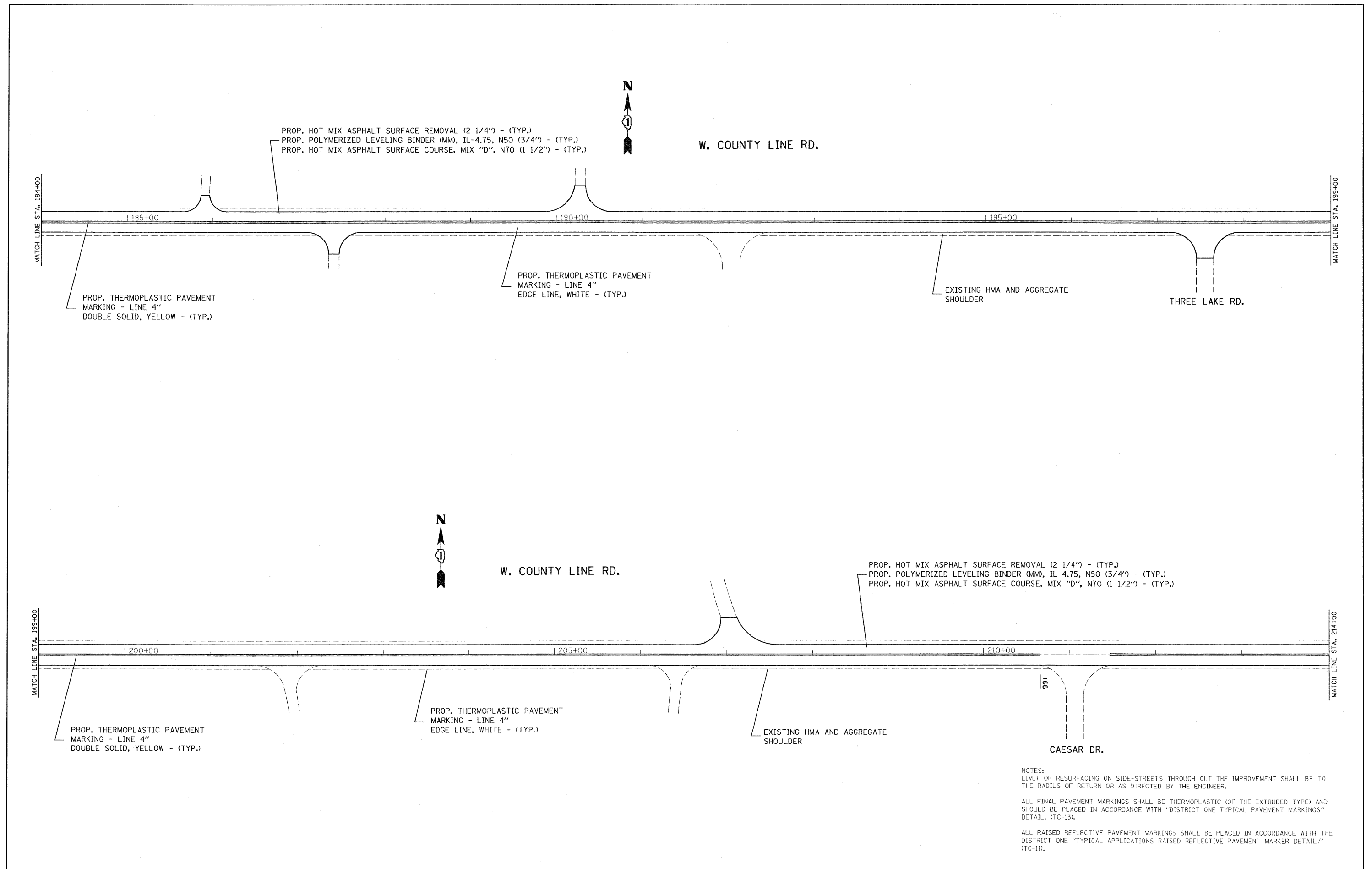
NOTES:
 LIMIT OF RESURFACING ON SIDE-STREETS THROUGH OUT THE IMPROVEMENT SHALL BE TO THE RADIUS OF RETURN OR AS DIRECTED BY THE ENGINEER.
 ALL FINAL PAVEMENT MARKINGS SHALL BE THERMOPLASTIC (OF THE EXTRUDED TYPE) AND SHOULD BE PLACED IN ACCORDANCE WITH "DISTRICT ONE TYPICAL PAVEMENT MARKINGS" DETAIL, (TC-13).
 ALL RAISED REFLECTIVE PAVEMENT MARKINGS SHALL BE PLACED IN ACCORDANCE WITH THE DISTRICT ONE "TYPICAL APPLICATIONS RAISED REFLECTIVE PAVEMENT MARKER DETAIL" (TC-11).

FILE NAME =	USER NAME = banks1	DESIGNED -	REVISED -	STATE OF ILLINOIS DEPARTMENT OF TRANSPORTATION	LAKE-COOK RD./MAIN STREET: KANE/MCHENRY/COOK COUNTY LINE EXISTING AND PROPOSED ROADWAY PLAN			F.A.U. RTE.	SECTION	COUNTY	TOTAL SHEETS	SHEET NO.
c:\p\work\p\ridat\banks1\0142760\0175729-sht-plan.dgn	PLOT SCALE = 50,000 ' / IN.	DRAWN -	REVISED -					1270	3017 RS-3	COOK	21	10
	PLOT DATE = 6/22/2009	CHECKED -	REVISED -		SCALE: SHEET NO. OF SHEETS STA. TO STA.			ILLINOIS FED. AID PROJECT CONTRACT NO. 60H59				
		DATE -	REVISED -									

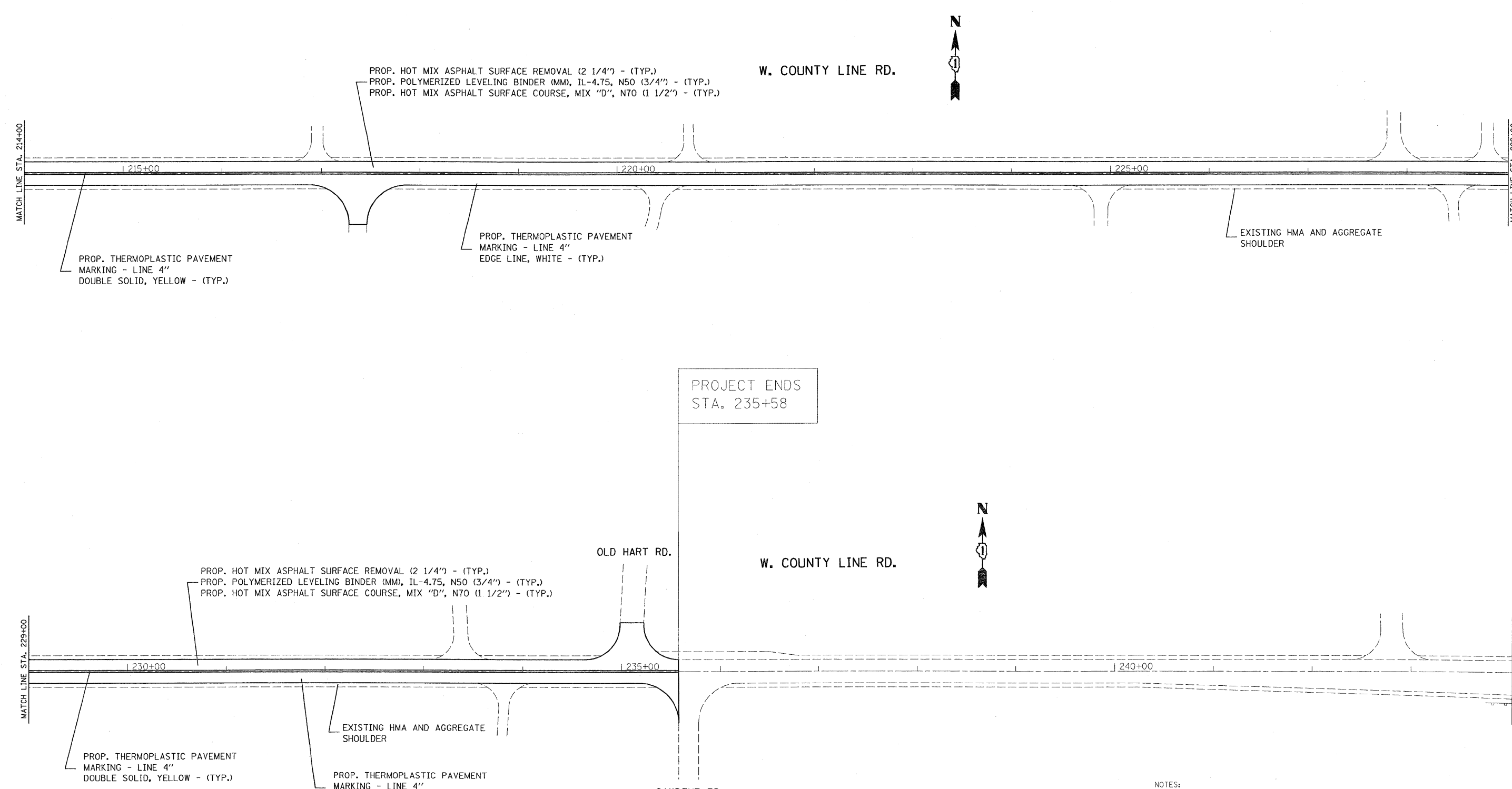


NOTES:
 LIMIT OF RESURFACING ON SIDE-STREETS THROUGH OUT THE IMPROVEMENT SHALL BE TO THE RADIUS OF RETURN OR AS DIRECTED BY THE ENGINEER.
 ALL FINAL PAVEMENT MARKINGS SHALL BE THERMOPLASTIC (OF THE EXTRUDED TYPE) AND SHOULD BE PLACED IN ACCORDANCE WITH "DISTRICT ONE TYPICAL PAVEMENT MARKINGS" DETAIL, (TC-13).
 ALL RAISED REFLECTIVE PAVEMENT MARKINGS SHALL BE PLACED IN ACCORDANCE WITH THE DISTRICT ONE "TYPICAL APPLICATIONS RAISED REFLECTIVE PAVEMENT MARKER DETAIL," (TC-11).

FILE NAME =	USER NAME = banks1	DESIGNED -	REVISED -	STATE OF ILLINOIS DEPARTMENT OF TRANSPORTATION	LAKE-COOK RD./MAIN STREET: KANE/MCHENRY/COOK COUNTY LINE EXISTING AND PROPOSED ROADWAY PLAN	F.A.U. RTE.	SECTION	COUNTY	TOTAL SHEETS	SHEET NO.	
c:\pwork\prida\banks1\0142760\017579-shr-plan.dgn	PLOT SCALE = 50.0000' / IN.	DRAWN -	REVISED -			1270	3017 RS-3	COOK	21	11	
	PLOT DATE = 6/22/2009	CHECKED -	REVISED -			CONTRACT NO. 60H59					
		DATE -	REVISED -			ILLINOIS FED. AID PROJECT					



FILE NAME =	USER NAME = banks1	DESIGNED -	REVISED -	STATE OF ILLINOIS DEPARTMENT OF TRANSPORTATION	LAKE-COOK RD./MAIN STREET: KANE/MCHENRY/COOK COUNTY LINE EXISTING AND PROPOSED ROADWAY PLAN	F.A.U. RTE.	SECTION	COUNTY	TOTAL SHEETS	SHEET NO.	
c:\pwwork\pwwork\banks1\0142760\017578\psh-t-plan.dgn		DRAWN -	REVISED -			1270	3017 RS-3	COOK	21	12	
		CHECKED -	REVISED -			CONTRACT NO. 60H59					
		DATE -	REVISED -			ILLINOIS FED. AID PROJECT					
					SCALE:	SHEET NO.	OF	SHEETS	STA.	TO STA.	

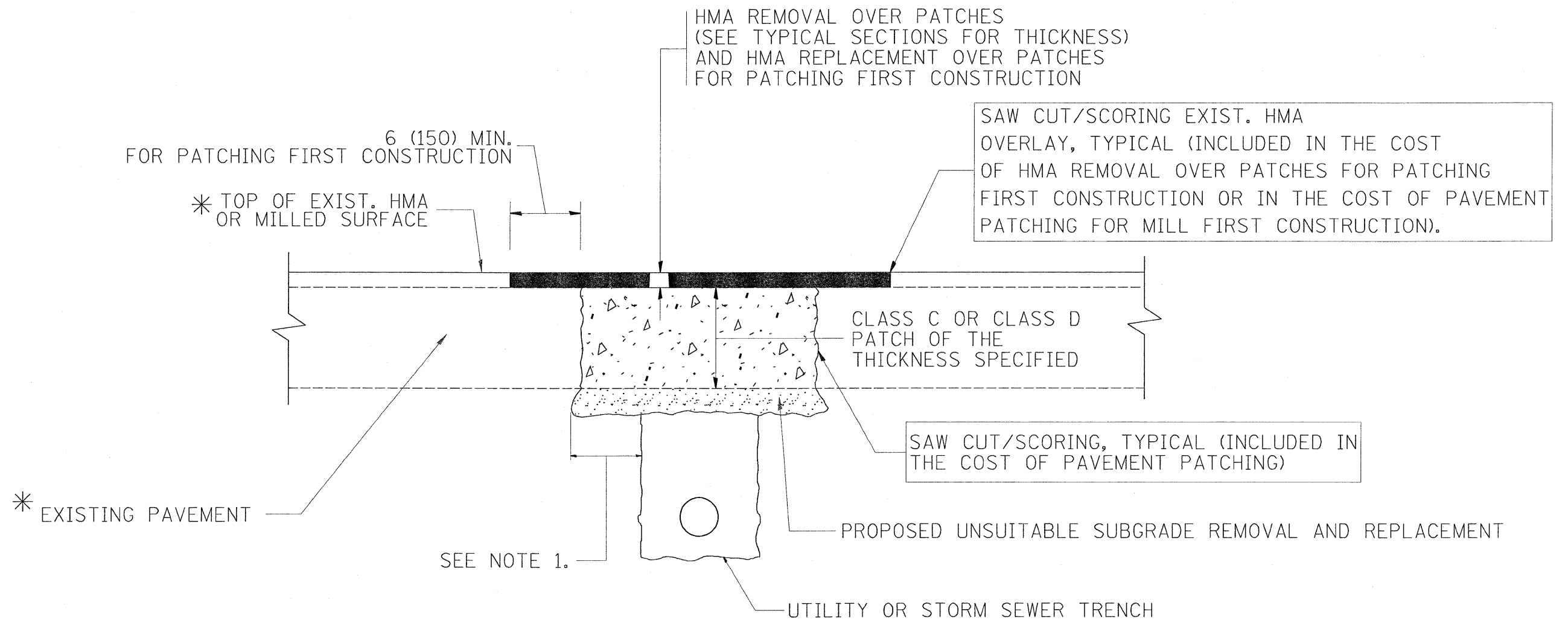


NOTES:
 LIMIT OF RESURFACING ON SIDE-STREETS THROUGH OUT THE IMPROVEMENT SHALL BE TO THE RADIUS OF RETURN OR AS DIRECTED BY THE ENGINEER.

ALL FINAL PAVEMENT MARKINGS SHALL BE THERMOPLASTIC (OF THE EXTRUDED TYPE) AND SHOULD BE PLACED IN ACCORDANCE WITH "DISTRICT ONE TYPICAL PAVEMENT MARKINGS" DETAIL, (TC-13).

ALL RAISED REFLECTIVE PAVEMENT MARKINGS SHALL BE PLACED IN ACCORDANCE WITH THE DISTRICT ONE "TYPICAL APPLICATIONS RAISED REFLECTIVE PAVEMENT MARKER DETAIL" (TC-11).

FILE NAME =	USER NAME = banks1	DESIGNED -	REVISED -	STATE OF ILLINOIS DEPARTMENT OF TRANSPORTATION	LAKE-COOK RD./MAIN STREET: KANE/MCHENRY/COOK COUNTY LINE EXISTING AND PROPOSED ROADWAY PLAN	F.A.U. RTE.	SECTION	COUNTY	TOTAL SHEETS	SHEET NO.	
cs:\pw\work\prido\t\banks1\30142768\017578\9-sh1-plan.dgn	PLOT SCALE = 50,000 ' / IN.	DRAWN -	REVISED -			1270	3017 RS-3	COOK	21	13	
PLOT DATE = 6/22/2009	DATE -	CHECKED -	REVISED -			CONTRACT NO. 60H59					
						ILLINOIS FED. AID PROJECT					



* SEE TYPICAL SECTIONS FOR THICKNESS AND MATERIALS

NOTES:

1. THE WIDTH OF THE FULL DEPTH PATCH OVER A TRENCH SHALL BE 12 (300) WIDER ON EACH SIDE OF THE TRENCH.
2. FOR METHOD OF MEASUREMENT AND BASIS OF PAYMENT, SEE RECURRING SPECIAL PROVISION "PATCHING WITH HOT-MIX ASPHALT OVERLAY REMOVAL".

SEQUENCE OF CONSTRUCTION (PATCHING FIRST)

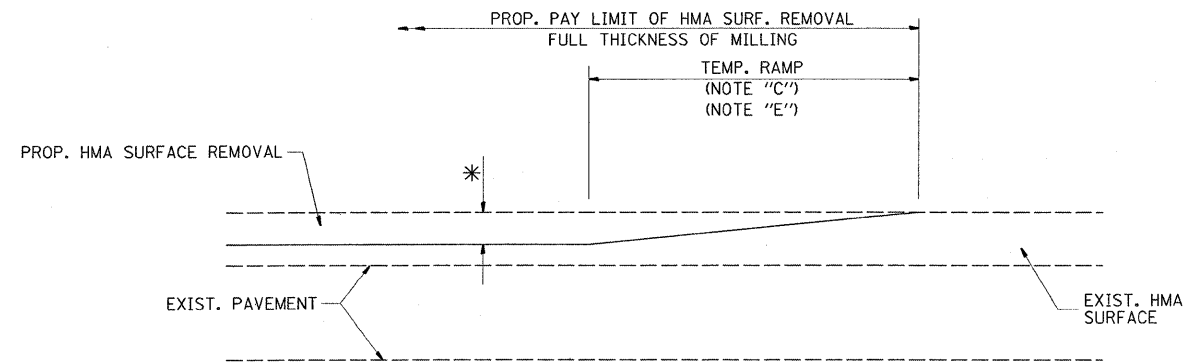
1. REMOVE THE EXISTING HMA MATERIAL OVER THE AREA TO BE PATCHED.
2. REMOVE AND REPLACE WITH CLASS C OR D PATCH.
3. REPLACE HMA MATERIAL OVER THE AREA TO BE PATCHED.

SEQUENCE OF CONSTRUCTION (MILLING FIRST)

1. MILL HMA FIRST IF THERE IS AT LEAST 4 1/2 INCHES OR MORE OF HMA MATERIAL ON TOP OF THE EXISTING PAVEMENT OR IF THE PAVEMENT IS FULL DEPTH HMA. A MINIMUM OF 2 INCHES OF HMA MATERIAL SHALL BE IN PLACE AFTER MILLING.
2. REMOVE AND REPLACE WITH FULL DEPTH CLASS D PATCHES TO TOP OF MILLED SURFACE.

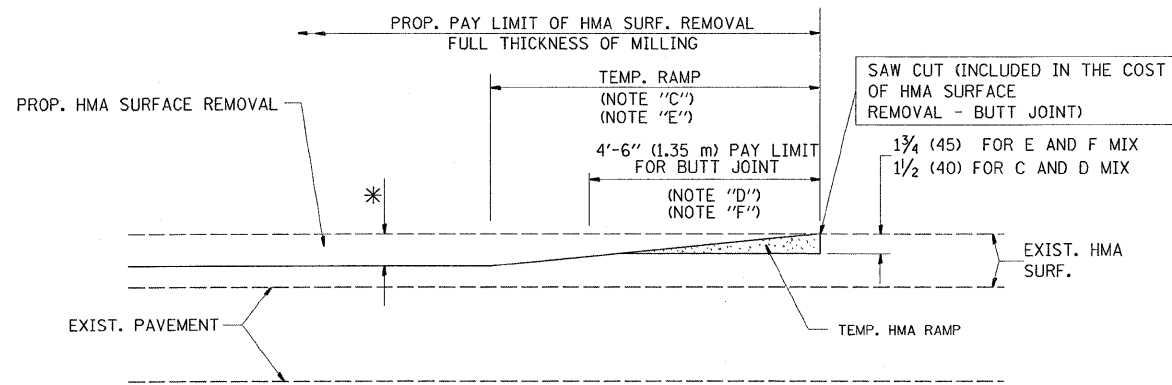
ALL DIMENSIONS ARE IN INCHES (MILLIMETERS) UNLESS OTHERWISE SHOWN.

FILE NAME =	USER NAME = banks1	DESIGNED - R. SHAH	REVISED - A. ABBAS 04-27-98	STATE OF ILLINOIS DEPARTMENT OF TRANSPORTATION	PAVEMENT PATCHING FOR HMA SURFACED PAVEMENT			F.A.U. RTE.	SECTION	COUNTY	TOTAL SHEETS	SHEET NO.
ca:\pwork\pwork\banks1\08142760\DistSt.dgn		DRAWN -	REVISED - R. BORO 01-01-07					1270	3017 RS-3	COOK	21	14
	PLOT SCALE = 50.0000' / IN.	CHECKED -	REVISED - R. BORO 09-04-07		BD400-04 (BD-22)			CONTRACT NO. 60H59				
	PLOT DATE = 6/22/2009	DATE - 10-25-94	REVISED - K. ENG 10-27-08		SCALE: NONE	SHEET NO. 1 OF 1 SHEETS	STA. TO STA.	FED. ROAD DIST. NO. 1 ILLINOIS FED. AID PROJECT				



MILLED TEMPORARY RAMP
(FOR BUTT JOINT AND HMA TAPER SEE DETAIL BELOW)

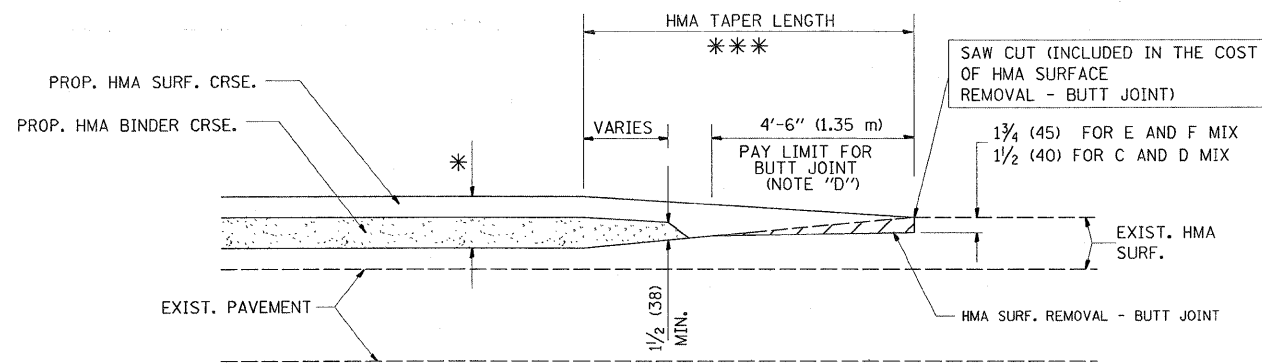
OPTION 1



HMA CONSTRUCTED TEMPORARY RAMP
(FOR BUTT JOINT AND HMA TAPER SEE DETAIL BELOW)

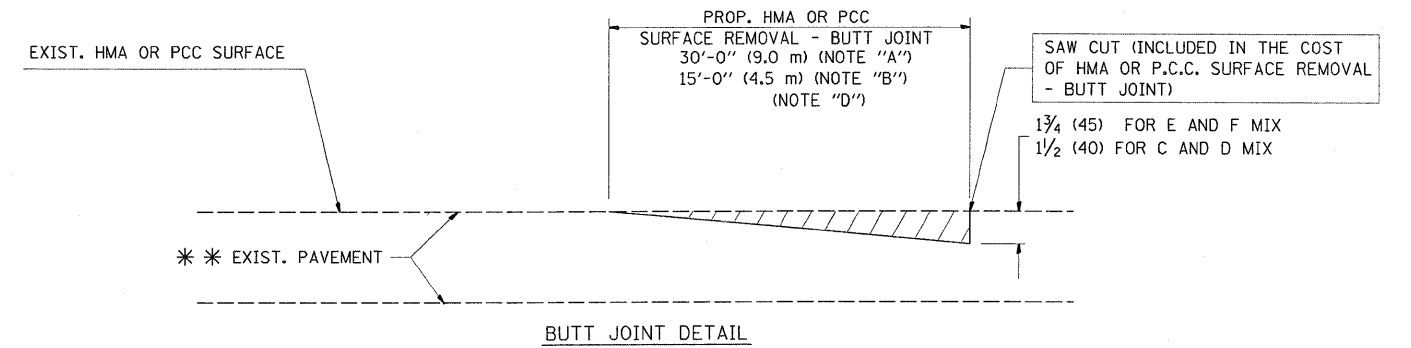
OPTION 2

TYPICAL TEMPORARY RAMP

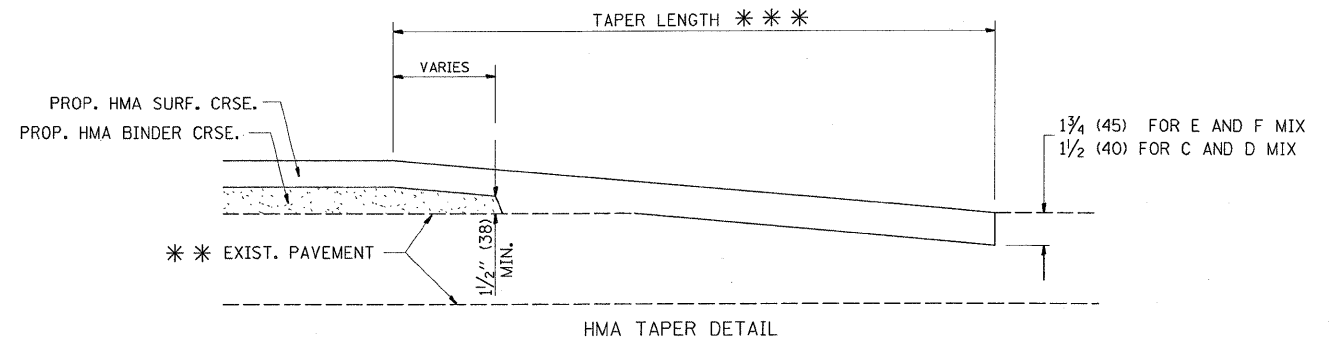


BUTT JOINT AND HMA TAPER

TYPICAL BUTT JOINT AND HMA TAPER FOR MILLING AND RESURFACING



BUTT JOINT DETAIL



HMA TAPER DETAIL

TYPICAL BUTT JOINT AND HMA TAPER FOR RESURFACING ONLY

*** PC CONCRETE, HMA OR HMA RESURFACED PAVEMENT.

NOTES

- A: MAINLINE ROADWAYS AND MAJOR SIDE ROADS.
 - B: MINOR SIDE ROADS.
 - C: THE TEMP. RAMP SHALL BE CONSTRUCTED IMMEDIATELY UPON REMOVAL OF THE EXISTING HMA SURFACE.
 - D: THE BUTT JOINT SHALL BE CONSTRUCTED IMMEDIATELY PRIOR TO PLACING THE PROPOSED HMA COURSES.
 - E: TAPER THE TEMP. RAMP AT A RATE OF 3'-0" (900 mm) PER 1 INCH (25 mm) OF MILLING THICKNESS.
 - F: INSTALLATION AND REMOVAL OF THE 4'-6" (1.35 m) TEMP. RAMP IS INCLUDED IN COST OF HMA SURFACE REMOVAL - BUTT JOINT
 - G: SEE ARTICLE 406.08 AND 406.14 OF THE STANDARD SPECIFICATIONS FOR "HMA AND/OR PCC SURFACE REMOVAL, BUTT JOINT".
- * SEE TYPICAL SECTIONS FOR MILLING THICKNESS.
- *** 20'-0" (6.1 m) PER 1 (25) RESURFACING (NOTE "A")
10'-0" (3.0 m) PER 1 (25) RESURFACING (NOTE "B")

BASIS OF PAYMENT:

THE BUTT JOINT WILL BE PAID FOR AT THE CONTRACT UNIT PRICE PER SQUARE YARD (SQUARE METER) FOR "HOT-MIX ASPHALT SURFACE REMOVAL - BUTT JOINT" OR FOR "PORTLAND CEMENT CONCRETE SURFACE REMOVAL - BUTT JOINT".

ALL DIMENSIONS ARE IN INCHES (MILLIMETERS) UNLESS OTHERWISE SHOWN.

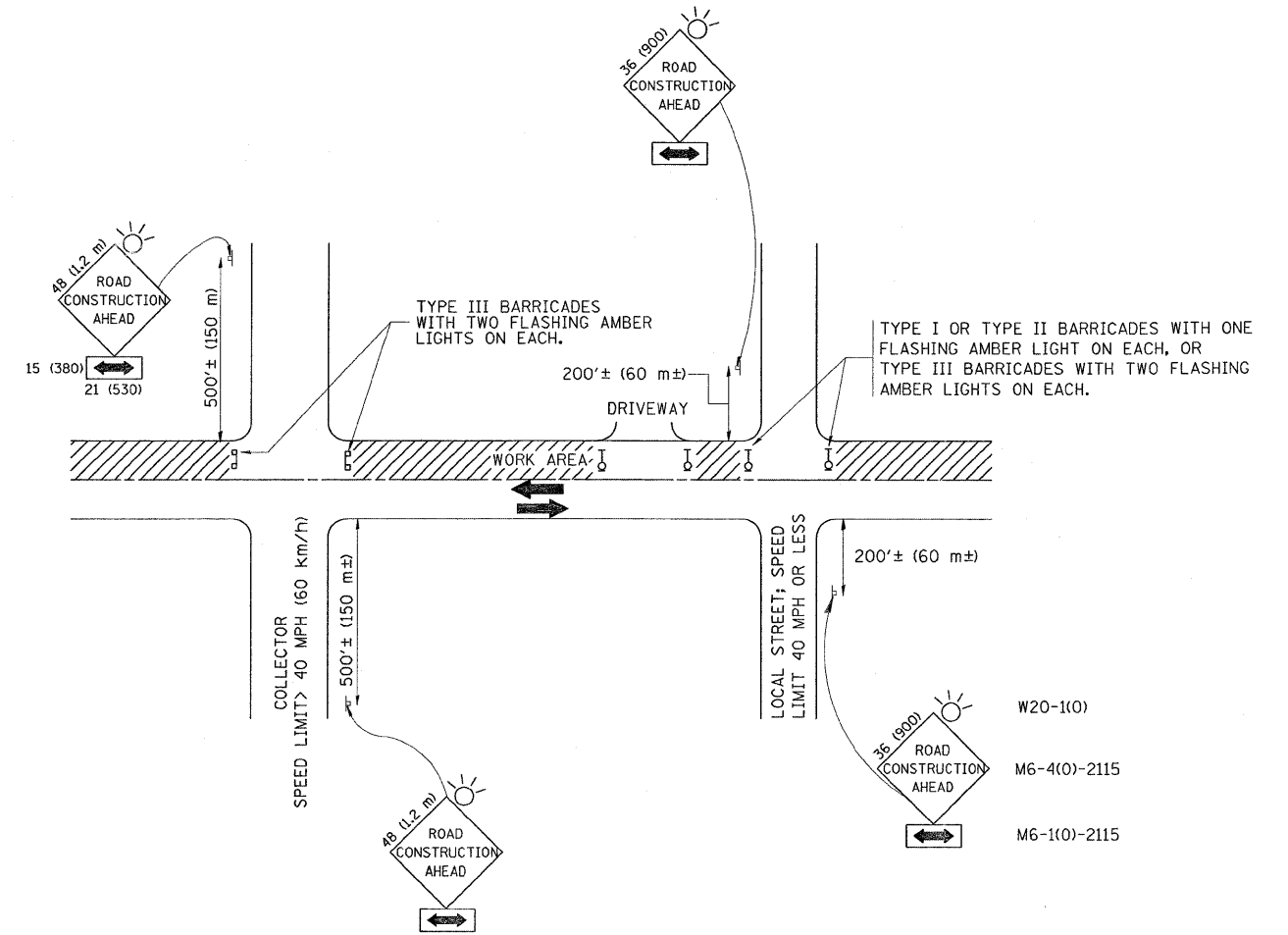
FILE NAME =	USER NAME = barks1	DESIGNED - M. DE YONG	REVISED - R. SHAH 10-25-94
cr:\pw\work\pwsdot\barks1\0142760\01st5	judgn	DRAWN -	REVISED - A. ABBAS 03-21-97
PLOT SCALE = 50.0000' / IN.	CHECKED -	REVISED - M. GOMEZ 04-06-01	
PLOT DATE = 6/22/2009	DATE - 06-13-90	REVISED - R. BORO 01-01-07	

**STATE OF ILLINOIS
DEPARTMENT OF TRANSPORTATION**

BUTT JOINT AND HMA TAPER DETAILS

SCALE: NONE SHEET NO. 1 OF 1 SHEETS STA. TO STA.

F.A.L. RTE.	SECTION	COUNTY	TOTAL SHEETS	SHEET NO.
1270	3017 RS-3	COOK	21	15
BD400-05 BD32		CONTRACT NO. 60H59		
FED. ROAD DIST. NO. 1 ILLINOIS FED. AID PROJECT				



TRAFFIC CONTROL AND PROTECTION FOR SIDE ROADS, INTERSECTIONS, AND DRIVEWAYS

NOTES:

A. FOR NO LANE RESTRICTION ON THE SIDE ROAD OR DRIVEWAYS

1. SIDE ROAD WITH A SPEED LIMIT OF 40 MPH (60 km/h) OR LESS AS SHOWN ON THE DRAWING AND AS DIRECTED BY THE ENGINEER:
 - a) ONE ROAD CONSTRUCTION AHEAD SIGN 36 x 36 (900x900) WITH A FLASHER AND FLAG MOUNTED ON IT APPROXIMATELY 200' (60 m) IN ADVANCE OF THE MAIN ROUTE.
 - b) THE CLOSED PORTION OF THE MAIN ROUTE SHALL BE PROTECTED BY BLOCKING WITH TYPE I, TYPE II OR TYPE III BARRICADES, 1/3 OF THE CROSS SECTION OF THE CLOSED PORTION.
2. SIDE ROAD WITH A SPEED LIMIT GREATER THAN 40 MPH (60 km/h) AS SHOWN ON THE DRAWING AND AS DIRECTED BY THE ENGINEER:
 - a) ONE ROAD CONSTRUCTION AHEAD SIGN 48 x 48 (1.2 m x 1.2 m) WITH A FLASHER MOUNTED ON IT APPROXIMATELY 500' (150 m) IN ADVANCE OF THE MAIN ROUTE.
 - b) THE CLOSED PORTION OF THE MAIN ROUTE SHALL BE PROTECTED BY BLOCKING WITH TYPE III BARRICADES, 1/2 OF THE CROSS SECTION OF THE CLOSED PORTION.
3. WHEN THE SIDE ROAD LIES BETWEEN THE BEGINNING OF THE MAINLINE SIGNING AND THE WORK ZONE, A SINGLE HEADED ARROW (M6-1) SHALL BE USED IN LIEU OF THE DOUBLE HEADED ARROW (M6-4).

B. FOR A LANE CLOSURE ON A SIDE ROAD OR DRIVEWAY:

- USE APPLICABLE PORTIONS OF THE TYPICAL APPLICATION OF TRAFFIC CONTROL DEVICES (STD. 701501, STD. 701606 OR THE APPROPRIATE STANDARD). THE SPACING OF SIGNS AND BARRICADES SHALL BE ADJUSTED FOR FIELD CONDITIONS AS DIRECTED BY THE ENGINEER. THE DIRECTIONAL ARROW SHALL BE COVERED OR REMOVED WHEN NO LONGER CONSISTENT WITH THE SIDE ROAD LANE CLOSURE.
- C. ADVANCE WARNING SIGNS ARE TO BE OMITTED ON DRIVEWAY UNLESS OTHERWISE NOTED.
- D. THE TRAFFIC CONTROL AND PROTECTION FOR SIDE ROADS, INTERSECTIONS, AND DRIVEWAYS SHALL BE INCIDENTAL TO THE COST OF SPECIFIED TRAFFIC CONTROL STANDARDS OR ITEMS.

All dimensions are in millimeters (Inches) unless otherwise shown.

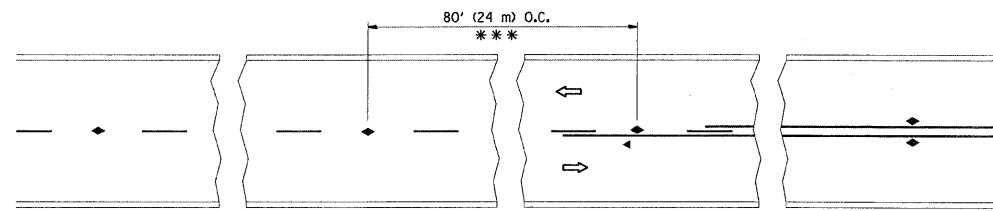
FILE NAME =	USER NAME = banks1	DESIGNED - LHA	REVISED - J. OBERLE 10-18-95
c:\pw_work\pwsdot\banks1\0142760\01stStd.dgn		DRAWN -	REVISED - A. HOUSEH 03-06-96
	PLDT SCALE = 50.0000' / IN.	CHECKED -	REVISED - A. HOUSEH 10-15-96
	PLDT DATE = 6/22/2004	DATE - 06-89	REVISED - T. RAMMACHER 01-06-00

STATE OF ILLINOIS
DEPARTMENT OF TRANSPORTATION

TRAFFIC CONTROL AND PROTECTION FOR
SIDE ROADS, INTERSECTIONS, AND DRIVEWAYS

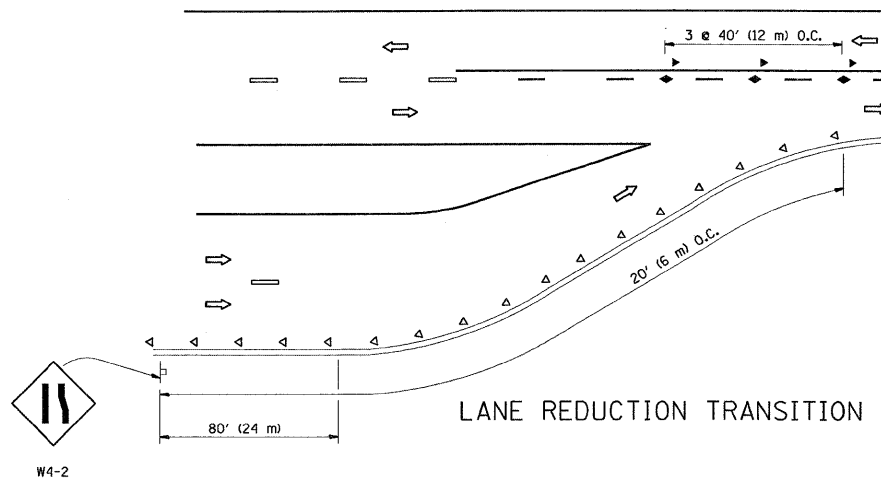
SCALE: NONE SHEET NO. 1 OF 1 SHEETS STA. TO STA.

F.A.U. RTE.	SECTION	COUNTY	TOTAL SHEETS	SHEET NO.
1270	3017 RS-3	COOK	21	16
TC-10		CONTRACT NO. 60H59		
FED. ROAD DIST. NO. 1 [ILLINOIS] FED. AID PROJECT				

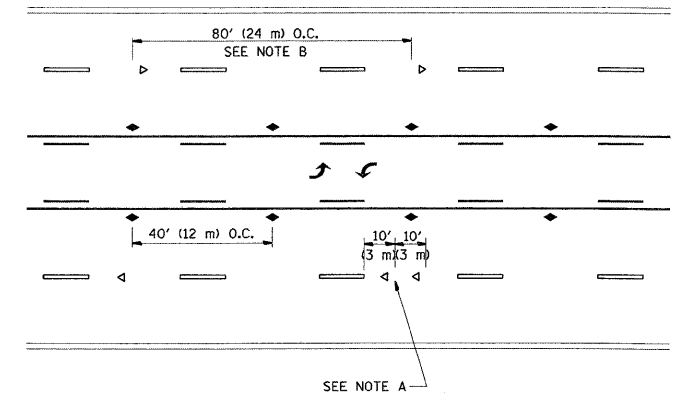


*** REDUCE TO 40' (12 m) O.C. ON CURVES WITH POSTED OR ADVISORY SPEED 45 M.P.H. (70 km/h) OR LESS.

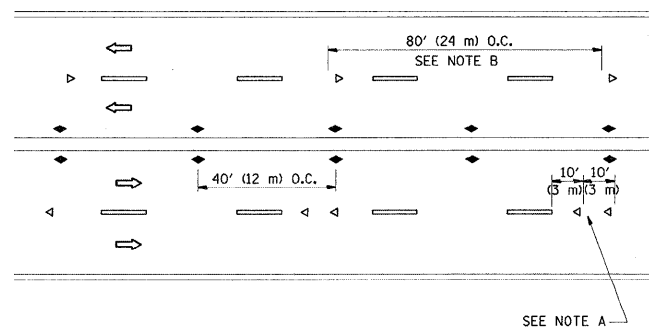
TWO-LANE/TWO-WAY



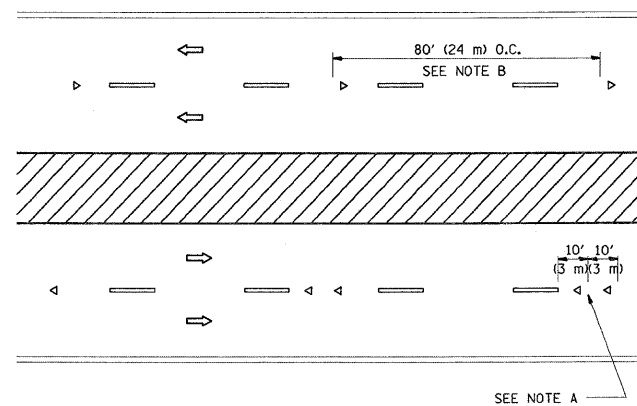
LANE REDUCTION TRANSITION



TWO-WAY LEFT TURN



MULTI-LANE/UNDIVIDED



MULTI-LANE/DIVIDED

GENERAL NOTES

1. MARKERS USED WITH DASHED LINES SHALL BE CENTERED IN THE GAP BETWEEN SEGMENTS.
2. MARKERS USED ADJACENT TO SOLID LINES SHALL BE OFFSET 2 TO 3 (50 TO 75) TOWARD TRAFFIC AS SHOWN.
3. MARKERS THROUGH TANGENTS LESS THAN 500' (150 m) IN LENGTH BETWEEN CURVES SHALL BE INSTALLED AT THE LESSER OF THE TWO CURVE SPACINGS.

SYMBOLS

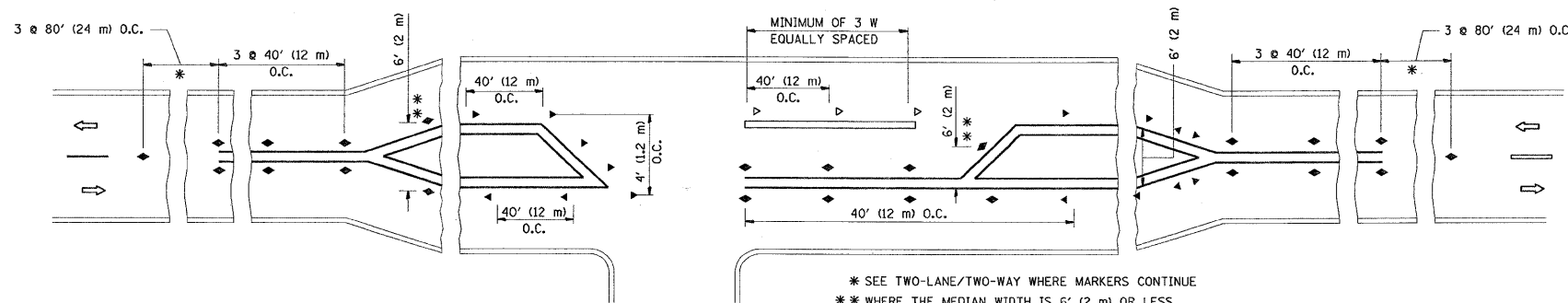
- YELLOW STRIPE
- WHITE STRIPE
- ◀ ONE-WAY AMBER MARKER
- ◁ ONE-WAY CRYSTAL MARKER (W/O)
- ◆ TWO-WAY AMBER MARKER

LANE MARKER NOTES

- B. REDUCE TO 40' (12 m) O.C. ON CURVES WHERE ADVISORY SPEEDS ARE 10 M.P.H (20 km/h) LOWER THAN POSTED SPEEDS.
- A. USE DOUBLE LANE LINE MARKERS SPACED AS SHOWN.

DESIGN NOTES

1. DOUBLE LANE LINE MARKERS SHALL BE USED UNLESS SPECIFIED OTHERWISE.
2. EXCEPT AS SHOWN ON THE LANE REDUCTION TRANSITION AND FREEWAY EXIT RAMP DETAIL, MARKERS ARE NOT TO BE SPECIFIED ON RIGHT EDGE LINES.
3. THE EXACT MARKER LIMITS, SPACING, AND COLOR SHOULD BE INCLUDED IN THE PLANS.
4. MARKERS SHOULD NOT BE USED ALONGSIDE CURBS EXCEPT FOR EXTREMELY SHORT SECTIONS OF CURBS WHERE NOT MORE THAN TWO MARKERS WOULD BE INVOLVED.



LEFT TURN

* SEE TWO-LANE/TWO-WAY WHERE MARKERS CONTINUE
 ** WHERE THE MEDIAN WIDTH IS 5' (2 m) OR LESS USE TWO-WAY MARKERS.

All dimensions are in inches (millimeters) unless otherwise shown.

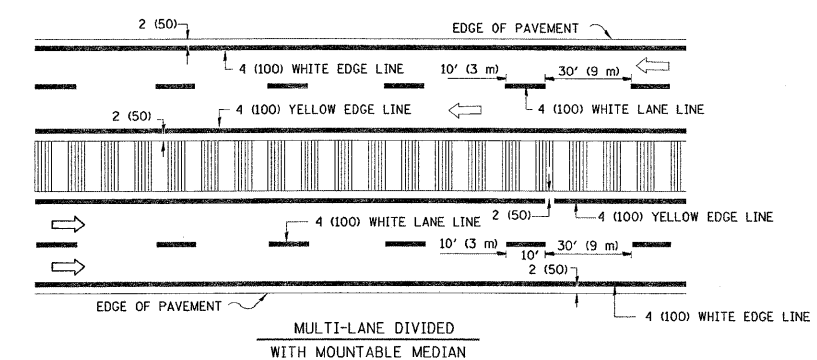
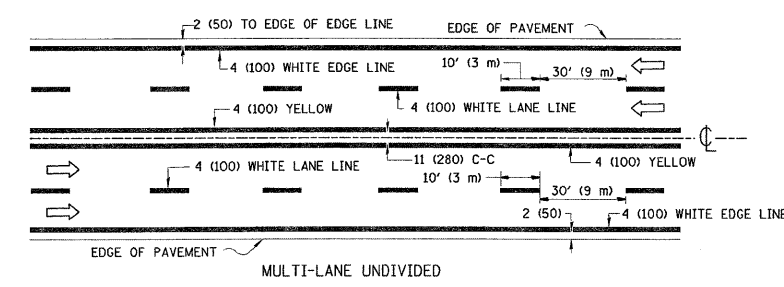
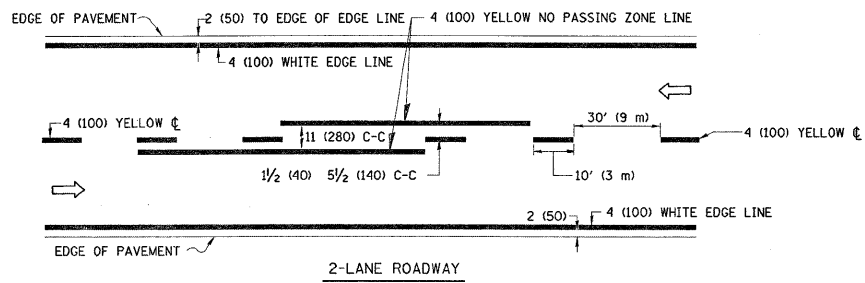
FILE NAME =	USER NAME = banks1	DESIGNED -	REVISED - T. RAMMACHER 09-19-94
cs:\pwork\pwork\dot\banks1\0142760\01st5\dgn		DRAWN -	REVISED - T. RAMMACHER 03-12-99
	PLOT SCALE = 50,000 / IN.	CHECKED -	REVISED - T. RAMMACHER 01-06-00
	PLOT DATE = 6/22/2009	DATE -	REVISED -

STATE OF ILLINOIS
 DEPARTMENT OF TRANSPORTATION

TYPICAL APPLICATIONS
 RAISED REFLECTIVE PAVEMENT MARKERS (SNOW-PLOW RESISTANT)

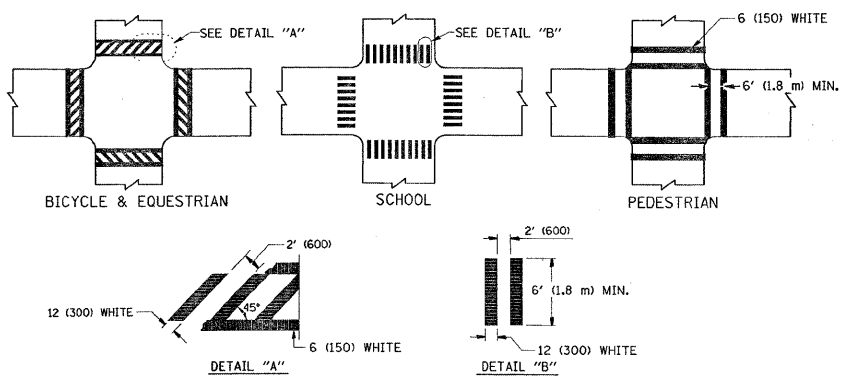
SCALE: NONE SHEET NO. 1 OF 1 SHEETS STA. TO STA.

F.A.U. RTE.	SECTION	COUNTY	TOTAL SHEETS	SHEET NO.
1270	3017 RS-3	COOK	21	17
TC-11			CONTRACT NO. 60H59	
FED. ROAD DIST. NO. 1 ILLINOIS FED. AID PROJECT				

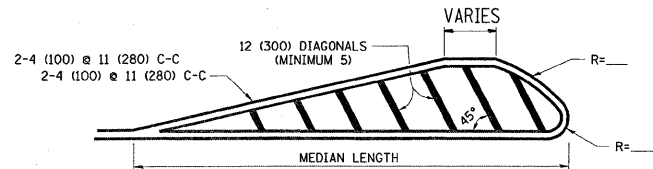
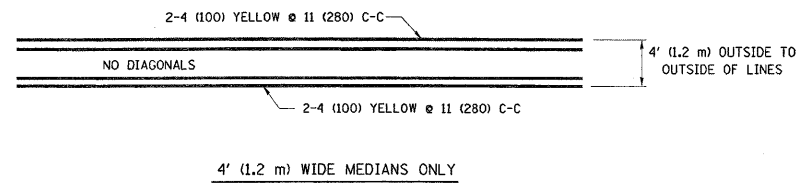


NOTE: MEDIANS WITH BARRIER CURB DO NOT REQUIRE AN EDGE LINE

TYPICAL LANE AND EDGE LINE MARKING

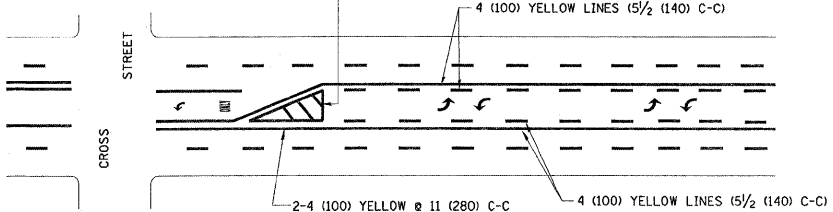


TYPICAL CROSSWALK MARKING

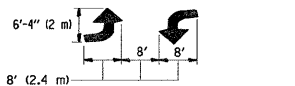


FOR MEDIAN LENGTHS WHERE DIAGONAL SPACING CANNOT BE ATTAINED, USE 5 (FIVE) EQUALLY SPACED DIAGONAL LINES.
DIAGONAL LINE SPACING: 50' (15 m) C-C (LESS THAN 30MPH (50 km/h))
75' (25 m) C-C 30MPH (50 km/h) TO 45MPH (70 km/h)
150' (45 m) C-C (MORE THAN 45MPH (70 km/h))

MEDIANS OVER 4' (1.2 m) WIDE

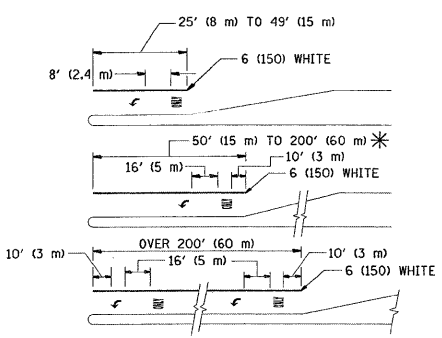


A MINIMUM OF TWO PAIRS OF TURN ARROWS SHALL BE USED, WHITE IN COLOR. ADDITIONAL PAIRS SHALL BE PLACED AT 200' (60 m) TO 300' (90 m) INTERVALS.



MEDIAN WITH TWO-WAY LEFT TURN LANE

TYPICAL PAINTED MEDIAN MARKING

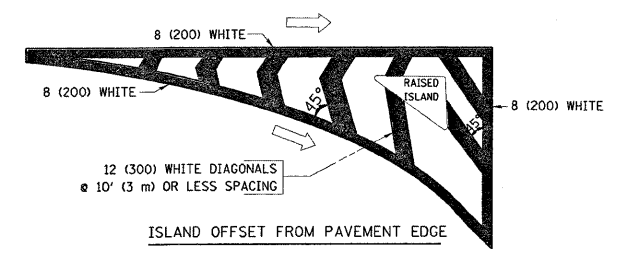


FULL SIZE LETTERS 8' (2.4 m) AND ARROWS SHALL BE USED.
AREA = 15.6 SQ. FT. (1.5 m²) ONLY AREA = 20.8 SQ. FT. (1.9 m²)

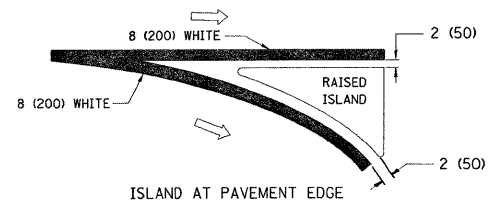
* TURN LANES IN EXCESS OF 400' (120 m) IN LENGTH MAY HAVE AN ADDITIONAL SET OF ARROW - "ONLY" INSTALLED MIDWAY BETWEEN THE OTHER TWO SETS OF ARROW - "ONLY".

TYPICAL LEFT (OR RIGHT) TURN LANE

TYPICAL TURN LANE MARKING



ISLAND OFFSET FROM PAVEMENT EDGE



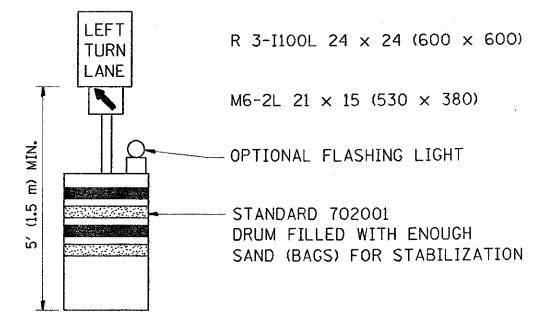
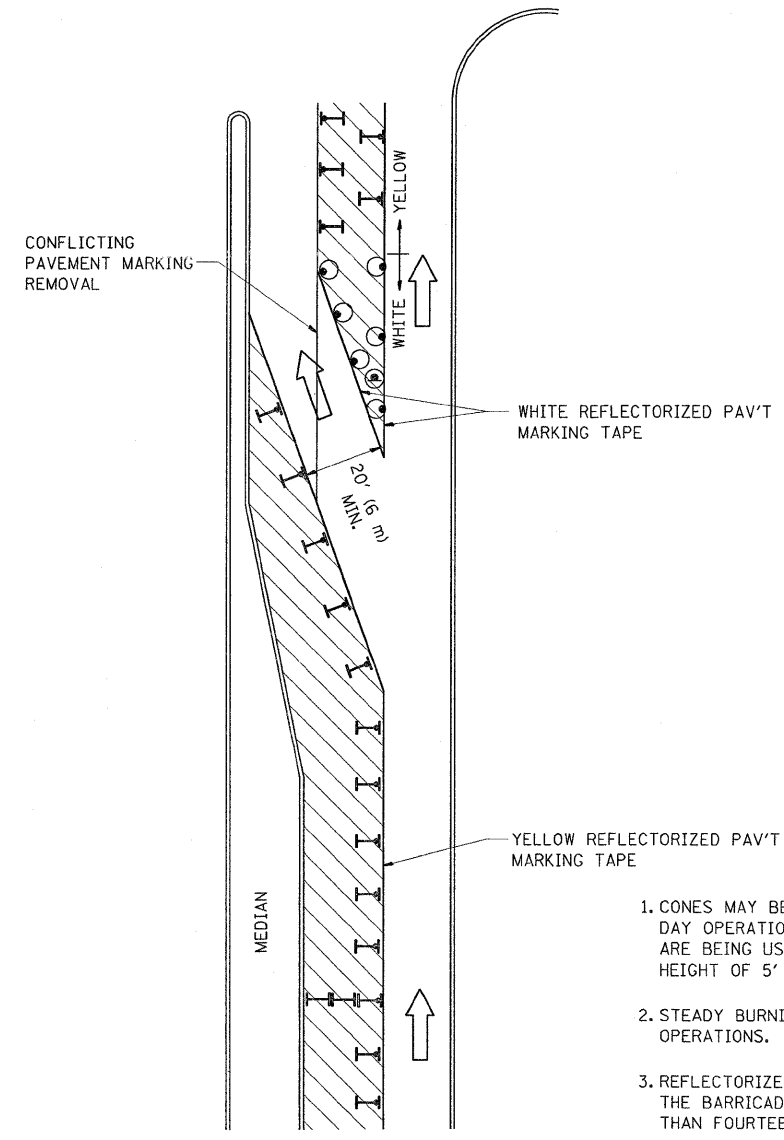
ISLAND AT PAVEMENT EDGE

TYPICAL ISLAND MARKING

TYPE OF MARKING	WIDTH OF LINE	PATTERN	COLOR	SPACING / REMARKS
CENTERLINE ON 2 LANE PAVEMENT	4 (100)	SKIP-DASH	YELLOW	10' (3 m) LINE WITH 30' (9 m) SPACE
CENTERLINE ON MULTI-LANE UNDIVIDED PAVEMENT	2 @ 4 (100)	SOLID	YELLOW	11 (280) C-C
NO PASSING ZONE LINES: FOR ONE DIRECTION FOR BOTH DIRECTIONS	4 (100) 2 @ 4 (100)	SOLID SOLID	YELLOW YELLOW	5 1/2' (140) C-C FROM SKIP-DASH CENTERLINE 11 (280) C-C OMIT SKIP-DASH CENTERLINE BETWEEN
LANE LINES	4 (100) 5 (125) ON FREEWAYS	SKIP-DASH SKIP-DASH	WHITE WHITE	10' (3 m) LINE WITH 30' (9 m) SPACE
DOTTED LINES (EXTENSIONS OF CENTER, LANE OR TURN LANE MARKINGS)	SAME AS LINE BEING EXTENDED	SKIP-DASH	SAME AS LINE BEING EXTENDED	2' (600) LINE WITH 6' (1.8 m) SPACE
EDGE LINES	4 (100)	SOLID	YELLOW-LEFT WHITE-RIGHT	OUTLINE MOUNTABLE MEDIANS IN YELLOW; EDGE LINES ARE NOT USED NEXT TO BARRIER CURB
TURN LANE MARKINGS	6 (150) LINE; FULL SIZE LETTERS & SYMBOLS (8' (2.4m))	SOLID	WHITE	SEE TYPICAL TURN LANE MARKING DETAIL
TWO WAY LEFT TURN MARKING	2 @ 4 (100) EACH DIRECTION 8' (2.4m) LEFT ARROW	SKIP-DASH AND SOLID IN PAIRS	YELLOW WHITE	10' (3 m) LINE WITH 30' (9 m) SPACE FOR SKIP-DASH; 5 1/2' (140) C-C BETWEEN SOLID LINE AND SKIP-DASH LINE SEE TYPICAL TWO-WAY LEFT TURN MARKING DETAIL
CROSSWALK LINES (PEDESTRIAN) A. DIAGONALS (BIKE & EQUESTRIAN) B. LONGITUDINAL BARS (SCHOOL)	2 @ 6 (150) 12 (300) @ 45° 12 (300) @ 90°	SOLID SOLID SOLID	WHITE WHITE WHITE	NOT LESS THAN 6' (1.8 m) APART 2' (600) APART 2' (600) APART SEE TYPICAL CROSSWALK MARKING DETAILS.
STOP LINES	24 (600)	SOLID	WHITE	PLACE 4' (1.2 m) IN ADVANCE OF AND PARALLEL TO CROSSWALK, IF PRESENT. OTHERWISE, PLACE AT DESIRED STOPPING POINT, PARALLEL TO CROSSROAD CENTERLINE, WHERE POSSIBLE.
PAINTED MEDIANS	2 @ 4 (100) WITH 12 (300) DIAGONALS @ 45° NO DIAGONALS USED FOR 4' (1.2 m) WIDE MEDIANS	SOLID	YELLOW: TWO WAY TRAFFIC WHITE: ONE WAY TRAFFIC	11 (280) C-C FOR THE DOUBLE LINE SEE TYPICAL PAINTED MEDIAN MARKING.
CORE MARKING AND CHANNELIZING LINES	8 (200) WITH 12 (300) DIAGONALS @ 45°	SOLID	WHITE	DIAGONALS: 15' (4.5 m) C-C (LESS THAN 30MPH (50 km/h)) 20' (6 m) C-C 30MPH (50 km/h) TO 45MPH (70 km/h) 30' (9 m) C-C (OVER 45MPH (70 km/h))
RAILROAD CROSSING	24 (600) TRANSVERSE LINES; "RR" IS 6' (1.8 m) LETTERS; 16 (400) LINE FOR "X"	SOLID	WHITE	SEE STATE STANDARD 780001 AREA OF: "RR"=3.6 SQ. FT. (0.33 m ²) EACH "X"=54.0 SQ. FT. (5.0 m ²)
SHOULDER DIAGONALS	12 (300) @ 45°	SOLID	WHITE - RIGHT YELLOW - LEFT	50' (15 m) C-C (LESS THAN 30MPH (50 km/h)) 75' (25 m) C-C (30 MPH (50 km/h) TO 45MPH (70 km/h)) 150' (45 m) C-C (OVER 45MPH (70 km/h))

FOR FURTHER DETAILS ON PAVEMENT MARKING REFER TO STANDARD SPECIFICATIONS FOR ROAD AND BRIDGE CONSTRUCTION AND STATE STANDARD 780001.

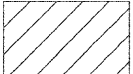
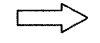
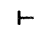


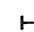
All dimensions are in inches (millimeters) unless otherwise shown.



GENERAL NOTES

1. CONES MAY BE SUBSTITUTED FOR BARRICADES OR DRUMS AT HALF THE SPACING DURING DAY OPERATIONS. CONES SHALL BE A MINIMUM OF 28 (710) IN HEIGHT. WHEN CONES ARE BEING USED, THE "LEFT TURN LANE" SIGN MAY BE SKID MOUNTED AT A MINIMUM HEIGHT OF 5' (1.5 m).
2. STEADY BURNING LIGHTS WILL NOT BE REQUIRED ON BARRICADES OR DRUMS FOR DAY OPERATIONS. ALL LIGHTS SHALL BE MONODIRECTIONAL.
3. REFLECTORIZED TEMPORARY PAVEMENT MARKING TAPE SHALL BE PLACED THROUGHOUT THE BARRICADED AREA OF EACH TURN BAY WHERE THE CLOSURE TIME IS GREATER THAN FOURTEEN DAYS.
4. THIS APPLICATION ALSO APPLIES WHEN WORK IS BEING PERFORMED IN THE RIGHT LANE(S) AND THE RIGHT TURN BAY IS TO REMAIN OPEN. UNDER THIS CONDITION, "RIGHT TURN LANE" R3-100 24 x 24 (600 x 600) AND M6-2R 21 x 15 (530 x 380) SHALL BE USED.
5. THESE CONTROLS SHALL SUPPLEMENT MAINLINE TRAFFIC CONTROL FOR LANE CLOSURES.
6. LONGITUDINAL DIMENSIONS MAY BE ADJUSTED TO FIT FIELD CONDITIONS.
7. FORM BT 725 IS REQUIRED.
8. TRAFFIC CONTROL AND PROTECTION AT TURN BAYS (TO REMAIN OPEN TO TRAFFIC) SHALL BE INCLUDED IN THE COST SPECIFIED TRAFFIC CONTROL STANDARDS OR ITEMS.

LEGEND

-  WORK AREA
-  LANE OPEN TO TRAFFIC
-  TYPE I OR II BARRICADE WITH STEADY BURN LIGHT
-  DRUM WITH STEADY BURN LIGHT
-  DRUM WITH SIGN (WITH OPTIONAL FLASHING LIGHT) SEE DETAIL
-  TYPE I OR II CHECK BARRICADE WITH FLASHING LIGHT

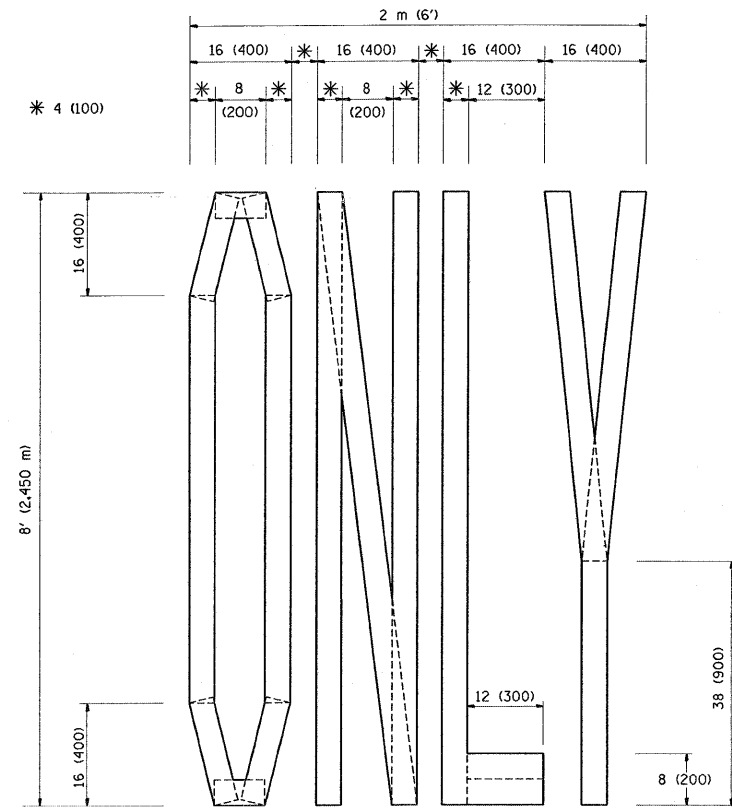
All dimensions are in inches (millimeters) unless otherwise shown.

FILE NAME =	USER NAME = banks1	DESIGNED -	REVISED - T. RAMMACHER 09-08-94
c:\pwork\pwork\banks1\0142768\DistS		DRAWN -	REVISED - A. HOUSEH 11-07-95
		CHECKED -	REVISED - A. HOUSEH 10-12-96
		DATE -	REVISED - T. RAMMACHER 01-06-00

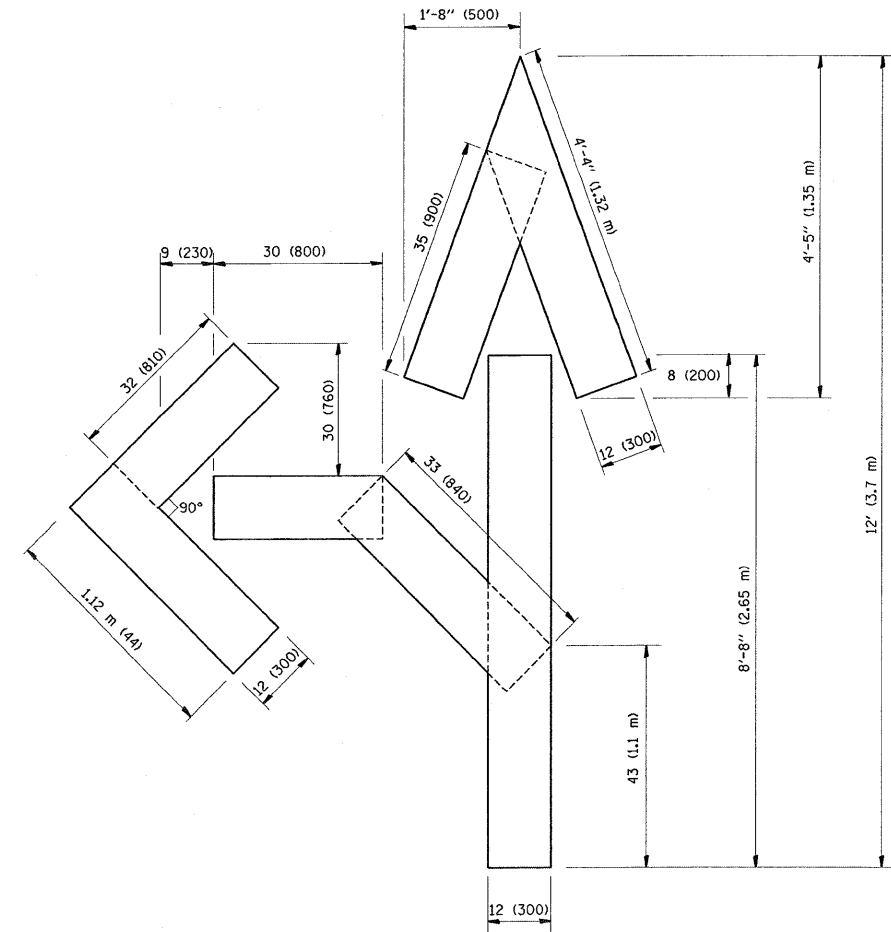
**STATE OF ILLINOIS
DEPARTMENT OF TRANSPORTATION**

TRAFFIC CONTROL AND PROTECTION AT TURN BAYS (TO REMAIN OPEN TO TRAFFIC)			
SCALE: NONE	SHEET NO. 1 OF 1 SHEETS	STA.	TO STA.

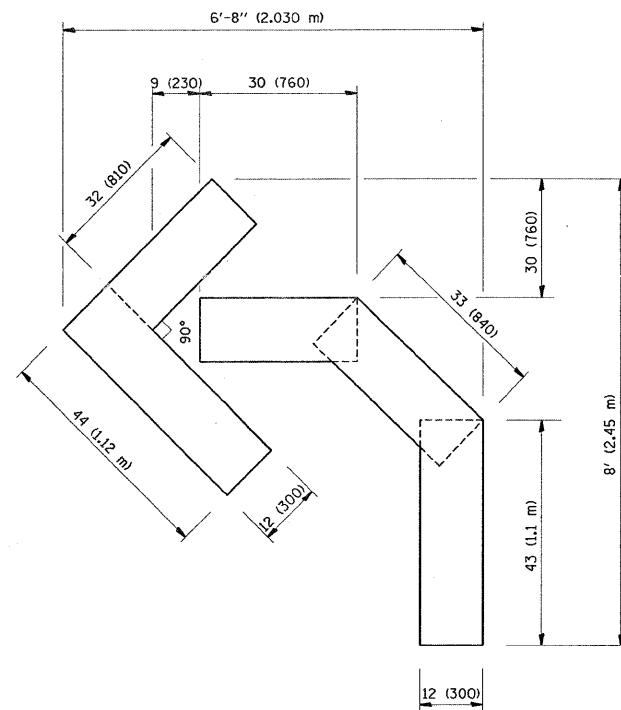
F.A.U. RTE.	SECTION	COUNTY	TOTAL SHEETS	SHEET NO.
1270	3017 RS-3	COOK	21	19
TC-14			CONTRACT NO. 60H59	
FED. ROAD DIST. NO. 1 ILLINOIS FED. AID PROJECT				



QUANTITY
 4 (100) LINE = 64.1 ft. (19.7 m)
 21.1 sq. ft. (1.97 sq. m)



QUANTITY
 4 (100) LINE = 82.5 ft. (25.3 m)
 27.5 sq. ft. (2.53 sq. m)



QUANTITY
 4 (100) LINE = 45.5 ft. (13.9 m)
 15.2 sq. ft. (1.39 sq. m)

All dimensions are in inches (millimeters) unless otherwise shown.

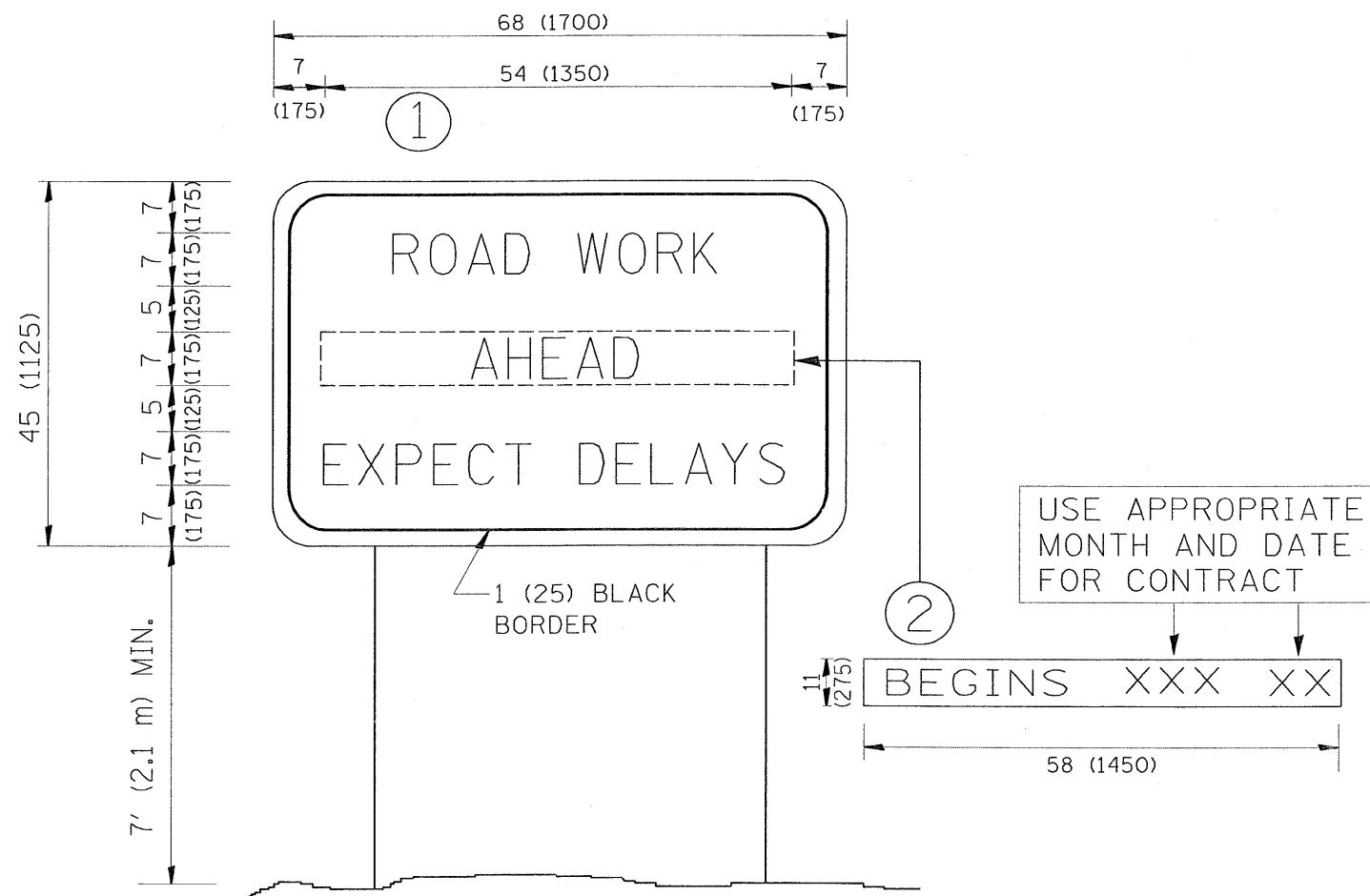
FILE NAME =	USER NAME = banks1	DESIGNED -	REVISED -T. RAMMACHER 06-05-96
ct:\pwork\pwork\banks1\0142760\Dist5.dgn		DRAWN -	REVISED -T. RAMMACHER 11-04-97
PLOT SCALE = 50.0000' / IN.		CHECKED -	REVISED -T. RAMMACHER 03-02-98
PLOT DATE = 6/22/2009		DATE - 09-18-94	REVISED -E. GOMEZ 08-28-00

STATE OF ILLINOIS
 DEPARTMENT OF TRANSPORTATION

PAVEMENT MARKING LETTERS AND SYMBOLS
 FOR TRAFFIC STAGING

SCALE: NONE SHEET NO. 1 OF 1 SHEETS STA. TO STA.

F.A.U. RTE.	SECTION	COUNTY	TOTAL SHEETS	SHEET NO.
1270	3017 RS-3	COOK	21	20
TC-16		CONTRACT NO. 60H59		
FED. ROAD DIST. NO. 1 ILLINOIS FED. AID PROJECT				



NOTES:

1. USE BLACK LETTERING ON ORANGE BACKGROUND.
2. ERECT SIGNS IN ADVANCE OF THE LOCATION FOR THE "ROAD CONSTRUCTION AHEAD" SIGN AT LOCATIONS AS DIRECTED BY THE ENGINEER.
3. ERECT SIGN ① WITH INSTALLED PANEL ② ONE WEEK PRIOR TO THE START OF CONSTRUCTION.
4. REMOVE PANEL ② SOON AFTER THE START OF CONSTRUCTION.
5. SEE SPECIAL PROVISION FOR "TEMPORARY INFORMATION SIGNING" FOR ADDITIONAL INFORMATION.
6. ONE SIGN ASSEMBLY EQUALS 25.70 SQ. FT. (2.3 SQ. M.)
7. SHALL BE PAID FOR AS TEMPORARY INFORMATION SIGNING.

ALL DIMENSIONS ARE IN INCHES (MILLIMETERS) UNLESS OTHERWISE SHOWN.

FILE NAME =	USER NAME = banks1	DESIGNED -	REVISED - R. MIRS 09-15-97
c:\pwork\pwsdot\banks1\0142760\DistS	ldgn	DRAWN -	REVISED - R. MIRS 12-11-97
PLOT SCALE = 50.0000 / / IN.	CHECKED -	REVISED - T. RAMMACHER 02-02-99	
PLOT DATE = 6/22/2009	DATE -	REVISED - C. JUCIUS 01-31-07	

**STATE OF ILLINOIS
DEPARTMENT OF TRANSPORTATION**

**ARTERIAL ROAD
INFORMATION SIGN**

SCALE: NONE SHEET NO. 1 OF 1 SHEETS STA. TO STA.

F.A. U. RTE.	SECTION	COUNTY	TOTAL SHEETS	SHEET NO.
1270	3017 RS-3	COOK	21	21
TC-22			CONTRACT NO. 60H59	
FED. ROAD DIST. NO. 1 ILLINOIS FED. AID PROJECT				