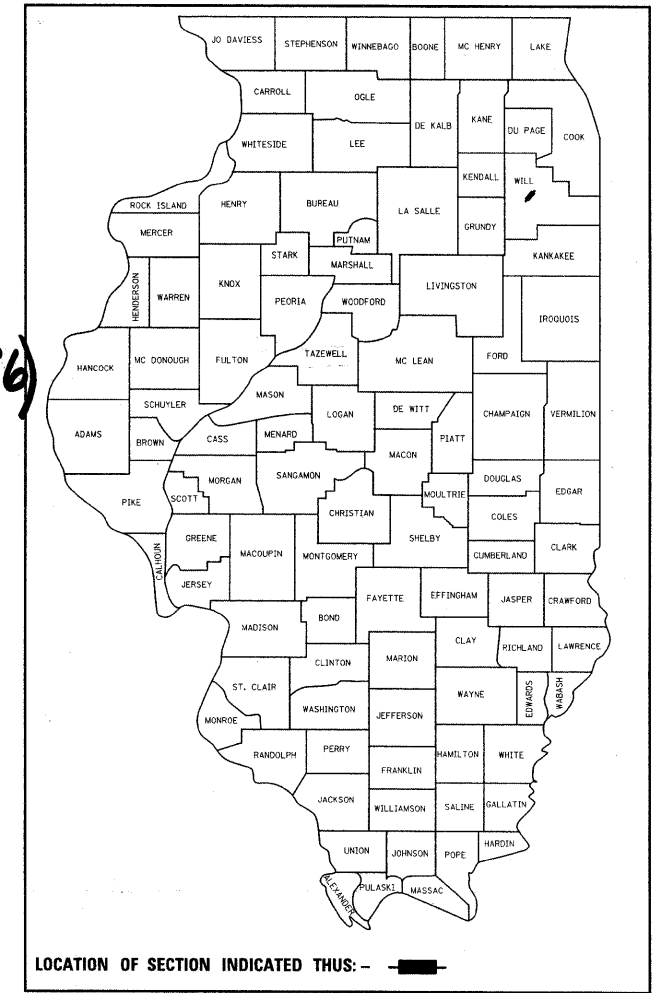


| | | | | |
|-----------------------|------------|--------------------|--------------|-----------|
| F.A. RTE. | SECTION | COUNTY | TOTAL SHEETS | SHEET NO. |
| * | 1-D-1-RS-3 | WILL | 34 | 1 |
| FED. ROAD DIST. NO. 1 | ILLINOIS | CONTRACT NO. 60H61 | | |

* FAP 856/FAU 0318

D-91-759-09



STATE OF ILLINOIS
DEPARTMENT OF TRANSPORTATION
DIVISION OF HIGHWAYS

**PROPOSED
HIGHWAY PLANS**

**FAP 856/FAU 0318 (CHANNAHON RD/RAILROAD ST-US6)
TERRY DR TO US 52 (McDONOUGH ST)**

**SECTION:1-D-1-RS-3
RESURFACING (3P)**

PROJECT NO.:ESP-000S(685)

**WILL COUNTY
C-91-759-09**

FOR INDEX OF SHEETS, SEE SHEET NO. 2

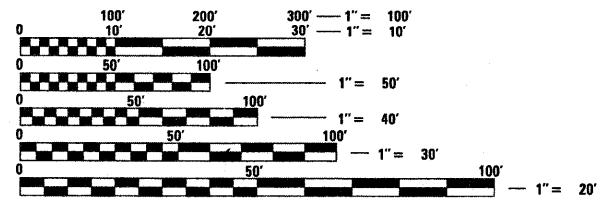
PROJECT IS LOCATED IN THE CITY
OF JOLIET AND THE VILLAGES OF
CHANNAHON AND ROCKDALE

TRAFFIC DATA

TERRY DRIVE TO IL 7 (LARKIN AVE)
2007 ADT = 13,000
POSTED SPEED LIMIT = 45 MPH - 55 MPH

LARKIN AVE. TO BRANDON RD
2007 ADT = 8,100
POSTED SPEED LIMIT = 45 MPH

BRANDON ST. TO US 52 (McDONOUGH ST)
2007 ADT = 2,250
POSTED SPEED LIMIT = 35 MPH - 45 MPH

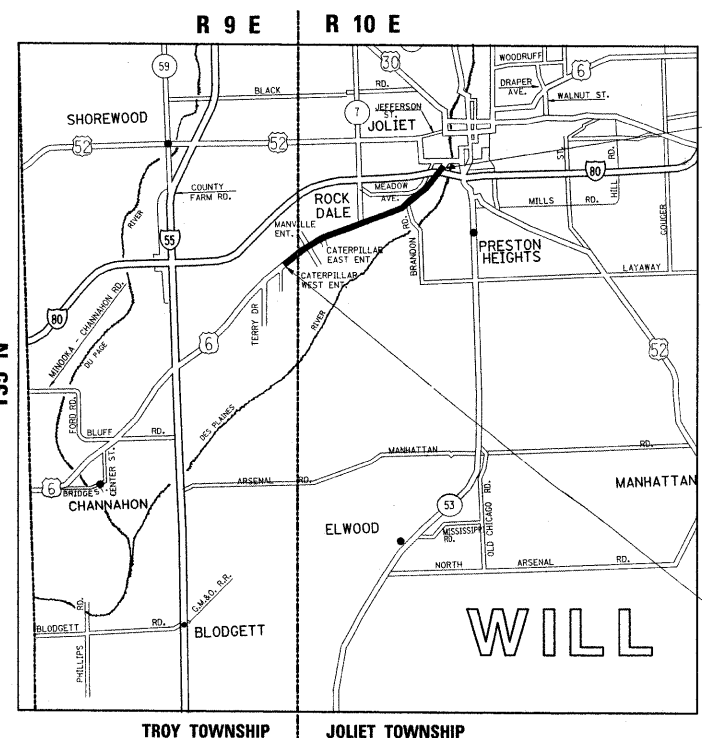


FULL SIZE PLANS HAVE BEEN PREPARED USING STANDARD
ENGINEERING SCALES. REDUCED SIZED PLANS WILL NOT
CONFORM TO STANDARD SCALES. IN MAKING MEASUREMENTS
ON REDUCED PLANS, THE ABOVE SCALES MAY BE USED.

J.U.L.I.E.
JOINT UTILITY LOCATION INFORMATION FOR EXCAVATION
1-800-892-0123 (OR 811)

PROJECT ENGINEER: JENPAI P. CHANG (847) 705 - 4432
PROJECT MANAGER: KEN ENG

CONTRACT NO. 60H61



PROJECT ENDS
STATION 273+54

OMISSION @ BRANDON RD
STA. 213+18 TO STA. 218+80

OMISSION @ LARKIN AVE
STA. 148+28 TO STA. 159+95

OMISSION @ RR CROSSING
STA. 112+43 TO STA. 112+53

PROJECT BEGINS
STATION 97+60

GROSS LENGTH OF PROJECT = 17,594 FEET = 3.33 MILES
NET LENGTH OF PROJECT = 15,855 FEET = 3.00 MILES

STATE OF ILLINOIS
DEPARTMENT OF TRANSPORTATION
DIVISION OF HIGHWAYS

SUBMITTED June 24 2009
Dino O'Keefe
DEPUTY DIRECTOR OF HIGHWAYS, REGION ENGINEER

August 14, 2009
Charles G. Ingersoll
ENGINEER OF DESIGN AND ENVIRONMENT

August 14, 2009
Christine M. Reed
DIRECTOR OF HIGHWAYS, CHIEF ENGINEER

PRINTED BY THE AUTHORITY
OF THE STATE OF ILLINOIS