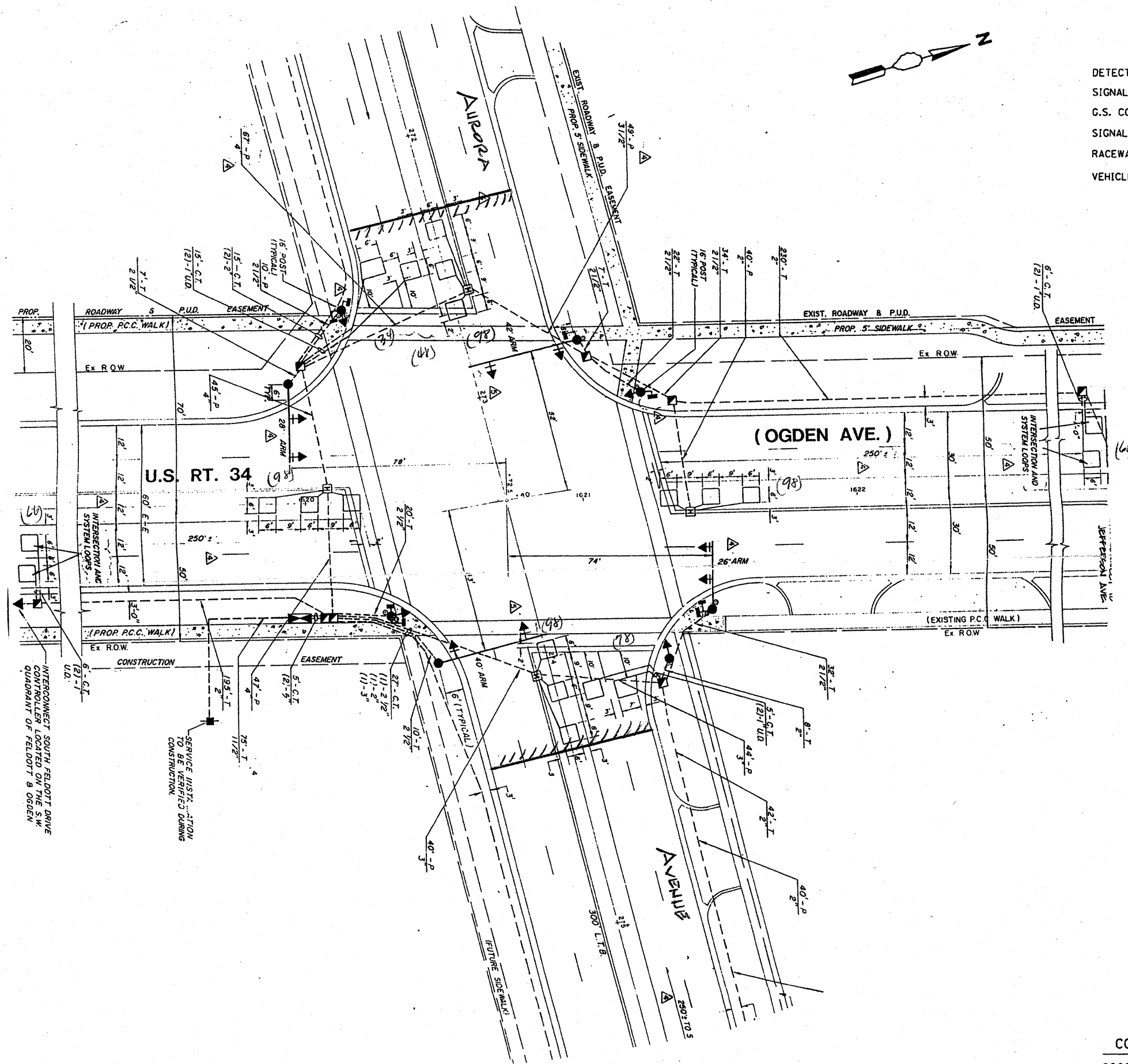


TRAFFIC SIGNAL LEGEND

	PROPOSED	EXISTING
DETECTOR LOOP		
SIGNAL HEAD		
G.S. CONDUIT IN TRENCH OR PUSHED		
SIGNAL HEAD WITH BACKPLATE		
RACEWAY FOR MAGNETIC DETECTOR, TYPE I OR II		
VEHICLE DETECTOR, NON-COMPENSATED MAGNETIC TYPE		



THIS PLAN IS FOR THE SOLE PURPOSE OF DETECTOR LOOP REPLACEMENTS ONLY

REPLACE ALL DETECTOR LOOPS AS SHOWN (WITHIN THE RESURFACING LIMITS)

CODE	QUANTITY	UNIT	ITEM
86600600	684	FOOT	DETECTOR LOOP, REPLACEMENT

FILE NAME =
 USER NAME = kanthaphixaybc
 DESIGNED - BCK
 DRAWN - BCK
 PLOT SCALE = 3/4" = 1'-0"
 PLOT DATE = 4/3/2009

REVISIONS
 REVISION NO. | DATE | BY | DESCRIPTION
 1 | | |
 2 | | |
 3 | | |

**STATE OF ILLINOIS
 DEPARTMENT OF TRANSPORTATION**

**DISTRICT ONE - DETECTOR LOOP REPLACEMENT
 U.S. ROUTE 34 @ AURORA AVENUE**

F.A.P. RTE.	SECTION	COUNTY	TOTAL SHEETS	SHEET NO.
311	652 (X+X-1) RS-S	DU PAGE	27	12

SCALE: NONE SHEET NO. OF SHEETS STA. TO STA. CONTRACT NO. FED. ROAD DIST. NO. ILLINOIS FED. AID PROJECT 607661