

STATE OF ILLINOIS
DEPARTMENT OF TRANSPORTATION
DIVISION OF HIGHWAYS

**PROPOSED
HIGHWAY PLANS**

FAP ROUTE 335: IL RTE. 176 & IL RTE. 60 / 83
IL. RTE. 176 (WEST OF THORNGATE DRIVE TO IL RTE. 60 / 83)
IL. RTE. 60 / 83 (IL RTE. 176 TO MIDLOTHIAN ROAD)

SECTION: 144 X-RS-5
PROJECT: *ESP-0335(013)*
RESURFACING (3P)
LAKE COUNTY

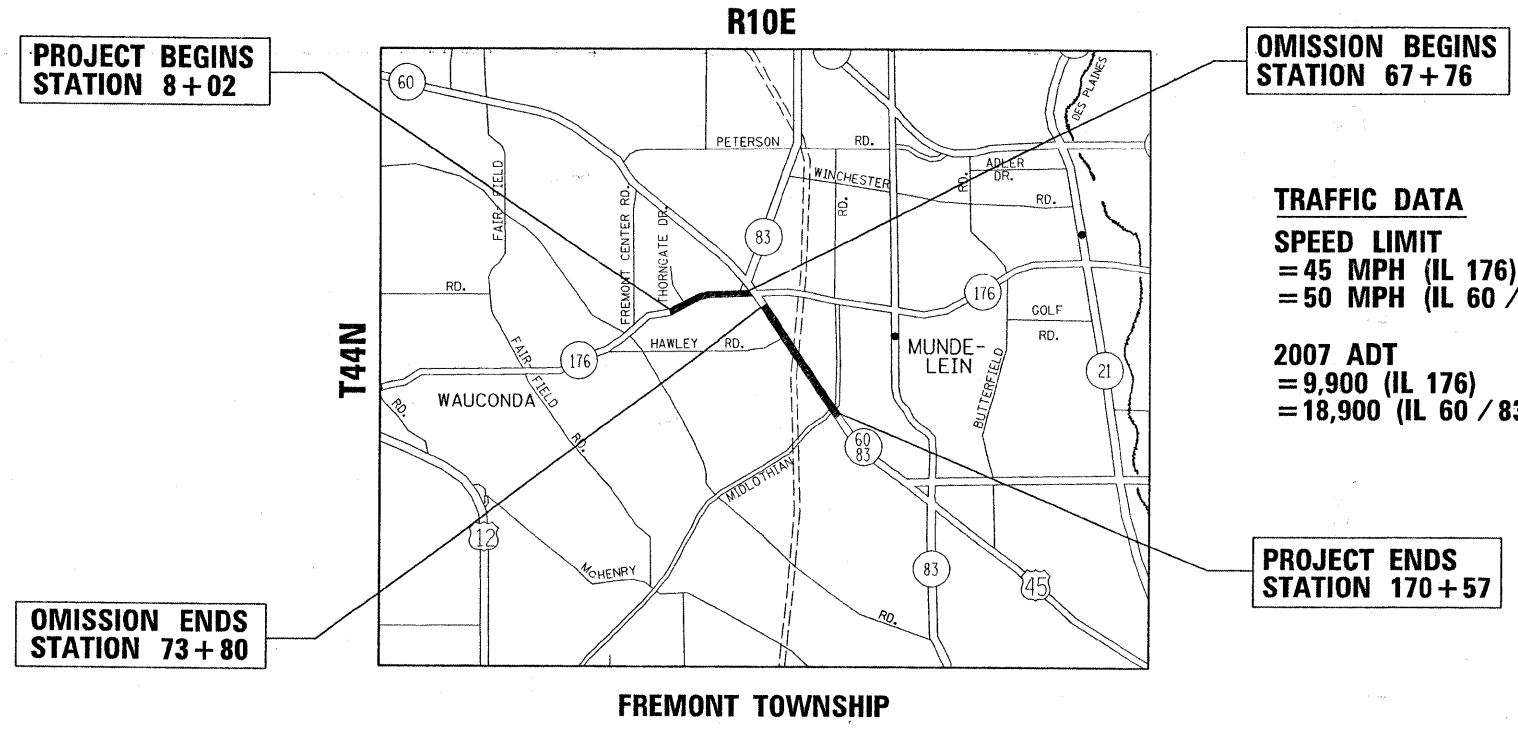
C-91-765-09

FOR INDEX OF SHEETS, SEE SHEET NO. 2

PROJECT IS LOCATED IN THE
VILLAGE OF MUNDELEIN.

F.A.P. RTE.	SECTION	COUNTY	TOTAL SHEETS	SHEET NO.
335	144 X-RS-5	LAKE	27	1
		ILLINOIS	CONTRACT NO. 60H67	

D-91-765-09



PROJECT BEGINS
STATION 8+02

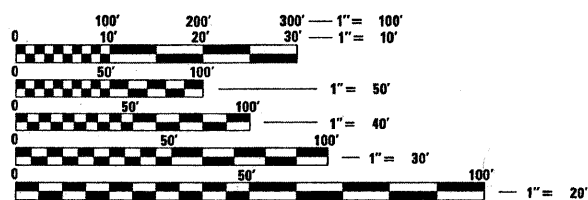
OMISSION BEGINS
STATION 67+76

TRAFFIC DATA
SPEED LIMIT
= 45 MPH (IL 176)
= 50 MPH (IL 60 / 83)

2007 ADT
= 9,900 (IL 176)
= 18,900 (IL 60 / 83)

OMISSION ENDS
STATION 73+80

PROJECT ENDS
STATION 170+57



FULL SIZE PLANS HAVE BEEN PREPARED USING STANDARD ENGINEERING SCALES. REDUCED SIZED PLANS WILL NOT CONFORM TO STANDARD SCALES. IN MAKING MEASUREMENTS ON REDUCED PLANS, THE ABOVE SCALES MAY BE USED.

J.U.L.I.E.
JOINT UTILITY LOCATION INFORMATION FOR EXCAVATION
1-800-892-0123
OR 811

PROJECT ENGINEER: DAN WILGREEN (847) 705-4240
PROJECT MANAGER: KEN ENG

GROSS LENGTH OF IMPROVEMENT = 16,255 LF = 3.08 MILES
NET LENGTH OF IMPROVEMENT = 15,651 LF = 2.96 MILES

CONTRACT NO. 60H67

STATE OF ILLINOIS
DEPARTMENT OF TRANSPORTATION
DIVISION OF HIGHWAYS

SUBMITTED June 22, 2009

Dan Wilgreen
DEPUTY DIRECTOR OF HIGHWAYS, REGION ENGINEER

August 14, 2009
Charles G. Ingersoll
ENGINEER OF DESIGN AND ENVIRONMENT

August 14, 2009
Christine M. Reed
DIRECTOR OF HIGHWAYS, CHIEF ENGINEER

**PRINTED BY THE AUTHORITY
OF THE STATE OF ILLINOIS**