

| | | | | |
|---------------------|------------------|--------------------|--------------|-----------|
| F.A.P. RTE. | SECTION | COUNTY | TOTAL SHEETS | SHEET NO. |
| 338 | (111 & 112) RS-8 | DUPAGE | 42 | 1 |
| FED. ROAD DIST. NO. | ILLINOIS | CONTRACT NO. 60H70 | | |

STATE OF ILLINOIS
DEPARTMENT OF TRANSPORTATION
DIVISION OF HIGHWAYS

PROPOSED
HIGHWAY PLANS

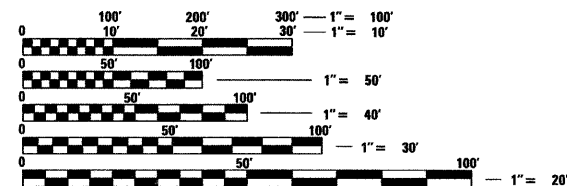
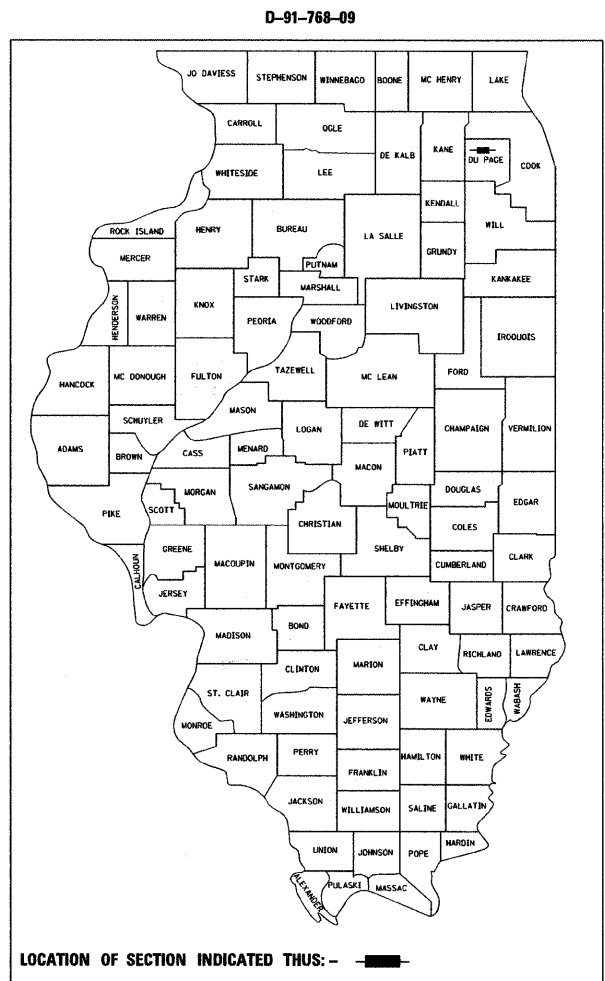
FAP ROUTE 338 (IL 59)
SECTION: (111 & 112) RS-8
BATAVIA ROAD TO NORTH AVE. (IL 64)
RESURFACING
PROJECT: ESP-0338(038)
DUPAGE COUNTY
C-91-768-09

FOR INDEX OF SHEETS, SEE SHEET NO. 2

TRAFFIC DATA

EXISTING ADT = 30,700 TO 42,200 (2007)
SPEED LIMIT = 30 TO 55 MPH

THE PROJECT IS LOCATED WITHIN THE CITY OF WEST CHICAGO AND THE CITY OF WARRENVILLE

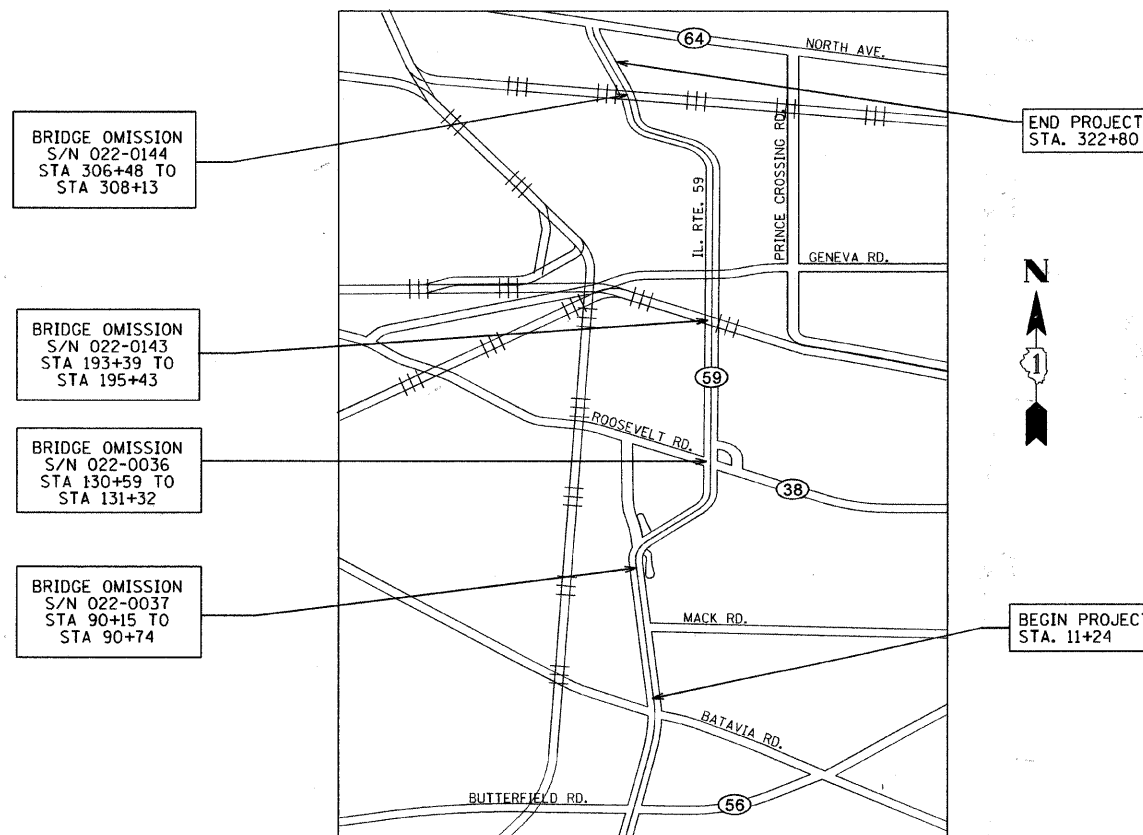


FULL SIZE PLANS HAVE BEEN PREPARED USING STANDARD ENGINEERING SCALES. REDUCED SIZED PLANS WILL NOT CONFORM TO STANDARD SCALES. IN MAKING MEASUREMENTS ON REDUCED PLANS, THE ABOVE SCALES MAY BE USED.

J.U.L.I.E.
JOINT UTILITY LOCATION INFORMATION
FOR EXCAVATION
1-800-892-0123 OR 811

PROJECT ENGINEER: PETER JOHNSTON (GRAEF) 773-399-0112
PROJECT MANAGER: KEN ENG (IDOT) 847-705-4247

CONTRACT NO. 60H70



GROSS LENGTH OF IMPROVEMENT: 31,156 FT (5.901 MILES)
NET LENGTH OF IMPROVEMENT: 30,652 FT (5.805 MILES)



Peter M. Johnston
PETER M. JOHNSTON
062-047647
REGISTERED PROFESSIONAL ENGINEER OF ILLINOIS
Expires 11-30-09

BEGIN PROJECT STA. 11+24

END PROJECT STA. 322+80

STATE OF ILLINOIS
DEPARTMENT OF TRANSPORTATION
DIVISION OF HIGHWAYS

SUBMITTED June 24 20 09

Dino C. Karp
DEPUTY DIRECTOR OF HIGHWAYS, REGION ENGINEER

August 14, 20 09
Charles G. Ingersoll
ENGINEER OF DESIGN AND ENVIRONMENT

August 14 20 09
Christine M. Reed
DIRECTOR OF HIGHWAYS, CHIEF ENGINEER

GRAEF
8501 W. Higgins Road; Suite 280
Chicago, Illinois 60631
(773) 399-0112

PRINTED BY THE AUTHORITY OF THE STATE OF ILLINOIS