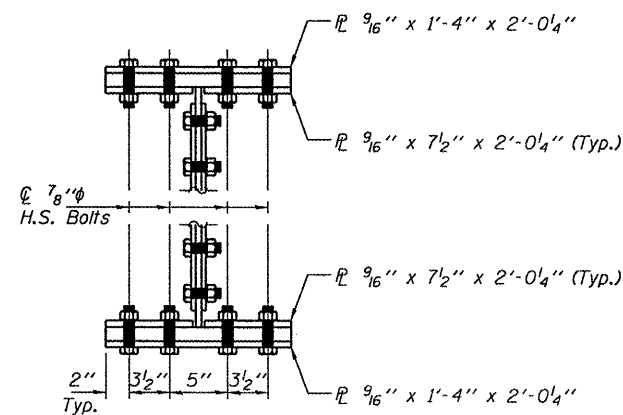
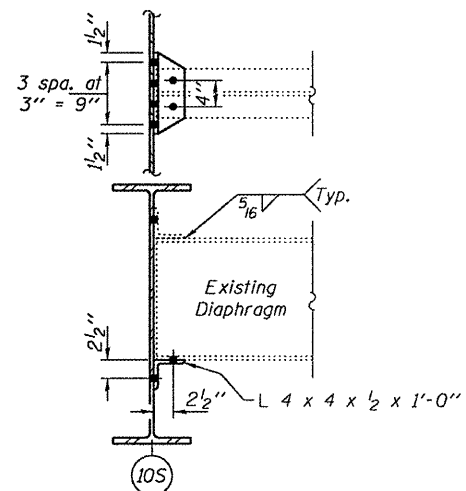
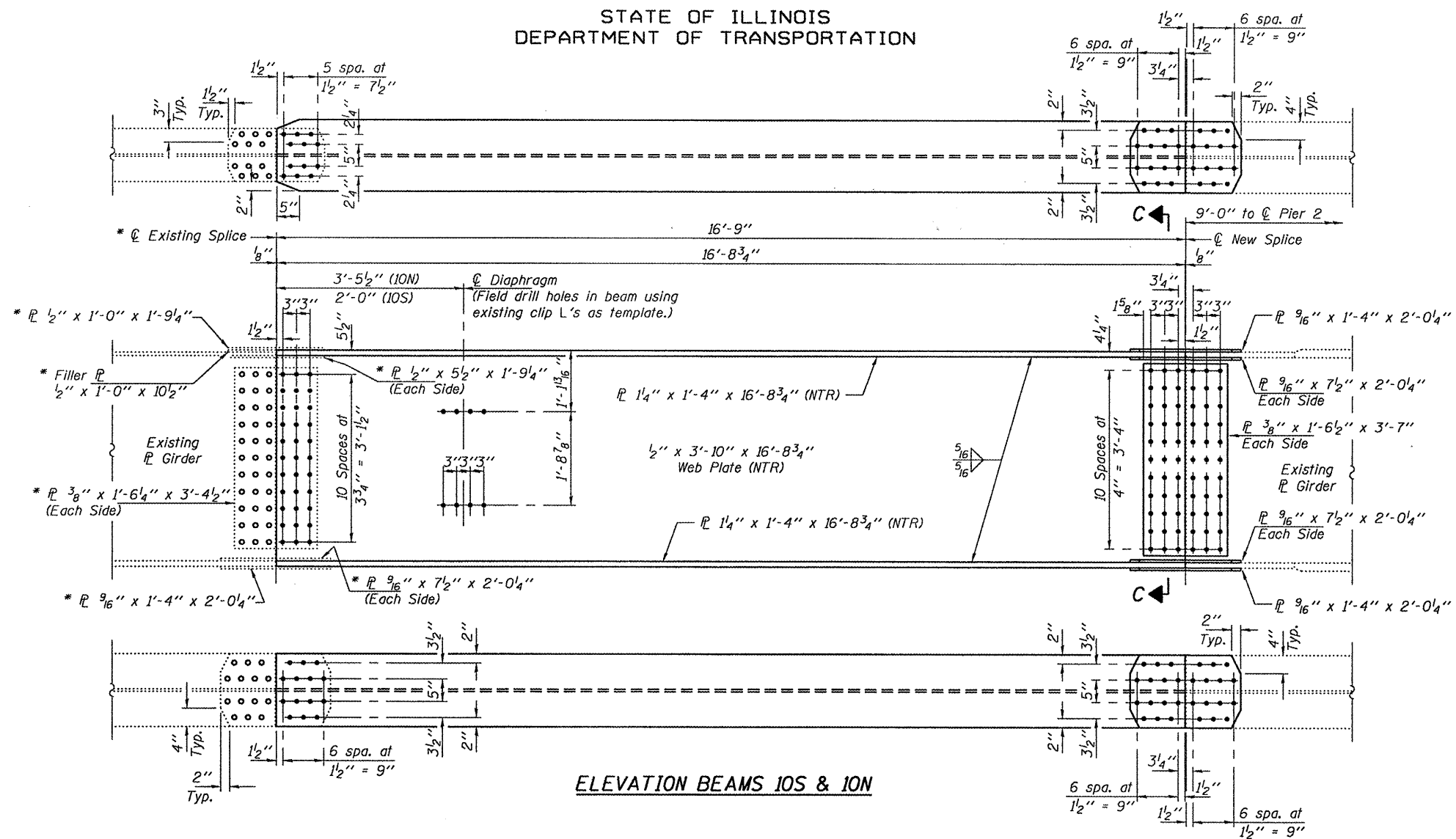


STATE OF ILLINOIS
DEPARTMENT OF TRANSPORTATION

* Use new flange and web splice L's at Beam 10S. Use existing flange and web splice L's at Beam 10N and use existing L's as template to field drill holes into new beam.



BEAM REPLACEMENT DETAILS
SN 022-0096 & 0097

DESIGNED	AJB
CHECKED	ATH
DRAWN	Kyle M. Steffen
CHECKED	AJB ATH

JUNE 18, 2009
 EXAMINED *Carl Hoyer*
 ENGINEER OF STRUCTURAL SERVICES
 PASSED *Ralph E. Anderson*
 ENGINEER OF BRIDGES AND STRUCTURES

SHEET NO. 2 2 SHEETS	F.A.I. RTE. 290	SECTION 22-2HB-1-F	COUNTY DuPAGE	TOTAL SHEETS 4	SHEET NO. 4
	CONTRACT NO. 60H71				
FED. ROAD DIST. NO. ILLINOIS FED. AID PROJECT					