

F.A.U. RTE.	SECTION	COUNTY	TOTAL SHEETS	SHEET NO.
1319	2009-067 RS	COOK	22	1
FED. ROAD DIST. NO.	ILLINOIS	CONTRACT NO. 60H73		

STATE OF ILLINOIS  
DEPARTMENT OF TRANSPORTATION  
DIVISION OF HIGHWAYS

**PROPOSED  
HIGHWAY PLANS**

F.A.U. ROUTE 1319: BALLARD RD.  
RAND RD. TO GREENWOOD AVE.

2009-067 RS  
RESURFACING  
PROJECT: *ESP-1319(001)*

COOK COUNTY  
C-91-781-09

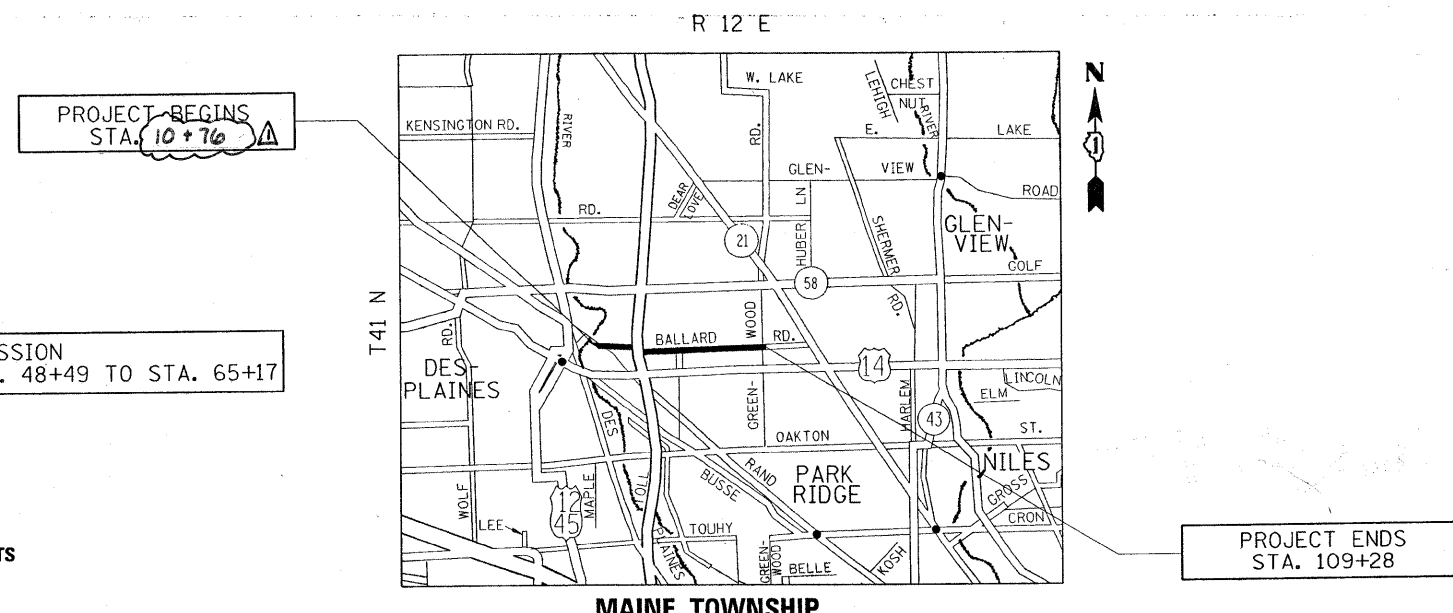
FOR INDEX OF SHEETS, SEE SHEET NO. 2

THE PROJECT IS LOCATED IN  
THE VILLAGES OF DES PLAINES, GLENVIEW,  
NILES, AND PARK RIDGE.

TRAFFIC DATA :  
2007 ADT = 12,800  
POSTED SPEED LIMIT = 35-40 MPH



LOCATION OF SECTION INDICATED THUS: - [black rectangle] -



FULL SIZE PLANS HAVE BEEN PREPARED USING STANDARD  
ENGINEERING SCALES. REDUCED SIZED PLANS WILL NOT  
CONFORM TO STANDARD SCALES. IN MAKING MEASUREMENTS  
ON REDUCED PLANS, THE ABOVE SCALES MAY BE USED.

J.U.L.I.E.  
JOINT UTILITY LOCATION INFORMATION FOR EXCAVATION  
1-800-892-0123  
OR 811

PROJECT ENGINEER ROBERT BORO (847) 705-4178  
PROJECT MANAGER KEN ENG

CONTRACT NO. 60H73

GROSS LENGTH OF PROJECT = 9,330 FEET = 1.77 MILES  
NET LENGTH OF PROJECT = 8,104 FEET = 1.55 MILES

STATE OF ILLINOIS  
DEPARTMENT OF TRANSPORTATION  
DIVISION OF HIGHWAYS

SUBMITTED June 24, 20 09  
*Dino D'Amico*  
DEPUTY DIRECTOR OF HIGHWAYS, REGION ENGINEER

August 14, 20 09  
*Charles J. Ingersoll*  
ENGINEER OF DESIGN AND ENVIRONMENT

August 14, 20 09  
*Christine M. Reed*  
DIRECTOR OF HIGHWAYS, CHIEF ENGINEER

PRINTED BY THE AUTHORITY  
OF THE STATE OF ILLINOIS

INDEX OF SHEETS

- 1 TITLE SHEET
- 2 INDEX OF SHEETS, STATE STANDARDS, AND GENERAL NOTES
- 3 SUMMARY OF QUANTITIES
- 4-5 TYPICAL SECTIONS
- 6-9 ROADWAY AND PAVEMENT MARKING PLAN
- 10-12A DETECTOR LOOPS REPLACEMENT PLANS
- 13 PAVEMENT PATCHING FOR HMA SURFACED PAVEMENT (BD-22)
- 14 CURB OR CURB AND GUTTER REMOVAL AND REPLACEMENT (BD-24)
- 15 BUTT JOINT AND HMA TAPER DETAILS (BD-32)
- 16 TRAFFIC CONTROL AND PROTECTION FOR SIDE ROADS, INTERSECTIONS AND DRIVEWAYS (TC-10)
- 17 TYPICAL APPLICATIONS RAISED REFLECTIVE PAVEMENT MARKERS (SNOW PLOW RESISTANT) (TC-11)
- 18 DISTRICT ONE TYPICAL PAVEMENT MARKINGS (TC-13)
- 19 TRAFFIC CONTROL & PROTECTION OF TURN BAYS (TO REMAIN OPEN TO TRAFFIC) (TC-14)
- 20 PAVEMENT MARKING LETTERS & SYMBOLS FOR TRAFFIC STAGING (TC-16)
- 21 ARTERIAL ROAD INFORMATION SIGN (TC-22)
- 22 DISTRICT 1 DETECTOR LOOP INSTALLATION DETAILS FOR ROADWAY RESURFACING (TS-07)

STATE STANDARDS

STANDARD NO.	DESCRIPTION
442201-03	CLASS C AND D PATCHES
606001-04	CONCRETE CURB TYPE B AND COMBINATION CONCRETE CURB AND GUTTER
701301-03	LANE CLOSURE, 2L, 2W, SHORT TIME OPERATIONS
701501-05	URBAN LANE CLOSURE, 2L, 2W UNDIVIDED
701701-06	URBAN LANE CLOSURE, MULTILANE INTERSECTION
701901-01	TRAFFIC CONTROL DEVICES

GENERAL NOTES

BEFORE STARTING ANY EXCAVATION, THE CONTRACTOR SHALL CALL "JULIE" AT 800-892-0123 or 811 FOR FIELD LOCATIONS OF BURIED ELECTRIC, TELEPHONE AND GAS FACILITIES. (48 HOUR NOTIFICATION IS REQUIRED)

THE CONTRACTOR SHALL COORDINATE CONSTRUCTION ACTIVITIES WITH UTILITY COMPANIES, AND THE VILLAGES OF DES PLAINES, GLENVIEW, NILES, AND PARK RIDGE.

THE CONTRACTOR WILL NOT BE ALLOWED TO SET UP A YARD OR FIELD OFFICE ON STATE PROPERTY WITHOUT WRITTEN PERMISSION FROM THE DEPARTMENT.

WHEN MILLED PAVEMENT IS OPEN TO TRAFFIC THE MAXIMUM GRADE DIFFERENTIAL BETWEEN PASSES OF THE MILLING MACHINE SHALL NOT EXCEED 1 1/2 INCHES (40 MM) WHERE THE SPEED LIMIT IS 40 MPH (80 KM/H) OR LESS AND 1 INCH (25 MM) WHERE THE SPEED LIMIT IS GREATER THAN 45 MPH (80 KM/H). WITH WRITTEN APPROVAL FROM THE ENGINEER, A MAXIMUM GRADE DIFFERENTIAL OF 3 INCHES (75 MM) MAY BE ALLOWED IF THE EDGE OF THE MILLING IS SLOPED A MINIMUM 1:3 (V:H).

BUTT JOINTS WILL BE INSTALLED AT THE ENDS OF ALL RESURFACING (WHERE RESURFACING MEETS EXISTING PAVEMENT), IN ACCORDANCE WITH THE "BUTT JOINT AND HOT-MIX ASPHALT TAPER DETAILS" SHEET INCLUDED IN THE PLANS, UNLESS OTHERWISE SPECIFIED.

UNLESS OTHER CONDITIONS WARRANT EXTENDED LANE CLOSURE AS DETERMINED AND APPROVED IN WRITING BY THE ENGINEER OR AS PROVIDED FOR IN THE CONTRACT SPECIFICATIONS, OVERNIGHT CLOSURES SHALL NOT BE ALLOWED FOR REHABILITATION PROJECTS INVOLVING DAYTIME MILLING AND RESURFACING OPERATIONS AND CLASS D PATCHING.

THE RESIDENT ENGINEER SHALL CONTACT WALLY CZARNY, AREA TRAFFIC FIELD ENGINEER AT (773) 685-8306 A MINIMUM OF 2 WEEKS PRIOR TO PLACEMENT OF PERMANENT PAVEMENT MARKING.

BEFORE BEGINNING ANY WORK, THE CONTRACTOR SHALL RETAIN AND RECORD FOR FUTURE REFERENCE, ALL EXISTING PAVEMENT MARKING LINES (AND RAISED REFLECTIVE PAVEMENT MARKINGS) IN ORDER THAT THESE LOCATIONS CAN BE RE-ESTABLISHED FOR STRIPING. EXACT LOCATIONS OF ALL PAVEMENT MARKINGS SHALL BE AS DIRECTED BY THE ENGINEER.

ALL DAMAGE TO EXISTING PAVEMENT MARKINGS OR RAISED REFLECTIVE PAVEMENT MARKINGS OUTSIDE THE REMOVAL LINE SHOWN ON THE PLANS SHALL BE REPLACED AT NO ADDITIONAL COST TO THE DEPARTMENT.

PAVEMENT MARKING TAPE, TYPE III SHALL BE USED FOR SHORT TERM PAVEMENT MARKINGS ON ALL FINAL SURFACES. THE COST OF THE PAVEMENT MARKING TAPE, TYPE III AND ITS REMOVAL SHALL BE INCLUDED IN THE COST OF SHORT TERM PAVEMENT MARKING.

THE CONTRACTOR SHALL CONTACT THE DISTRICT ONE TRAFFIC CONTROL SUPERVISOR AT (847) 705-4470. A MINIMUM OF 72 HOURS IN ADVANCE OF BEGINING OF WORK.

ALL PAVEMENT PATCHING LOCATIONS WILL BE DETERMINED IN THE FIELD BY THE ENGINEER.

IT SHALL BE THE CONTRACTOR'S RESPONSIBILITY TO VERIFY ALL DIMENSIONS AND CONDITIONS EXISTING IN THE FIELD PRIOR TO CONSTRUCTION AND ORDERING OF MATERIALS.

THE CONTRACTOR SHALL BE REQUIRED TO PROVIDE ACCESS TO ABUTTING PROPERTY AT ALL TIMES DURING THE CONSTRUCTION OF THIS PROJECT.

DO NOT SCALE PLANS FOR CONSTRUCTION DIMENSIONS.

DOUBLE LANE MARKERS ARE TO BE USED AS SHOWN ON THE DISTRICT ONE DETAIL "TYPICAL APPLICATIONS- RAISED REFLECTIVE PAVEMENT MARKERS (SNOW-PLOW RESISTANT)" SHOWN IN THE PLANS.

THE ENGINEER SHALL REPORT CLEARANCES UNDER BRIDGE AFTER RESURFACING.

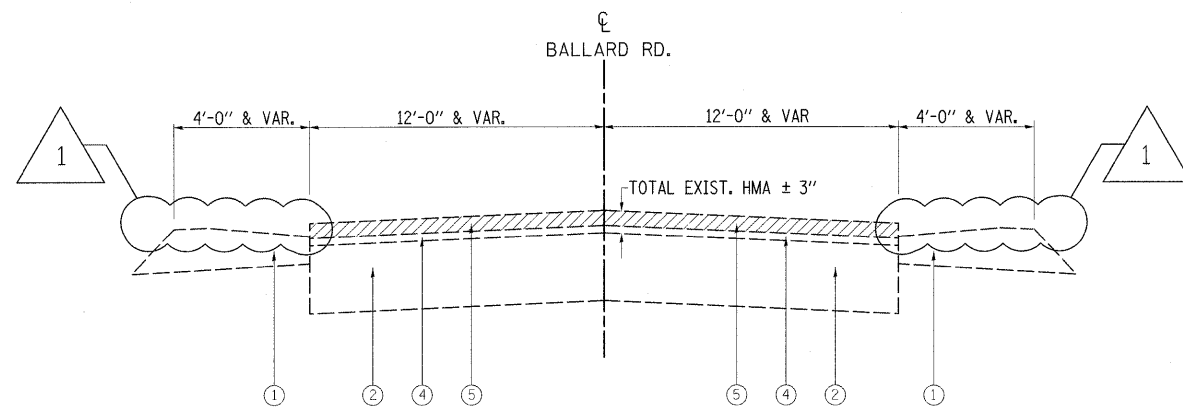
FILE NAME =	USER NAME = parayngal	DESIGNED - Designed By	REVISED - Revised By1	STATE OF ILLINOIS DEPARTMENT OF TRANSPORTATION	BALLARD RD. (RAND RD. TO GREENWOOD AVE.) INDEX OF SHEETS, STATE STANDARDS AND GENERAL NOTES	F.A.U. RTE.	SECTION	COUNTY	TOTAL SHEETS	SHEET NO.	
cd:\pwwork\PWIDOT\PARAYNGAL\0145755\0178109-sht.pln.dgn	78109-sht.pln.dgn	DRAWN - Drawn By	REVISED - Revised By2			1319	2009-067 RS	COOK	22	2	
PLOT SCALE = 50.0000' / IN.		CHECKED - Checked By	REVISED - Revised By3			CONTRACT NO. 60H73					
PLOT DATE = 6/25/2009		DATE - Checked Date	REVISED - Revised By4			SCALE: Scale	Station To	FED. ROAD DIST. NO. [ILLINOIS] FED. AID PROJECT			

SUMMARY OF QUANTITIES			CONSTRUCTION TYPE CODE					SUMMARY OF QUANTITIES			CONSTRUCTION TYPE CODE							
CODE NO	ITEM	UNIT	TOTAL QUANTITIES	URBAN I000-2A					CODE NO	ITEM	UNIT	TOTAL QUANTITIES	URBAN I000-2A					
20201006	GRADING AND SHAPING SHOULDERS	UNIT	92	92					70300210	TEMPORARY PAVEMENT MARKING - LETTERS AND SYMBOLS	SO FT	521	521					
40600200	BITUMINOUS MATERIALS (PRIME COAT)	TON	30	30					70300220	TEMPORARY PAVEMENT MARKING - LINE 4"	FOOT	29,743	29,743					
40600300	AGGREGATE (PRIME COAT)	TON	149	149					70300240	TEMPORARY PAVEMENT MARKING - LINE 6"	FOOT	1,680	1,680					
40600400	MIXTURE FOR CRACKS, JOINTS, AND FLANGWAYS	TON	50	50					70300260	TEMPORARY PAVEMENT MARKING - LINE 12"	FOOT	350	350					
40600895	CONSTRUCTING TEST STRIP	EACH	1	1					70300280	TEMPORARY PAVEMENT MARKING - LINE 24"	FOOT	200	200					
40600982	HOT-MIX ASPHALT SURFACE REMOVAL - BUTT JOINT	SO YD	415	415					* 78000100	THERMOPLASTIC PAVEMENT MARKING - LETTERS AND SYMBOLS	SO FT	521	521					
40601005	HOT-MIX ASPHALT REPLACEMENT OVER PATCHES	TON	416	416					* 78000200	THERMOPLASTIC PAVEMENT MARKING - LINE 4"	FOOT	29,743	29,743					
40603340	HOT-MIX ASPHALT SURFACE COURSE, MIX "D", N70	TON	3,117	3,117					* 78000400	THERMOPLASTIC PAVEMENT MARKING - LINE 6"	FOOT	1,680	1,680					
42001300	PROTECTIVE COAT	SO YD	42	42					* 78000600	THERMOPLASTIC PAVEMENT MARKING - LINE 12"	FOOT	350	350					
44000157	HOT-MIX ASPHALT SURFACE REMOVAL, 2"	SO YD	30,684	30,684					* 78000650	THERMOPLASTIC PAVEMENT MARKING - LINE 24"	FOOT	200	200					
44001700	COMBINATION CONCRETE CURB AND GUTTER REMOVAL AND REPLACEMENT	FOOT	275	275					* 78100100	RAISED REFLECTIVE PAVEMENT MARKER	EACH	152	152					
44002212	HOT-MIX ASPHALT REMOVAL OVER PATCHES, 3"	SO YD	2,469	2,469					78300200	RAISED REFLECTIVE PAVEMENT MARKER REMOVAL	EACH	115	115					
44201749	CLASS D PATCHES, TYPE I, 9 INCH	SO YD	741	741					* 88600600	DETECTOR LOOP REPLACEMENT	FOOT	1089	1089					
44201753	CLASS D PATCHES, TYPE II, 9 INCH	SO YD	987	987					X0322256	TEMPORARY INFORMATION SIGNING	SO FT	154.2	154.2					
44201757	CLASS D PATCHES, TYPE III, 9 INCH	SO YD	741	741					X4067107	POLYMERIZED LEVELING BINDER (MACHINE METHOD), IL-4, 75, N50	TON	1445	1445					
48102100	AGGREGATE WEDGE SHOULDER, TYPE B	TON	389	389					* 55039700	STORM SEWERS TO BE CLEANED	FOOT	100	100					
60300305	FRAMES AND LIDS TO BE ADJUSTED	EACH	15	15					* 20018500	DRAINAGE STRUCTURES TO BE CLEANED	EACH	8	8					
60300310	FRAMES AND LIDS TO BE ADJUSTED (SPECIAL)	EACH	19	19														
67000400	ENGINEER'S FIELD OFFICE, TYPE A	CAL MO	3	3														
67100100	MOBILIZATION	L SUM	1	1														
70102620	TRAFFIC CONTROL AND PROTECTION, STANDARD 701501	L SUM	1	1														
70102635	TRAFFIC CONTROL AND PROTECTION, STANDARD 701701	L SUM	1	1														
70300100	SHORT-TERM PAVEMENT MARKING	FOOT	6,696	6,696														

\* Specialty Items

NON-PARTICIPATING (100% STATE)

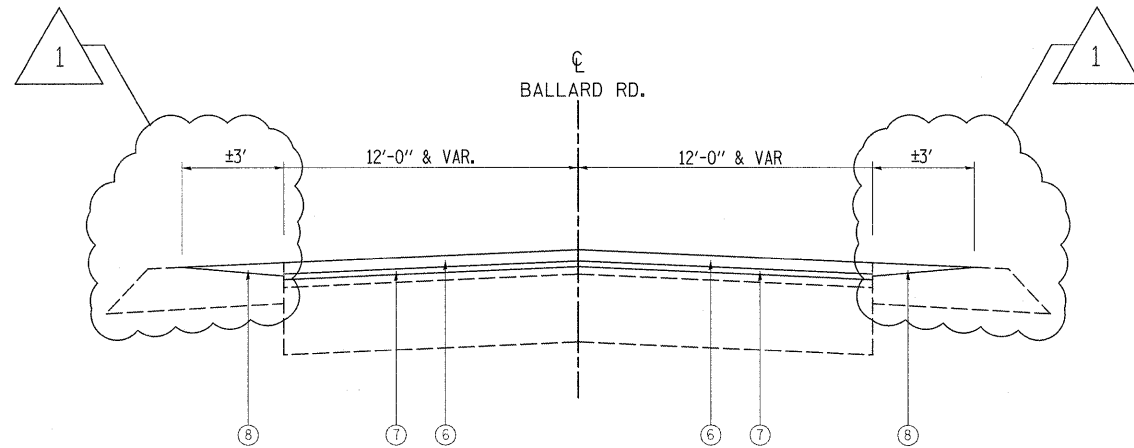
Rev. 8-31-09



**BALLARD RD.  
EXIST. TYPICAL SECTION**  
STA. 15+98 TO STA. 48+49

**LEGEND**

- ① EXIST. AGGREGATE SHOULDER
- ② EXIST. PCC BASE COURSE, (±)9"
- ③ EXIST. COMBINATION CONCRETE CURB AND GUTTER TYPE B-6.24
- ④ EXIST. REMAINING HMA AFTER MILLING, (±)1"
- ⑤ PROP. HOT-MIX ASPHALT SURFACE REMOVAL - 2"
- ⑥ PROP. HOT-MIX ASPHALT SURFACE COURSE, MIX "D", N70, 1 1/2"
- ⑦ PROP. POLYMERIZED LEVELING BINDER (MM), IL-4.75, N50, 3/4"
- ⑧ PROP. AGGREGATE WEDGE SHOULDER, TYPE B



**BALLARD RD.  
EXIST. TYPICAL SECTION**  
STA. 15+98 TO STA. 48+49

NOTE: CONTRACTOR SHALL PATCH FIRST BEFORE MILLING

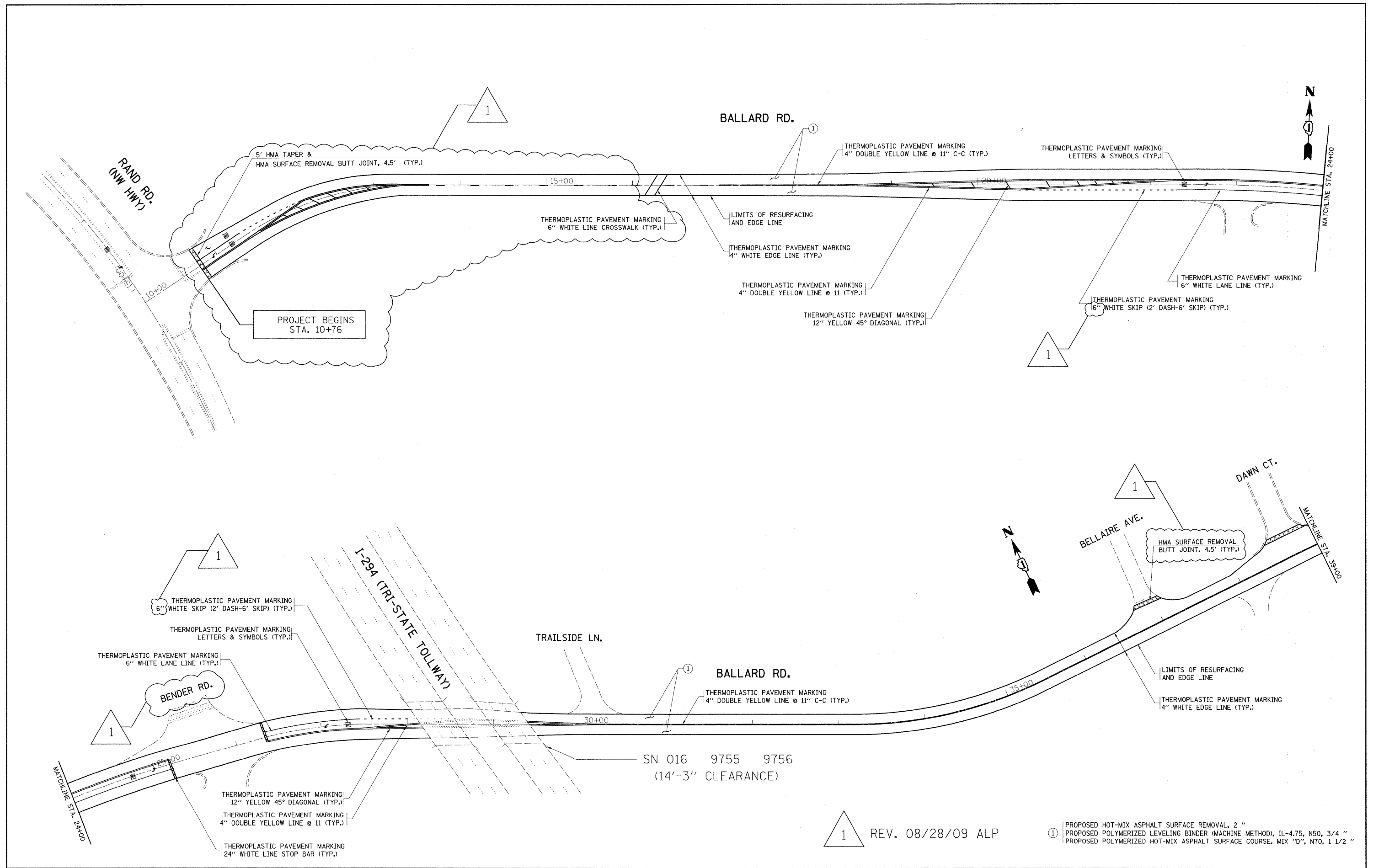
**HOT-MIX ASPHALT MIXTURE REQUIREMENTS**

MIXTURE TYPE	AC TYPE	AIR VOIDS
HOT-MIX ASPHALT SURFACE COURSE, MIX "D", N70 (IL 9.5 mm)	PG 64-22	4% @ 70 GYR
POLYMERIZED LEVELING BINDER, (MM), IL-4.75, N50	SBS/SBR PG 76-28/-22	4% @ 50 GYR
CLASS D PATCHES, (HMA BINDER IL-19 mm)	PG 64-22*	4% @ 70 GYR
HMA REPLACEMENT OVER PATCHES (HMA BINDER IL-19 mm)	PG 64-22 / 58-22	4% @ 70 GYR

THE UNIT WEIGHT USED TO CALCULATE ALL HOT-MIX ASPHALT SURFACE MIXTURE QUANTITIES IS 112 LBS/SQYD/IN.

\*WHEN RAP EXCEEDS 20%, THE NEW ASPHALT BINDER IN THE MIX SHALL BE PG 58-22

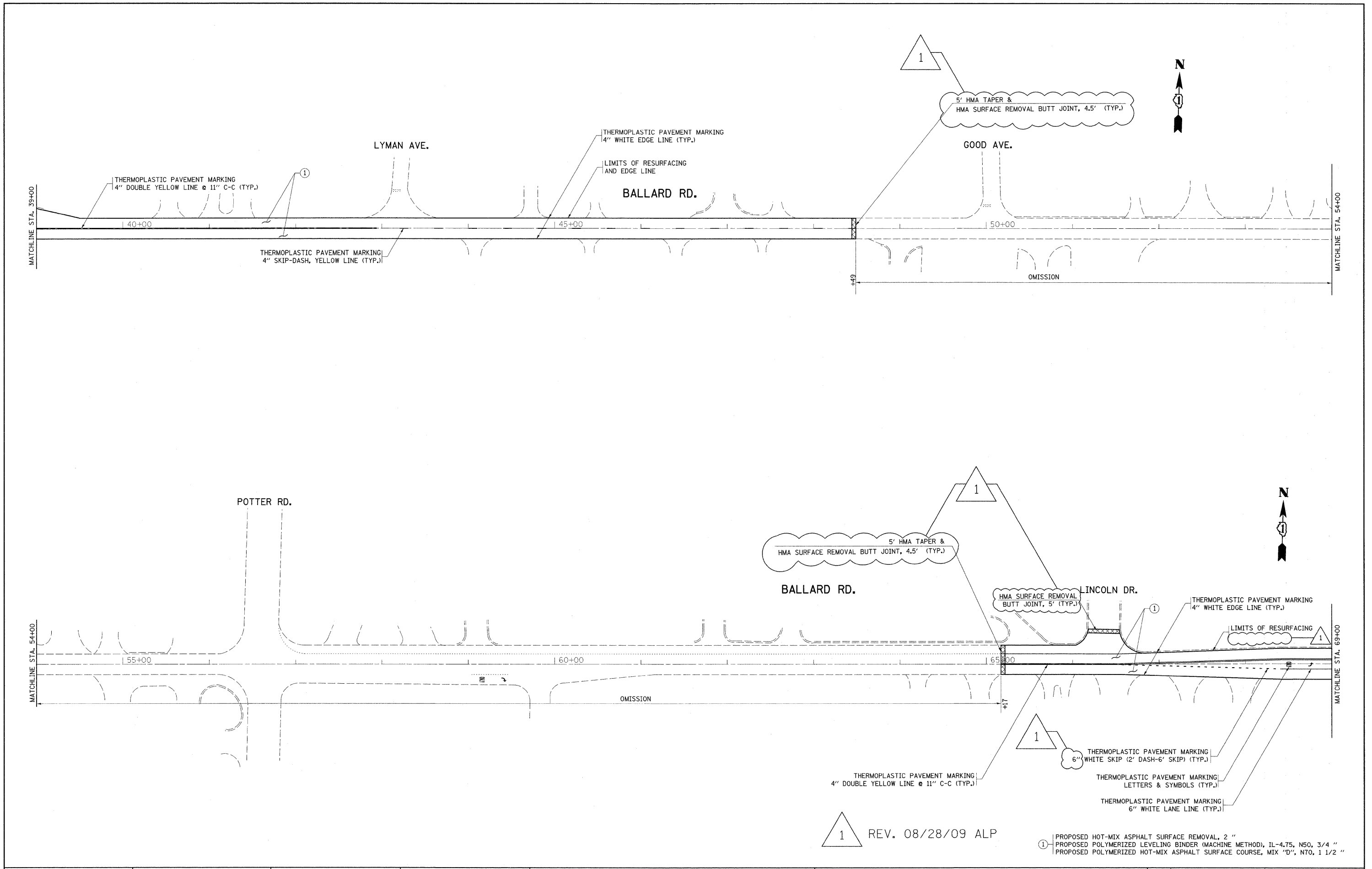
1 REV. 08/28/09 ALP



1 REV. 08/28/09 ALP

- ① PROPOSED HOT-MIX ASPHALT SURFACE REMOVAL, 2"
- ① PROPOSED POLYMERIZED LEVELING BINDER (MACHINE METHOD), IL-4.75, N50, 3/4"
- ① PROPOSED POLYMERIZED HOT-MIX ASPHALT SURFACE COURSE, MIX "D", N70, 1 1/2"

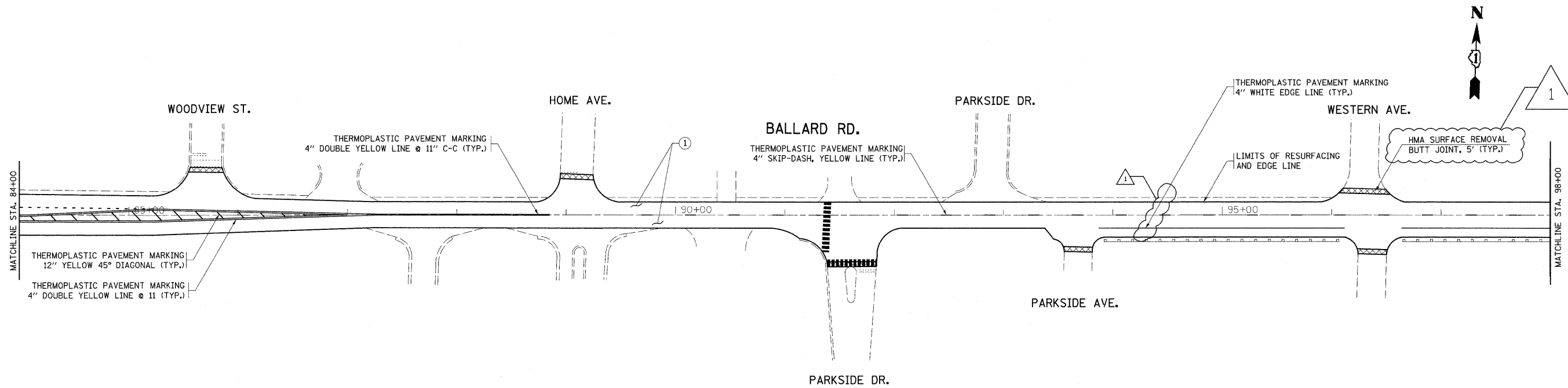
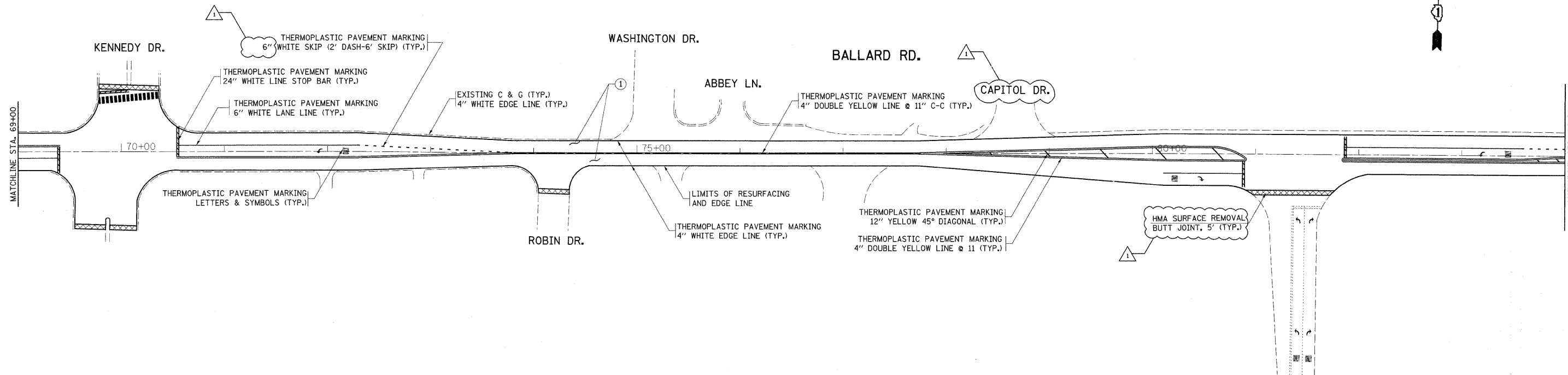
FILE NAME =	USER NAME = paragnal	DESIGNED -	REVISED -	<b>STATE OF ILLINOIS DEPARTMENT OF TRANSPORTATION</b>	<b>ROADWAY AND PAVEMENT MARKING PLAN BALLARD RD. (RAND RD. - GREENWOOD AVE.)</b>	F.A.U. RTE.	SECTION	COUNTY	TOTAL SHEETS	SHEET NO.	
ca:\pwork\pwork\paragnal\145755\0178109-shr-plan.dgn	PLOT SCALE = 50,0000' / IN.	DRAWN -	REVISED -			1319	2009-067 RS	COOK	22	6	
PLOT DATE = 6/29/2009	DATE -	CHECKED -	REVISED -			CONTRACT NO. 60H73					
		DATE -	REVISED -			ILLINOIS FED. AID PROJECT					



1 REV. 08/28/09 ALP

- 1 PROPOSED HOT-MIX ASPHALT SURFACE REMOVAL, 2 "
- 1 PROPOSED POLYMERIZED LEVELING BINDER (MACHINE METHOD), IL-4.75, N50, 3/4 "
- 1 PROPOSED POLYMERIZED HOT-MIX ASPHALT SURFACE COURSE, MIX "D", N70, 1 1/2 "

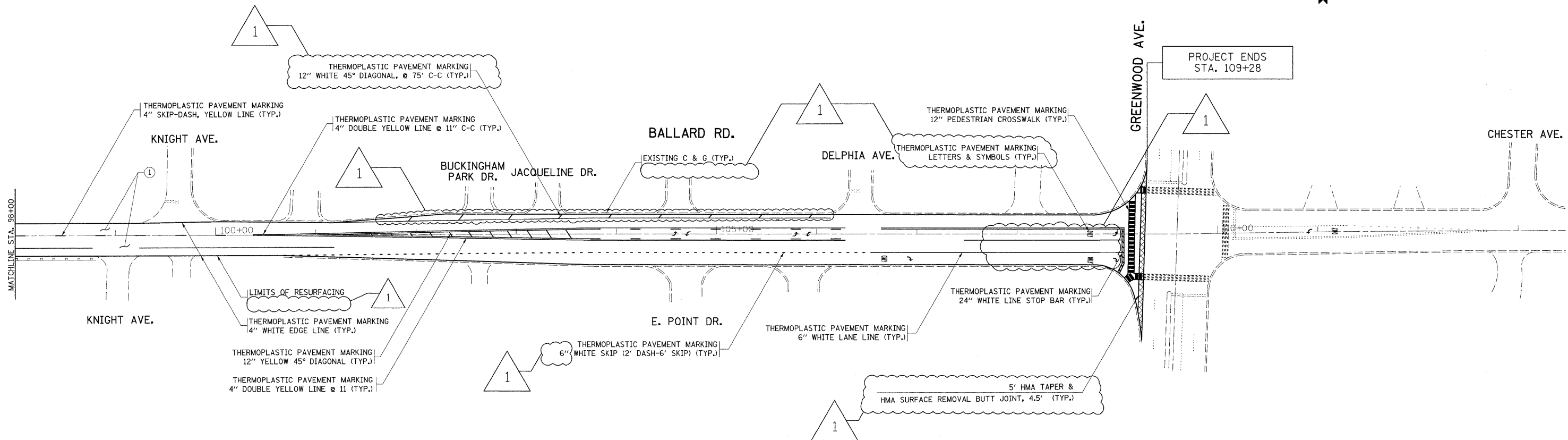
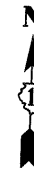
FILE NAME =	USER NAME = pareynoa	DESIGNED -	REVISED -	<b>STATE OF ILLINOIS DEPARTMENT OF TRANSPORTATION</b>	<b>ROADWAY AND PAVEMENT MARKING PLAN BALLARD RD. (RAND RD. - GREENWOOD AVE.)</b>	F.A. RTE.	SECTION	COUNTY	TOTAL SHEETS	SHEET NO.	
cr:\pwwork\pwwork\pareynoa\145755\01	8109-sht-plan.dgn	DRAWN -	REVISED -			1319	2009-067 RS	COOK	22	7	
PLOT SCALE = 50.0000' / IN.		CHECKED -	REVISED -			CONTRACT NO. 60H73					
PLOT DATE = 8/28/2009		DATE -	REVISED -			ILLINOIS FED. AID PROJECT					



1 REV. 08/28/09 ALP

- ① PROPOSED HOT-MIX ASPHALT SURFACE REMOVAL, 2"
- ① PROPOSED POLYMERIZED LEVELING BINDER (MACHINE METHOD), IL-4.75, N50, 3/4"
- ① PROPOSED POLYMERIZED HOT-MIX ASPHALT SURFACE COURSE, MIX "D", N70, 1 1/2"

FILE NAME =	USER NAME = parajnoal	DESIGNED -	REVISED -	<b>STATE OF ILLINOIS DEPARTMENT OF TRANSPORTATION</b>	<b>ROADWAY AND PAVEMENT MARKING PLAN BALLARD RD. (RAND RD. - GREENWOOD AVE.)</b>	F.A.J. RTE.	SECTION	COUNTY	TOTAL SHEETS	SHEET NO.	
ca:\pwork\pav\parajnoal\08145755\0178129-sht-plan.dgn	PLOT SCALE = 50,001' / IN.	DRAWN -	REVISED -			1319	2009-067 RS	COOK	22	8	
PLOT DATE = 8/28/2009	DATE -	CHECKED -	REVISED -			CONTRACT NO. 60H73					
		DATE -	REVISED -			ILLINOIS FED. AID PROJECT					



1 REV. 08/28/09 ALP

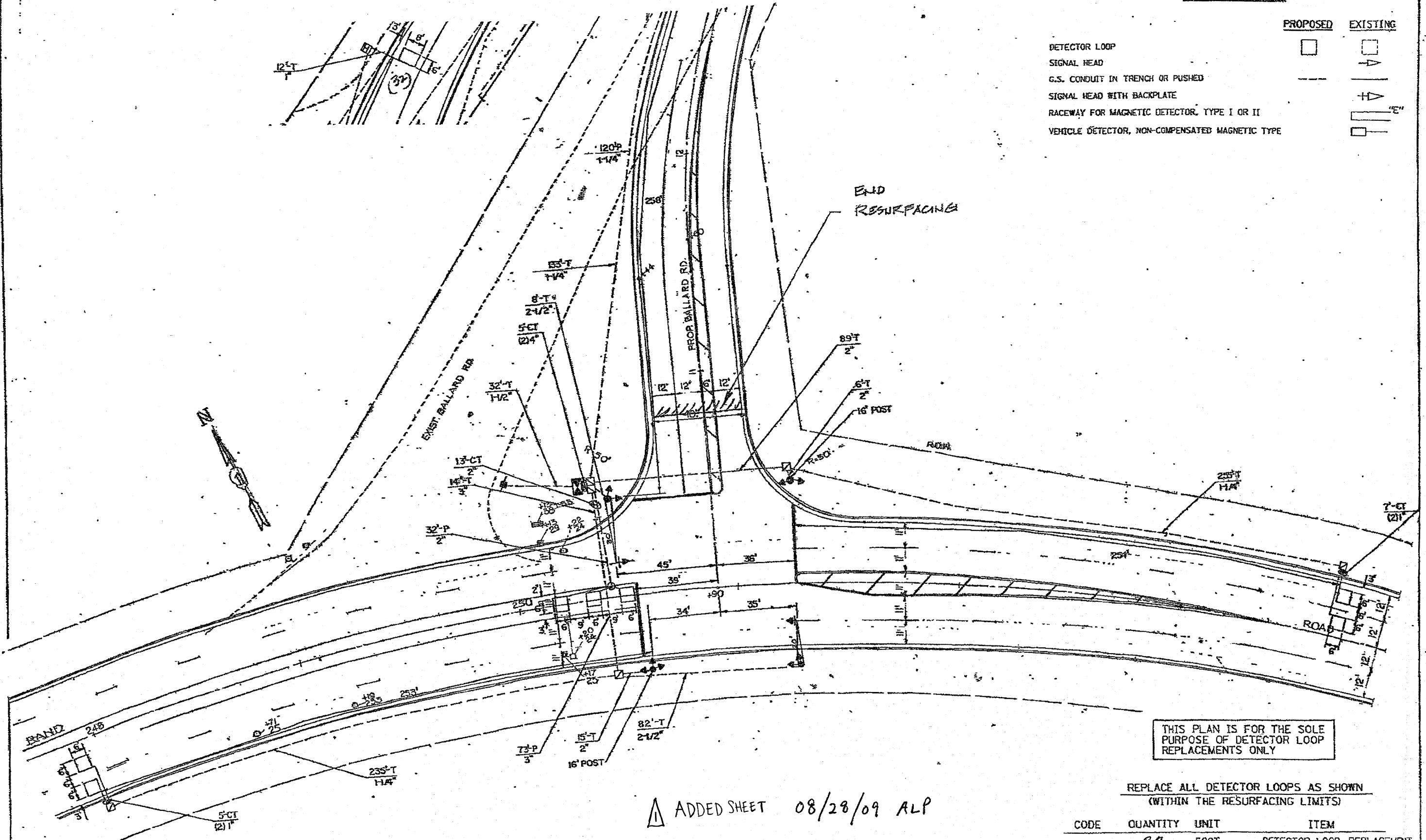
- ① PROPOSED HOT-MIX ASPHALT SURFACE REMOVAL, 2"
- ① PROPOSED POLYMERIZED LEVELING BINDER (MACHINE METHOD), IL-4.75, N50, 3/4"
- ① PROPOSED POLYMERIZED HOT-MIX ASPHALT SURFACE COURSE, MIX "D", N70, 1 1/2"

FILE NAME =	USER NAME = paragnol	DESIGNED -	REVISED -	<b>STATE OF ILLINOIS DEPARTMENT OF TRANSPORTATION</b>	<b>ROADWAY AND PAVEMENT MARKING PLAN BALLARD RD. (RAND RD. - GREENWOOD AVE.)</b>	F.A.J. RTE.	SECTION	COUNTY	TOTAL SHEETS	SHEET NO.	
ct:\pw_work\psidot\paragnol\20145755\0178109-ahp-plan.dgn	PLOT SCALE = 50.0000' / IN.	DRAWN -	REVISED -			1319	2009-067 RS	COOK	22	9	
PLOT DATE = 8/28/2009	DATE -	CHECKED -	REVISED -			CONTRACT NO. 60H73					
						ILLINOIS FED. AID PROJECT					



TRAFFIC SIGNAL LEGEND

	PROPOSED	EXISTING
DETECTOR LOOP		
SIGNAL HEAD		
G.S. CONDUIT IN TRENCH OR PUSHED		
SIGNAL HEAD WITH BACKPLATE		
RACEWAY FOR MAGNETIC DETECTOR, TYPE I OR II		
VEHICLE DETECTOR, NON-COMPENSATED MAGNETIC TYPE		



THIS PLAN IS FOR THE SOLE PURPOSE OF DETECTOR LOOP REPLACEMENTS ONLY

△ ADDED SHEET 08/28/09 ALP

REPLACE ALL DETECTOR LOOPS AS SHOWN (WITHIN THE RESURFACING LIMITS)

CODE	QUANTITY	UNIT	ITEM
86600600	32	FOOT	DETECTOR LOOP, REPLACEMENT

FILE NAME =	USER NAME = kcorrhughes	DESIGNED - BCK	REVISED -	STATE OF ILLINOIS DEPARTMENT OF TRANSPORTATION	DISTRICT ONE - DETECTOR LOOP REPLACEMENT BALLARD RD. @ RAND ROAD	F.A. -	SECTION	COUNTY	TOTAL SHEET	
	4\Veroffec\legend_7.dgn	DRAWN - BCK	REVISED -			2399	2009-06785	COOK	32	NO.
	PLOT SCALE = 3/4" = 1' IN.	CHECKED - DAD	REVISED -			CONTRACT NO. 60473				
	PLOT DATE = 4/2/2009	DATE -	REVISED -			FED. ROAD DIST. NO. ILLINOIS FED. AID PROJECT				