

F.A.U. RTE.	SECTION	COUNTY	TOTAL SHEETS	SHEET NO.
2706	CY-RS-6	LAKE	21	1
FED. ROAD DIST. NO. 1	ILLINOIS	CONTRACT NO. 60H90		

D-91-830-09



LOCATION OF SECTION INDICATED THUS: —■—

STATE OF ILLINOIS

DEPARTMENT OF TRANSPORTATION

DIVISION OF HIGHWAYS

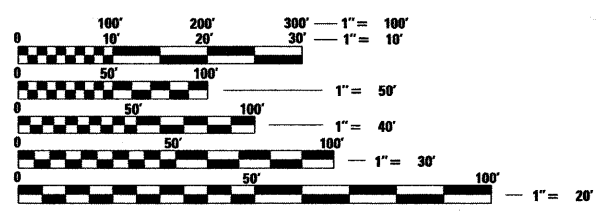
PROPOSED HIGHWAY PLANS

**F.A.U. 2706: ILLINOIS ROUTE 43 (WAUKEGAN RD.)
ILLINOIS ROUTE 60 TO GAGE LANE
SECTION: CY-RS-6
RESURFACING (3P)
LAKE COUNTY
C-91-830-09
PROJECT: ESP-2706(106)**

FOR INDEX OF SHEETS, SEE SHEET NO. 2

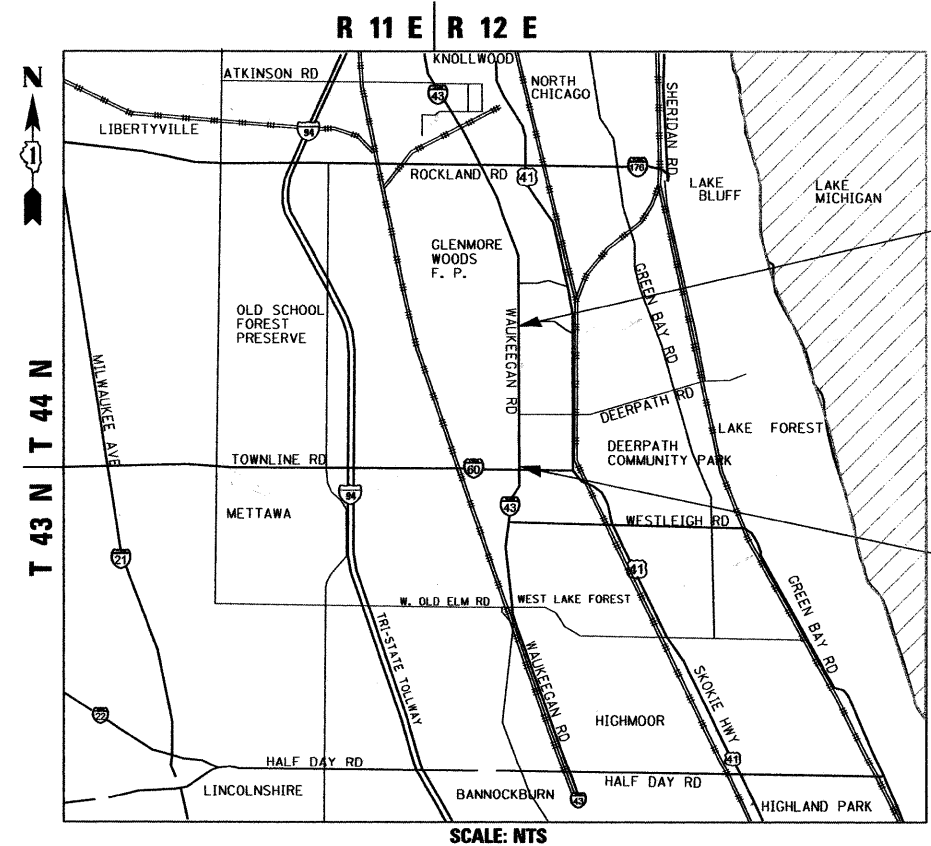
IMPROVEMENT LOCATED WITHIN THE CITY OF LAKE FOREST,
AND VILLAGE OF LAKE BLUFF

TRAFFIC DATA
IL ROUTE 43
2007 ADT = 25,600
SPEED LIMIT = 45 MPH



FULL SIZE PLANS HAVE BEEN PREPARED USING STANDARD ENGINEERING SCALES. REDUCED SIZED PLANS WILL NOT CONFORM TO STANDARD SCALES. IN MAKING MEASUREMENTS ON REDUCED PLANS, THE ABOVE SCALES MAY BE USED.

J.U.L.I.E.
JOINT UTILITY LOCATION INFORMATION FOR EXCAVATION
1-800-892-0123
OR 811



IMPROVEMENT ENDS
STA. 338 + 95

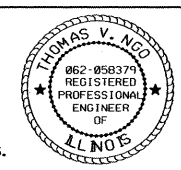
IMPROVEMENT BEGINS
STA. 252 + 88

SHIELDS TOWNSHIPS

GROSS & NET LENGTH OF PROJECT = 8,607 FT = 1.63 MILES

MILLENNIA PROFESSIONAL SERVICES
THOMAS V. NGO, P.E.
062-058379

Thomas V. Ngo
DATE: 07/07/09
SIGNATURE AND SEAL APPLIES TO DRWG.



STATE OF ILLINOIS
DEPARTMENT OF TRANSPORTATION
DIVISION OF HIGHWAYS

SUBMITTED July 13, 20 09


Diana M. O'Keefe
DEPUTY DIRECTOR OF HIGHWAYS, REGION ENGINEER

August 14, 20 09

Charles J. Ingersoll
ENGINEER OF DESIGN AND ENVIRONMENT

August 14, 20 09

Christine M. Reed
DIRECTOR OF HIGHWAYS, CHIEF ENGINEER



200 22ND Street, Suite 216, Lombard, IL 60148
630.705.0110 voice, 630.839.2566 fax
www.mps-il.com

MILLENNIA PROFESSIONAL SERVICES

DISTRICT ONE -
PROJECT MANAGER: LONG TRAN (847) 705-4232
PROJECT ENGINEER: MICHELLE AQUINO (847) 705-4606
CONTRACT NO. 60H90

**PRINTED BY THE AUTHORITY
OF THE STATE OF ILLINOIS**