

F.A.U. RTE.	SECTION	COUNTY	TOTAL SHEETS	SHEET NO.
2759	0505 RS-8	COOK	21	1
FED. ROAD DIST. NO. 1		ILLINOIS	CONTRACT NO. 60102	

FOR INDEX OF SHEETS, SEE SHEET NO. 2

DESIGN DESIGNATION:
SPEED LIMIT : 30 M.P.H. AND 35 M.P.H.
2006 ADT = 14,900

PROJECT LOCATED IN THE VILLAGE OF FOREST PARK

STATE OF ILLINOIS
DEPARTMENT OF TRANSPORTATION
DIVISION OF HIGHWAYS

**PROPOSED
HIGHWAY PLANS**

**F.A.U. 2759 / DES PLAINES AVENUE
SECTION: 0505 RS-8
ROOSEVELT ROAD TO CERMAK ROAD
RESURFACING (3P)
PROJECT: ESP-2759(004)
COOK COUNTY
C-91-842-09**

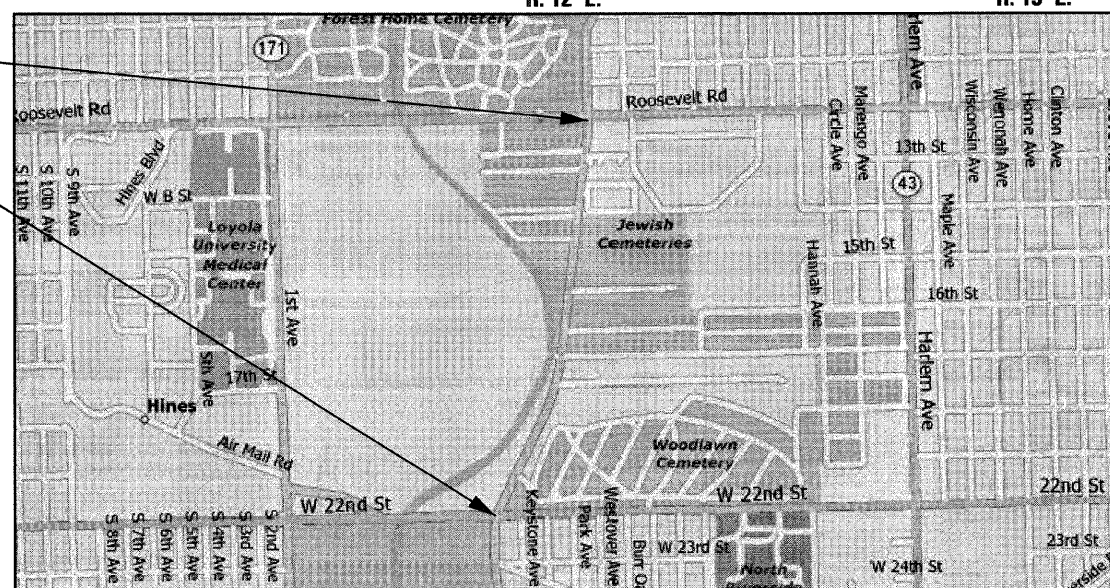
D-91-842-09



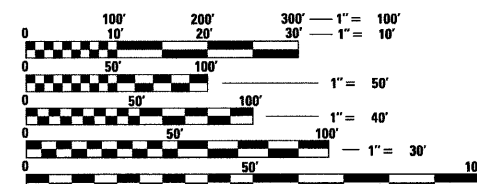
LOCATION OF SECTION INDICATED THUS: - [Symbol] -

**PROJECT ENDS
STA. 99 + 69**

**PROJECT BEGINS
STA. 44 + 86**



T. 38 N.



FULL SIZE PLANS HAVE BEEN PREPARED USING STANDARD ENGINEERING SCALES. REDUCED SIZED PLANS WILL NOT CONFORM TO STANDARD SCALES. IN MAKING MEASUREMENTS ON REDUCED PLANS, THE ABOVE SCALES MAY BE USED.

J.U.L.I.E.
JOINT UTILITY LOCATING INFORMATION FOR EXCAVATORS
1-800-892-0123

DISTRICT ONE - PLAN PREP ENGINEER:
KEN ENG (847) 705-4247

CONTRACT NO. 60102

GROSS LENGTH OF PROJECT = 5,483 FEET = 1.038 MILES
NET LENGTH OF PROJECT = 5,483 FEET = 1.038 MILES

STATE OF ILLINOIS
DEPARTMENT OF TRANSPORTATION
DIVISION OF HIGHWAYS

SUBMITTED July 8, 2009
Diana M. O'Keefe DEPUTY DIRECTOR OF HIGHWAYS, REGION ONE ENGINEER
August 14, 2009
Charles G. Orgeron ENGINEER OF DESIGN AND ENVIRONMENT
August 14, 2009
Christine M. Reed DIRECTOR OF HIGHWAYS, CHIEF ENGINEER



Birinder S. Sachdeva
BIRINDER S. SACHDEVA, P.E.
EXPIRES: 11-30-2009

7-7-09
DATE

CR & A
CHRISTIAN-ROGE & ASSOCIATES, INC.
ENGINEERS - PLANNERS - SURVEYORS
211 W. WACKER DRIVE CHICAGO, IL. 60606
TELEPHONE: 312-372-2023

**PRINTED BY THE AUTHORITY
OF THE STATE OF ILLINOIS**