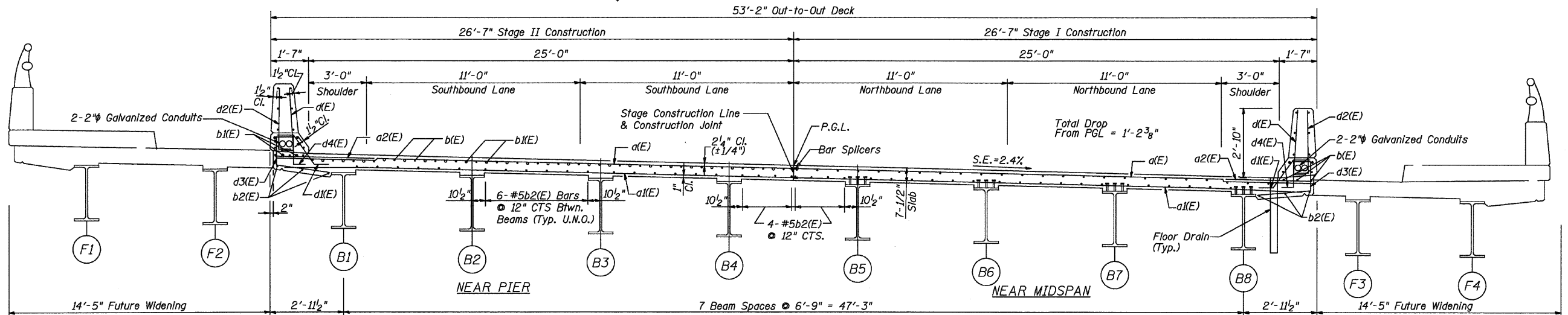
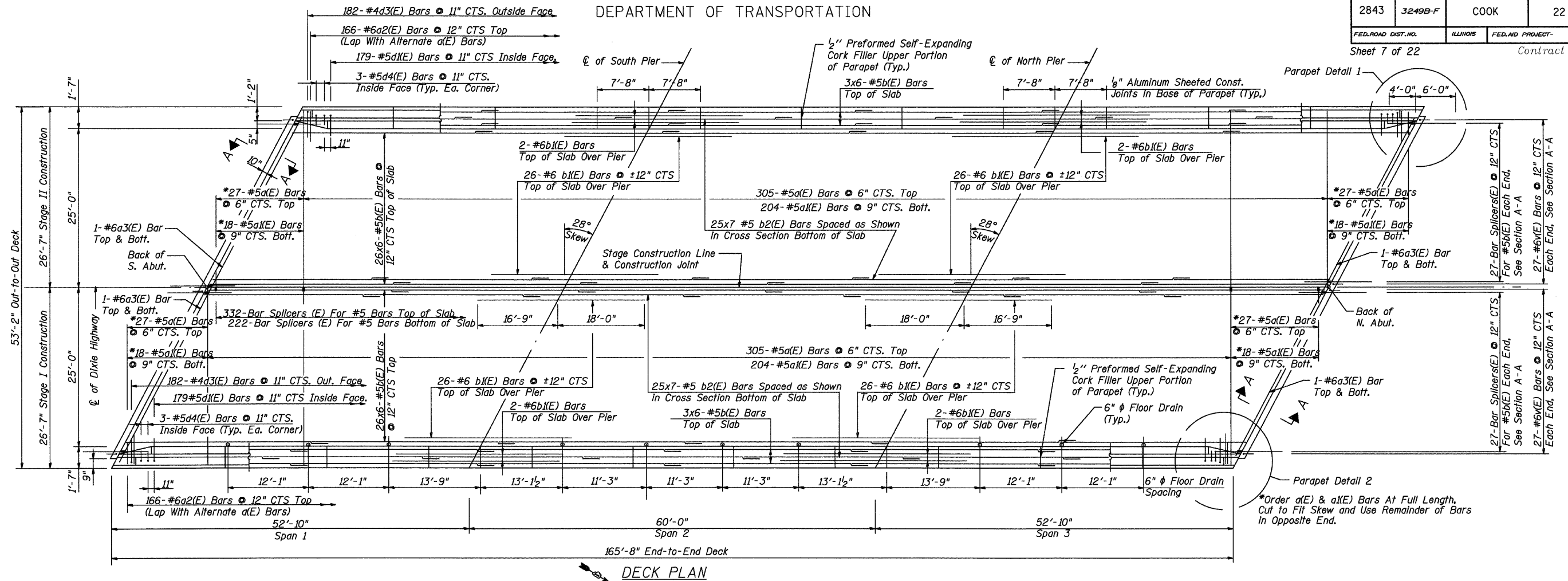


STATE OF ILLINOIS  
DEPARTMENT OF TRANSPORTATION

| F.A.U. RT.E.        | SECTION | COUNTY   | TOTAL SHEETS     | SHEET NO. |
|---------------------|---------|----------|------------------|-----------|
| 2843                | 3249B-F | COOK     | 22               | 9         |
| FED. ROAD DIST. NO. |         | ILLINOIS | FED. AID PROJECT |           |

Sheet 7 of 22 Contract No. 60119



Notes: See Sheet #10 of 22 for Superstructure Details and Bill of Material.  
Reinforcement Bars Designated (E) Shall be Epoxy Coated.  
Bars Indicated Thus 25 x 7-#5 etc. Indicates 25 Lines of Bars With 7 Lengths per Line.  
See Sheet # 9 of 22 for Parapet Reinforcement.  
Space Reinforcement to Avoid Floor Drains.  
Minimum Bar Lap For #5 Bar - 2'-2".  
Minimum Bar Lap For #6 Bar - 2'-7".  
For Floor Drain Details, See Sht. #10 of 22.  
For Section A-A & Deck Diaphragm, See Sht #8 of 22.  
See Sheet #9 of 22 For Parapet Details 1 & 2.

CROSS SECTION  
Looking North

| REVISIONS |      |
|-----------|------|
| NAME      | DATE |
|           |      |
|           |      |
|           |      |
|           |      |
|           |      |
|           |      |
|           |      |
|           |      |
|           |      |

DECK PLAN AND CROSS SECTION

DIXIE HIGHWAY OVER  
BUTTERFIELD CREEK  
F.A.U. ROUTE 2843 SECTION 3249B-F  
STA. 78+55.00  
COOK COUNTY  
STRUCTURE NUMBER 016-7946 - PROPOSED  
016-0775 - EXISTING

SCALE: NOT-TO-SCALE  
DATE 4-27-09

DRAWN BY TH  
DESIGNED BY TH  
CHECKED BY MF



FOR INFORMATION ONLY

SHEET 9 OF 22.dgn 6/18/2009 10:31:47 AM