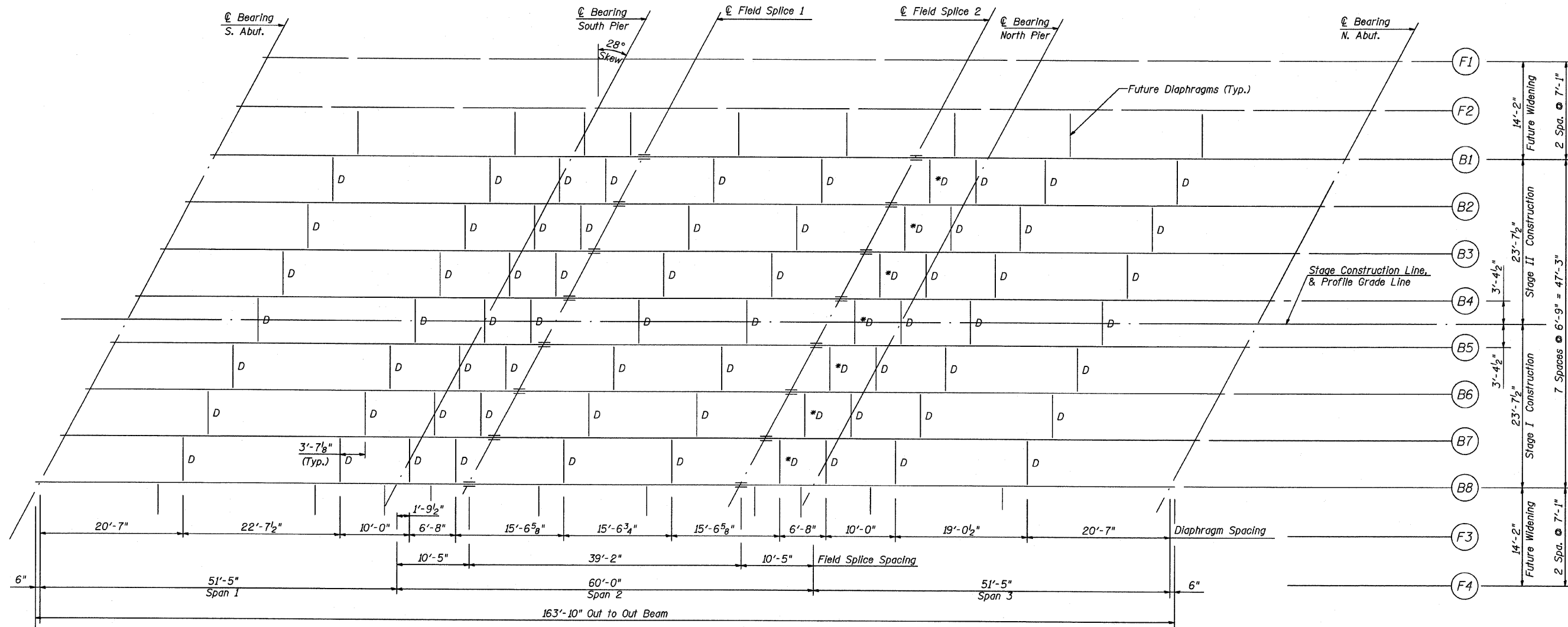


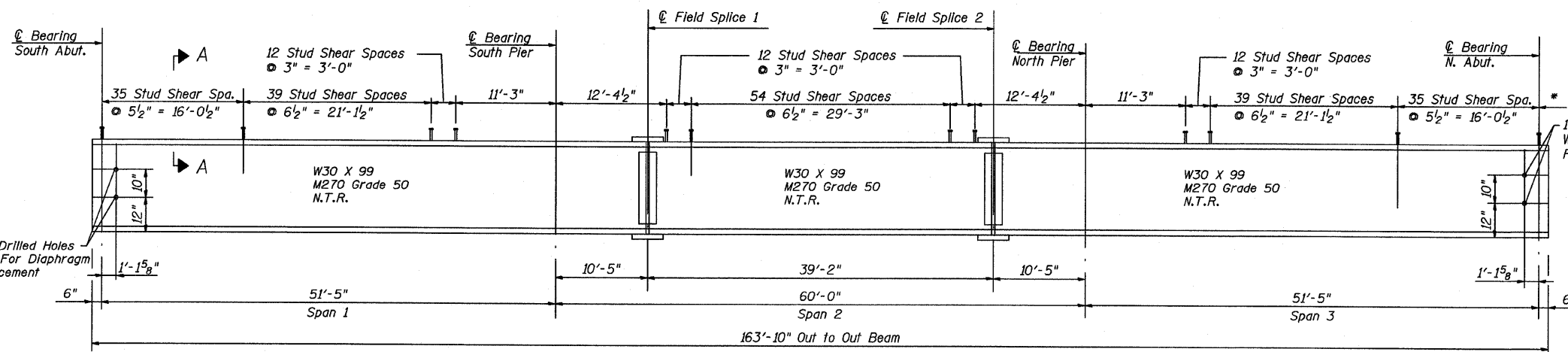
STATE OF ILLINOIS
DEPARTMENT OF TRANSPORTATION

F.A.U. RTE.	SECTION	COUNTY	TOTAL SHEETS	SHEET NO.
2843	3249B-F	COOK	22	13
FED. ROAD DIST. NO.	ILLINOIS	FED. AID PROJECT-		
			Sheet 11 of 22 Contract No. 60119	



FRAMING PLAN

*D - Place Diaphragms at Center of Higher Beam



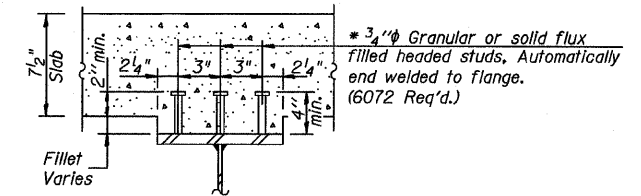
ELEVATION

Components designated "N.T.R." shall conform to the supplemental requirements for notch toughness, Zone 2.

All Steel Beams Shall be M270 Grade 50

Note:

D1 - Denotes Location of Future Diaphragms



SECTION A-A

* Shear studs shown in section A-A and spacing shown in Elevation are not part of this contract and are shown for information only.

REVISIONS	
NAME	DATE

FRAMING PLAN AND BEAM ELEVATION

DIXIE HIGHWAY OVER
BUTTERFIELD CREEK
F.A.U. ROUTE 2843 SECTION 3249B-F
STA. 78+55.00
COOK COUNTY
STRUCTURE NUMBER 016-7946 - PROPOSED
016-0775 - EXISTING

SCALE: NOT-TO-SCALE
DATE 7-10-09

DRAWN BY TH
DESIGNED BY TH
CHECKED BY MF

RME Rubinos & Mesia Engineers, Inc.

\$FILES \$DATE \$TIME \$PENTELS \$PLTDVMS