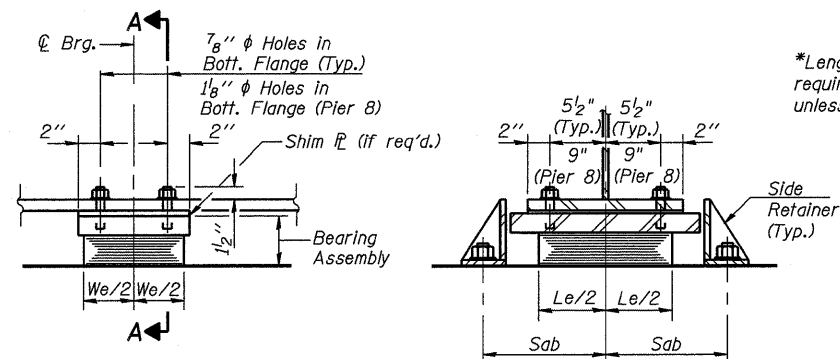


F.A.P.	SECTION	COUNTY	TOTAL SHEETS	SHEET NO.
330	465 (HB&VB) F	COOK	31	30
STA. 173+50 TO STA. 195+00		FED. ROAD DIST. NO. 7 ILLINOIS FED. AID PROJECT		
Contract # 60I21		SHEET NO. S 29 of 530		

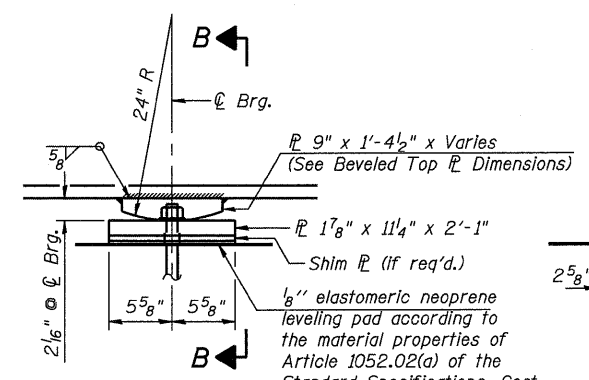


*Lengths shown are minimum required embedment lengths, unless specified by supplier.

Piers 1, 2, 4, 5, 10, 12, & 13
 1" ϕ x 12" * Anchor Bolts (ASTM F1554 Grade 105) with 2 1/4" x 2 1/4" x 5/16" ϕ washer under nut.
 Pier 8
 1 1/2" ϕ x 18" * Anchor Bolts (ASTM F1554 Grade 105) with 3" x 3" x 5/16" ϕ washer under nut.

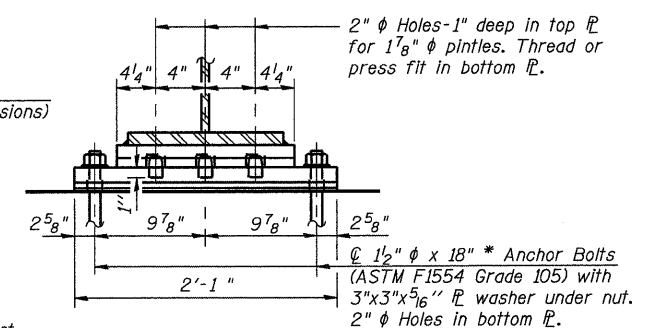
ELEVATION SECTION A-A

TYPE I ELASTOMERIC EXP. BRGS. AT PIERS 1, 2, 4, 5, 8, 10, 12 & 13



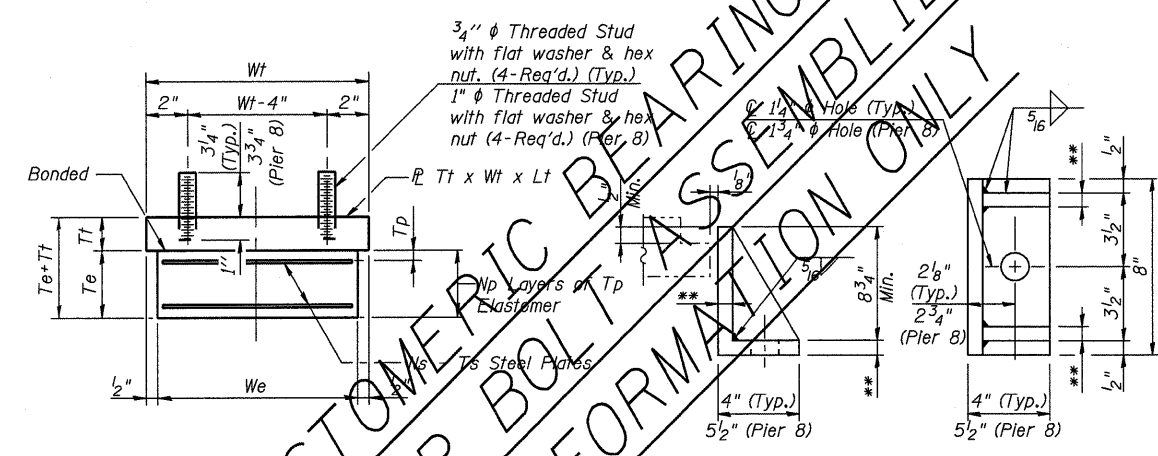
ELEVATION

FIXED BEARING AT PIERS 3 & 11
(24 Req'd.)



SECTION B-B

*Lengths shown are minimum required embedment lengths, unless specified by supplier.



BEARING ASSEMBLY

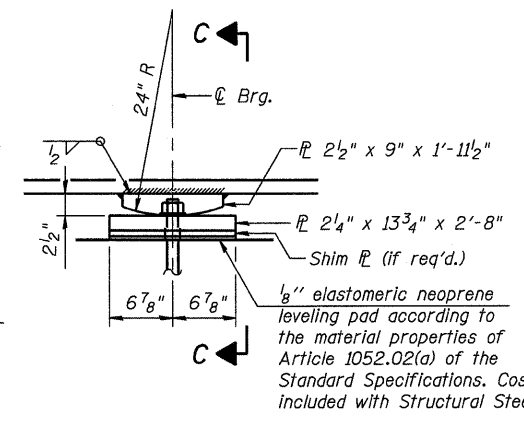
SIDE RETAINER

Equivalent rolled angle with stiffeners will be allowed in lieu of welded plates.
 **Thickness = 1/2" (Typ.) & 5/8" (Pier 8)

Note: Shim plates shall not be placed under Bearing Assembly.

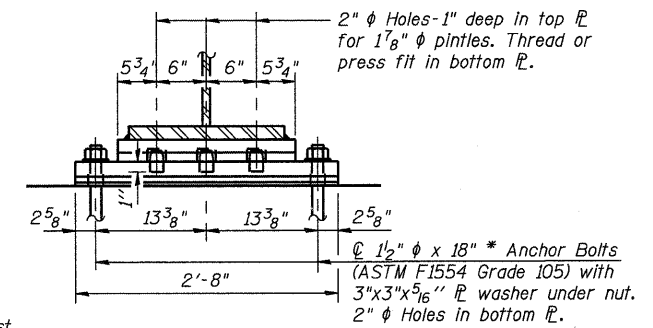
TYPE I BEARING DIMENSIONS

Location	We	Le	TP	Np	Ts	Ns	Te	Tt	Wt	Lt	Sab
Piers 1, 5, & 13	14"	22"	1/2"	7	3/16"	6	5 15/16"	2 1/8"	15"	24"	14 1/4"
Piers 2, 4, 10, & 12	15"	24"	3/4"	4	3/16"	3	3 3/16"	Varies	16"	26"	15 1/4"
Pier 8 (Girders 1-6)	17"	28"	7/8"	4	1/4"	3	4 1/4"	2 1/8"	18"	30"	17 1/8"
Pier 8 (Girders 7-12)	19"	32"	1"	4	1/4"	3	4 3/4"	3 1/4"	20"	34"	19 1/8"



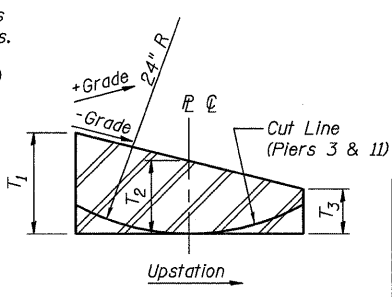
ELEVATION

FIXED BEARING AT PIER 7
(12 Req'd.)



SECTION C-C

*Lengths shown are minimum required embedment lengths, unless specified by supplier.

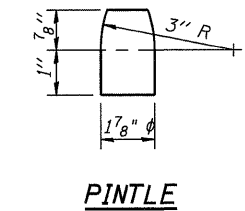


BEVELED TOP ϕ DETAIL

Cut Line only applicable to the fixed bearings at Piers 3 & 11.

BEVELED TOP ϕ DIMENSIONS

Location	Grade	T1	T2	T3
Pier 2	3.88%	3"	3 3/8"	3 5/8"
Pier 3	3.88%	1 1/8"	2 1/8"	2 1/4"
Pier 4	3.40%	3"	3 1/4"	3 1/2"
Pier 10	-2.69%	3 1/2"	3 1/4"	3"
Pier 11	-3.68%	2 1/4"	2 1/8"	1 1/8"
Pier 12	-3.98%	3 5/8"	3 3/8"	3"



PINTLE

BEARING SEAT ELEVATIONS

Girder No.	S. Abut.	Pier 1	Pier 2	Pier 3	Pier 4	Pier 5	Pier 6-S	Pier 6-N	Pier 7	Pier 8	Pier 9-S	Pier 9-N	Pier 10	Pier 11	Pier 12	Pier 13	N. Abut.
1	657.56	659.70	663.24	666.85	669.89	672.30	673.55	671.73	673.80	673.30	672.04	673.80	671.99	669.19	665.23	661.29	659.50
2	657.73	659.87	663.41	667.02	670.06	672.47	673.72	671.90	673.94	673.52	672.21	673.97	672.16	669.36	665.40	661.46	659.67
3	657.90	660.04	663.58	667.19	670.23	672.64	673.89	672.07	674.09	673.73	672.38	674.14	672.33	669.53	665.57	661.63	659.84
4	658.07	660.21	663.75	667.36	670.40	672.81	674.06	672.24	674.23	673.94	672.55	674.31	672.50	669.70	665.74	661.80	660.01
5	658.24	660.38	663.92	667.53	670.57	672.98	674.23	672.41	674.37	674.15	672.72	674.48	672.67	669.87	665.91	661.97	660.18
6	658.41	660.55	664.09	667.70	670.74	673.15	674.40	672.58	674.50	674.36	672.89	674.65	672.84	670.04	666.08	662.14	660.35
7	658.41	660.55	664.09	667.70	670.74	673.15	674.40	672.66	674.47	674.32	672.80	674.65	672.84	670.04	666.08	662.14	660.35
8	658.24	660.38	663.92	667.53	670.57	672.98	674.23	672.49	674.26	674.18	672.63	674.48	672.67	669.87	665.91	661.97	660.18
9	658.07	660.21	663.75	667.36	670.40	672.81	674.06	672.32	674.05	674.04	672.46	674.31	672.50	669.70	665.74	661.80	660.01
10	657.90	660.04	663.58	667.19	670.23	672.64	673.89	672.15	673.83	673.89	672.29	674.14	672.33	669.53	665.57	661.63	659.84
11	657.73	659.87	663.41	667.02	670.06	672.47	673.72	671.98	673.62	673.75	672.12	673.97	672.16	669.36	665.40	661.46	659.67
12	657.56	659.70	663.24	666.85	669.89	672.30	673.55	671.81	673.40	673.58	671.95	673.80	671.99	669.19	665.23	661.29	659.50

BILL OF MATERIAL

Item	Unit	Total
Elastomeric Bearing Assembly Type I	Each	96
Anchor Bolts 1"	Each	168
Anchor Bolts 1 1/2"	Each	96

ILLINOIS DEPARTMENT OF TRANSPORTATION
BEARING DETAILS I
 FAP 330 US 12/45 (MANNHEIM RD.) OVER
 500 LINE RR & FRANKLIN AVE.
 STRUCTURE NO. 016-2815
 SECTION 465 (HB & VB) F COOK COUNTY
 STA. 183+33.30 DRAWN BY JHR
 DATE 6/2009 CHECKED BY CLS

EARTH TECH | AECOM