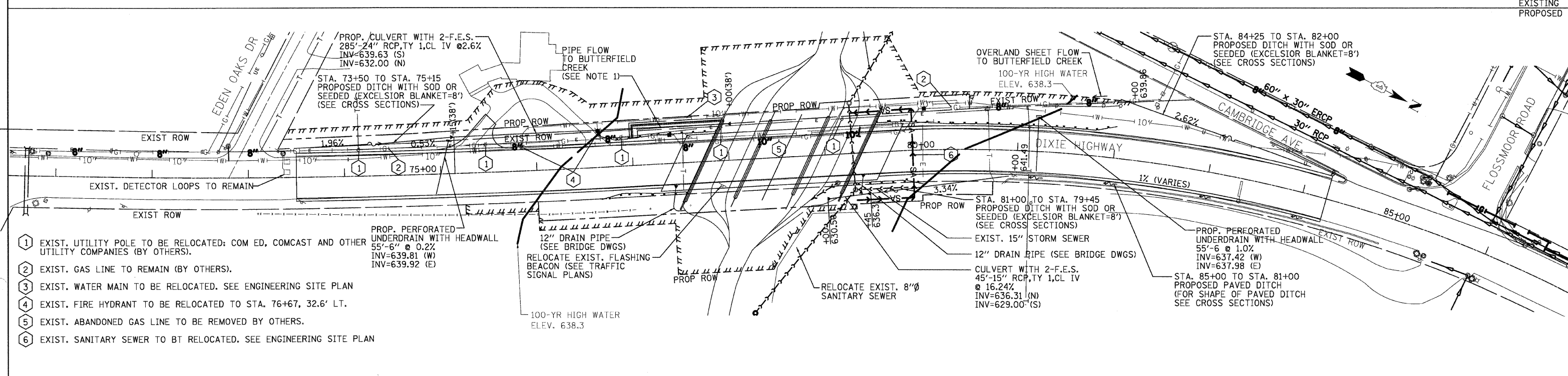
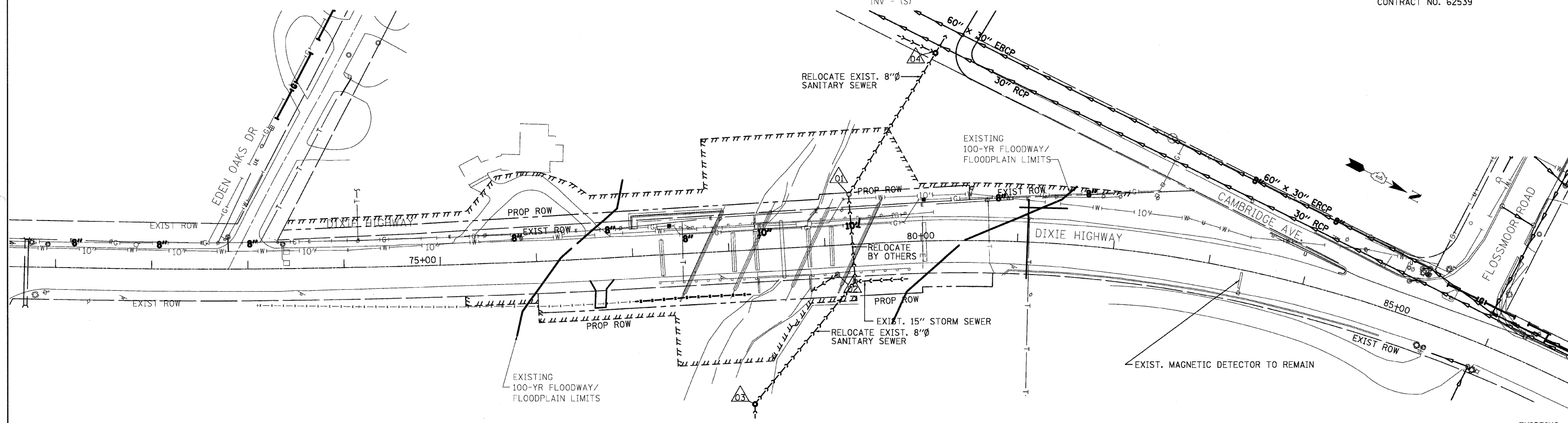


F.A.U. RTE.	SECTION	COUNTY	TOTAL SHEETS	SHEET NO.
2843	3249B-R	COOK	64	13
STA. _____ TO STA. _____		FED. ROAD DIST. NO. - ILLINOIS FED. AID PROJECT		
CONTRACT NO. 62539				

- 01 EXIST. SANITARY MH-1 (TO BE REMOVED BY OTHERS)
RIM 634.89
INV 628.98(E) 10", INV 626.69(W) 10"
(8" ABS SEWER WITH 18" STEEL CASING PIPE BETWEEN MH-1 & MH-2 PER VILLAGE ATLAS)
- 02 EXIST. SANITARY MH-2 (TO BE REMOVED BY OTHERS)
RIM 636.36
INV 631.74(E) 15"
INV 631.79(W) 15"
- 03 (LOCATED BY ATLAS, NOT SURVEY)
EXIST. SANITARY MH-3 (TO REMAIN)
RIM 634.9+
INV - (E), INV - (W)
- 04 (LOCATED BY ATLAS, NOT SURVEY)
EXIST. SANITARY MH-4 (TO REMAIN)
RIM -
INV - (E)
INV - (W)
INV - (S)



- 1 EXIST. UTILITY POLE TO BE RELOCATED: COM ED, COMCAST AND OTHER UTILITY COMPANIES (BY OTHERS).
- 2 EXIST. GAS LINE TO REMAIN (BY OTHERS).
- 3 EXIST. WATER MAIN TO BE RELOCATED. SEE ENGINEERING SITE PLAN
- 4 EXIST. FIRE HYDRANT TO BE RELOCATED TO STA. 76+67, 32.6' LT.
- 5 EXIST. ABANDONED GAS LINE TO BE REMOVED BY OTHERS.
- 6 EXIST. SANITARY SEWER TO BE RELOCATED. SEE ENGINEERING SITE PLAN

NOTE

- THE 24" RCP PIPE WILL REQUIRE AN 18" CLEAR DISTANCE TO THE PILES UNDER ABUTMENT. CONTRACTOR TO COORDINATE THIS EFFORT. (SEE BRIDGE DRAWINGS)
- ALL TREE REMOVAL SHALL BE DONE BEFORE UTILITY POLE RELOCATION.

○ POLE LOCATIONS SHOWN PER COMED PERMIT DRAWING.



REVISIONS	
NAME	DATE

ILLINOIS DEPARTMENT OF TRANSPORTATION
F.A.U. 2843 DIXIE HIGHWAY
OVER BUTTERFIELD CREEK
DRAINAGE AND UTILITIES

SCALE: VERT. 1"=50'
HORIZ. 1"=50'
DATE 6-25-09

DRAWN BY AW
DESIGNED BY AW
CHECKED BY MF