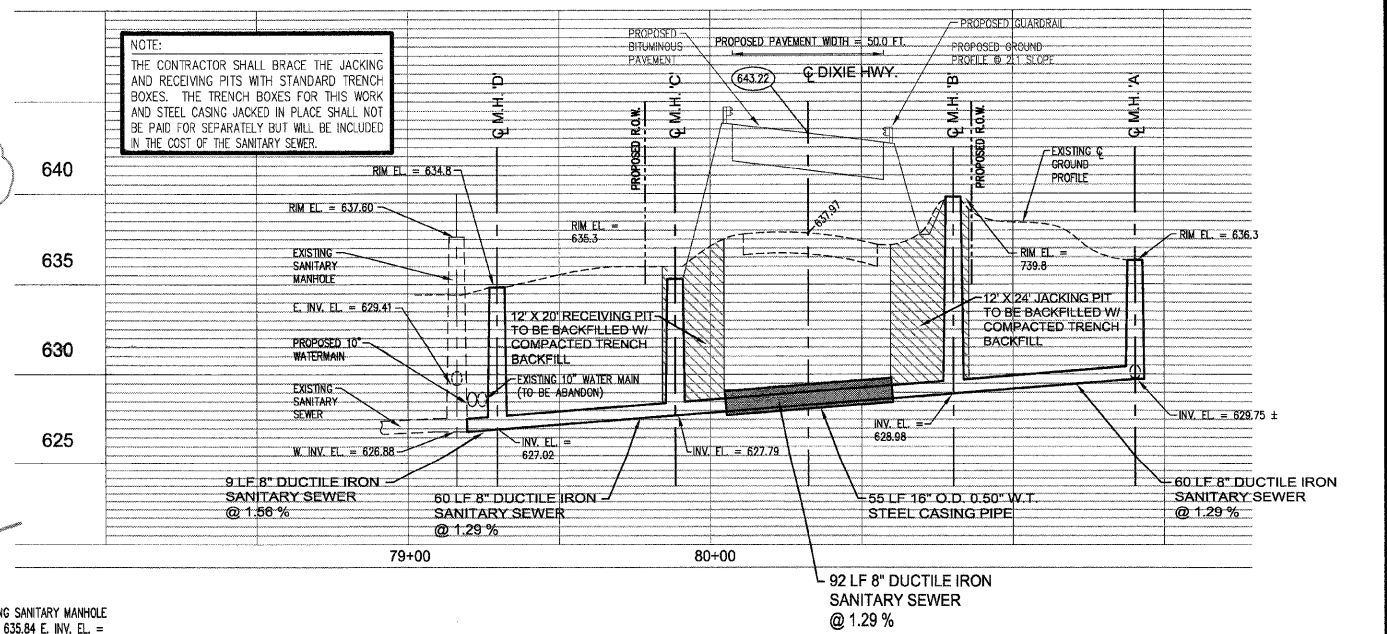
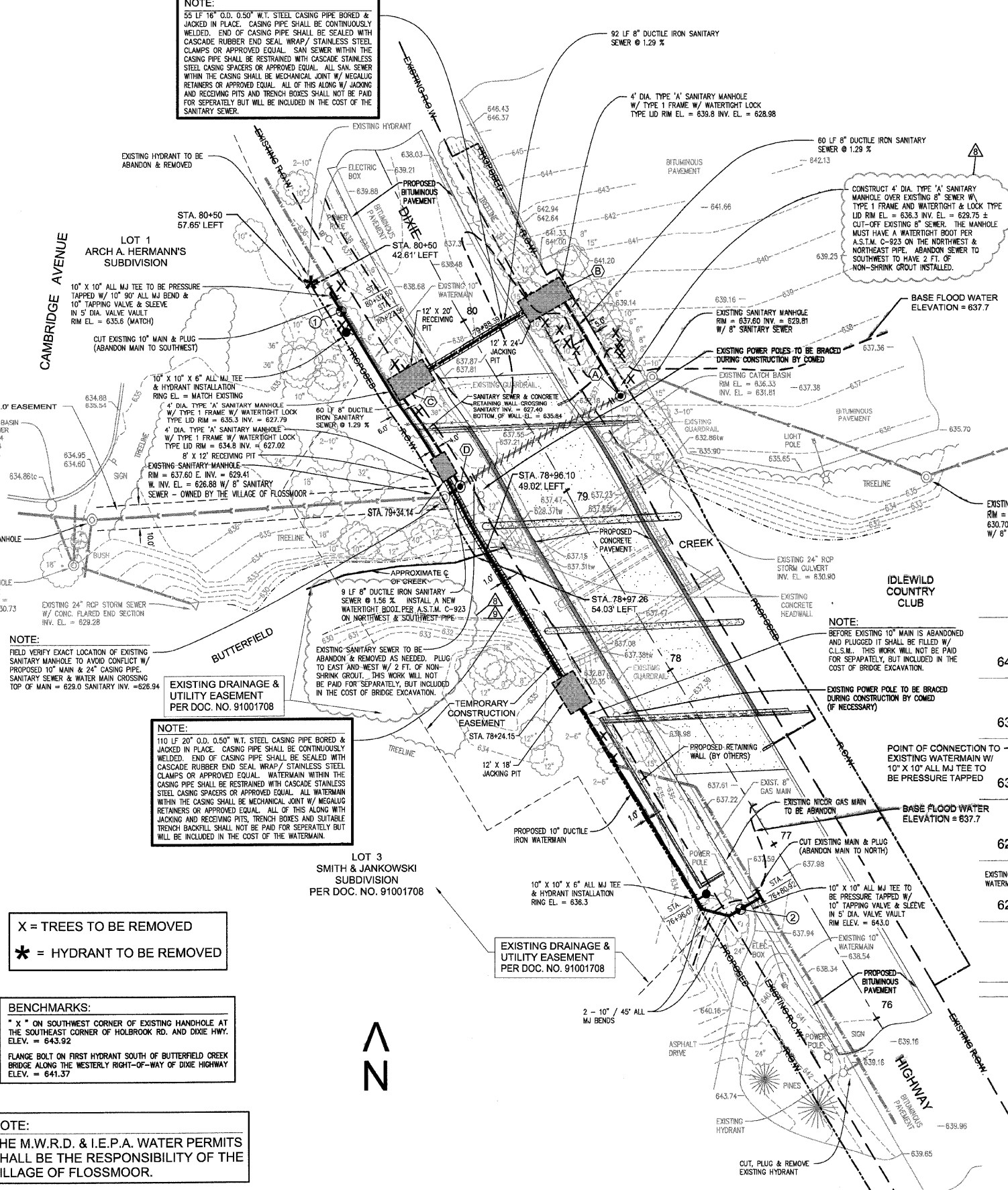
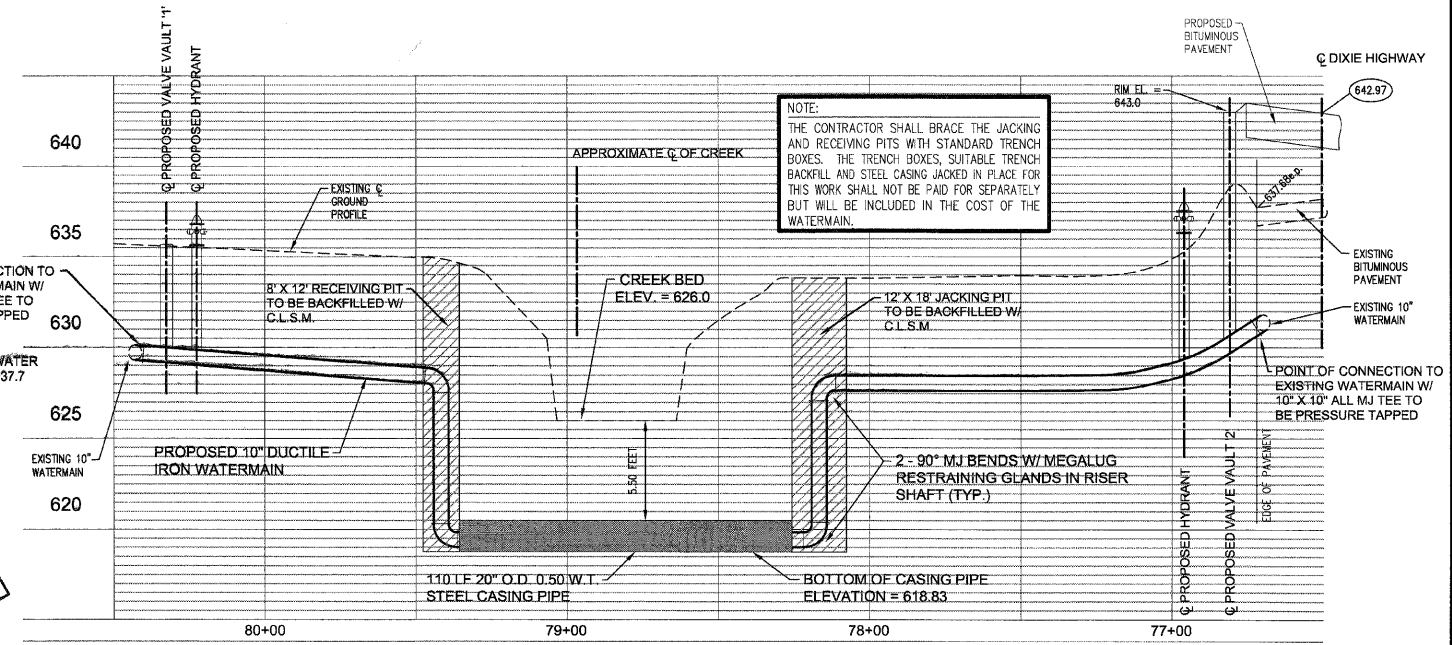


**NOTE:**  
 55 LF 16" O.D. 0.50" W.T. STEEL CASING PIPE BORED & JACKED IN PLACE. CASING PIPE SHALL BE CONTINUOUSLY WELDED. END OF CASING PIPE SHALL BE SEALED WITH CASCADE RUBBER END SEAL WRAP / STAINLESS STEEL CLAMPS OR APPROVED EQUAL. SAN SEWER WITHIN THE CASING PIPE SHALL BE RESTRAINED WITH CASCADE STAINLESS STEEL CASING SPACERS OR APPROVED EQUAL. ALL SAN SEWER WITHIN THE CASING SHALL BE MECHANICAL JOINT W/ MEGALUG RETAINERS OR APPROVED EQUAL. ALL OF THIS ALONG W/ JACKING AND RECEIVING PITS AND TRENCH BOXES SHALL NOT BE PAID FOR SEPARATELY BUT WILL BE INCLUDED IN THE COST OF THE SANITARY SEWER.

**NOTE:**  
 THE CONTRACTOR SHALL BRACE THE JACKING AND RECEIVING PITS WITH STANDARD TRENCH BOXES. THE TRENCH BOXES FOR THIS WORK AND STEEL CASING JACKED IN PLACE SHALL NOT BE PAID FOR SEPARATELY BUT WILL BE INCLUDED IN THE COST OF THE SANITARY SEWER.



**PROPOSED SANITARY SEWER PROFILE**



**PROPOSED WATERMAIN PROFILE**

**NOTE:**  
 FIELD VERIFY EXACT LOCATION OF EXISTING SANITARY MANHOLE TO AVOID CONFLICT W/ PROPOSED 10\"/>

**NOTE:**  
 110 LF 20\"/>

X = TREES TO BE REMOVED  
 \* = HYDRANT TO BE REMOVED

**BENCHMARKS:**  
 \* X \* ON SOUTHWEST CORNER OF EXISTING HANDHOLE AT THE SOUTHEAST CORNER OF HOLBROOK RD. AND DIXIE HWY. ELEV. = 643.92  
 FLANGE BOLT ON FIRST HYDRANT SOUTH OF BUTTERFIELD CREEK BRIDGE ALONG THE WESTERLY RIGHT-OF-WAY OF DIXIE HIGHWAY ELEV. = 641.37

**NOTE:**  
 THE M.W.R.D. & I.E.P.A. WATER PERMITS SHALL BE THE RESPONSIBILITY OF THE VILLAGE OF FLOSSMOOR.

**PROPOSED UTILITIES LEGEND**  
 (A) = PROPOSED SANITARY MANHOLE IDENTIFICATION LETTER  
 (1) = PROPOSED VALVE VAULT IDENTIFICATION NUMBER

**NOTE:**  
 BEFORE EXISTING 10\"/>

**NOTE:**  
 THE CONTRACTOR SHALL BRACE THE JACKING AND RECEIVING PITS WITH STANDARD TRENCH BOXES. THE TRENCH BOXES, SUITABLE TRENCH BACKFILL AND STEEL CASING JACKED IN PLACE FOR THIS WORK SHALL NOT BE PAID FOR SEPARATELY BUT WILL BE INCLUDED IN THE COST OF THE WATERMAIN.

NO.	DATE	BY	DESCRIPTION
7	11/12/08	EGH	PER M.W.R.D. REVIEW
8	11/24/08	EGH	PER M.W.R.D. REVIEW
9	11/24/08	JJF	PER M.W.R.D. REVIEW
10	12/01/08	EGH	PER M.W.R.D. REVIEW
11	2/05/09	EGH	FOR CONSTRUCTION ISSUE
12	7/08/09	EGH	FOR CONSTRUCTION ISSUE

DESIGNED BY: RWM  
 DRAWN BY: EGH  
 CHECKED BY: RWM

**REVISIONS**

ILLINOIS PROFESSIONAL DESIGN FIRM NO. 184-002235

**TECH 3 Consulting Group, Inc.**

ENGINEERS SURVEYORS  
 737 West Exchange St. Crete, IL 60417  
 ph 708.672.4994 fax 708.672.3739



Village of Flossmoor  
 Flossmoor, Illinois

**IDOT DIXIE BRIDGE RECONSTRUCTION  
 UTILITY LOCATION  
 ENGINEERING SITE PLAN**

DATE: JANUARY 16, 2008 SCALE: 1" = 30' JOB NO. 06702

**C-1**

TECH 3 CONSULTING GROUP, INC. ASSUMES NO LIABILITY FOR THE CORRECTNESS OR ACCURACY OF THESE PLANS UNLESS AN ORIGINAL SIGNATURE AND SEAL OF A REGISTERED PROFESSIONAL ENGINEER EMPLOYED BY THE CORPORATION ARE AFFIXED TO THESE PLANS.  
 DATED THIS 15th DAY OF JANUARY, 2008  
 LICENSE EXPIRES 12/31/2009