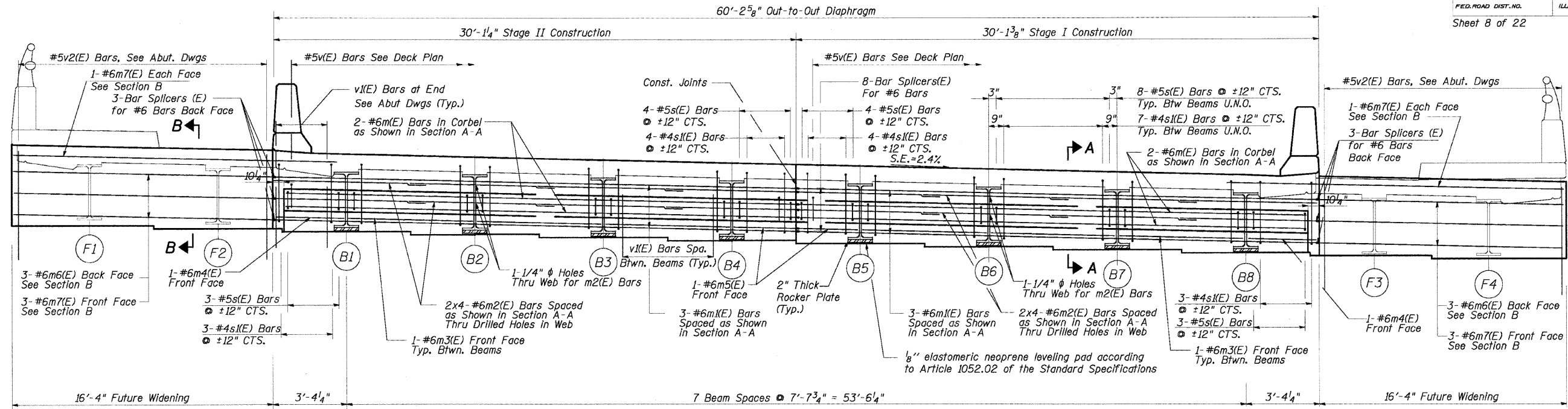


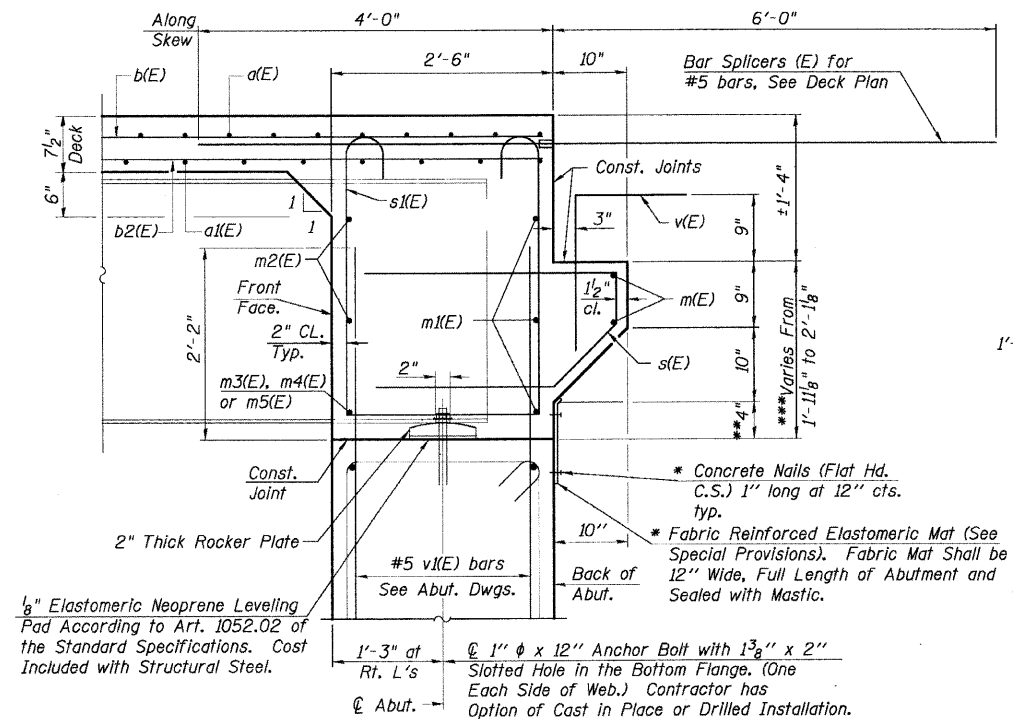
STATE OF ILLINOIS  
DEPARTMENT OF TRANSPORTATION

F.A.R.T.E.	SECTION	COUNTY	TOTAL SHEETS	SHEET NO.
2843	3249B-R	COOK	64	32

FED. ROAD DIST. NO. ILLINOIS FED. AID PROJECT-  
Sheet 8 of 22 Contract No. 62539

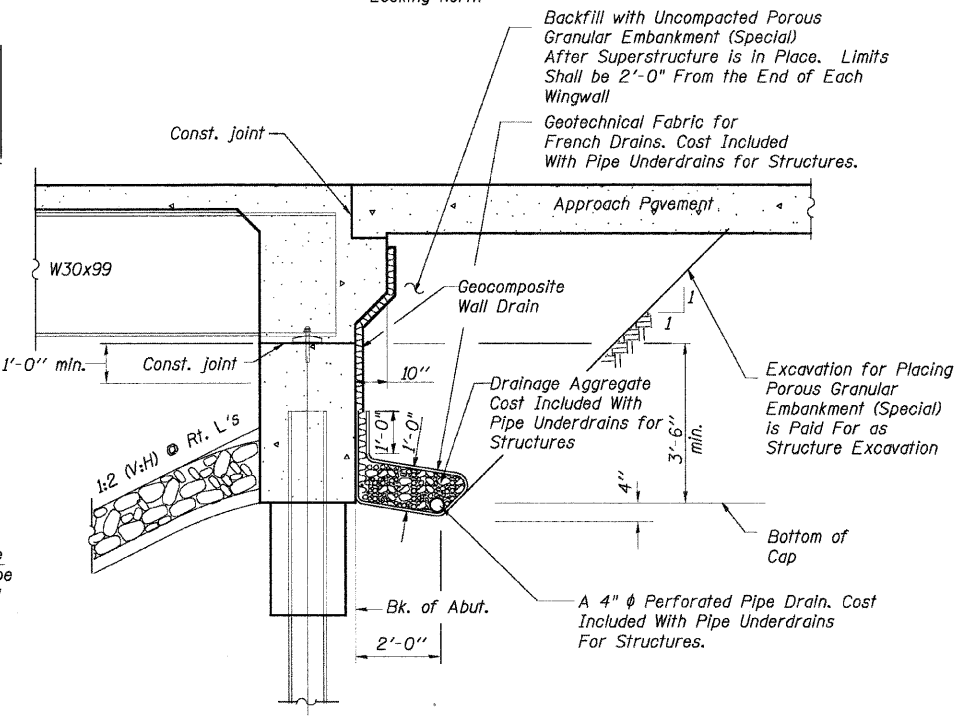


DIAPHRAGM ELEVATION AT ABUTMENT



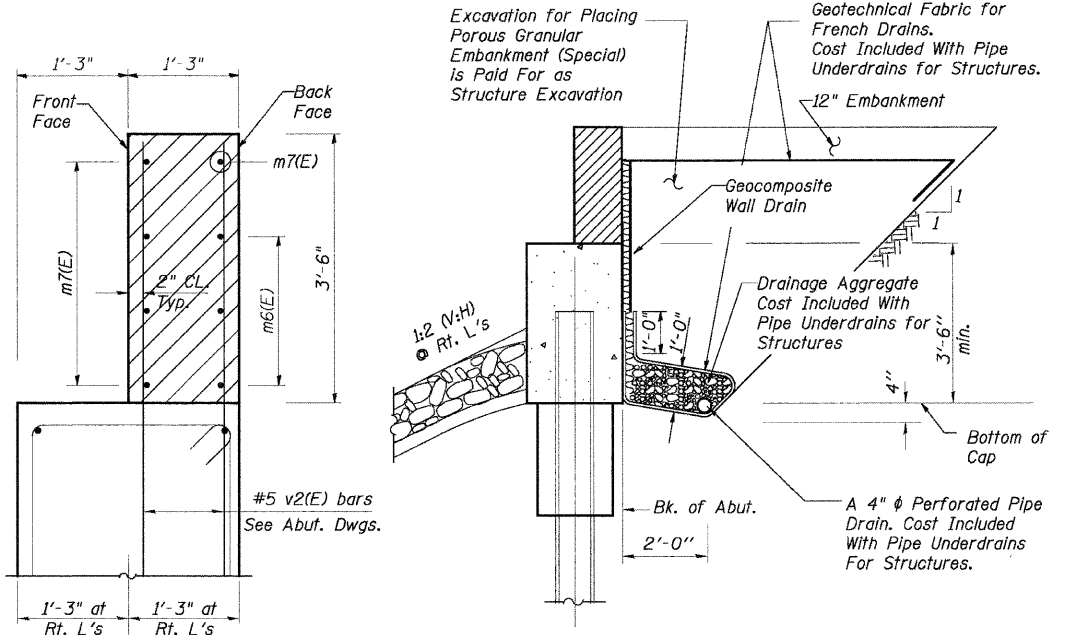
SECTION A-A

Dimensions at right angles to abutment, except as shown.  
\* Cost included with Concrete Superstructure.  
\*\*4 1/8" at Centerline of Beam  
\*\*\*2'-0 1/8" at Centerline of Beam



SECTION THRU ABUTMENT DRAIN

(Horiz. dim. @ Rt. L's)



SECTION B-B

Hatching Indicates Backwall Over Abutment for Interim Conditions

SECTION THRU ABUTMENT DRAIN

(Horiz. dim. @ Rt. L's)  
At Southwest Quadrant, Adjacent to Retaining Wall

Notes:  
Reinforcement bars in Diaphragm are Billed With Superstructure on Sheet 10 of 22.  
Concrete in Diaphragm is Included with Concrete Superstructure on Sheet 7 of 22.  
For Details of Bars s(E) & s(E) See Sheet 10 of 22.  
The s(E) and s(E) Bars Shall Be Placed Parallel to the Beams. Spacing for These Bars Shall be at Right Angles to the Beams.  
For Anchor Bolt Details, See Sheet 19 of 22.

MIN. BAR LAP  
#6 bar = 2'-9"

Note:  
All drainage components shall extend to 2'-0" from the end of each wingwall except an outlet pipe shall extend until intersecting with side slopes. (See Article 601.05 of the Standard Specifications and Highway Standard 601101)

REVISIONS	
NAME	DATE

DIAPHRAGM ELEVATION.  
SECTIONS & DRAIN DETAIL

DIXIE HIGHWAY OVER  
BUTTERFIELD CREEK  
F.A.U. ROUTE 2843 SECTION 3249B-R  
STA. 78+55.00  
COOK COUNTY  
STRUCTURE NUMBER 016-7946

SCALE: NOT-TO-SCALE  
DATE 6-25-09

DRAWN BY BV  
DESIGNED BY BS  
CHECKED BY PK



SPENT B.S.S.  
SPENT DRVS

FILES  
DATE  
TIME