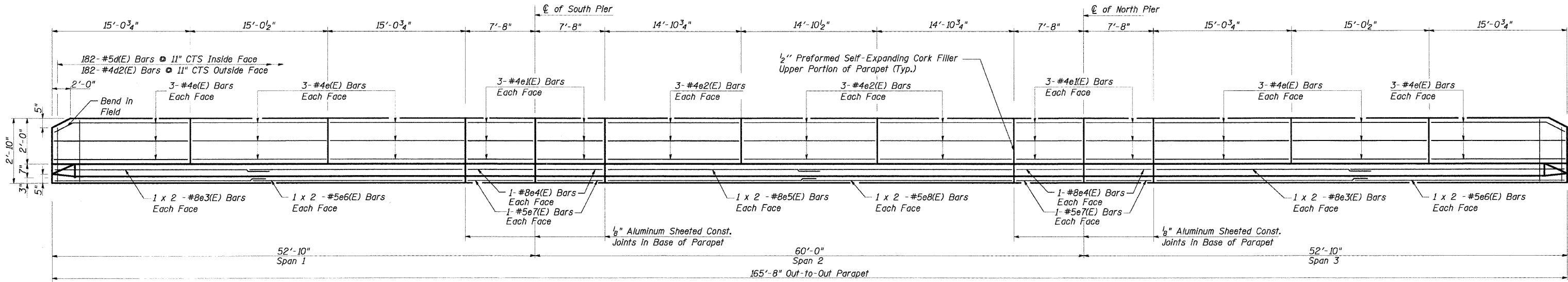
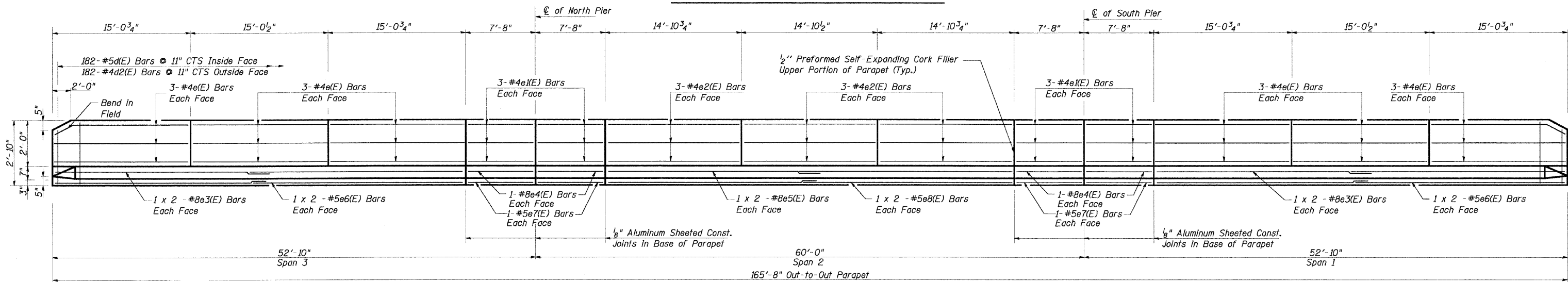


STATE OF ILLINOIS  
DEPARTMENT OF TRANSPORTATION

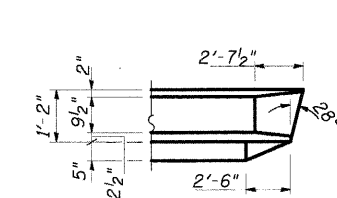
F.A.R.T.E.	SECTION	COUNTY	TOTAL SHEETS	SHEET NO.
2843	3249B-R	COOK	64	33
FED. ROAD DIST. NO.	ILLINOIS	FED. AID PROJECT		
			Sheet 9 of 22	Contract No. 62539



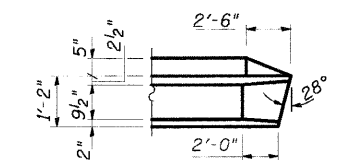
INSIDE ELEVATION OF WEST PARAPET



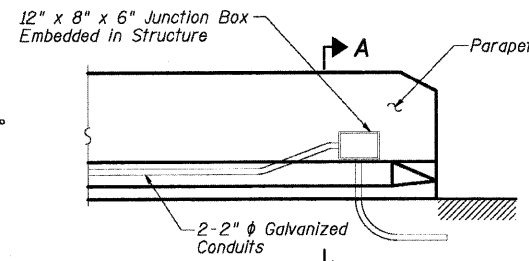
INSIDE ELEVATION OF EAST PARAPET



PARAPET DETAIL 1



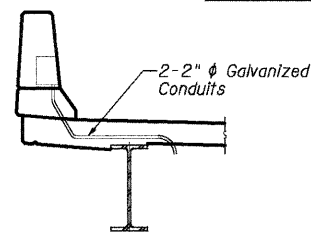
PARAPET DETAIL 2



JUNCTION BOX EMBEDDED  
IN PARAPET

Notes:

1. The Junction Box Shall Only be Installed when Indicated on the Plans or as Directed by the Engineer to Facilitate the Installation of Unit Duct into the Conduit Embedded in the Parapet.
2. The Junction Box Shall be Paid for at the Unit Price for Junction Box, Embedded in Structure, 12" x 8" x 6"
3. The Exact Location of the Junction Box Shall be Determined by the Engineer.



SECTION A-A

Notes: See Sheet #10 of 22 for Superstructure Details and Bill of Material.

Reinforcement bars designated (E) shall be epoxy coated.

Bars Indicated thus 1 x 2-#8 etc. Indicates 1 Line of Bars With 2 Lengths per Line.

Minimum Bar Lap For #4 Bar - 1'-8".

Minimum Bar Lap For #5 Bar - 2'-2".

Minimum Bar Lap For #8 Bar - 4'-6".

For Deck Diaphragm, See Sht #8 of 22.

REVISIONS	
NAME	DATE

PARAPET ELEVATION

DIXIE HIGHWAY OVER  
BUTTERFIELD CREEK  
F.A.U. ROUTE 2843 SECTION 3249B-R  
STA. 78+55.00  
COOK COUNTY  
STRUCTURE NUMBER 016-7946

SCALE: NOT-TO-SCALE  
DATE 6-25-09

DRAWN BY BY  
DESIGNED BY BS  
CHECKED BY PK

**RME** Rubinos &  
Mesia  
Engineers, Inc.

PENTON

PENTON