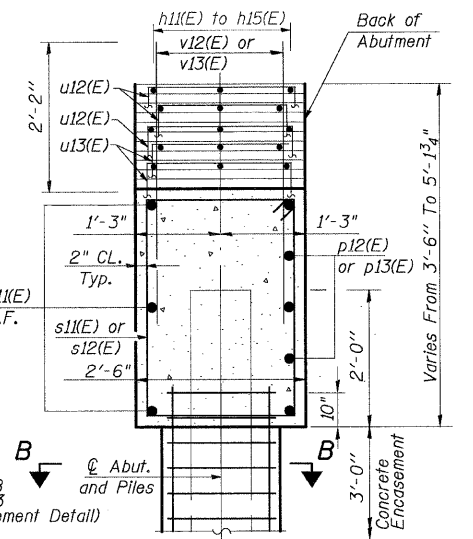
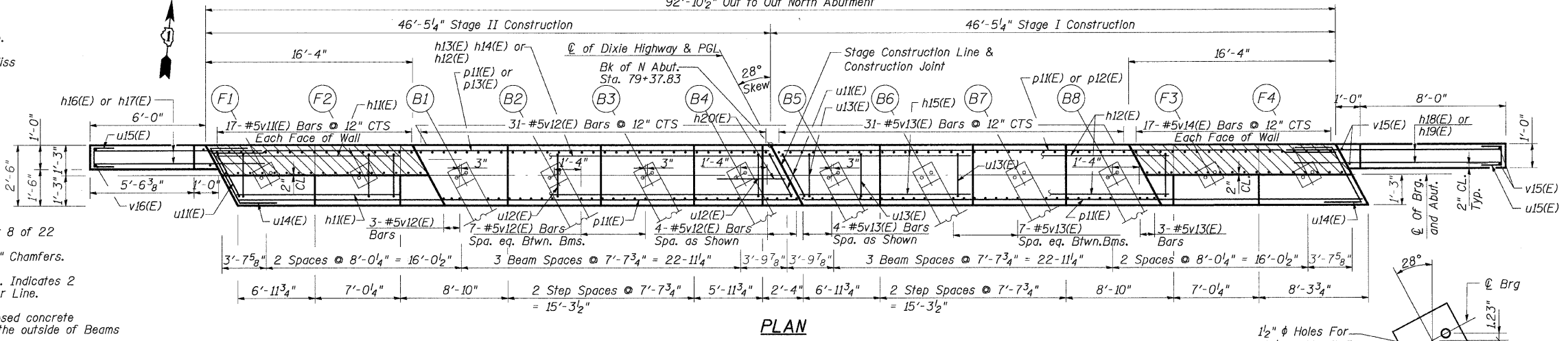


STATE OF ILLINOIS
DEPARTMENT OF TRANSPORTATION

F.A.R.T.E.	SECTION	COUNTY	TOTAL SHEETS	SHEET NO.
2843	3249B-R	COOK	64	39
FED. ROAD DIST. NO.	ILLINOIS	FED. AID PROJECT	Contract No. 62539	
Sheet 15 of 22				

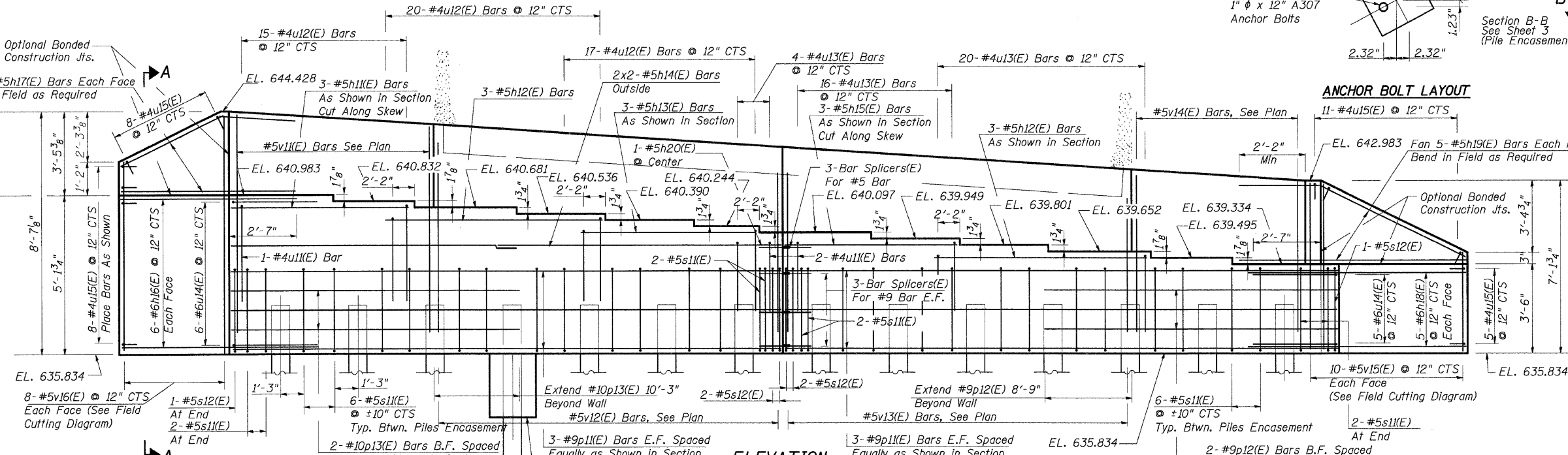
Notes:
 Pour Steps Monolithically With Cap.
 Space Reinforcement in Cap to Miss Anchor Bolts.
 Hatched Area Denotes Temporary Concrete Wall

For Diaphragm Details, See Sheet 8 of 22
 All Edges Shall Have Standard 3/4" Chamfers.
 Bars Indicated Thus 2x2-#5 etc. Indicates 2 Lines of Bars With 2 Lengths Per Line.
 Apply Concrete Sealer to all exposed concrete surfaces of abutment located to the outside of Beams B1 & B8.



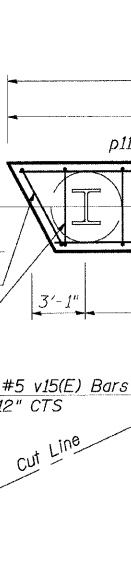
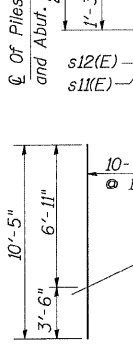
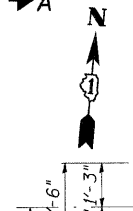
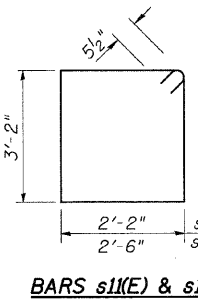
SECTION THRU N. ABUT.
N. ABUT. BILL OF MATERIAL

Bar	No.	Size	Length	Shape
h11(E)	3	#5	15'-1"	
h12(E)	6	#5	18'-8"	
h13(E)	3	#5	15'-10"	
h14(E)	4	#5	24'-4"	
h15(E)	3	#5	15'-9"	
h16(E)	12	#6	9'-1"	
h17(E)	10	#5	9'-1"	
h18(E)	10	#6	11'-7"	
h19(E)	10	#5	11'-10"	
h20(E)	1	#5	4'-6"	
p11(E)	12	#9	46'-3"	
p12(E)	2	#9	25'-1"	
p13(E)	2	#10	26'-7"	
s11(E)	80	#5	11'-7"	
s12(E)	6	#5	12'-3"	
u11(E)	3	#4	8'-5"	
u12(E)	52	#4	8'-1"	
u13(E)	40	#4	6'-3"	
u14(E)	11	#6	7'-8"	
u15(E)	32	#4	2'-2"	
v11(E)	34	#5	7'-4"	
v12(E)	59	#5	6'-0"	
v13(E)	59	#5	5'-1"	
v14(E)	34	#5	6'-0"	
v15(E)	10	#5	10'-5"	
v16(E)	8	#5	14'-5"	
Reinforcement Bars, Epoxy Coated	Pound		6,300	
Concrete Structures	Cu. Yds.		42	
Bar Splicers	Each		9	
Furnishing Steel Piles HP12x74	Foot		590	
Driving Piles	Foot		590	
Test Pile Steel, HP12x74	Each		1	
Pile Shoes	Each		13	
Structure Excavation	Cu. Yd.		15	
Concrete Sealer	Sq. Ft.		520	
Concrete Encasement	Cu. Yds.		5	



SECTION A-A

PILE DATA
 Type: HP12x74
 Nominal Required Bearing: 589 Kips
 Allowable Resistance Available: 196 Kips
 Est. Total Length: 45'-0"
 No. Required: 13 + 1 Test Pile
 Negative Skin Friction: 30 Kips/Pile
 Provide Pile Shoes for all Piles



ELEVATION (Looking North)

PILE LAYOUT

LEGEND
 [Hatched Area] Indicates Temporary Wall
 B.F. Indicates Back Face of Abutment
 E.F. Indicates Each Face of Abutment

REVISIONS	
NAME	DATE

NORTH ABUTMENT

DIXIE HIGHWAY OVER
BUTTERFIELD CREEK
F.A.U. ROUTE 2843 SECTION 3249B-R
STA. 78+55.00
COOK COUNTY
STRUCTURE NUMBER 016-7946

SCALE: NOT-TO-SCALE
DATE 6-25-09

DRAWN BY BS
DESIGNED BY PK
CHECKED BY PK

RME Rubinos & Mesia Engineers, Inc.

\$PENTBLSP \$PLTDAYS\$ \$FILES\$ \$DATE\$ \$TIME\$