

F.A.U. RTE.	SECTION	COUNTY	TOTAL SHEETS	SHEET NO.
2578	532B-1	DUPAGE	117	1

*117+3=120

CONTRACT #62881

D-91-397-97



LOCATION OF SECTION INDICATED THUS: - [shaded box] -

STATE OF ILLINOIS
DEPARTMENT OF TRANSPORTATION
DIVISION OF HIGHWAYS

PROPOSED HIGHWAY PLANS

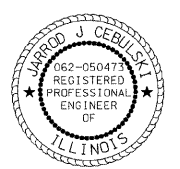
F.A.U. ROUTE 2578 (ILLINOIS ROUTE 53)
OVER SPRING BROOK CREEK
PAVEMENT WIDENING AND RECONSTRUCTION
AND BRIDGE REPLACEMENT
SECTION 532B-1
PROJECT NO. *ACM-2578(005)*
DuPAGE COUNTY
C-91-069-05

FOR INDEX OF SHEETS, SEE SHEET NO. 2
HIGHWAY CLASSIFICATION
MINOR ARTERIAL

DESIGN DESIGNATION
3500(20) ARTERIAL 14.56 (PCC-20)

TRAFFIC DATA
IL RTE 53
2002 ADT = 14,200 - 25,800
2020 ADT = 26,000 - 31,000
POSTED SPEED LIMIT = 40 MPH
DESIGN SPEED = 50 MPH

PROJECT DESCRIPTION
THE PROPOSED IMPROVEMENT CONSISTS OF THE PAVEMENT WIDENING AND RECONSTRUCTION OF ILLINOIS ROUTE 53, STRUCTURE REPLACEMENT (SN:022-0189), NEW STORM SEWER SYSTEM, AND TRAFFIC SIGNAL INSTALLATION.



Jarrod J. Cebulski
JARROD J. CEBULSKI, P.E.
NO. 062-050473
EXP. DATE: 11/30/09
SHEETS: 1-40 AND 81-117



Paul M. Lopez
PAUL M. LOPEZ, P.E., S.E.
NO. 081-005231
EXP. DATE: 11/30/10
SHEETS: 46-67 AND 69-70

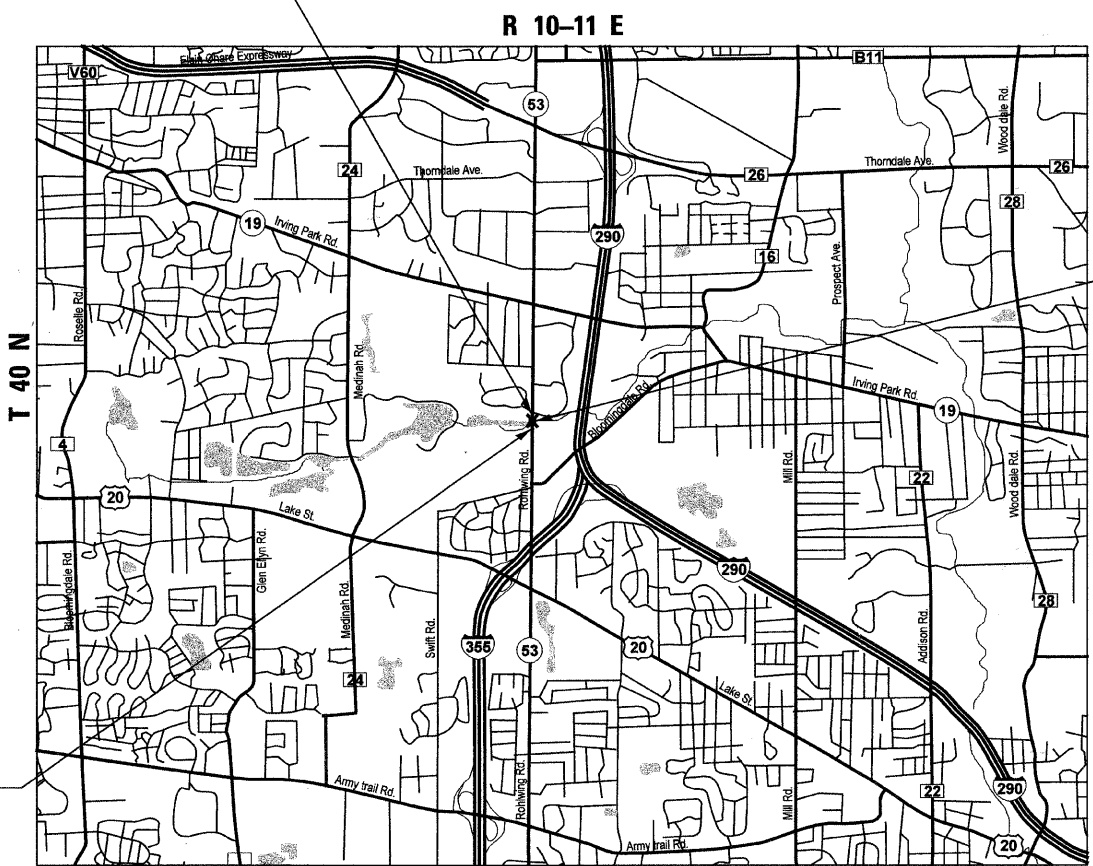


P.K. Gandhi
P.K. GANDHI, P.E.
NO. 062-034993
EXP. DATE: 11/30/09
SHEETS: 41-45



Deborah A. Zroka
DEBORAH A. ZROKA, S.E.
NO. 081-005152
EXP. DATE: 11/30/2010
SHEETS: 68 AND 71-80

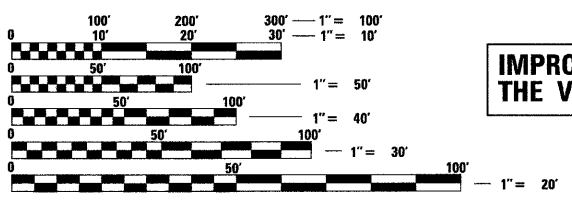
END IMPROVEMENT
STA. 170 + 85.00



IL RTE 53 OVER
SPRING BROOK CREEK
STA. 166 + 46.79
STRUCTURE
REPLACEMENT
SN:022-0074 (E)
022-0189 (P)

IMPROVEMENT LOCATED IN
THE VILLAGE OF ITASCA

BEGIN IMPROVEMENT
STA. 156 + 00.00



FULL SIZE PLANS HAVE BEEN PREPARED USING STANDARD ENGINEERING SCALES. REDUCED SIZED PLANS WILL NOT CONFORM TO STANDARD SCALES. IN MAKING MEASUREMENTS ON REDUCED PLANS, THE ABOVE SCALES MAY BE USED.

J.U.L.I.E.
JOINT UTILITY LOCATION INFORMATION FOR EXCAVATION
1-800-892-0123 OR 811

CONTRACT NO. 62881

LOCATION MAP
SCALE
1" = 2500'

GROSS LENGTH OF IMPROVEMENT = 1,485 FEET = 0.28 MILE
NET LENGTH OF IMPROVEMENT = 1,485 FEET = 0.28 MILE

STATE OF ILLINOIS
DEPARTMENT OF TRANSPORTATION
DIVISION OF HIGHWAYS
SUBMITTED JUNE 17 2009
Diana M. O'Keefe DE
DEPUTY DIRECTOR OF HIGHWAYS, REGION ENGINEER
August 14, 2009
Charles J. Ingersoll RD
ENGINEER OF DESIGN AND ENVIRONMENT
August 14, 2009
Christine M. Reed RD
DIRECTOR OF HIGHWAYS, CHIEF ENGINEER

PRINTED BY THE AUTHORITY
OF THE STATE OF ILLINOIS

DISTRICT 1 - DESIGN/CONSULTANT SERVICES SECTION/ RAJENDRA SHAH (847) 705-4555
PATRICK ENGINEERING INC.