

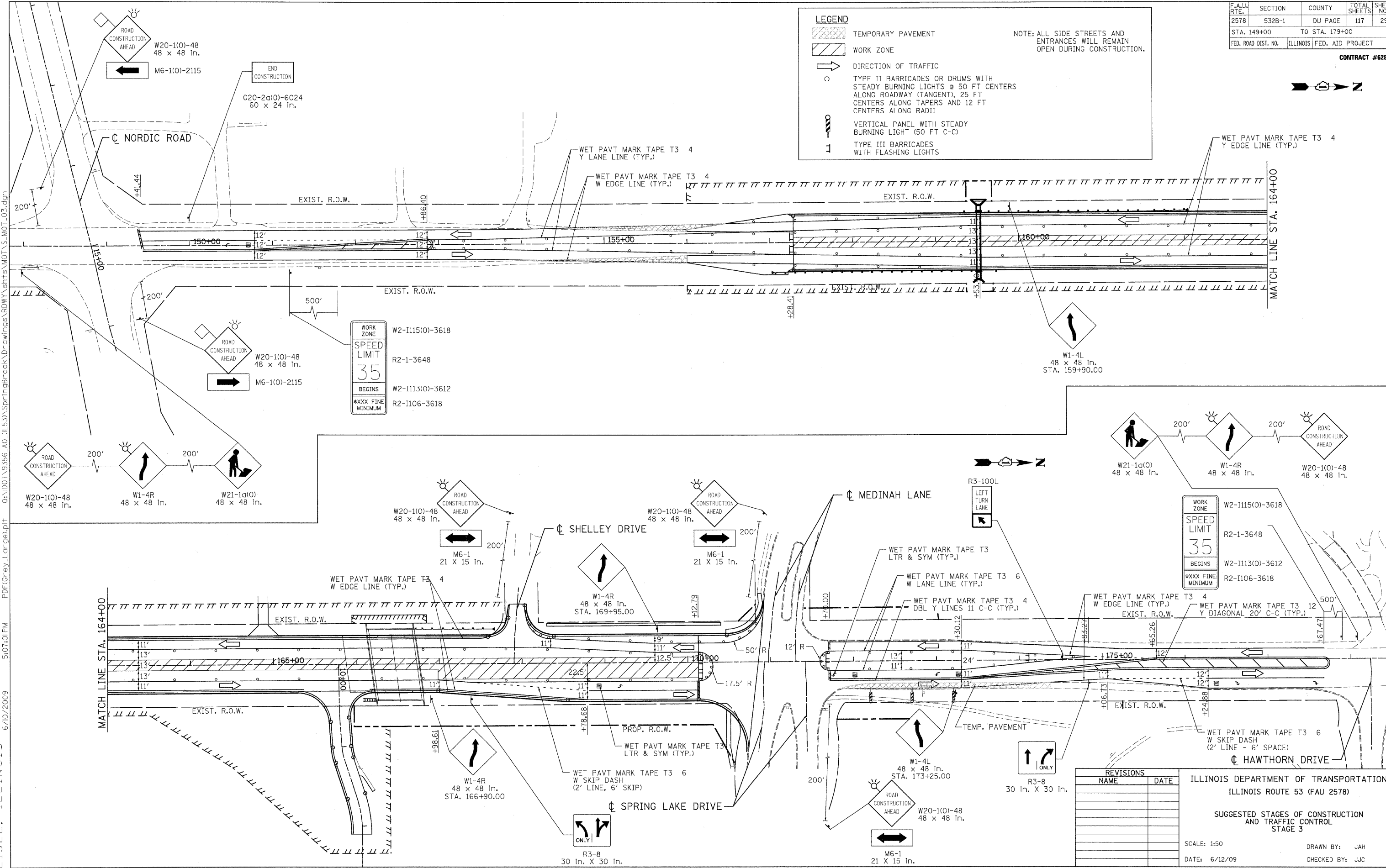
F.A.U. RTE.	SECTION	COUNTY	TOTAL SHEETS	SHEET NO.
2578	532B-1	DU PAGE	117	29
STA. 149+00		TO STA. 179+00		
FED. ROAD DIST. NO.		ILLINOIS FED. AID PROJECT		

CONTRACT #62881

**LEGEND**

- TEMPORARY PAVEMENT
- WORK ZONE
- DIRECTION OF TRAFFIC
- TYPE II BARRICADES OR DRUMS WITH STEADY BURNING LIGHTS @ 50 FT CENTERS ALONG ROADWAY (TANGENT), 25 FT CENTERS ALONG TAPERS AND 12 FT CENTERS ALONG RADII
- VERTICAL PANEL WITH STEADY BURNING LIGHT (50 FT C-C)
- TYPE III BARRICADES WITH FLASHING LIGHTS

NOTE: ALL SIDE STREETS AND ENTRANCES WILL REMAIN OPEN DURING CONSTRUCTION.



WORK ZONE  
SPEED LIMIT  
35  
BEGINS  
#XXX FINE MINIMUM

W2-I115(O)-3618  
R2-1-3648  
W2-I113(O)-3612  
R2-I106-3618

WORK ZONE  
SPEED LIMIT  
35  
BEGINS  
#XXX FINE MINIMUM

W2-I115(O)-3618  
R2-1-3648  
W2-I113(O)-3612  
R2-I106-3618

REVISIONS	
NAME	DATE

ILLINOIS DEPARTMENT OF TRANSPORTATION  
ILLINOIS ROUTE 53 (FAU 2578)

SUGGESTED STAGES OF CONSTRUCTION AND TRAFFIC CONTROL  
STAGE 3

SCALE: 1:50  
DATE: 6/12/09

DRAWN BY: JAH  
CHECKED BY: JJC