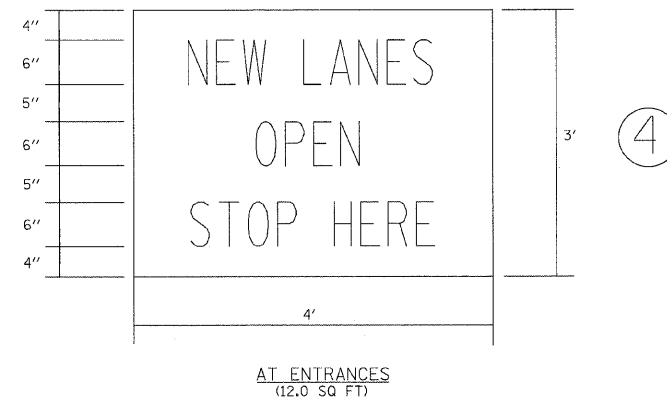
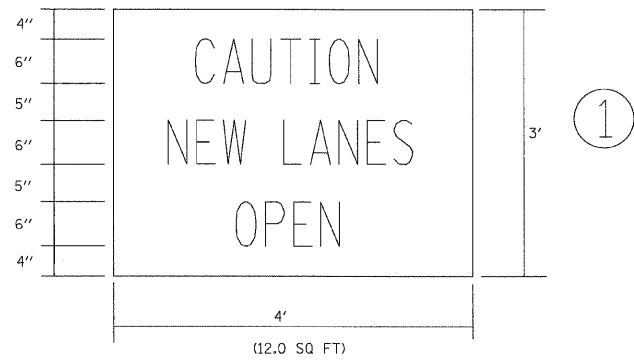
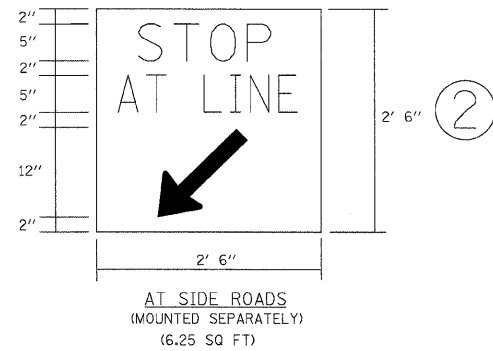


F.A.U. RTE.	SECTION	COUNTY	TOTAL SHEETS	SHEET NO.
2578	532B-1	DUPAGE	117	31
STA.		TO STA.		
FED. ROAD DIST. NO.		ILLINOIS FED. AID PROJECT		

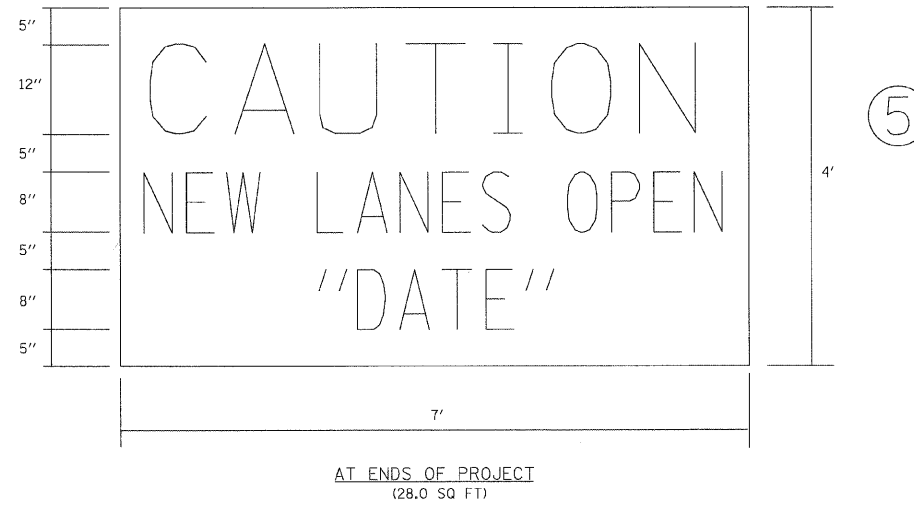
CONTRACT #62881



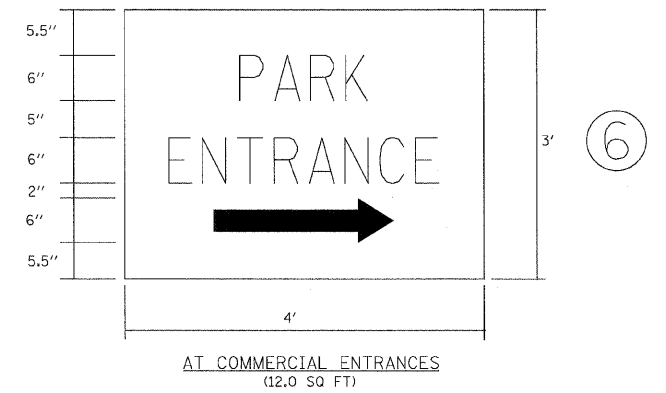
NOTE:  
ABOVE SIGNS SHALL BE BLACK ON ORANGE  
REFLECTIVE BACKGROUND



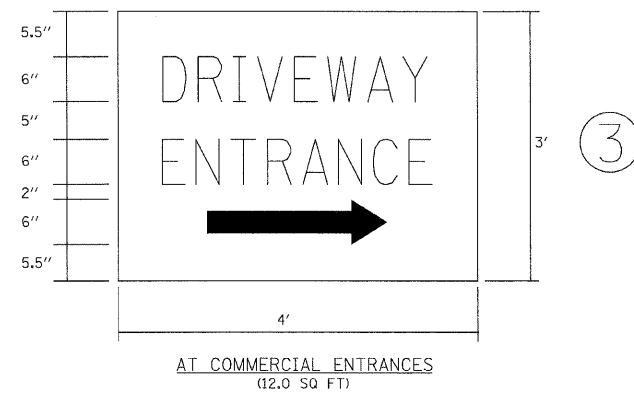
NOTE:  
ABOVE SIGNS SHALL BE BLACK ON ORANGE  
REFLECTIVE BACKGROUND



AT ENDS OF PROJECT  
(28.0 SQ FT)



AT COMMERCIAL ENTRANCES  
(12.0 SQ FT)



AT COMMERCIAL ENTRANCES  
(12.0 SQ FT)

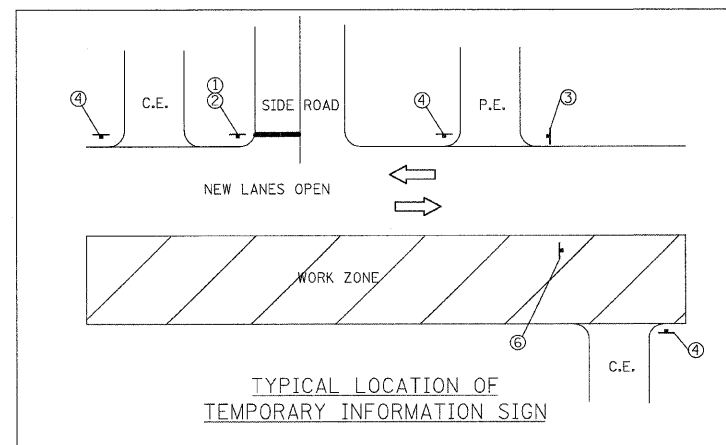
NOTE:  
SIGN SHALL BE GREEN ON WHITE REFLECTIVE  
BACKGROUND WITH .50 IN. BORDER.

TWO SIGNS SHALL BE USED AT EACH COMMERCIAL  
DRIVEWAY AS DIRECTED BY THE ENGINEER.

HALF OF THE SIGNS SHALL REQUIRE THE ARROW  
TO POINT TO THE LEFT AND THE OTHER HALF  
TO THE RIGHT (AS SHOWN).

SEE SPECIAL PROVISION FOR "TEMPORARY  
INFORMATION SIGNS" FOR ADDITIONAL INFORMATION.

ALL DIMENSIONS ARE IN FEET  
UNLESS OTHERWISE SHOWN.



REVISIONS	
NAME	DATE

ILLINOIS DEPARTMENT OF TRANSPORTATION

SUGGESTED STAGING OF CONSTRUCTION  
& TRAFFIC CONTROL  
TEMPORARY INFORMATION SIGNS

SCALE: NONE  
DATE 6/12/09

DRAWN BY TCK  
CHECKED BY JC

hkoepfen@rdwy-lise.com 6/10/2009 5:07:22 PM PDF(Crey\_Lar)gob.plt G:\DOT\9356\_A0\_(L153)\SpringBrook\Drawings\RDWY\shfts\MOT\S.MOT\_signs.dgn