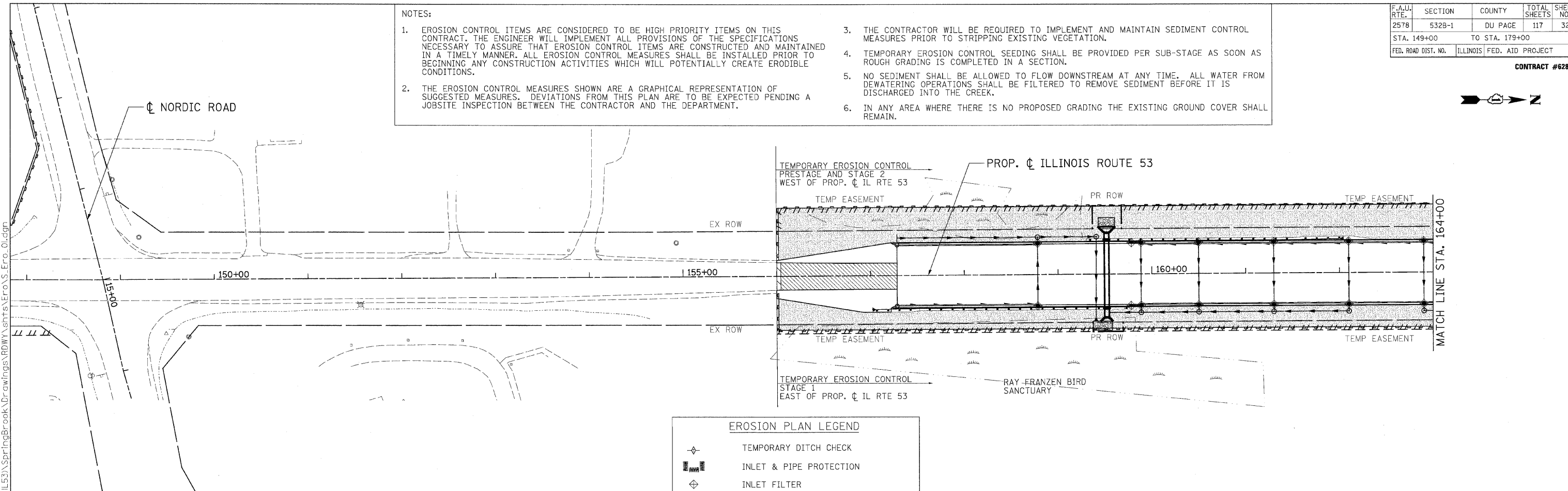


F.A.U. RTE.	SECTION	COUNTY	TOTAL SHEETS	SHEET NO.
2578	532B-1	DU PAGE	117	32
STA. 149+00		TO STA. 179+00		
FED. ROAD DIST. NO.		ILLINOIS	FED. AID PROJECT	

CONTRACT #62881

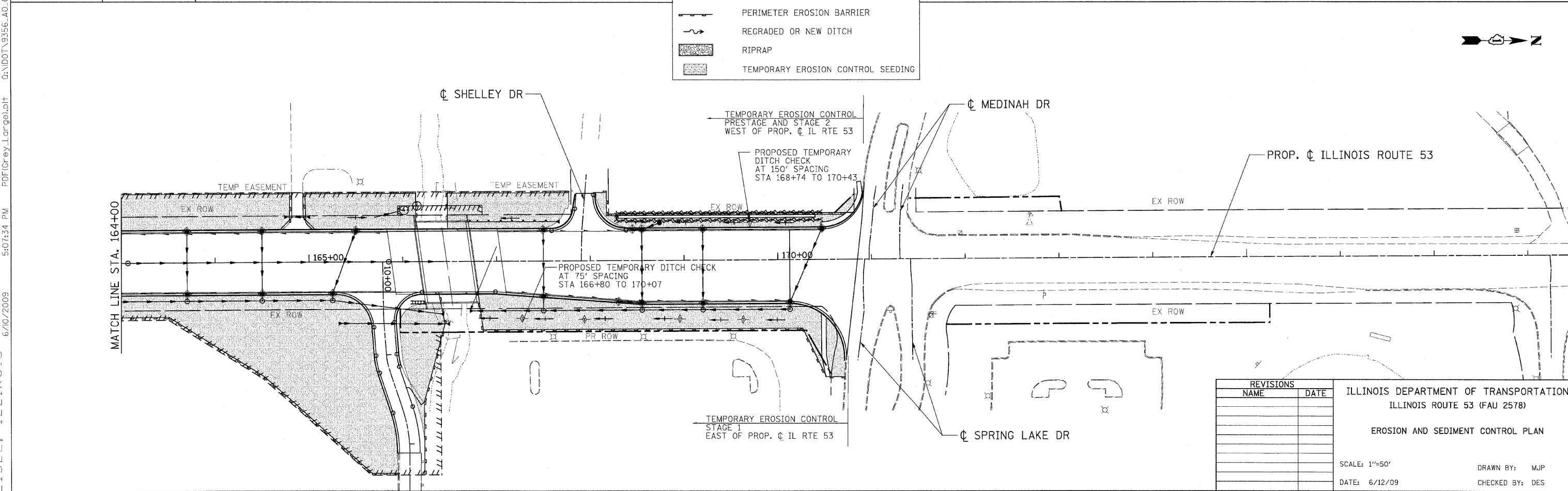
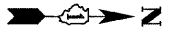
NOTES:

1. EROSION CONTROL ITEMS ARE CONSIDERED TO BE HIGH PRIORITY ITEMS ON THIS CONTRACT. THE ENGINEER WILL IMPLEMENT ALL PROVISIONS OF THE SPECIFICATIONS NECESSARY TO ASSURE THAT EROSION CONTROL ITEMS ARE CONSTRUCTED AND MAINTAINED IN A TIMELY MANNER. ALL EROSION CONTROL MEASURES SHALL BE INSTALLED PRIOR TO BEGINNING ANY CONSTRUCTION ACTIVITIES WHICH WILL POTENTIALLY CREATE ERODIBLE CONDITIONS.
2. THE EROSION CONTROL MEASURES SHOWN ARE A GRAPHICAL REPRESENTATION OF SUGGESTED MEASURES. DEVIATIONS FROM THIS PLAN ARE TO BE EXPECTED PENDING A JOBSITE INSPECTION BETWEEN THE CONTRACTOR AND THE DEPARTMENT.
3. THE CONTRACTOR WILL BE REQUIRED TO IMPLEMENT AND MAINTAIN SEDIMENT CONTROL MEASURES PRIOR TO STRIPPING EXISTING VEGETATION.
4. TEMPORARY EROSION CONTROL SEEDING SHALL BE PROVIDED PER SUB-STAGE AS SOON AS ROUGH GRADING IS COMPLETED IN A SECTION.
5. NO SEDIMENT SHALL BE ALLOWED TO FLOW DOWNSTREAM AT ANY TIME. ALL WATER FROM DEWATERING OPERATIONS SHALL BE FILTERED TO REMOVE SEDIMENT BEFORE IT IS DISCHARGED INTO THE CREEK.
6. IN ANY AREA WHERE THERE IS NO PROPOSED GRADING THE EXISTING GROUND COVER SHALL REMAIN.



**EROSION PLAN LEGEND**

	TEMPORARY DITCH CHECK
	INLET & PIPE PROTECTION
	INLET FILTER
	PERIMETER EROSION BARRIER
	REGRADED OR NEW DITCH
	RIPRAP
	TEMPORARY EROSION CONTROL SEEDING



REVISIONS	
NAME	DATE

ILLINOIS DEPARTMENT OF TRANSPORTATION  
ILLINOIS ROUTE 53 (FAU 2578)  
EROSION AND SEDIMENT CONTROL PLAN

SCALE: 1"=50'  
DATE: 6/12/09

DRAWN BY: MJP  
CHECKED BY: DES

6/10/2009 5:07:34 PM PDF(Grey\_Large).pl+ Q:\DOT\9356\_A0\_IL53\SpringBrook\Drawings\RDWY\shhs\ero\S.Ero\_01.dgn  
 koeppen(Rdwy\_Lis@) PATRICK ENGINEERING INC. LISLE, ILLINOIS