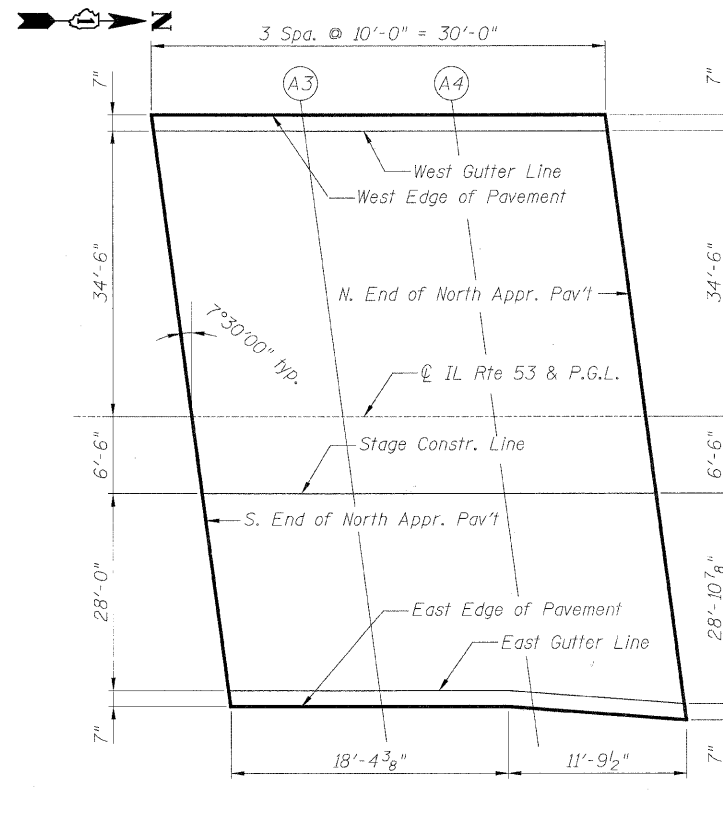


PLAN
South Approach



PLAN
North Approach

EAST EDGE OF PAVEMENT

Location	Station	Offset	Theoretical Grade Elevation
S. End South Appr. Pav't	165+92.57	34.50	693.27
A1	166+02.57	34.50	693.32
A2	166+12.79	36.16	693.33
N. End South Appr. Pav't	166+22.65	35.08	693.39
S. End North Appr. Pav't	166+80.17	35.08	693.38
A3	166+90.17	35.08	693.34
A4	167+00.19	35.21	693.29
N. End North Appr. Pav't	167+10.29	35.99	693.23

EAST GUTTER LINE

Location	Station	Offset	Theoretical Grade Elevation
S. End South Appr. Pav't	N/A	N/A	N/A
A1	N/A	N/A	N/A
A2	166+12.71	35.57	693.34
N. End South Appr. Pav't	166+22.57	34.50	693.40
S. End North Appr. Pav't	166+80.09	34.50	693.39
A3	166+90.09	34.50	693.35
A4	167+00.11	34.63	693.31
N. End North Appr. Pav't	167+10.21	35.41	693.24

CENTERLINE IL RTE 53 & P.G.L.

Location	Station	Offset	Theoretical Grade Elevation
S. End South Appr. Pav't	165+88.03	0.00	693.94
A1	165+98.03	0.00	693.99
A2	166+08.03	0.00	694.04
N. End South Appr. Pav't	166+18.03	0.00	694.07
S. End North Appr. Pav't	166+75.55	0.00	694.09
A3	166+85.55	0.00	694.06
A4	166+95.55	0.00	694.02
N. End North Appr. Pav't	167+05.55	0.00	693.97

WEST EDGE OF PAVEMENT

Location	Station	Offset	Theoretical Grade Elevation
S. End South Appr. Pav't	165+83.41	-35.08	693.22
A1	165+93.41	-35.08	693.27
A2	166+03.41	-35.08	693.31
N. End South Appr. Pav't	166+13.41	-35.08	693.36
S. End North Appr. Pav't	166+70.93	-35.08	693.40
A3	166+80.93	-35.08	693.38
A4	166+90.93	-35.08	693.34
N. End North Appr. Pav't	167+00.93	-35.08	693.29

WEST GUTTER LINE

Location	Station	Offset	Theoretical Grade Elevation
S. End South Appr. Pav't	165+83.49	-34.50	693.23
A1	165+93.49	-34.50	693.28
A2	166+03.49	-34.50	693.33
N. End South Appr. Pav't	166+13.49	-34.50	693.37
S. End North Appr. Pav't	166+71.01	-34.50	693.41
A3	166+81.01	-34.50	693.39
A4	166+91.01	-34.50	693.35
N. End North Appr. Pav't	167+01.01	-34.50	693.30

STAGE CONSTRUCTION LINE

Location	Station	Offset	Theoretical Grade Elevation
S. End South Appr. Pav't	165+88.89	6.50	693.81
A1	165+98.89	6.50	693.86
A2	166+08.89	6.50	693.91
N. End South Appr. Pav't	166+18.89	6.50	693.95
S. End North Appr. Pav't	166+76.41	6.50	693.96
A3	166+86.41	6.50	693.93
A4	166+96.41	6.50	693.89
N. End North Appr. Pav't	167+06.41	6.50	693.84

H:\copper\Drawy_L\1518\6/10/2009 5:09:26 PM G:\DOT\3356_AG\IL53\SpringBrook\Drawings\STRUCT\04_approach_alb_elev.dgn



ILLINOIS DEPARTMENT OF TRANSPORTATION
TOP OF APPROACH SLAB ELEVATIONS

ILLINOIS ROUTE 53 OVER
SPRING BROOK CREEK
FAU 2578 SECTION 532B-1
STRUCTURE NO. 022-0189
DUPAGE COUNTY STATION 166+46.79
SCALE: NONE DRAWN BY: A. DURBAK
DATE: 6/12/09 CHECKED BY: R. DIGIULIO

REVISIONS	
NAME	DATE