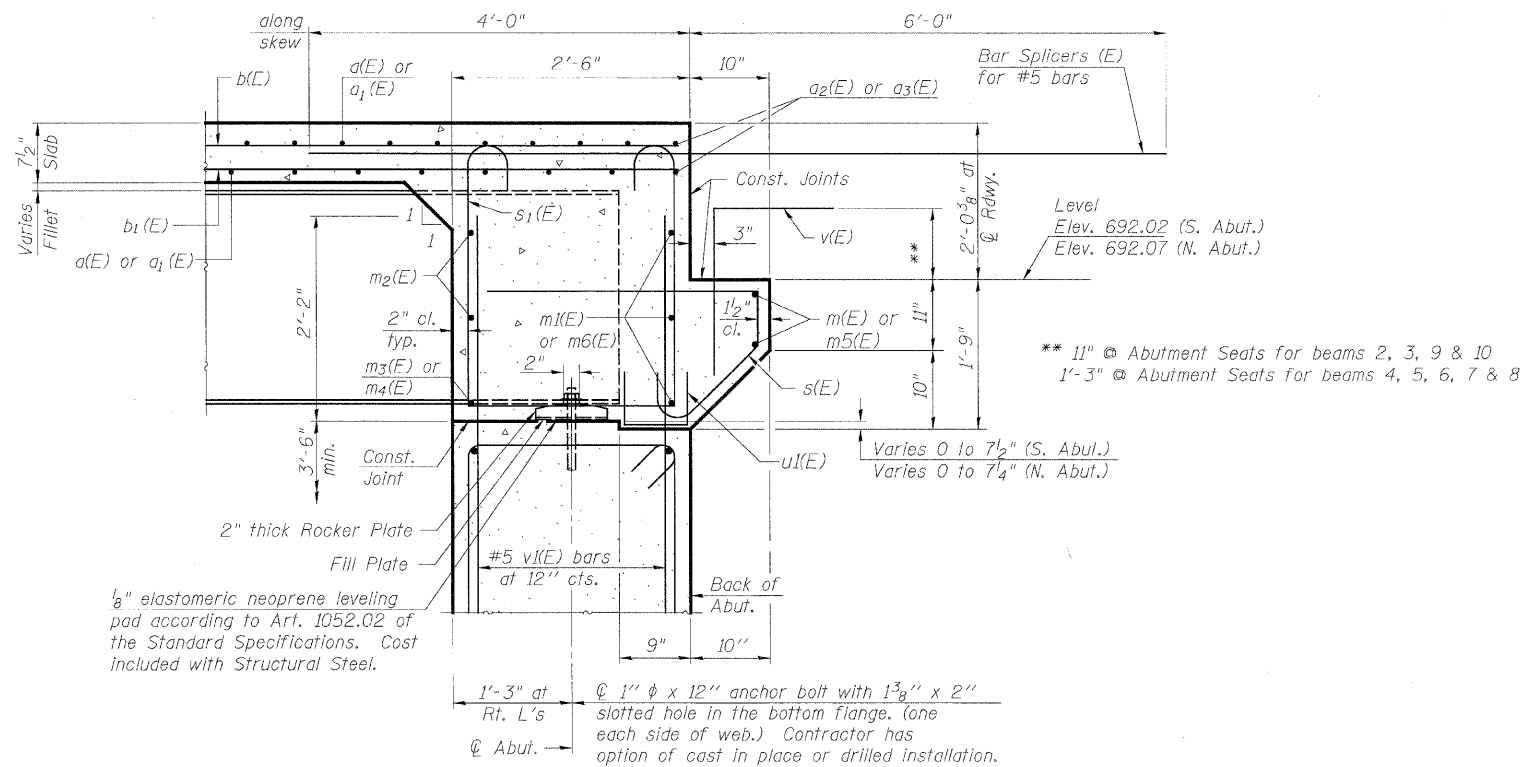


**DIAPHRAGM ELEVATION AT ABUTMENT**

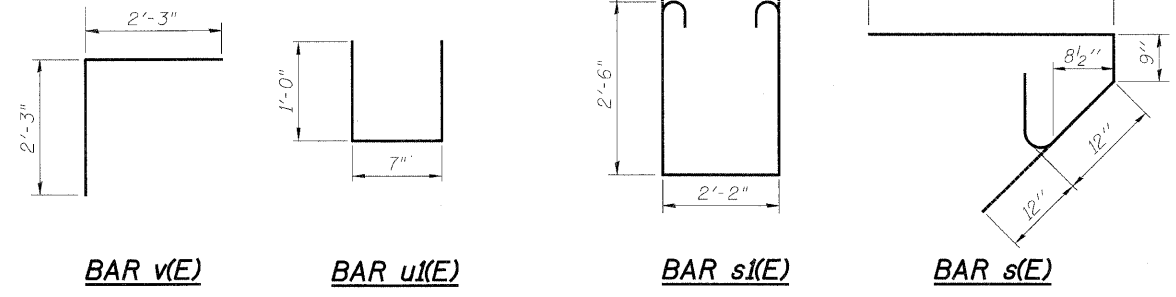
South Abutment - Looking South  
 North Abutment similar

\* Shift m2(E) bars towards the Stage Line as required for min. bar lap.



**SECTION A-A**

Dimensions at right angles to abutment, except as shown.



**NOTES:**

1. Reinforcement bars in diaphragm are billed with superstructure on Sheet S6.
2. Concrete in diaphragm is included with Concrete Superstructure on Sheet S6.
3. The s(E), s(E) and u(E) bars shall be placed parallel to the beams. Spacing for these bars shall be at right angles to the beams.
4. For anchor bolt details see Sheet S11.

REVISIONS	
NAME	DATE

**MIN. BAR LAP**

#6 bar = 2'-9"

ILLINOIS DEPARTMENT OF TRANSPORTATION

**DIAPHRAGM DETAILS**

ILLINOIS ROUTE 53 OVER  
 SPRING BROOK CREEK  
 FAU 2578 SECTION 532B-1  
 STRUCTURE NO. 022-0189  
 DUPAGE COUNTY STATION 166+46.79

SCALE: NONE DRAWN BY: E. MROCZEK  
 DATE: 6/12/09 CHECKED BY: A. YARGICOGLU