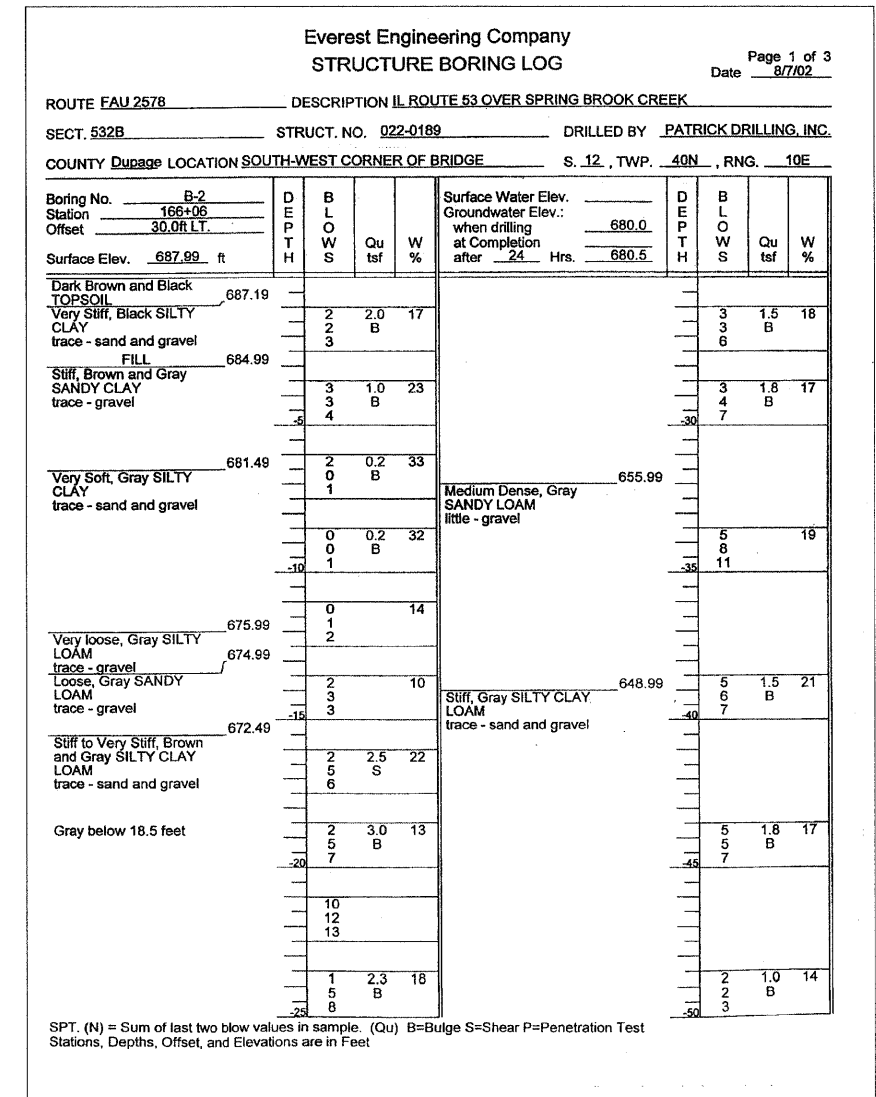
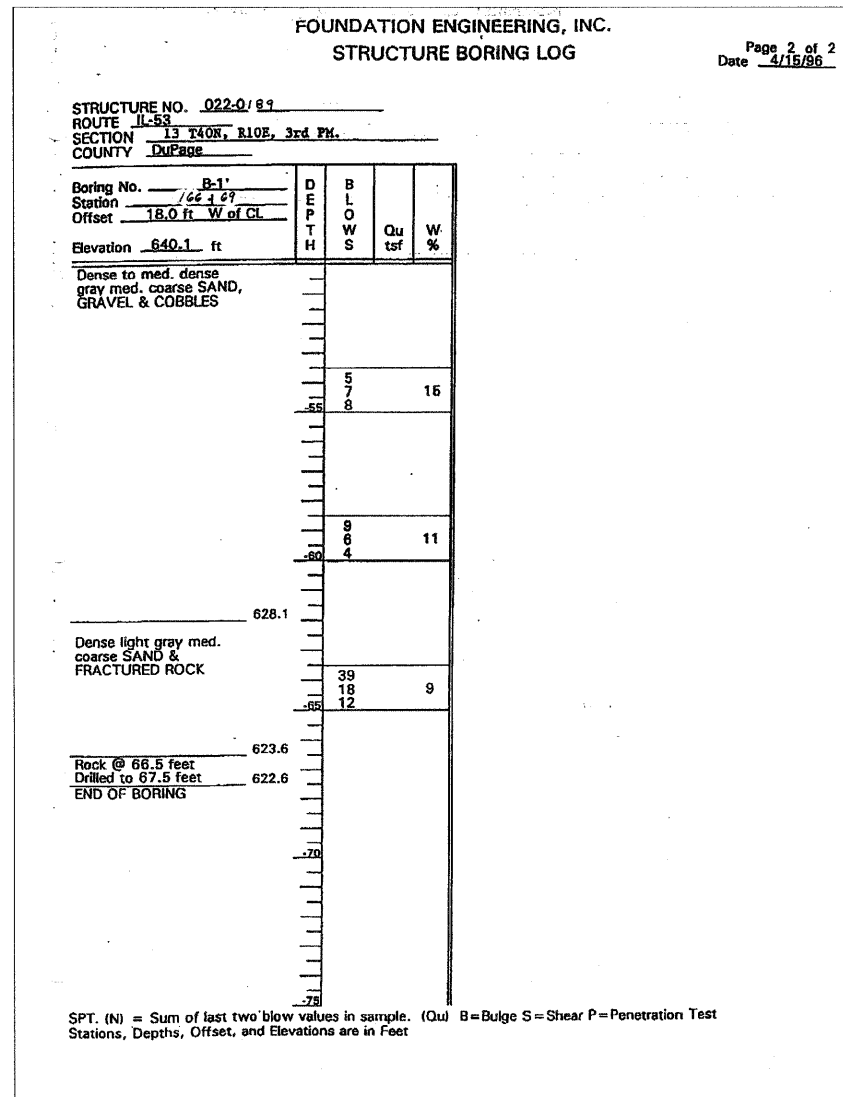
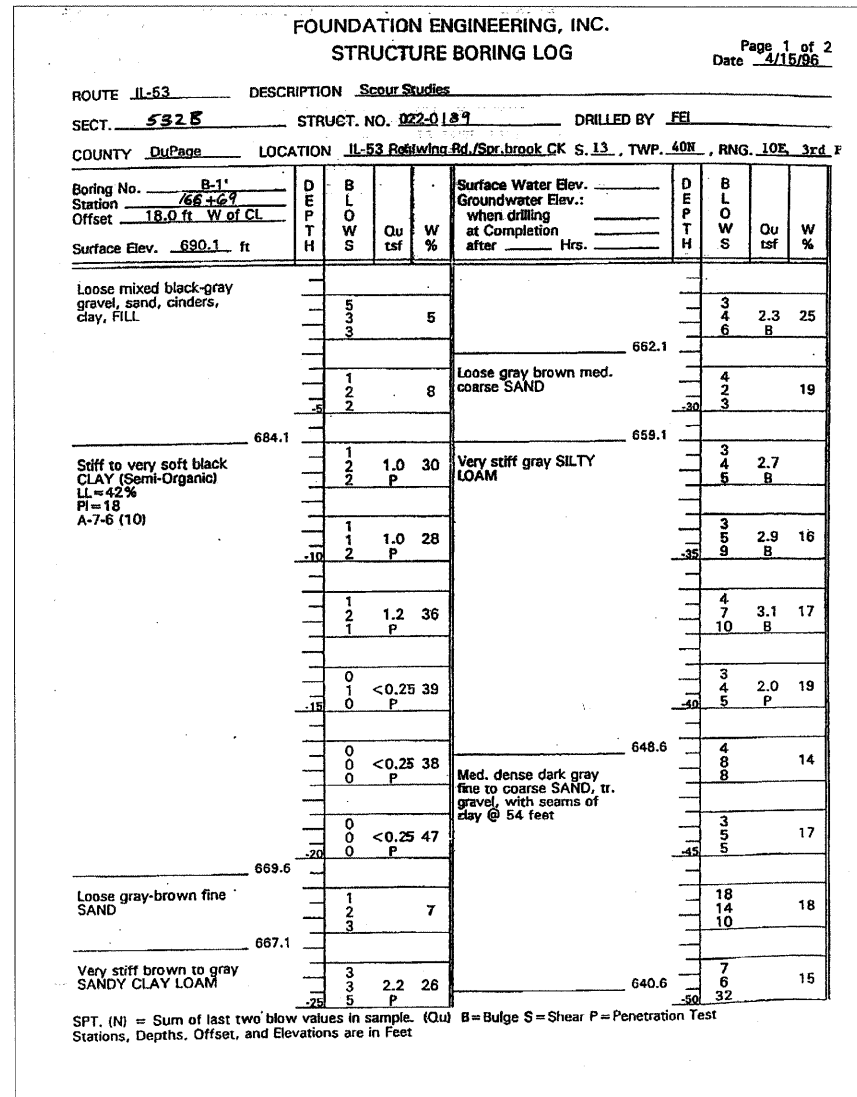


F.A.U. RTE.	SECTION	COUNTY	TOTAL SHEETS	SHEET NO.
2578	532B-1	DUPAGE	117	64
FED. ROAD DIST. NO. 7 ILLINOIS FED. AID PROJECT				



H:\koppem\Rev\wy.L\1616\6/10/2009 5:12:20 PM G:\NDOT\33556_A0_IL(53)\Spr\ng\Brock\Dr\w\ngs\STRUCT\NT_spl\boring\log\sl.dgn



REVISIONS	
NAME	DATE

ILLINOIS DEPARTMENT OF TRANSPORTATION

SOIL BORING LOGS - I
ILLINOIS ROUTE 53 OVER SPRING BROOK CREEK
FAU 2578 SECTION 532B-1
STRUCTURE NO. 022-0189
DUPAGE COUNTY STATION 166+46.79

SCALE: NONE DRAWN BY: E. MROCEK
DATE: 6/12/09 CHECKED BY: G. HATLESTAD