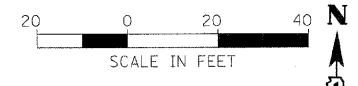


F.A. RTE.	SECTION	COUNTY	TOTAL SHEETS	SHEET NO.
1503	08-00260-01-PV	KANE	176	32
STA. 32+00		TO STA. 38+00		
FED. ROAD DIST. NO.	ILLINOIS	FED. AID PROJECT		



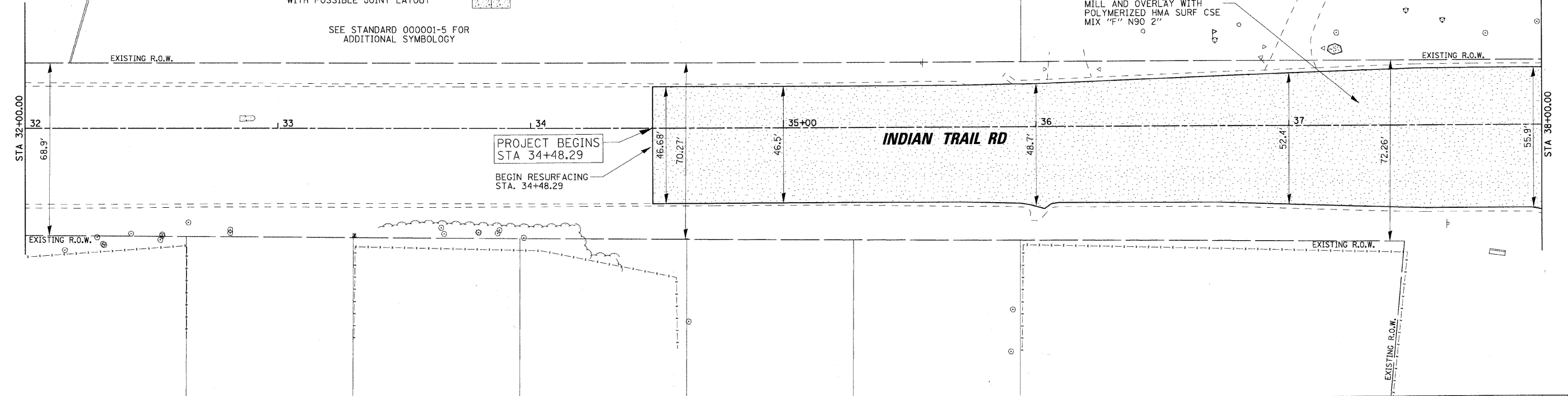
LEGEND

- MILLING AND OVERLAY AREA
- MODULAR CONCRETE PAVER - SPECIAL
- PROPOSED CONCRETE SURFACE AREA
- PROPOSED CONCRETE SURFACE AREA WITH POSSIBLE JOINT LAYOUT

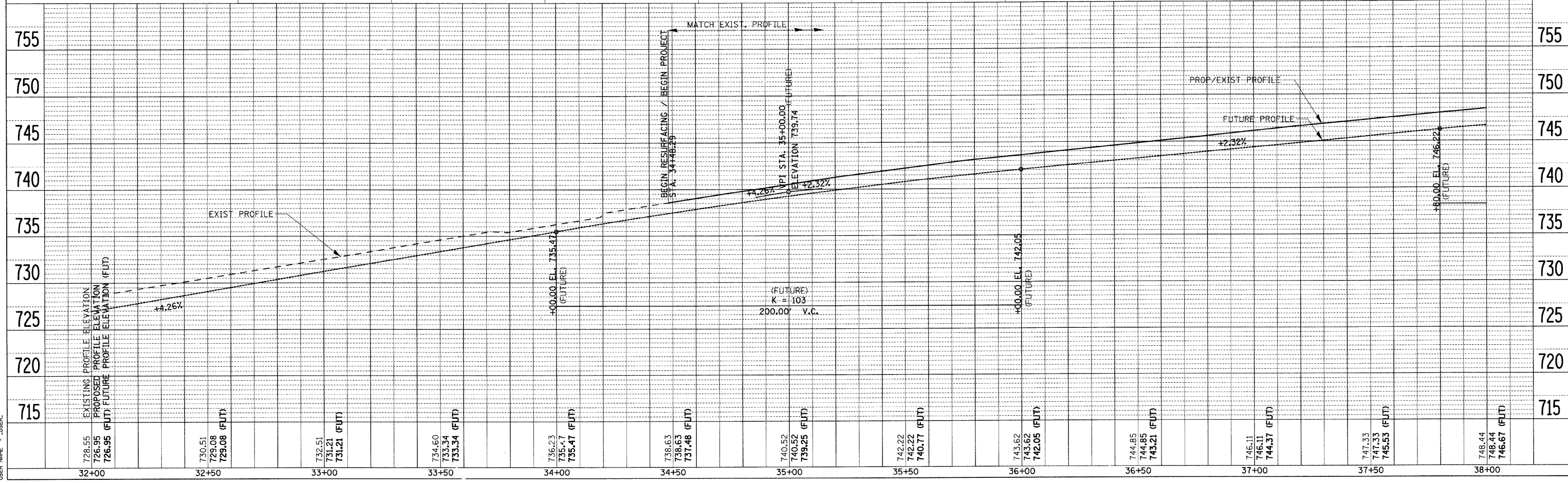
SEE STANDARD 000001-5 FOR ADDITIONAL SYMBOLLOGY

MILL AND OVERLAY WITH POLYMERIZED HMA SURF CSE MIX "F" N90 2"

PLAN	REVISION	DATE
NOTE BOOK NO.	BY	
	DATE	



PROFILE	REVISION	DATE
NOTE BOOK NO.	BY	
	DATE	



PLOT DATE = 5/26/2009
 PLOT SCALE = 1" = 20'
 USER NAME = JUSER