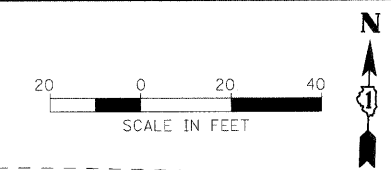
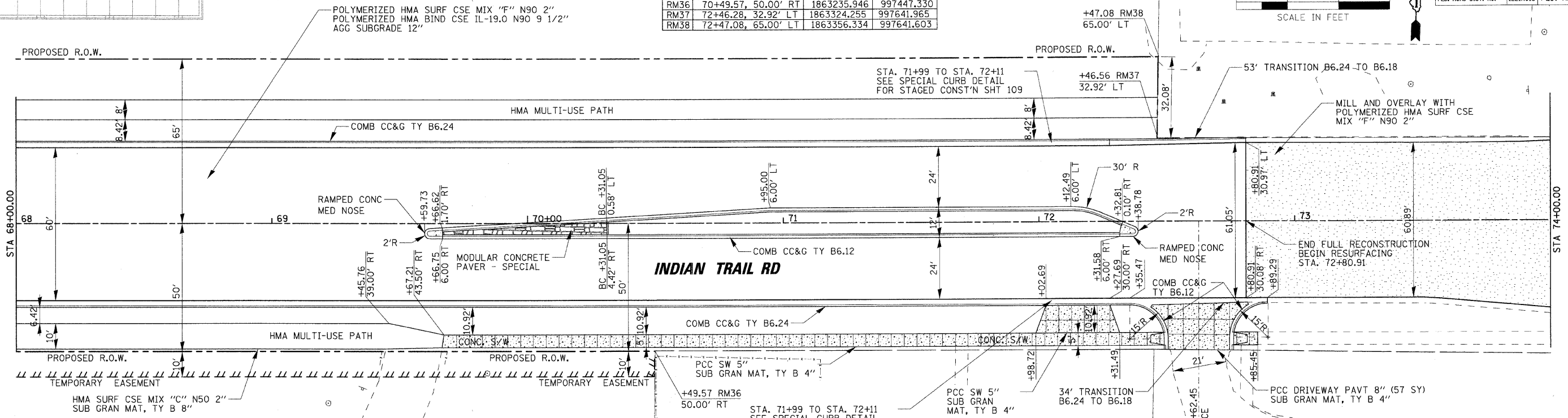


F.A. RTE.	SECTION	COUNTY	TOTAL SHEETS	SHEET NO.
1503	08-00260-01-PV	KANE	176	38
STA. 68+00		TO STA. 74+00		
FED. ROAD DIST. NO.	ILLINOIS	FED. AID PROJECT		

ROW MARKERS / PROPERTY PINS				
PT	STATION/OFFSET	NORTHING	EASTING	
RM36	70+49.57, 50.00' RT	1863235.946	997447.330	
RM37	72+46.28, 32.92' LT	1863324.255	997641.965	
RM38	72+47.08, 65.00' LT	1863356.334	997641.603	

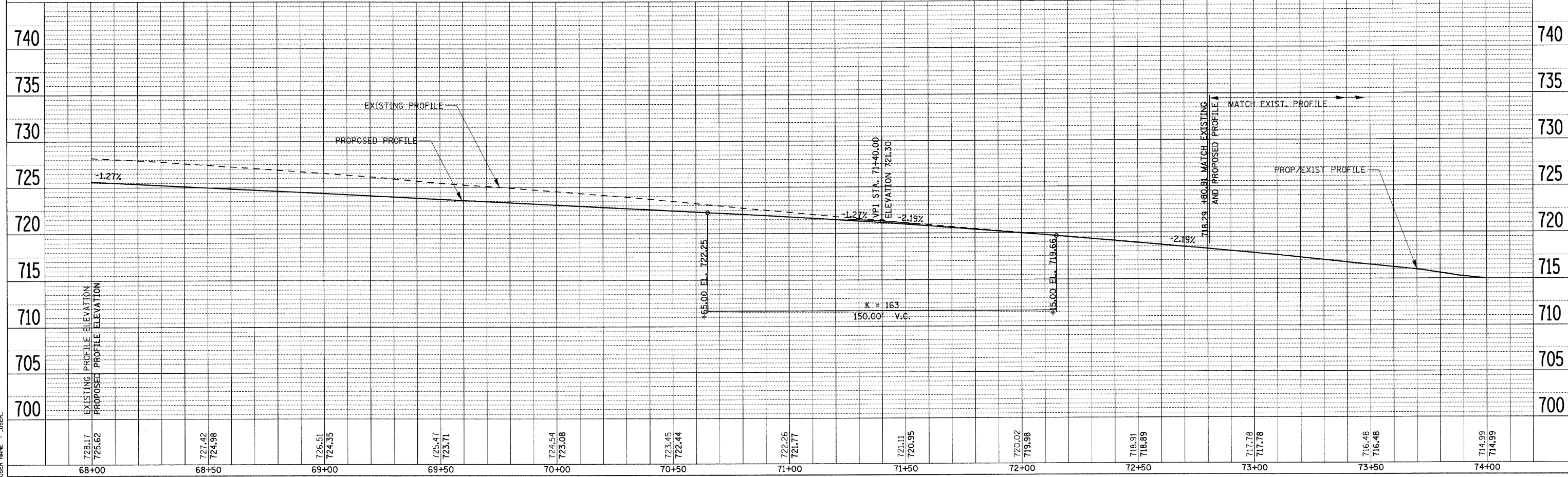


PLAN	SUBMITTED	DATE
NO.	BY	
	NOTED	
	PLOTTED	
	CHECKED	
	AT 10% SCALE	
	FILE NAME	



- NOTES:
1. DETECTABLE WARNINGS SHALL BE INSTALLED AT CURB RAMPS.
 2. RADIUS DIMENSION TO EDGE OF PAVEMENT UNLESS OTHERWISE NOTED.

PROFILE	SUBMITTED	DATE
NO.	BY	
	NOTED	
	PLOTTED	
	CHECKED	
	STRUCTURE	
	NOTATIONS	
	CHKD	



PLOT DATE = 6/26/2009
 PLOT SCALE = 1" = 20'
 USER NAME = JUSER