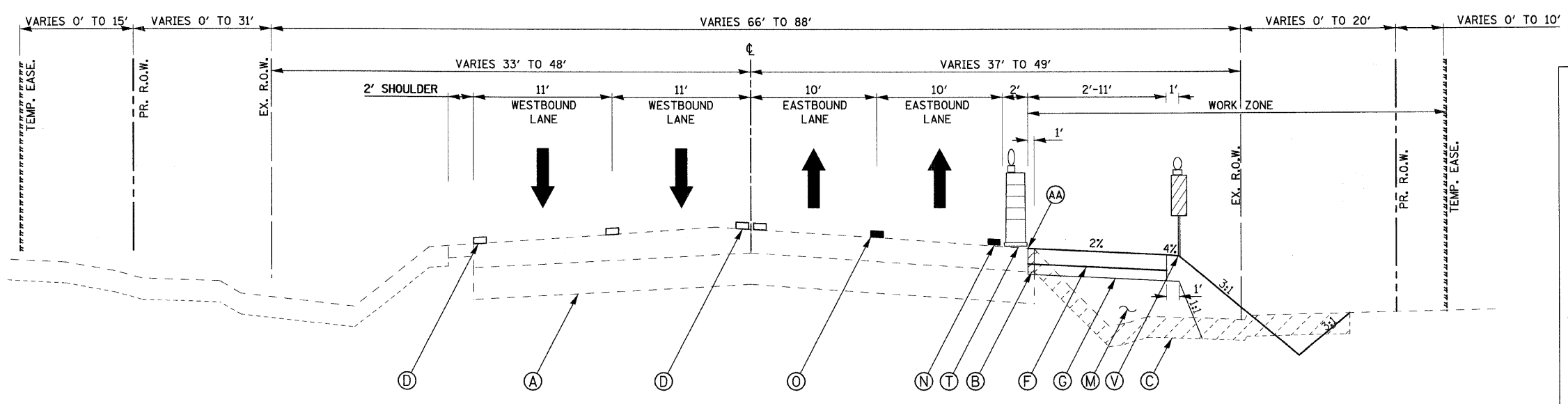
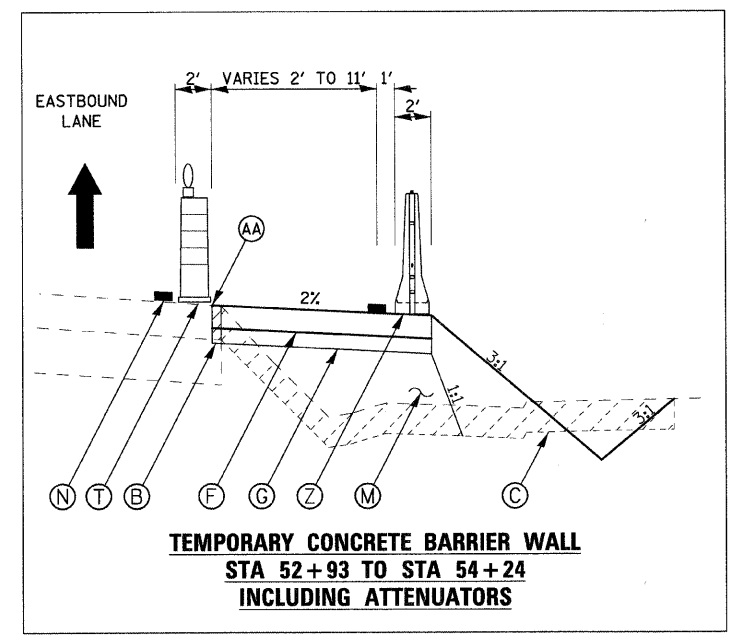


F.A.U. RTE.	SECTION	COUNTY	TOTAL SHEETS	SHEET NO.
1503	08-00260-01-PV	KANE	176	42
STA. N/A		TO STA. N/A		
FED. ROAD DIST. NO.		ILLINOIS FED. AID PROJECT		



**INDIAN TRAIL SUBSTAGE 1A  
TEMPORARY PAVEMENT WIDENING  
STA. 39+48.92 TO STA. 72+80.91**

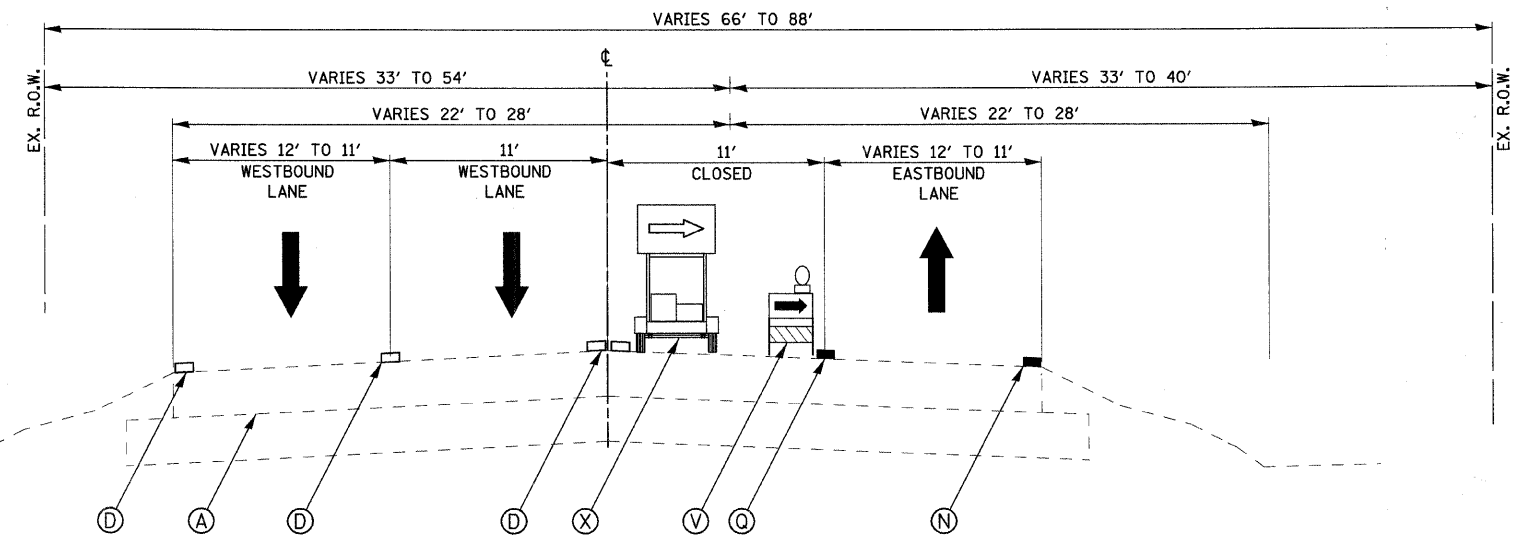
TEMPORARY PAVEMENT TO BE CONSTRUCTED UNDER STANDARD 70101500 (SPECIAL)



**TEMPORARY CONCRETE BARRIER WALL  
STA 52+93 TO STA 54+24  
INCLUDING ATTENUATORS**

**LEGEND**

- (A) EXIST. PAVEMENT STRUCTURE - TO REMAIN
- (B) EXIST. PAVEMENT STRUCTURE - TO BE REMOVED
- (C) EXIST. EARTH/TOPSOIL - TO BE REMOVED
- (D) EXIST. PAVEMENT MARKINGS - TO REMAIN
- (E) PROP. PAVEMENT STRUCTURE
- (F) PROP. TEMPORARY BITUMINOUS PAVEMENT - 6"
- (G) PROP. TEMPORARY AGGREGATE BASE COURSE - 4"
- (H) PROP. BITUMINOUS BIKE PATH
- (I) PROP. TEMPORARY AGGREGATE SHOULDER (VAR. DEPTH) (TO BE PAID AS AGGREGATE SHOULDER SPECIAL)
- (J) PROP. BITUMINOUS SURFACE COURSE
- (K) PROP. SURFACE MILLING - (THICKNESS SAME AS SURFACE CRSE.)
- (L) PROP. COMB. CONCRETE CURB AND GUTTER/MEDIAN
- (M) PROP. STRUCTURAL EMBANKMENT
- (N) TEMPORARY PAVEMENT MARKING LINE - 4" SOLID WHITE
- (O) TEMPORARY PAVEMENT MARKING LINE - 4" SKIP DASH WHITE
- (P) TEMPORARY PAVEMENT MARKING LINE - 6" SOLID WHITE
- (Q) TEMPORARY PAVEMENT MARKING LINE - 4" SOLID YELLOW
- (R) TEMPORARY PAVEMENT MARKING LINE - 2-4" DOUBLE YELLOW
- (S) TEMPORARY SHORT-TERM PAVEMENT MARKING LINE - 4" (COLOR AS REQ.)
- (T) DRUMS WITH STEADY BURN LIGHTS ON 50' CENTERS
- (U) DIRECTIONAL TYPE 1 BARRICADES
- (V) VERTICAL PANELS - POST MOUNTED
- (W) TYPE III BARRICADES
- (X) DIRECTIONAL ARROW BOARD
- (Y) FLEXIBLE DELINEATOR
- (Z) TEMPORARY CONCRETE BARRIER WALL WITH GLARE SCREEN
- (AA) FULL DEPTH SAWCUT



**PROPOSED INDIAN TRAIL LANE REDUCTION  
DETAIL - STAGE 1  
STA. 29+30.82 TO STA. 34+78.96**

**STRUCTURAL PAVEMENT DESIGN-TEMPORARY PAVEMENT**

STRUCTURAL DESIGN TRAFFIC: Year 2009  
 PV = 20772 SU = 562 MU = 346  
 ROAD/STREET CLASSIFICATION: Class I  
 PERCENT OF STRUCTURAL DESIGN TRAFFIC IN DESIGN LANE:  
 P = 96 S = 3 M = 2  
 TRAFFIC FACTOR: Actual TF = 0.11 AC Type = PG 64-22  
 Minimum TF = N/A  
 PG GRADE: Binder = PG 64-22 Surface = PG 64-22/58-22  
 SUBGRADE SUPPORT RATING: SSR = POOR

HOT-MIX ASPHALT MIXTURE REQUIREMENTS			
ITEM	AC TYPE	VOIDS	RAP
INDIAN TRAIL ROAD			
TEMPORARY PAVEMENT (HMA BINDER IL-19 mm), 6"	PG 64-22/58-22	4% @ 50 GYR.	25

THE UNIT WEIGHT USED TO CALCULATE ALL HMA SURFACE MIXTURE QUANTITIES IS 112 LB/SQ YD/IN.  
 \* WHEN RAP EXCEEDS 20%, THE NEW ASPHALT BINDER IN THE MIX SHALL BE PG 58-22.



REVISIONS	
NAME	DATE

ILLINOIS DEPARTMENT OF TRANSPORTATION  
 MAINTENANCE OF TRAFFIC - TYPICAL SECTION  
 INDIAN TRAIL ROAD  
 SHEET 2 OF 22  
 SCALE: VERT. N/A  
 DATE 1/7/09  
 DRAWN BY TC  
 CHECKED BY TC/SBP

PLOT DATE = 1/5/2009  
 FILE NAME = H:\Users\ra120895\ITPH11\Civil\Shan\DOT\_1\tp.dgn  
 PLOT SCALE = N/A  
 USER NAME = USER