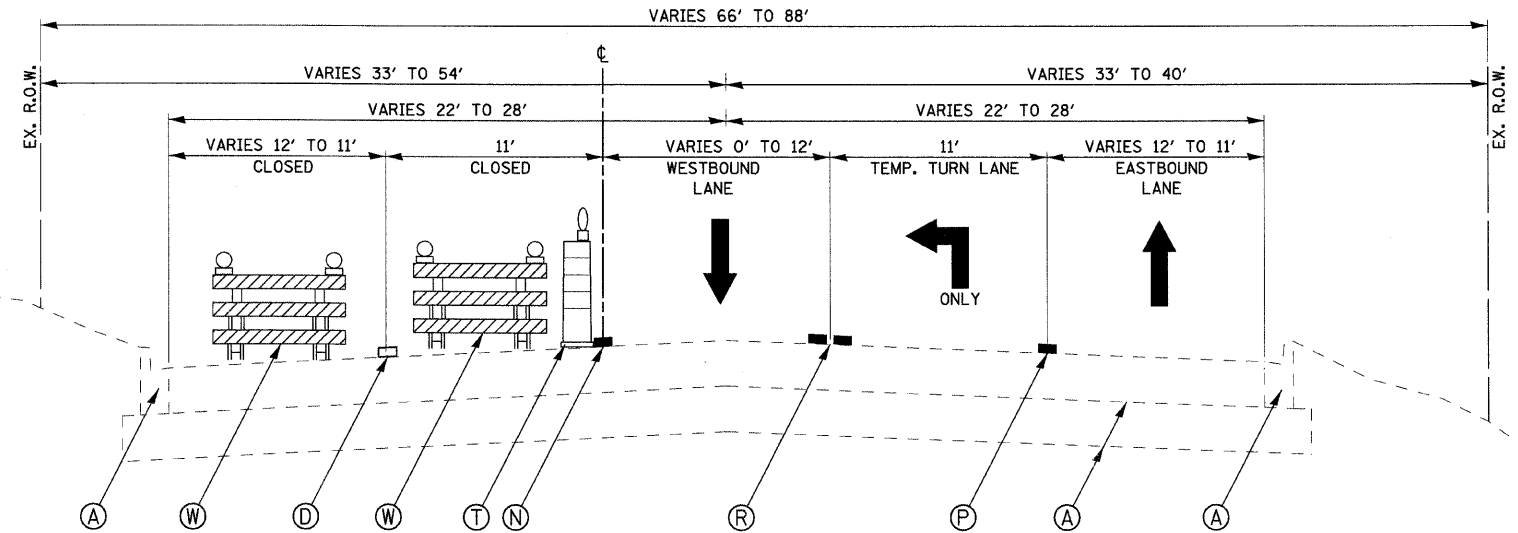
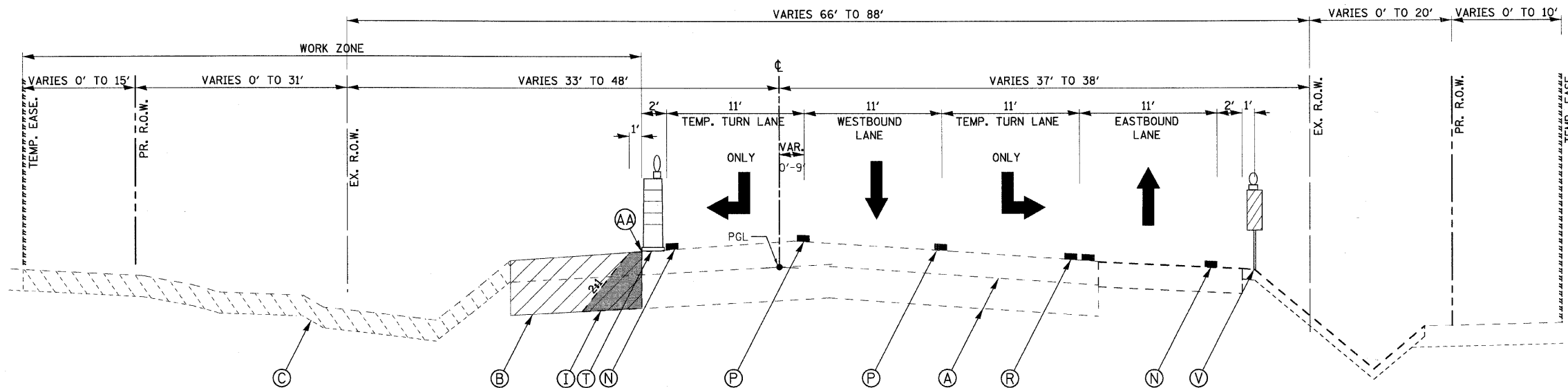


F.A.U. RTE.	SECTION	COUNTY	TOTAL SHEETS	SHEET NO.
1503	08-00260-01-PV	KANE	176	43
STA. N/A		TO STA. N/A		
FED. ROAD DIST. NO.		ILLINOIS FED. AID PROJECT		



**PROPOSED INDIAN TRAIL LANE REDUCTION
DETAIL - STAGE 1
STA. 37+23.07 TO STA. 38+41.56**



**INDIAN TRAIL STAGE 1
STA. 39+48.92 TO STA. 46+00.00**

- LEGEND**
- (A) EXIST. PAVEMENT STRUCTURE - TO REMAIN
 - (B) EXIST. PAVEMENT STRUCTURE - TO BE REMOVED
 - (C) EXIST. EARTH/TOPSOIL - TO BE REMOVED
 - (D) EXIST. PAVEMENT MARKINGS - TO REMAIN
 - (E) PROP. PAVEMENT STRUCTURE
 - (F) PROP. TEMPORARY BITUMINOUS PAVEMENT - 6"
 - (G) PROP. TEMPORARY AGGREGATE BASE COURSE - 4"
 - (H) PROP. BITUMINOUS BIKE PATH
 - (I) PROP. TEMPORARY AGGREGATE SHOULDER (VAR. DEPTH) (TO BE PAID AS AGGREGATE SHOULDER SPECIAL)
 - (J) PROP. BITUMINOUS SURFACE COURSE
 - (K) PROP. SURFACE MILLING - (THICKNESS SAME AS SURFACE CRSE.)
 - (L) PROP. COMB. CONCRETE CURB AND GUTTER/MEDIAN
 - (M) PROP. STRUCTURAL EMBANKMENT
 - (N) TEMPORARY PAVEMENT MARKING LINE - 4" SOLID WHITE
 - (O) TEMPORARY PAVEMENT MARKING LINE - 4" SKIP DASH WHITE
 - (P) TEMPORARY PAVEMENT MARKING LINE - 6" SOLID WHITE
 - (Q) TEMPORARY PAVEMENT MARKING LINE - 4" SOLID YELLOW
 - (R) TEMPORARY PAVEMENT MARKING LINE - 2-4" DOUBLE YELLOW
 - (S) TEMPORARY SHORT-TERM PAVEMENT MARKING LINE - 4" (COLOR AS REQ.)
 - (T) DRUMS WITH STEADY BURN LIGHTS ON 50' CENTERS
 - (U) DIRECTIONAL TYPE 1 BARRICADES
 - (V) VERTICAL PANELS - POST MOUNTED
 - (W) TYPE III BARRICADES
 - (X) DIRECTIONAL ARROW BOARD
 - (Y) FLEXIBLE DELINEATOR
 - (Z) TEMPORARY CONCRETE BARRIER WALL WITH GLARE SCREEN
 - (AA) FULL DEPTH SAWCUT

**INDIAN TRAIL
STRUCTURAL PAVEMENT DESIGN**

STRUCTURAL DESIGN TRAFFIC: Year 2020
 PV = 28740 SU = 780 MU = 480
 ROAD/STREET CLASSIFICATION: Class I
 PERCENT OF STRUCTURAL DESIGN TRAFFIC IN DESIGN LANE:
 P = 96 S = 3 M = 2
 TRAFFIC FACTOR: Actual TF = 3.04 AC Type = PG 70-22
 Minimum TF = N/A
 PG GRADE: Binder = PG 70-22 Surface = PG 70-22
 SUBGRADE SUPPORT RATING: SSR = POOR

HOT-MIX ASPHALT MIXTURE REQUIREMENTS			
ITEM	AC TYPE	VOIDS	RAP
ROADWAY			
POLYMERIZED HOT-MIX ASPHALT SURFACE COURSE, MIX "F", N90 (IL 9.5 mm)	SBS/SBR PG 70-22	4% @ 90 GYR.	10
POLYMERIZED HOT-MIX ASPHALT BINDER COURSE, IL-19.0, N90	SBS/SBR PG 70-22	4% @ 90 GYR.	10
HOT-MIX ASPHALT SURFACE COURSE, MIX "D", N50 (IL 9.5 mm)	PG 64-22	4% @ 70 GYR.	15
HOT-MIX ASPHALT BINDER COURSE, IL-19.0, N50	PG 64-22/58-22	4% @ 70 GYR.	25
HOT-MIX ASPHALT BASE COURSE, (HMA BINDER IL-19 mm)	PG 64-22/58-22	4% @ 90 GYR.	25

THE UNIT WEIGHT USED TO CALCULATE ALL HMA SURFACE MIXTURE QUANTITIES IS 112 LB/SQ YD/IN.
 * WHEN RAP EXCEEDS 20%, THE NEW ASPHALT BINDER IN THE MIX SHALL BE PG 58-22.

HOT-MIX ASPHALT MIXTURE REQUIREMENTS			
ITEM	AC TYPE	VOIDS	RAP
DRIVEWAYS			
HOT-MIX ASPHALT SURFACE COURSE, MIX "C", N50, 2"(IL 9.5 mm)(P.E. & C.E.)	PG 64-22	4% @ 50 GYR.	15
HOT-MIX ASPHALT BASE COURSE, 6" (PRIVATE)	PG 64-22 /58-22	4% @ 50 GYR.	25
HOT-MIX ASPHALT BASE COURSE, 8" (COMMERCIAL)	PG 64-22 /58-22	4% @ 50 GYR.	25
PORTLAND CEMENT CONCRETE DRIVEWAY PAVEMENT, 6" (PRIVATE)	NA	NA	NA
BIKE PATH			
HOT-MIX ASPHALT SURFACE COURSE, MIX "C", N50, 3" (IL 9.5 mm)	PG 64-22	4% @ 50 GYR.	15

REVISIONS		ILLINOIS DEPARTMENT OF TRANSPORTATION
NAME	DATE	
		MAINTENANCE OF TRAFFIC - TYPICAL SECTION INDIAN TRAIL ROAD SHEET 3 OF 22



SCALE: VERT. / HORIZ. N/A
 DATE 1/7/09
 DRAWN BY TC
 CHECKED BY TC/SBP

PLOT DATE = 1/15/2009
 FILE NAME = H:\Aurora\120809\11PHIL\11\11\Sh1\W01_1.dwg
 PLOT SCALE = N/A
 USER NAME = JUSER