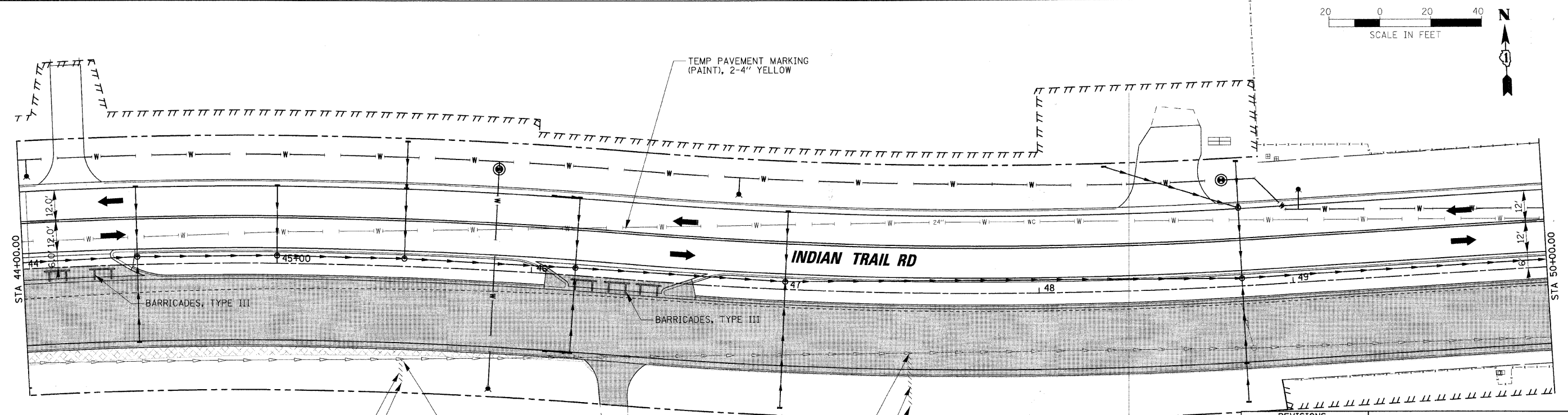
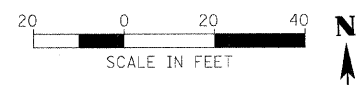
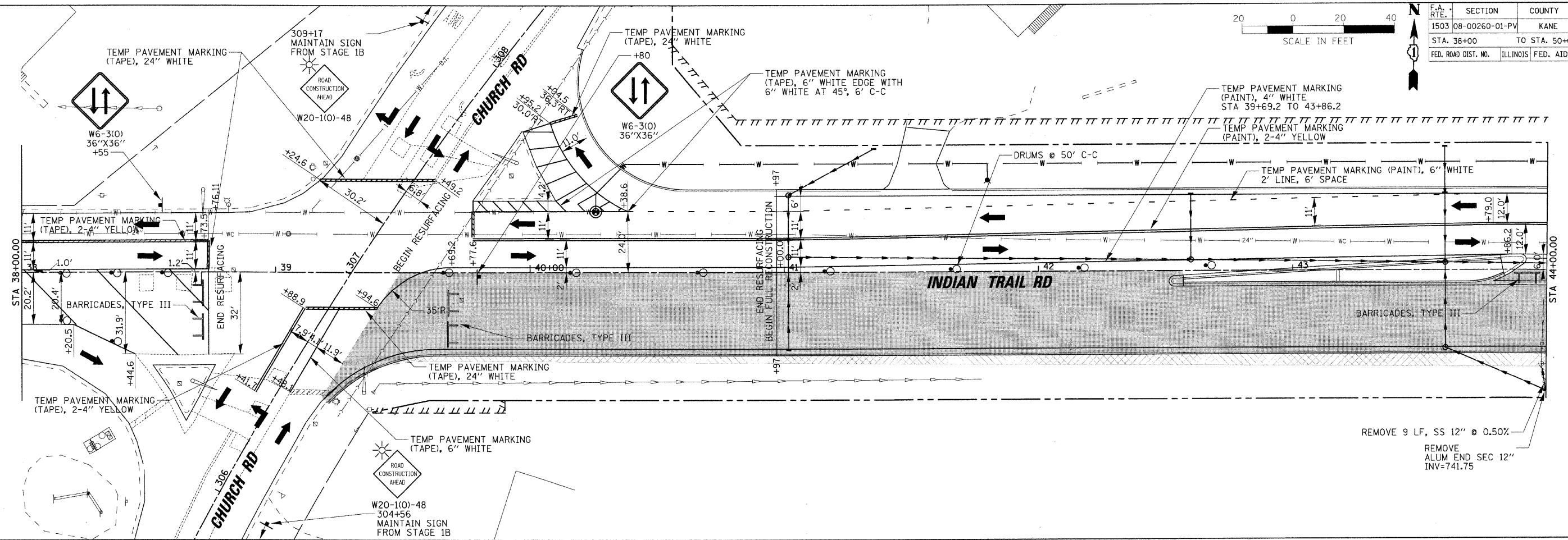
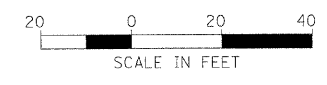


F.A. RTE.	SECTION	COUNTY	TOTAL SHEETS	SHEET NO.
1503	08-00260-01-PV	KANE	176	57
STA. 38+00		TO STA. 50+00		
FED. ROAD DIST. NO.		ILLINOIS FED. AID PROJECT		



- REMOVE 7 LF, SS 12" @ 0.50%
- REMOVE ALUM END SEC 12" INV=741.25
- REMOVE MAN TA 5 DIA T1F CL RIM=744.67 INV=738.16
- REMOVE MAN TA 5 DIA T1F CL RIM=744.76 INV=737.12
- REMOVE 19 LF, SS 12" @ 0.50%
- REMOVE ALUM END SEC 12" INV=741.00

REVISIONS	
NAME	DATE

ILLINOIS DEPARTMENT OF TRANSPORTATION

MAINTENANCE OF TRAFFIC - STAGE 2
INDIAN TRAIL ROAD
SHEET 17 OF 22

SCALE: VERT. 1"=20'
HORIZ. 1"=20'

DATE 1/7/09

DRAWN BY AWH
CHECKED BY TC/SBP

RHAA

Robert H. Anderson & Associates, Inc.
Consulting Engineers & Land Surveyors
License No. 044-005281
Phone No. 630-584-3530

PLOT DATE = 1/5/2009
 FILE NAME = H:\Aurora\120895.LTP\17\17.dwg
 PLOT SCALE = 1"=20'
 USER NAME = JUSST