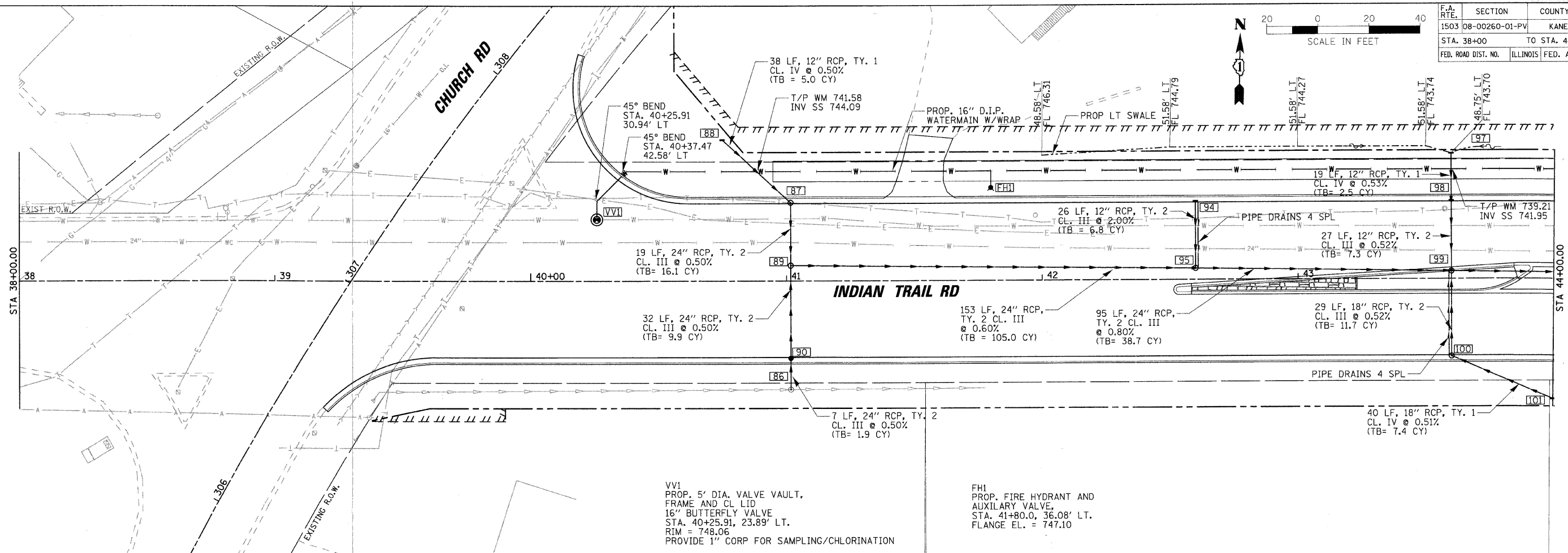
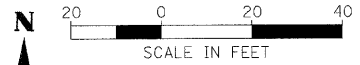


F.A. RTE.	SECTION	COUNTY	TOTAL SHEETS	SHEET NO.
1503	08-00260-01-PV	KANE	176	63
STA. 38+00		TO STA. 44+00		
FED. ROAD DIST. NO.		ILLINOIS FED. AID PROJECT		



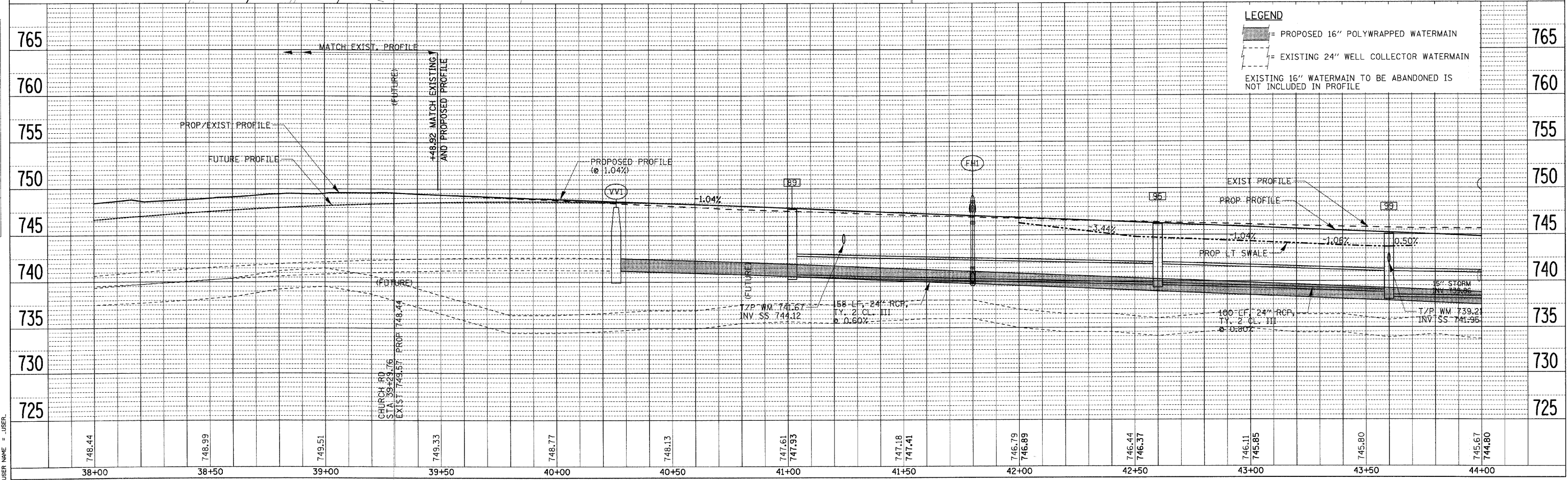
VVI  
PROP. 5' DIA. VALVE VAULT,  
FRAME AND CL LID  
16" BUTTERFLY VALVE  
STA. 40+25.91, 23.89' LT.  
RIM = 748.06  
PROVIDE 1" CORP FOR SAMPLING/CHLORINATION

FHI  
PROP. FIRE HYDRANT AND  
AUXILIARY VALVE  
STA. 41+80.0, 36.08' LT.  
FLANGE EL. = 747.10

PLAN	DATE
DATE	BY
DATE	BY
DATE	BY
DATE	BY

PROFILE	DATE
DATE	BY
DATE	BY
DATE	BY
DATE	BY

PLOT DATE = 1/5/2009  
FILE NAME = H:\AutoCAD\2009\11\PH\INDIAN TRAIL\INDIAN TRAIL.dwg  
PLOT SCALE = 1"=20'  
USER NAME = JUSEL



**LEGEND**

= PROPOSED 16" POLYWRAPPED WATERMAIN

= EXISTING 24" WELL COLLECTOR WATERMAIN

EXISTING 16" WATERMAIN TO BE ABANDONED IS NOT INCLUDED IN PROFILE