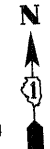
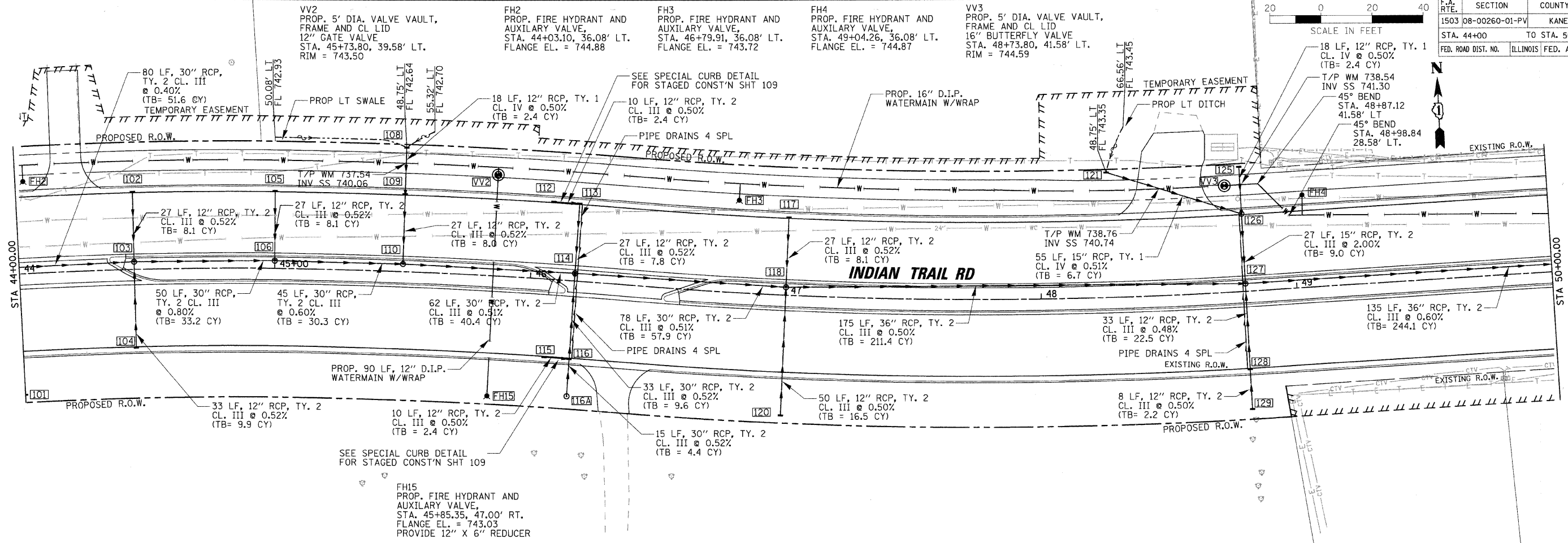


F.A. RTE.	SECTION	COUNTY	TOTAL SHEETS	SHEET NO.
1503	08-00260-01-PV	KANE	176	64
STA. 44+00		TO STA. 50+00		
FED. ROAD DIST. NO.		ILLINOIS FED. AID PROJECT		



DATE	BY

PLAN	DATE	BY



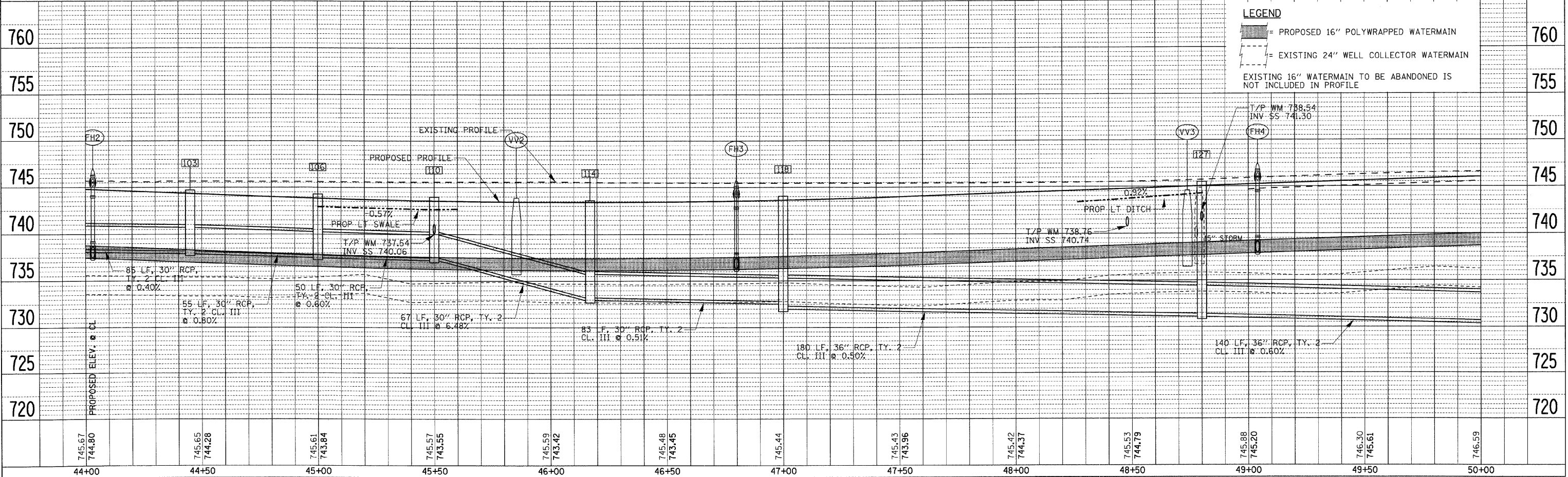
DATE	BY

PROFILE	DATE	BY

LEGEND

- [Solid line with hatching] = PROPOSED 16" POLYWRAPPED WATERMAIN
- [Dashed line with hatching] = EXISTING 24" WELL COLLECTOR WATERMAIN

EXISTING 16" WATERMAIN TO BE ABANDONED IS NOT INCLUDED IN PROFILE



PLOT DATE = 1/5/2009
 FILE NAME = H:\Aurora\20095\TPH1\CV1\SH\DRN.IT.B.dgn
 PLOT SCALE = 1"=20'
 USER NAME = JISEL