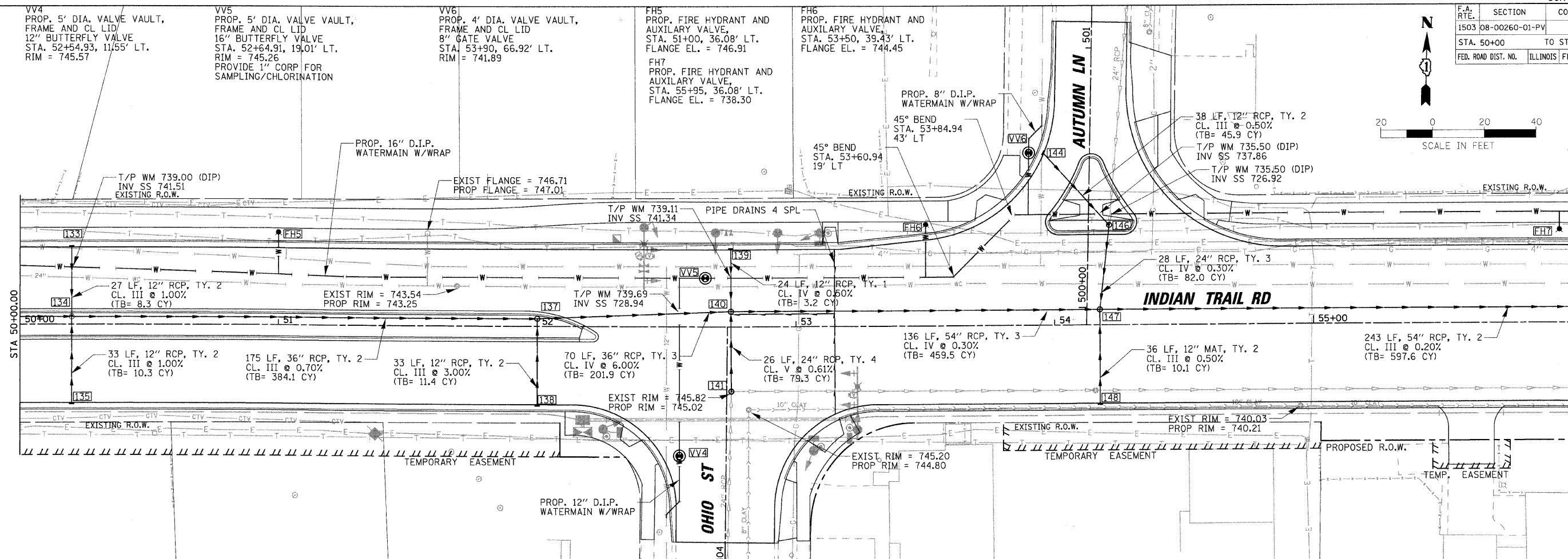
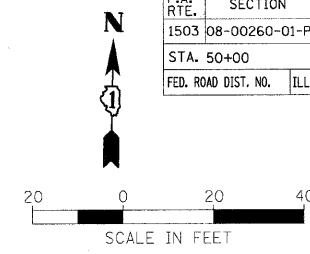


F.A. RTE.	SECTION	COUNTY	TOTAL SHEETS	SHEET NO.
1503	08-00260-01-PV	KANE	176	65
STA. 50+00		TO STA. 56+00		
FED. ROAD DIST. NO.		ILLINOIS FED. AID PROJECT		



VV4
PROP. 5' DIA. VALVE VAULT,
FRAME AND CL LID
12" BUTTERFLY VALVE
STA. 52+54.93, 11/55' LT.
RIM = 745.57

VV5
PROP. 5' DIA. VALVE VAULT,
FRAME AND CL LID
16" BUTTERFLY VALVE
STA. 52+64.91, 19.01' LT.
RIM = 745.26
PROVIDE 1" CORP FOR
SAMPLING/CHLORINATION

VV6
PROP. 4' DIA. VALVE VAULT,
FRAME AND CL LID
8" GATE VALVE
STA. 53+90, 66.92' LT.
RIM = 741.89

FH5
PROP. FIRE HYDRANT AND
AUXILIARY VALVE
STA. 51+00, 36.08' LT.
FLANGE EL. = 746.91

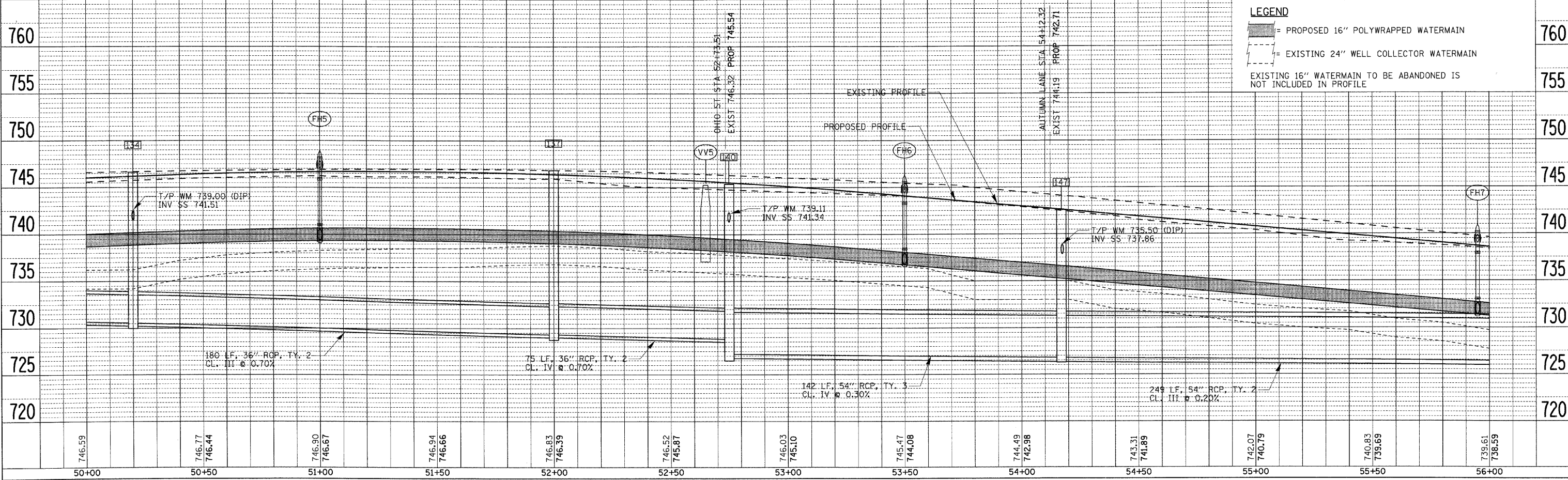
FH6
PROP. FIRE HYDRANT AND
AUXILIARY VALVE
STA. 53+50, 39.43' LT.
FLANGE EL. = 744.45

FH7
PROP. FIRE HYDRANT AND
AUXILIARY VALVE
STA. 55+95, 36.08' LT.
FLANGE EL. = 738.30

DATE	BY

DATE	BY

PLOT DATE = 1/5/2009
FILE NAME = H:\Aurora\28895\ITPH1\Cvt1\SHA\DRN.IT_9.dgn
PLOT SCALE = 1"=20'
USER NAME = JOSEEL



LEGEND
 = PROPOSED 16" POLYWRAPPED WATERMAIN
 = EXISTING 24" WELL COLLECTOR WATERMAIN
 EXISTING 16" WATERMAIN TO BE ABANDONED IS NOT INCLUDED IN PROFILE

746.59	746.77	746.90	746.94	746.83	746.52	746.03	745.47	744.49	743.31	742.07	740.83	739.61
50+00	50+50	51+00	51+50	52+00	52+50	53+00	53+50	54+00	54+50	55+00	55+50	56+00