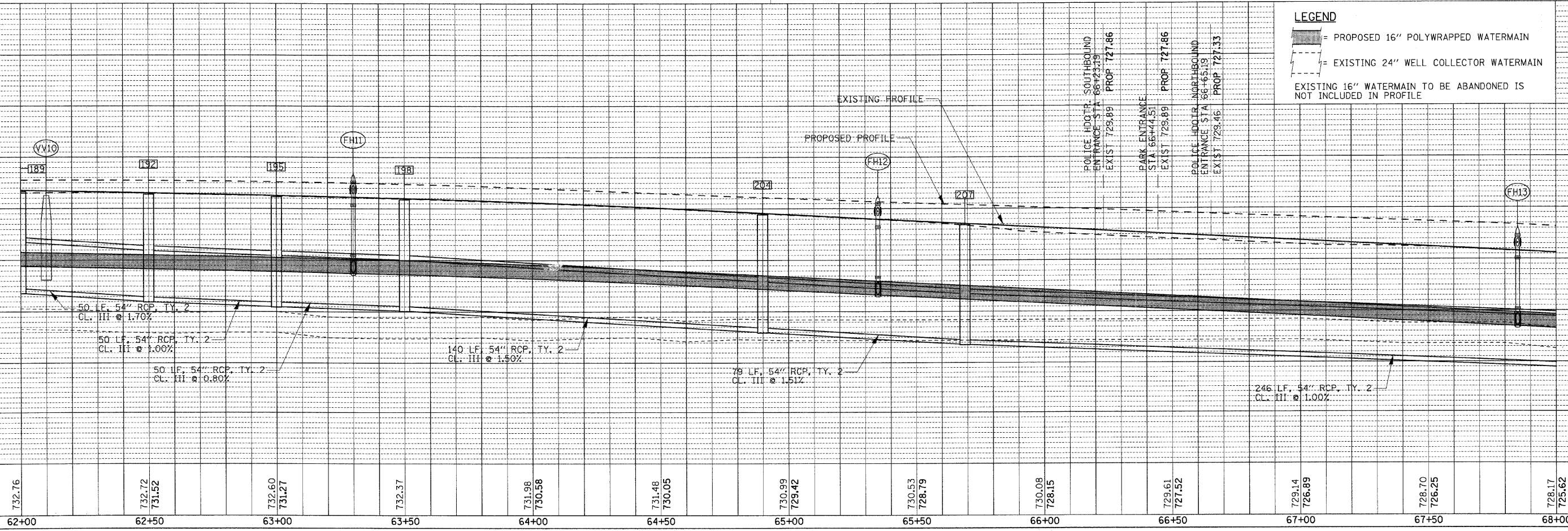
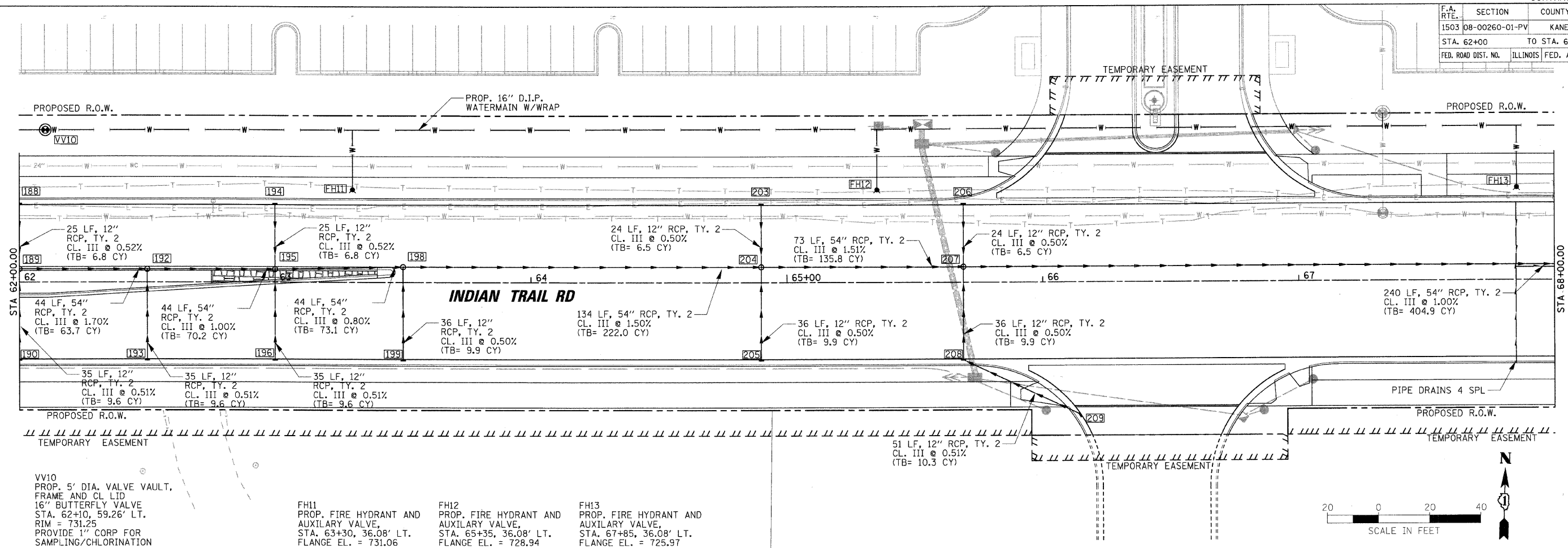
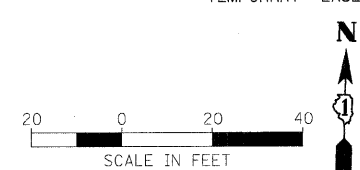


F.A. RTE.	SECTION	COUNTY	TOTAL SHEETS	SHEET NO.
1503	08-00260-01-PV	KANE	176	67
STA. 62+00		TO STA. 68+00		
FED. ROAD DIST. NO.	ILLINOIS	FED. AID PROJECT		



**LEGEND**

- PROPOSED 16" POLYWRAPPED WATERMAIN
- EXISTING 24" WELL COLLECTOR WATERMAIN
- EXISTING 16" WATERMAIN TO BE ABANDONED IS NOT INCLUDED IN PROFILE



VV10  
PROP. 5' DIA. VALVE VAULT,  
FRAME AND CL LID  
16" BUTTERFLY VALVE  
STA. 62+10, 59.26' LT.  
RIM = 731.25  
PROVIDE 1" CORP FOR  
SAMPLING/CHLORINATION

FH11  
PROP. FIRE HYDRANT AND  
AUXILIARY VALVE,  
STA. 63+30, 36.08' LT.  
FLANGE EL. = 731.06

FH12  
PROP. FIRE HYDRANT AND  
AUXILIARY VALVE,  
STA. 65+35, 36.08' LT.  
FLANGE EL. = 728.94

FH13  
PROP. FIRE HYDRANT AND  
AUXILIARY VALVE,  
STA. 67+85, 36.08' LT.  
FLANGE EL. = 725.97

DATE	BY

DATE	BY

PLOT DATE = 1/5/2009  
FILE NAME = H:\Aurora\120095.LTP\INDIAN TRAIL.DGN  
PLOT SCALE = 1"=20'  
USER NAME = JUSER