

F.A. RTE.	SECTION	COUNTY	TOTAL SHEETS	SHEET NO.
1503	08-00260-01-PV	KANE	176	68
STA. 68+00		TO STA. 74+00		
FED. ROAD DIST. NO.		ILLINOIS FED. AID PROJECT		

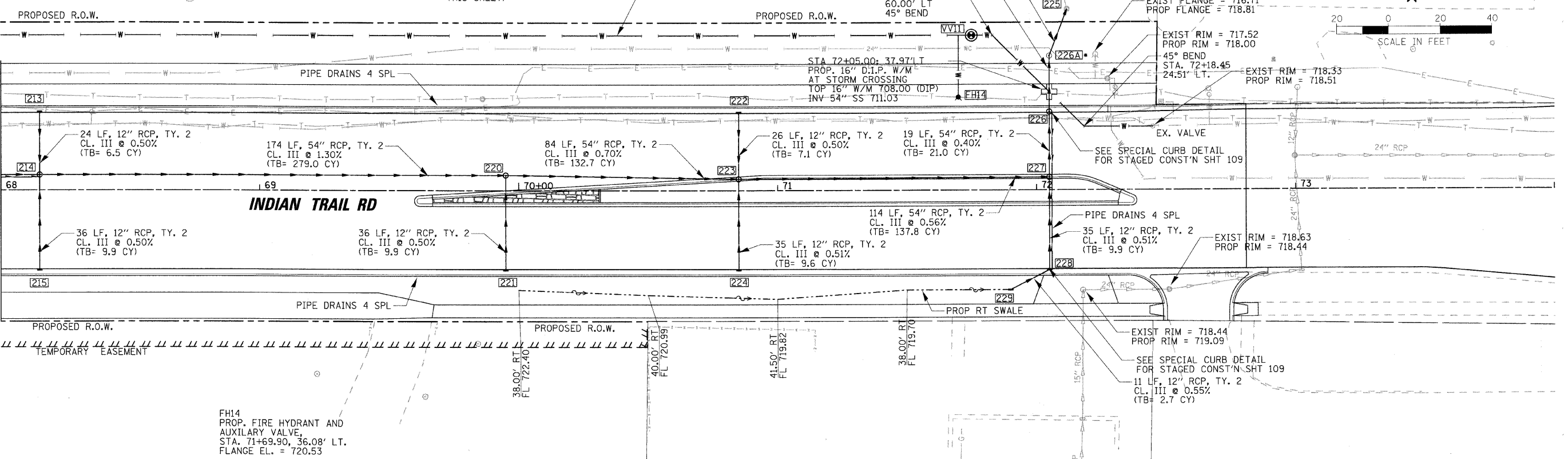
VV11 NOTE: CONTRACTOR TO VERIFY LOCATION OF THIS VALVE WITH CITY OF AURORA WATER & SEWER DIVISION PRIOR TO INSTALLATION.

VV11 PROP. 5' DIA. VALVE VAULT, FRAME AND CL LID 16" BUTTERFLY VALVE STA. 71+74.97, 60' LT. RIM = 718.28 PROVIDE 1" CORP FOR SAMPLING/CHLORINATION (SEE NOTE THIS SHEET)

PROP. 16" D.I.P. WATERMAIN W/WRAP

- STORM SEWER TO BE CONSTRUCTED BY OTHERS
13 LF, 54" RCP, TY. 2
CL. III @ 7.90%
16 LF, 54" RCP, TY. 2
CL. III @ 0.23%
(TB= 15.1 CY)
STA. 71+82.97
60.00' LT
45° BEND

* FIELD ADJUST SO THAT STRUCTURE IS NOT ON TOP OF WATERMAIN



FH14
PROP. FIRE HYDRANT AND AUXILIARY VALVE, STA. 71+69.90, 36.08' LT. FLANGE EL. = 720.53

DATE	BY

PLAN

DATE	BY

DATE	BY

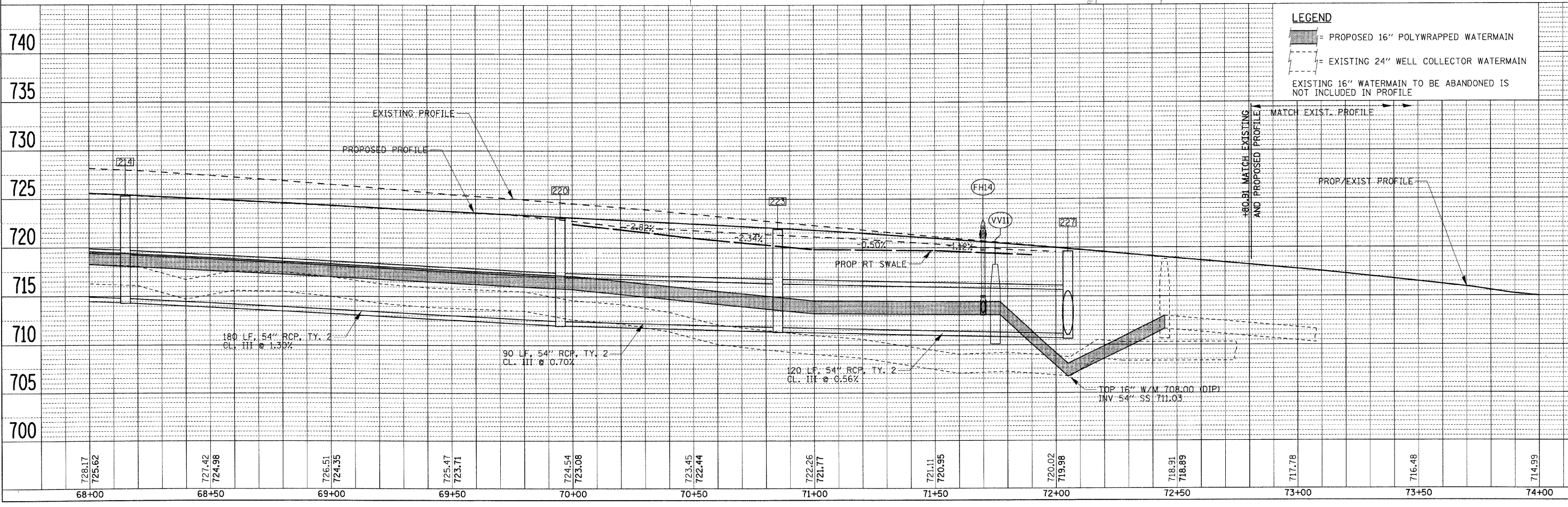
PROFILE

DATE	BY

PLOT DATE = 1/6/2009
FILE NAME = H:\Aurora\1526059\1TP\A1\Civil\Sheet\ORA.IT_12.dgn
PLOT SCALE = 1" = 20'
USER NAME = JGSL

LEGEND

- = PROPOSED 16" POLYWRAPPED WATERMAIN
- = EXISTING 24" WELL COLLECTOR WATERMAIN
- EXISTING 16" WATERMAIN TO BE ABANDONED IS NOT INCLUDED IN PROFILE



STATION	ELEVATION (FEET)
68+00	728.17
68+50	727.42
69+00	726.51
69+50	725.47
70+00	724.54
70+50	723.45
71+00	722.26
71+50	721.11
72+00	720.02
72+50	718.91
73+00	717.78
73+50	716.48
74+00	714.99