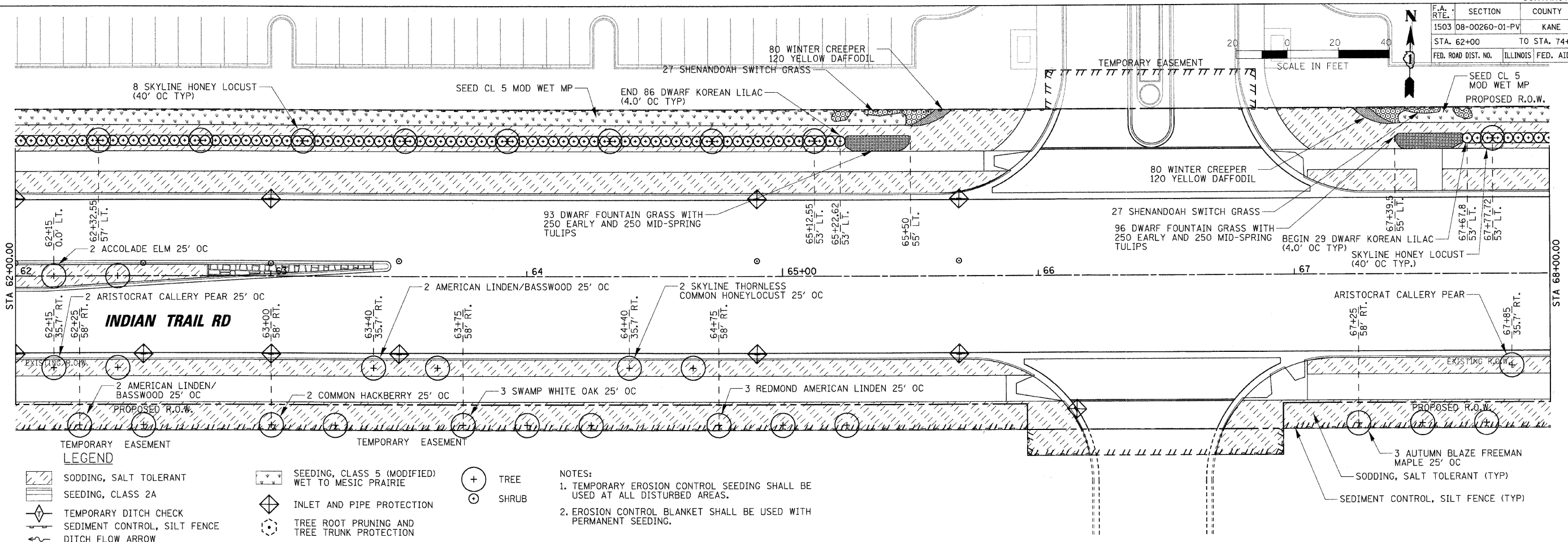
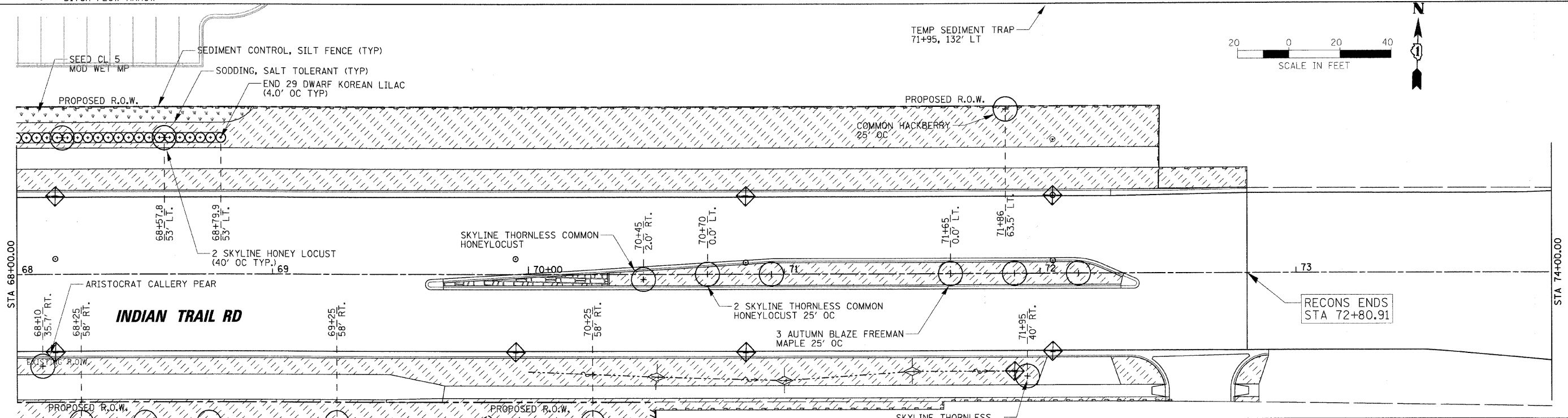
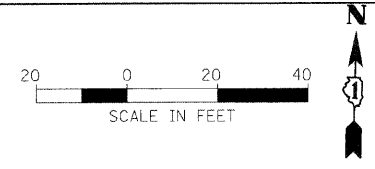


F.A. RTE.	SECTION	COUNTY	TOTAL SHEETS	SHEET NO.
1503	08-00260-01-PV	KANE	176	83
STA. 62+00		TO STA. 74+00		
FED. ROAD DIST. NO.	ILLINOIS	FED. AID PROJECT		



- LEGEND**
- SODDING, SALT TOLERANT
 - SEEDING, CLASS 2A
 - TEMPORARY DITCH CHECK
 - SEDIMENT CONTROL, SILT FENCE
 - DITCH FLOW ARROW
 - SEEDING, CLASS 5 (MODIFIED) WET TO MESC PRAIRIE
 - INLET AND PIPE PROTECTION
 - TREE
 - SHRUB
 - TREE ROOT PRUNING AND TREE TRUNK PROTECTION

- NOTES:**
- TEMPORARY EROSION CONTROL SEEDING SHALL BE USED AT ALL DISTURBED AREAS.
 - EROSION CONTROL BLANKET SHALL BE USED WITH PERMANENT SEEDING.



- SODDING, SALT TOLERANT (TYP)
- SEEDING, CLASS 5 (MODIFIED) WET TO MESC PRAIRIE
- INLET AND PIPE PROTECTION
- TREE
- SHRUB
- TREE ROOT PRUNING AND TREE TRUNK PROTECTION

REVISIONS	
NAME	DATE

ILLINOIS DEPARTMENT OF TRANSPORTATION
 LANDSCAPING AND EROSION CONTROL
 INDIAN TRAIL ROAD
 SHEET 4 OF 5



SCALE: VERT. 1" = 20'
 HORIZ. 1" = 20'
 DATE: 1/7/09
 DRAWN BY: TC
 CHECKED BY: TC/SBP

PLOT DATE = 1/5/2009
 FILE NAME = H:\Users\j120059\ITP\INDIAN TRAIL\LANDSCAPING.IT 6.dgn
 PLOT SCALE = 1" = 20'
 USER NAME = USER