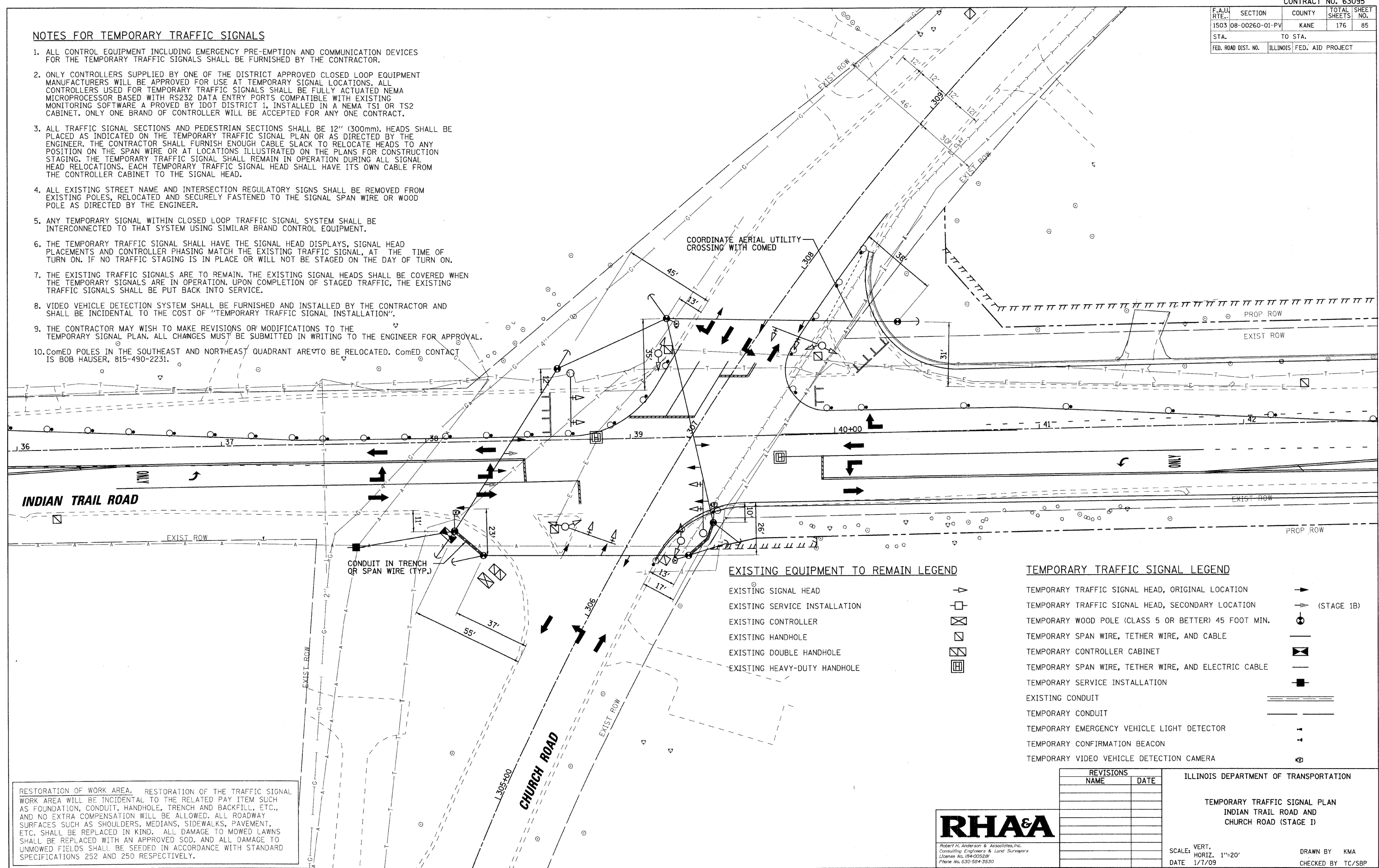


F.A.U. RTE.	SECTION	COUNTY	TOTAL SHEETS	SHEET NO.
1503	08-00260-01-PV	KANE	176	85
STA.		TO STA.		
FED. ROAD DIST. NO.		ILLINOIS FED. AID PROJECT		

**NOTES FOR TEMPORARY TRAFFIC SIGNALS**

1. ALL CONTROL EQUIPMENT INCLUDING EMERGENCY PRE-EMPTION AND COMMUNICATION DEVICES FOR THE TEMPORARY TRAFFIC SIGNALS SHALL BE FURNISHED BY THE CONTRACTOR.
2. ONLY CONTROLLERS SUPPLIED BY ONE OF THE DISTRICT APPROVED CLOSED LOOP EQUIPMENT MANUFACTURERS WILL BE APPROVED FOR USE AT TEMPORARY SIGNAL LOCATIONS. ALL CONTROLLERS USED FOR TEMPORARY TRAFFIC SIGNALS SHALL BE FULLY ACTUATED NEMA MICROPROCESSOR BASED WITH RS232 DATA ENTRY PORTS COMPATIBLE WITH EXISTING MONITORING SOFTWARE A PROVED BY IDOT DISTRICT 1, INSTALLED IN A NEMA TS1 OR TS2 CABINET. ONLY ONE BRAND OF CONTROLLER WILL BE ACCEPTED FOR ANY ONE CONTRACT.
3. ALL TRAFFIC SIGNAL SECTIONS AND PEDESTRIAN SECTIONS SHALL BE 12" (300mm). HEADS SHALL BE PLACED AS INDICATED ON THE TEMPORARY TRAFFIC SIGNAL PLAN OR AS DIRECTED BY THE ENGINEER. THE CONTRACTOR SHALL FURNISH ENOUGH CABLE SLACK TO RELOCATE HEADS TO ANY POSITION ON THE SPAN WIRE OR AT LOCATIONS ILLUSTRATED ON THE PLANS FOR CONSTRUCTION STAGING. THE TEMPORARY TRAFFIC SIGNAL SHALL REMAIN IN OPERATION DURING ALL SIGNAL HEAD RELOCATIONS. EACH TEMPORARY TRAFFIC SIGNAL HEAD SHALL HAVE ITS OWN CABLE FROM THE CONTROLLER CABINET TO THE SIGNAL HEAD.
4. ALL EXISTING STREET NAME AND INTERSECTION REGULATORY SIGNS SHALL BE REMOVED FROM EXISTING POLES, RELOCATED AND SECURELY FASTENED TO THE SIGNAL SPAN WIRE OR WOOD POLE AS DIRECTED BY THE ENGINEER.
5. ANY TEMPORARY SIGNAL WITHIN CLOSED LOOP TRAFFIC SIGNAL SYSTEM SHALL BE INTERCONNECTED TO THAT SYSTEM USING SIMILAR BRAND CONTROL EQUIPMENT.
6. THE TEMPORARY TRAFFIC SIGNAL SHALL HAVE THE SIGNAL HEAD DISPLAYS, SIGNAL HEAD PLACEMENTS AND CONTROLLER PHASING MATCH THE EXISTING TRAFFIC SIGNAL, AT THE TIME OF TURN ON. IF NO TRAFFIC STAGING IS IN PLACE OR WILL NOT BE STAGED ON THE DAY OF TURN ON.
7. THE EXISTING TRAFFIC SIGNALS ARE TO REMAIN. THE EXISTING SIGNAL HEADS SHALL BE COVERED WHEN THE TEMPORARY SIGNALS ARE IN OPERATION. UPON COMPLETION OF STAGED TRAFFIC, THE EXISTING TRAFFIC SIGNALS SHALL BE PUT BACK INTO SERVICE.
8. VIDEO VEHICLE DETECTION SYSTEM SHALL BE FURNISHED AND INSTALLED BY THE CONTRACTOR AND SHALL BE INCIDENTAL TO THE COST OF "TEMPORARY TRAFFIC SIGNAL INSTALLATION".
9. THE CONTRACTOR MAY WISH TO MAKE REVISIONS OR MODIFICATIONS TO THE TEMPORARY SIGNAL PLAN. ALL CHANGES MUST BE SUBMITTED IN WRITING TO THE ENGINEER FOR APPROVAL.
10. ComED POLES IN THE SOUTHEAST AND NORTHEAST QUADRANT ARE TO BE RELOCATED. ComED CONTACT IS BOB HAUSER, 815-490-2231.



**EXISTING EQUIPMENT TO REMAIN LEGEND**

- EXISTING SIGNAL HEAD
- EXISTING SERVICE INSTALLATION
- EXISTING CONTROLLER
- EXISTING HANDHOLE
- EXISTING DOUBLE HANDHOLE
- EXISTING HEAVY-DUTY HANDHOLE

**TEMPORARY TRAFFIC SIGNAL LEGEND**

- TEMPORARY TRAFFIC SIGNAL HEAD, ORIGINAL LOCATION
- TEMPORARY TRAFFIC SIGNAL HEAD, SECONDARY LOCATION (STAGE 1B)
- TEMPORARY WOOD POLE (CLASS 5 OR BETTER) 45 FOOT MIN.
- TEMPORARY SPAN WIRE, TETHER WIRE, AND CABLE
- TEMPORARY CONTROLLER CABINET
- TEMPORARY SPAN WIRE, TETHER WIRE, AND ELECTRIC CABLE
- TEMPORARY SERVICE INSTALLATION
- EXISTING CONDUIT
- TEMPORARY CONDUIT
- TEMPORARY EMERGENCY VEHICLE LIGHT DETECTOR
- TEMPORARY CONFIRMATION BEACON
- TEMPORARY VIDEO VEHICLE DETECTION CAMERA

RESTORATION OF WORK AREA. RESTORATION OF THE TRAFFIC SIGNAL WORK AREA WILL BE INCIDENTAL TO THE RELATED PAY ITEM SUCH AS FOUNDATION, CONDUIT, HANDHOLE, TRENCH AND BACKFILL, ETC., AND NO EXTRA COMPENSATION WILL BE ALLOWED. ALL ROADWAY SURFACES SUCH AS SHOULDERS, MEDIANS, SIDEWALKS, PAVEMENT, ETC. SHALL BE REPLACED IN KIND. ALL DAMAGE TO MOWED LAWNS SHALL BE REPLACED WITH AN APPROVED SOD. AND ALL DAMAGE TO UNMOWED FIELDS SHALL BE SEEDED IN ACCORDANCE WITH STANDARD SPECIFICATIONS 252 AND 250 RESPECTIVELY.

REVISIONS	
NAME	DATE

ILLINOIS DEPARTMENT OF TRANSPORTATION

TEMPORARY TRAFFIC SIGNAL PLAN  
INDIAN TRAIL ROAD AND  
CHURCH ROAD (STAGE I)

SCALE: VERT. 1"=20'  
HORIZ. 1"=20'

DATE 1/7/09

DRAWN BY KMA  
CHECKED BY TC/SBP

**RHA&A**

Robert H. Anderson & Associates, Inc.  
Consulting Engineers & Land Surveyors  
License No. 094-005529  
Phone No. 630-584-3530

PLOT DATE = 1/5/2009  
 FILE NAME = H:\Users\m\120805\ITPH\ITC\vt1\SHA\SIGNAL.CHU.dgn  
 PLOT SCALE = 1"=20'  
 USER NAME = USER