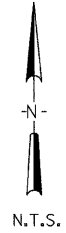


F.A.U. RTE.	SECTION	COUNTY	TOTAL SHEETS	SHEET NO.
1503	08-00260-01-PV	KANE	176	95
STA.		TO STA.		
FED. ROAD DIST. NO.	ILLINOIS	FED. AID PROJECT		

INTERCONNECT SCHEMATIC LEGEND

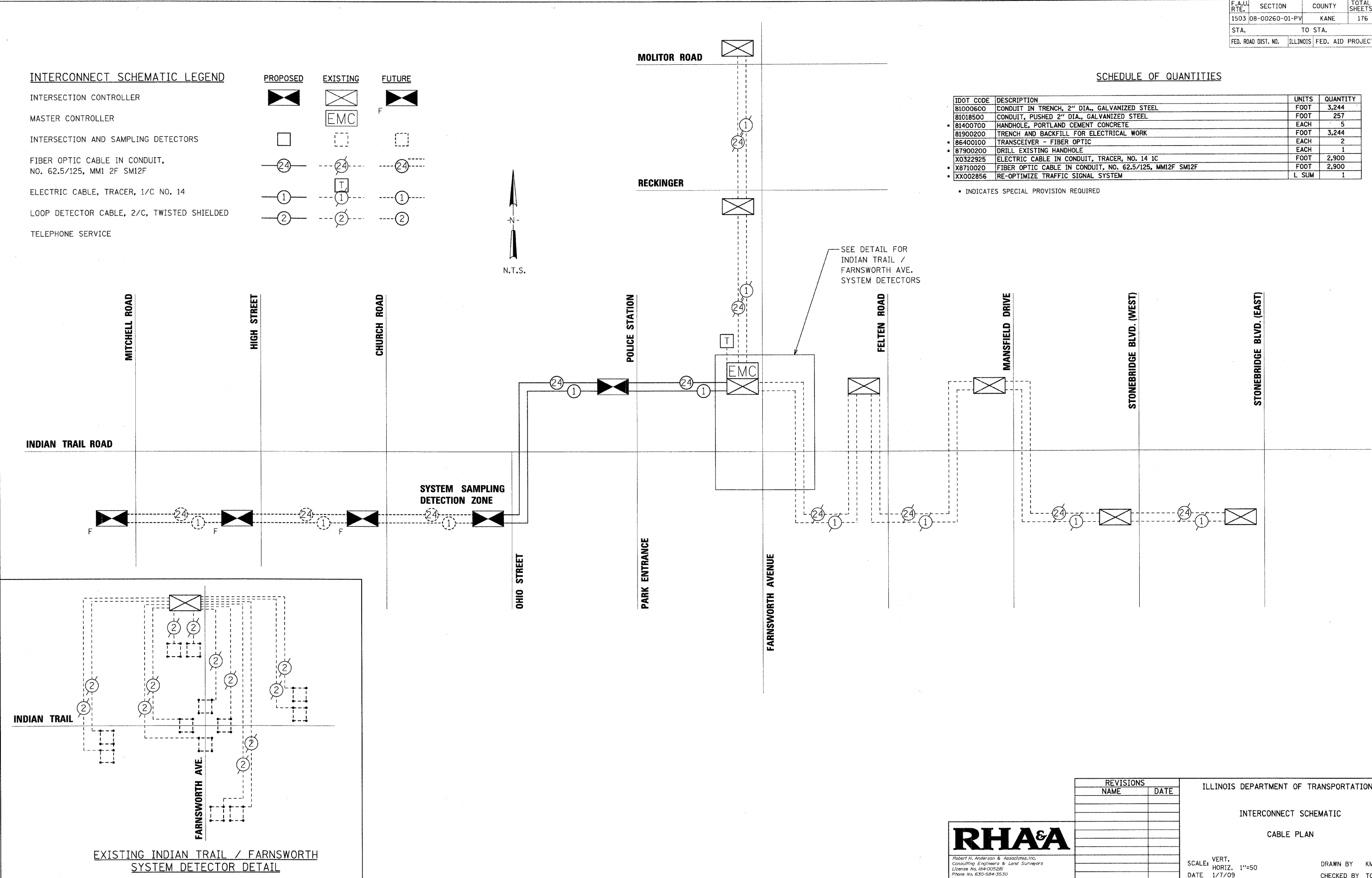
	PROPOSED	EXISTING	FUTURE
INTERSECTION CONTROLLER			
MASTER CONTROLLER			
INTERSECTION AND SAMPLING DETECTORS			
FIBER OPTIC CABLE IN CONDUIT, NO. 62.5/125, MM1 2F SM12F			
ELECTRIC CABLE, TRACER, 1/C NO. 14			
LOOP DETECTOR CABLE, 2/C, TWISTED SHIELDED			
TELEPHONE SERVICE			



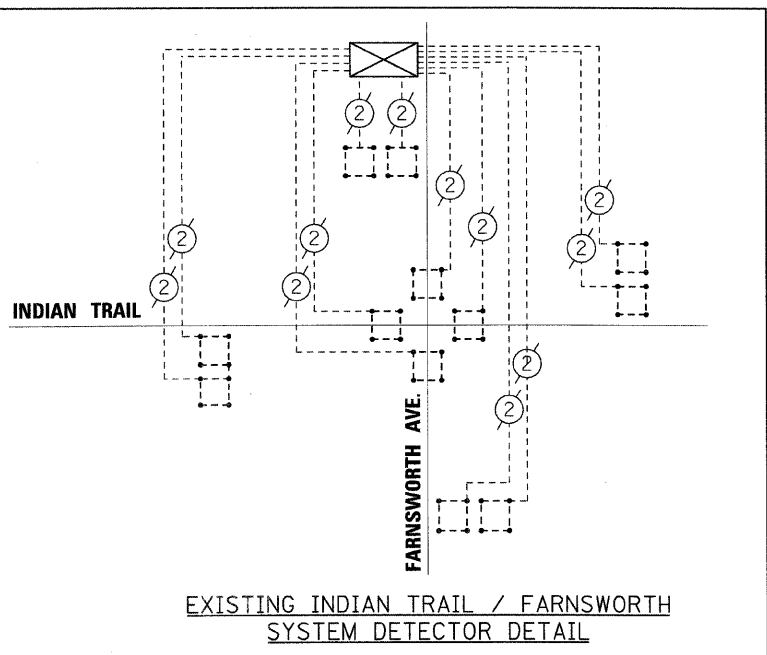
SCHEDULE OF QUANTITIES

IDOT CODE	DESCRIPTION	UNITS	QUANTITY
81000600	CONDUIT IN TRENCH, 2" DIA., GALVANIZED STEEL	FOOT	3,244
81018500	CONDUIT, PUSHED 2" DIA., GALVANIZED STEEL	FOOT	257
81400700	HANDHOLE, PORTLAND CEMENT CONCRETE	EACH	5
81900200	TRENCH AND BACKFILL FOR ELECTRICAL WORK	FOOT	3,244
86400100	TRANSCEIVER - FIBER OPTIC	EACH	2
87900200	DRILL EXISTING HANDHOLE	EACH	1
X0322925	ELECTRIC CABLE IN CONDUIT, TRACER, NO. 14 1C	FOOT	2,900
X8710020	FIBER OPTIC CABLE IN CONDUIT, NO. 62.5/125, MM12F SM12F	FOOT	2,900
XX002856	RE-OPTIMIZE TRAFFIC SIGNAL SYSTEM	L SUM	1

• INDICATES SPECIAL PROVISION REQUIRED



SEE DETAIL FOR INDIAN TRAIL / FARNSWORTH AVE. SYSTEM DETECTORS



REVISIONS	
NAME	DATE

ILLINOIS DEPARTMENT OF TRANSPORTATION
 INTERCONNECT SCHEMATIC
 CABLE PLAN
 SCALE: VERT. 1"=50
 HORIZ. 1"=50
 DATE 1/7/09
 DRAWN BY KMA
 CHECKED BY TC/SBP



PLOT DATE = 1/5/2009
 FILE NAME = H:\Auto-cad\2008\9_11\Prj\IN\Civil\Shk\Schematic_3.dgn
 PLOT SCALE = 1"=50
 USER NAME = USERL