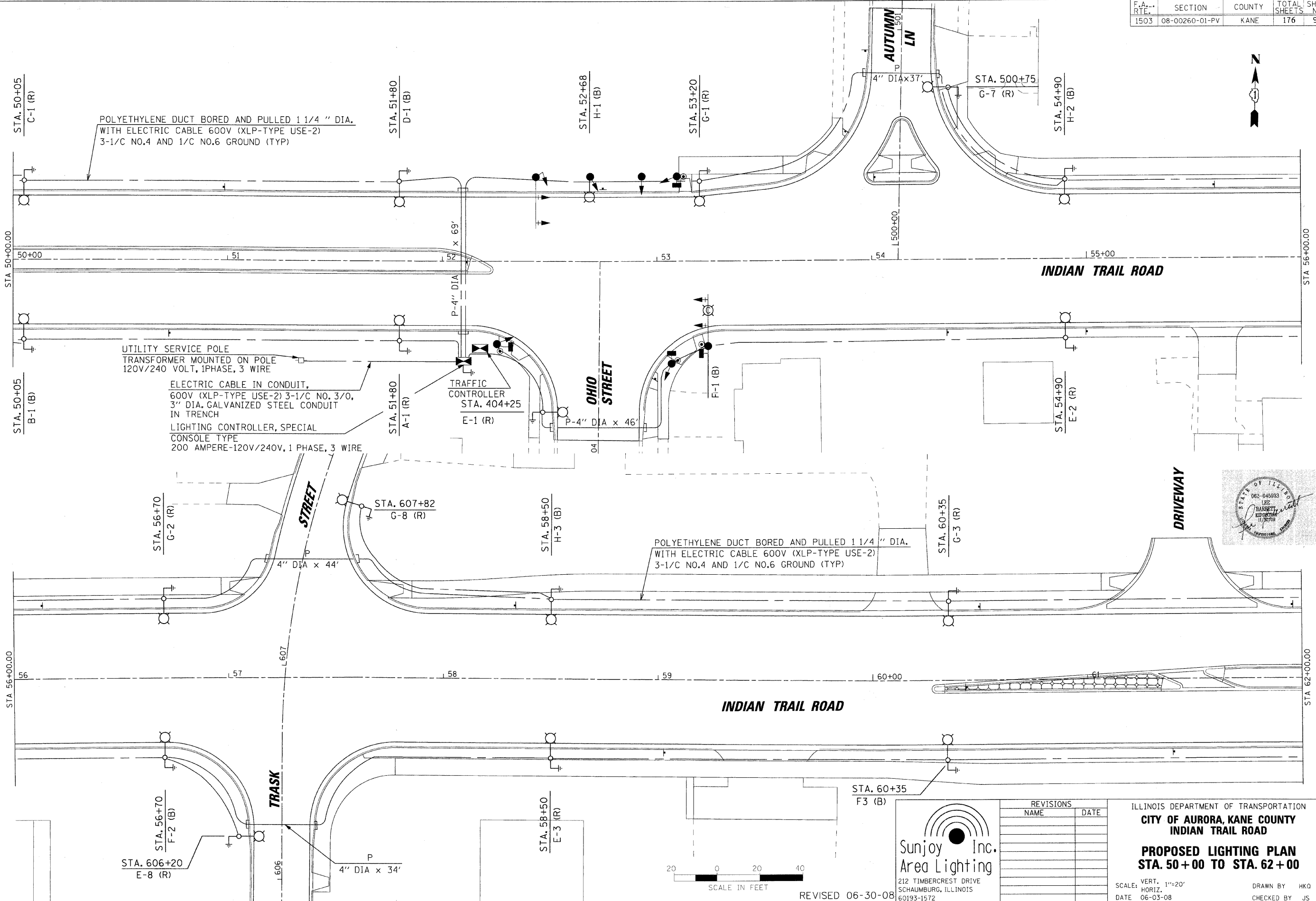


F.A. RTE.	SECTION	COUNTY	TOTAL SHEETS	SHEET NO.
1503	08-00260-01-PV	KANE	176	98



POLYETHYLENE DUCT BORED AND PULLED 1 1/4" DIA.
WITH ELECTRIC CABLE 600V (XLP-TYPE USE-2)
3-1/C NO.4 AND 1/C NO.6 GROUND (TYP)

UTILITY SERVICE POLE
TRANSFORMER MOUNTED ON POLE
120V/240 VOLT, 1PHASE, 3 WIRE

ELECTRIC CABLE IN CONDUIT,
600V (XLP-TYPE USE-2) 3-1/C NO. 3/0,
3" DIA. GALVANIZED STEEL CONDUIT
IN TRENCH

LIGHTING CONTROLLER, SPECIAL
CONSOLE TYPE
200 AMPERE-120V/240V, 1 PHASE, 3 WIRE

TRAFFIC CONTROLLER
STA. 404+25
E-1 (R)

POLYETHYLENE DUCT BORED AND PULLED 1 1/4" DIA.
WITH ELECTRIC CABLE 600V (XLP-TYPE USE-2)
3-1/C NO.4 AND 1/C NO.6 GROUND (TYP)



Sunjoy Inc.
Area Lighting
212 TIMBERCREST DRIVE
SCHAUMBURG, ILLINOIS
60193-1572

REVISIONS	
NAME	DATE

ILLINOIS DEPARTMENT OF TRANSPORTATION
CITY OF AURORA, KANE COUNTY
INDIAN TRAIL ROAD

PROPOSED LIGHTING PLAN
STA. 50+00 TO STA. 62+00

SCALE: VERT. 1"=20'
HORIZ. 1"=40'
DATE 06-03-08

DRAWN BY HKO
CHECKED BY JS

REVISED 06-30-08

SFILES

SDATES